

A large, multi-story brick office building with a light-colored stone base and numerous windows. A blue sign for "Capitol Federal" is visible on the corner. The building is surrounded by trees and a clear blue sky.

Office for Lease

730 New Hampshire Street  
Suites 203 & 208, Lawrence, Kansas



# 730 New Hampshire Street

## Building Highlights

- Stylish, 22,000-square-foot office building has unique character and industrial finishes
- Equipped with elevator access, a main floor mail center and key card security access
- Full-service lease rate excludes phone, Internet, cable, and janitorial
- 20 + 2 ADA dedicated parking to the building along with metered parking



\$25/SF  
Lease Rate

---

2006  
Year Built

---

CD-UC  
Zoning



# Floor Plan - Suites Available

## Suite 208 (entire) - 2,733 SF \$5,693.75/month, full service

- Three private offices
- Conference room
- Breakroom and storage
- Open work space
- Reception area
- Second-floor balcony

## Suite 208 (partial) - 1,733 SF \$3,610.41/month, full service

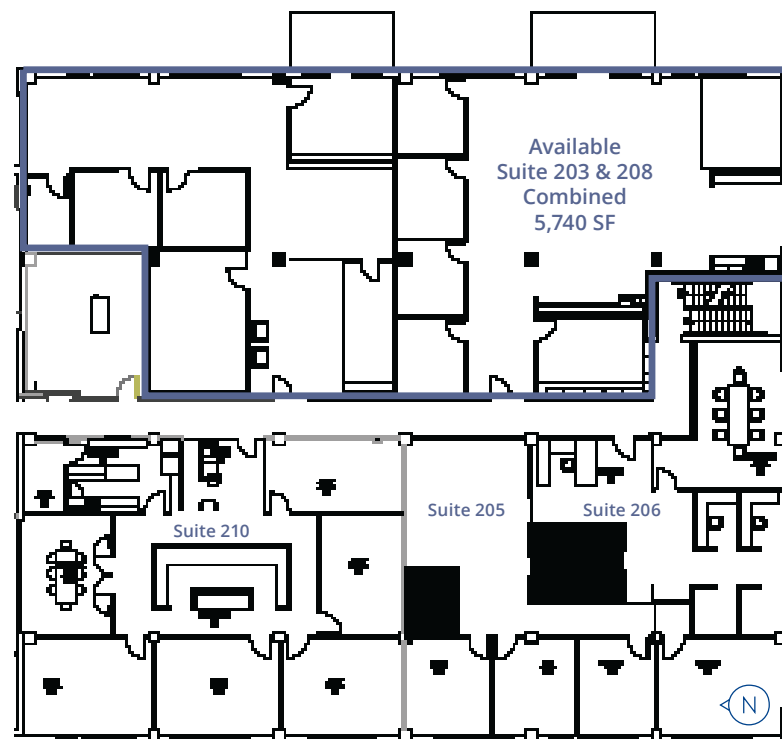
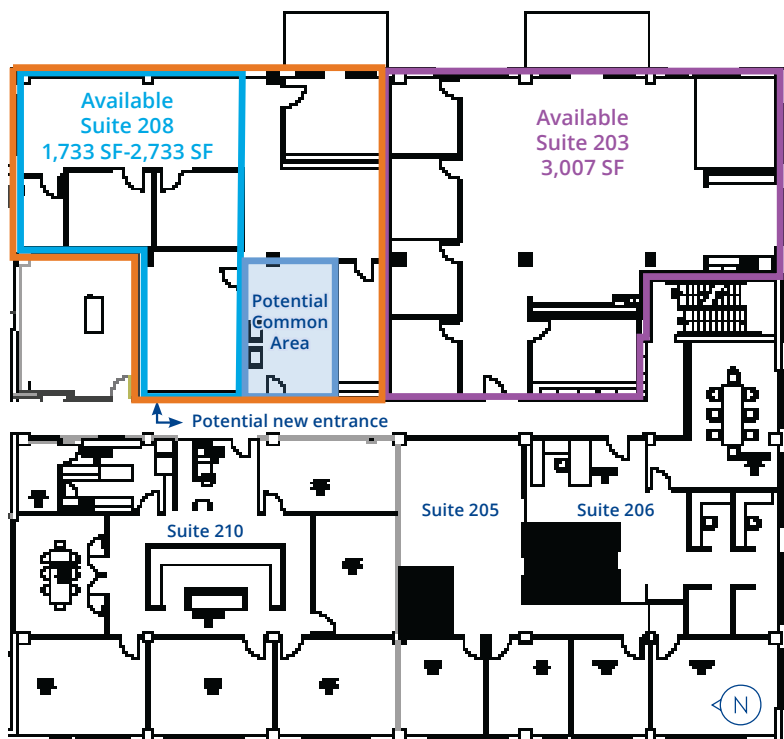
- Two private offices
- Conference room
- Open work space
- Small storage
- Reception area

## Suite 203 - 3,007 SF \$6,264.58/month, full service

- Four private offices
- Conference room
- Multiple break areas
- Open work space
- Second-floor balcony
- Storage

## Suite 203 & 208 Combined - 5,740 SF \$11,958.33/month, full service

- Eight to nine private offices
- One to two conference rooms
- Open work space and storage
- Multiple break areas
- Reception area
- Second-floor balcony & abundant windows







**For Lease** | 730 New Hampshire Street, Suites 203 & 208



**Allison Vance Moore, SIOR**  
Senior Vice President  
Direct +1 785 865 3924  
allison.moore@colliers.com

**Colliers Lawrence**  
Colliers Lawrence  
3705 Clinton Parkway, Suite 201  
Lawrence, Kansas 66047