

The Colliers logo consists of the word "Colliers" in a white serif font, centered within a blue rounded rectangle. Below the rectangle are three horizontal stripes in yellow, red, and blue.

For Lease

Office & Warehouse Building

± 2,740 SF Available

915 34th St., Bakersfield, CA 93301

Contact Us:

Oscar Baltazar

Senior Vice President | Principal
License No. 01263421
+1 661 631 3819
oscar.baltazar@colliers.com

Ryan Skidmore

Associate | Central Cal
License No. 02205007
+1 661 631 3828
ryan.skidmore@colliers.com

Colliers International

License No. 00452468
10000 Stockdale Hwy, Suite 102
Bakersfield, CA 93311
colliers.com/bakersfield

This document/email has been prepared by Colliers for advertising and general information only. Colliers makes no guarantees, representations or warranties of any kind, expressed or implied, regarding the information including, but not limited to, warranties of content, accuracy and reliability. Any interested party should undertake their own inquiries as to the accuracy of the information. Colliers excludes unequivocally all inferred or implied terms, conditions and warranties arising out of this document and excludes all liability for loss and damages arising there from. This publication is the copyrighted property of Colliers and /or its licensor(s). © 2025. All rights reserved. This communication is not intended to cause or induce breach of an existing listing agreement.

Accelerating success.

Property Overview

915 34th Street is conveniently situated in Central Bakersfield a block away from Mercy Hospital. It allows quick access to Hwy 99 and Hwy 58. This location also provides close proximity to Hwy 178 West and Eastbound.

Lease Rate:

\$2,500/mo. , Industrial Gross

Available:

± 2,740 SF (office and warehouse)

Highlights:

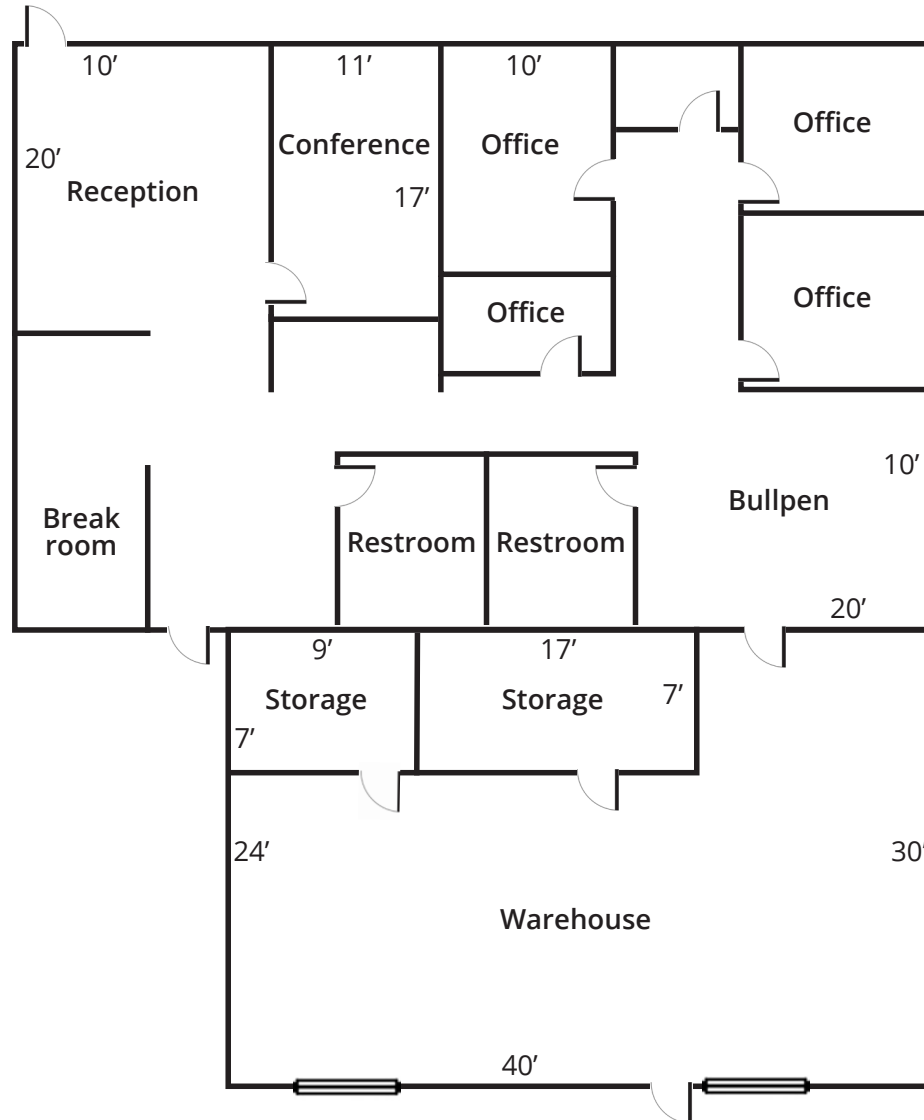
- Approximately ±1,700 SF office area
- Approximately ±1,040 SF warehouse
- Concrete block construction
- Fully paved and fully fenced yard area
- Centrally located
- Convenient Hwy access
- M-1 (Light Industrial) Bakersfield City Zoning
- APN 002-031-11

This document/email has been prepared by Colliers for advertising and general information only. Colliers makes no guarantees, representations or warranties of any kind, expressed or implied, regarding the information including, but not limited to, warranties of content, accuracy and reliability. Any interested party should undertake their own inquiries as to the accuracy of the information. Colliers excludes unequivocally all inferred or implied terms, conditions and warranties arising out of this document and excludes all liability for loss and damages arising there from. This publication is the copyrighted property of Colliers and /or its licensor(s). © 2025. All rights reserved. This communication is not intended to cause or induce breach of an existing listing agreement.



915 34th St

Floor Plan

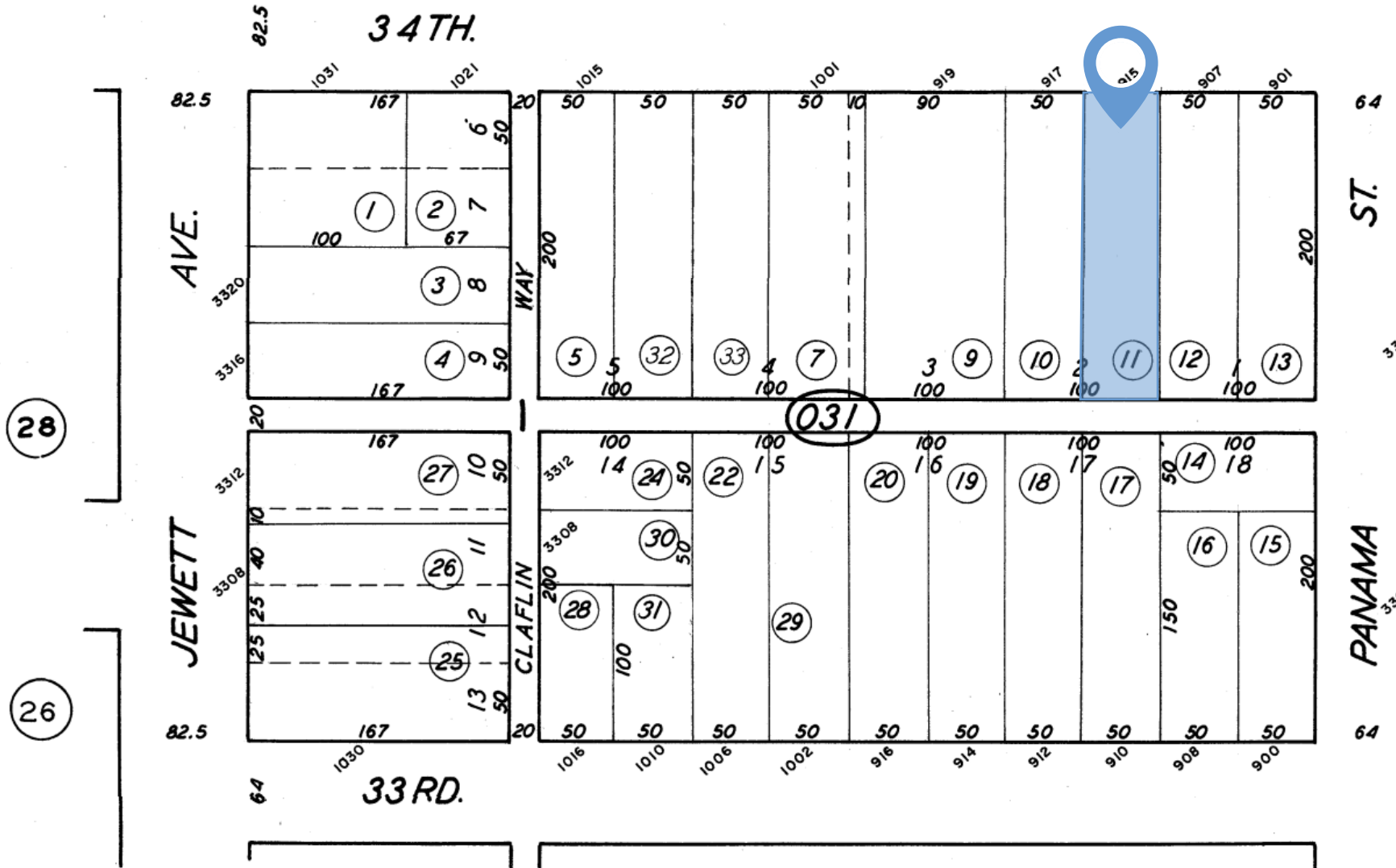


*Not to scale



915 34th St

Parcel Map





Location Aerial

Demographics



Population
 1 Mile: 12,877
 3 Mile: 121,720
 5 Mile: 275,658



Daytime Population
 1 Mile: 29,109
 3 Mile: 165,037
 5 Mile: 320,256



Businesses
 1 Mile: 1,291
 3 Mile: 7,094
 5 Mile: 12,423



Median Age
 1 Mile: 32.4
 3 Mile: 32.1
 5 Mile: 32.6



Households
 1 Mile: 4,718
 3 Mile: 40,325
 5 Mile: 90,893



Average HH Income
 1 Mile: \$56,828
 3 Mile: \$60,753
 5 Mile: \$72,960

Photos



Contact Us:

Oscar Baltazar

Senior Vice President | Principal
License No. 01263421
+1 661 631 3819
oscar.baltazar@colliers.com

Ryan Skidmore

Associate | Central Cal
License No. 02205007
+1 661 631 3828
ryan.skidmore@colliers.com

Colliers International

License No. 00452468
10000 Stockdale Hwy, Suite 102
Bakersfield, CA 93311
colliers.com/bakersfield