



# 2621 Eastlake Ave E

Seattle, WA

For Lease  
or Sale

3,846 SF  
Standalone  
Building



# PROPERTY HIGHLIGHTS

**Lease Rate:** \$26-\$29/SF, modified gross

**Sale Price:** \$2,900,000

10 private offices & large conference room

2 large decks with views of Lake Union

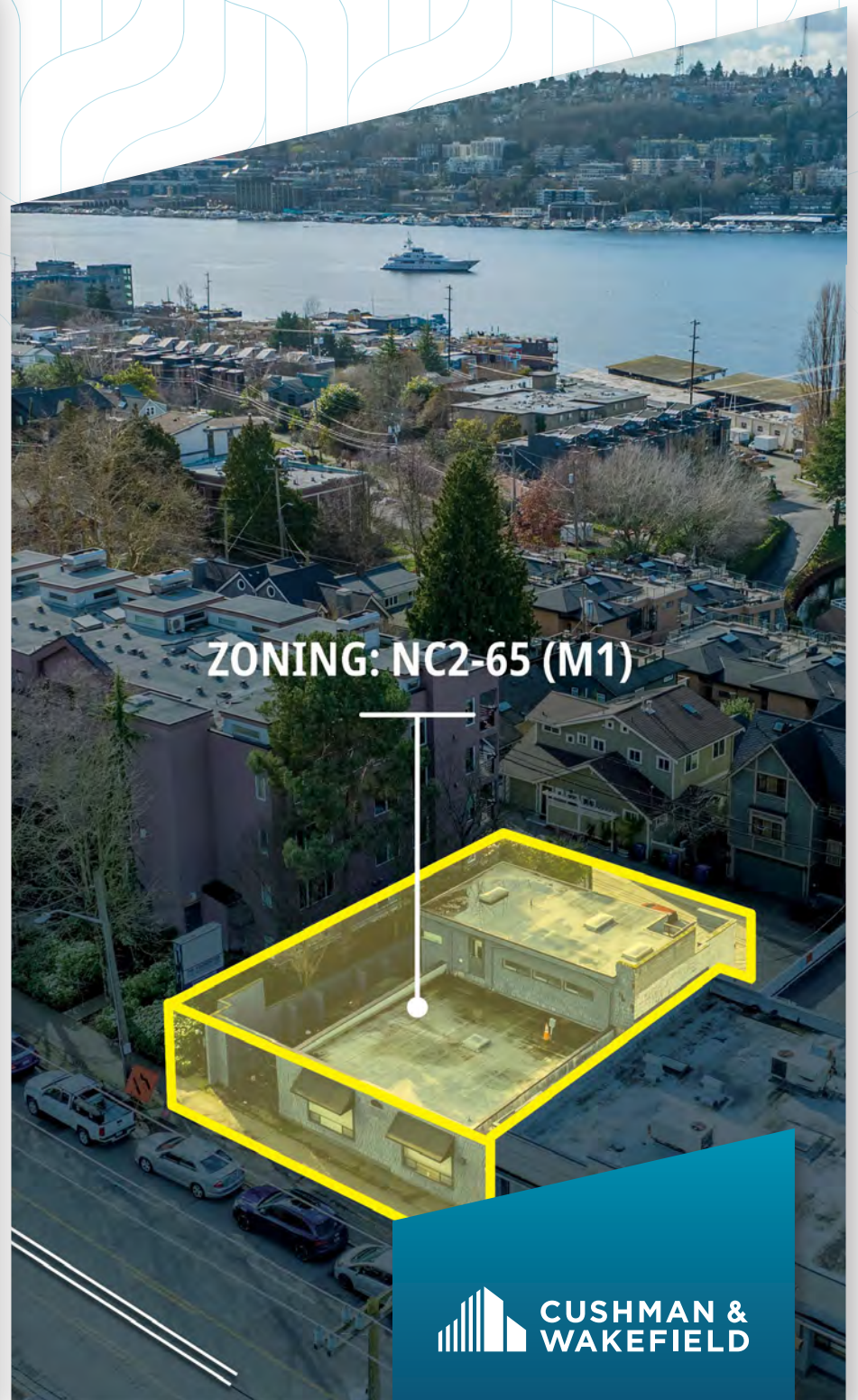
9 free parking stalls

New carpet and paint

2 in-suite showers

Highly visible signage on Eastlake Ave E

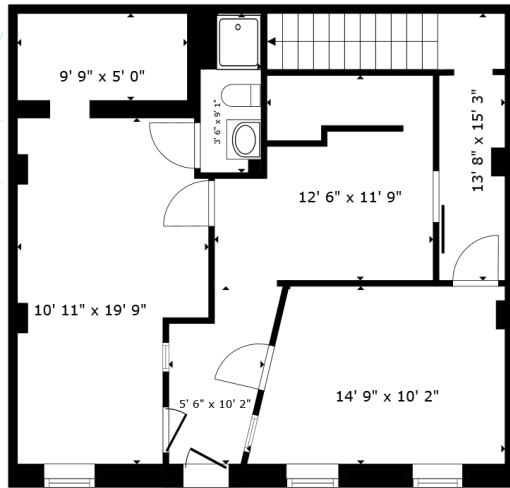
Fully Permitted 54-Unit SEDU Project



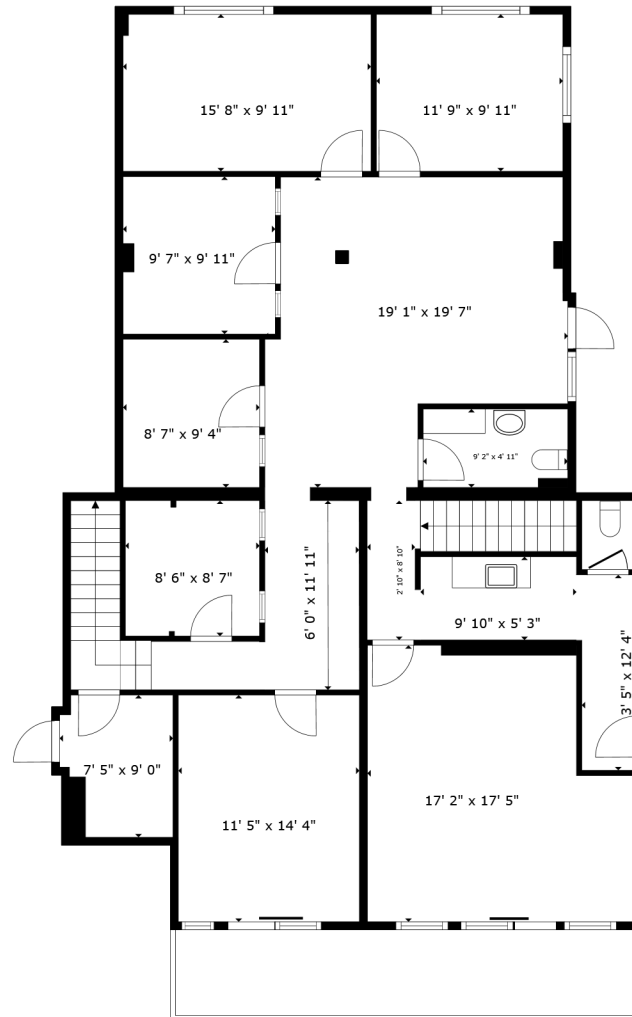
# FLOOR PLANS



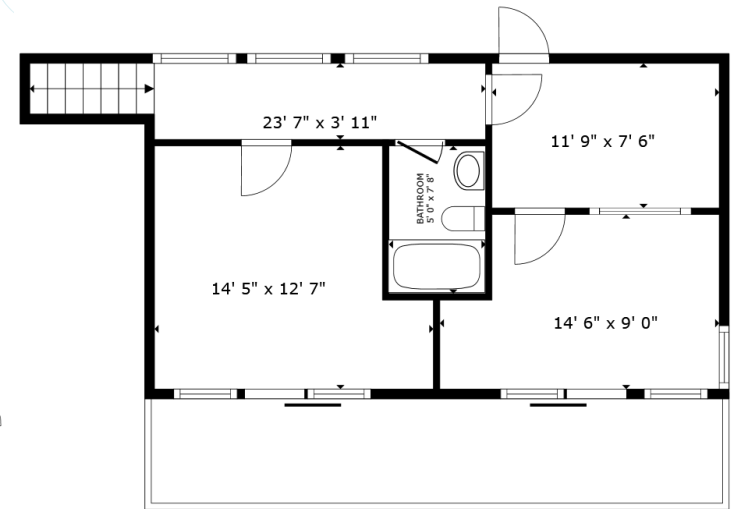
[VIEW VIRTUAL TOUR](#)



**FLOOR 1**



**FLOOR 2**

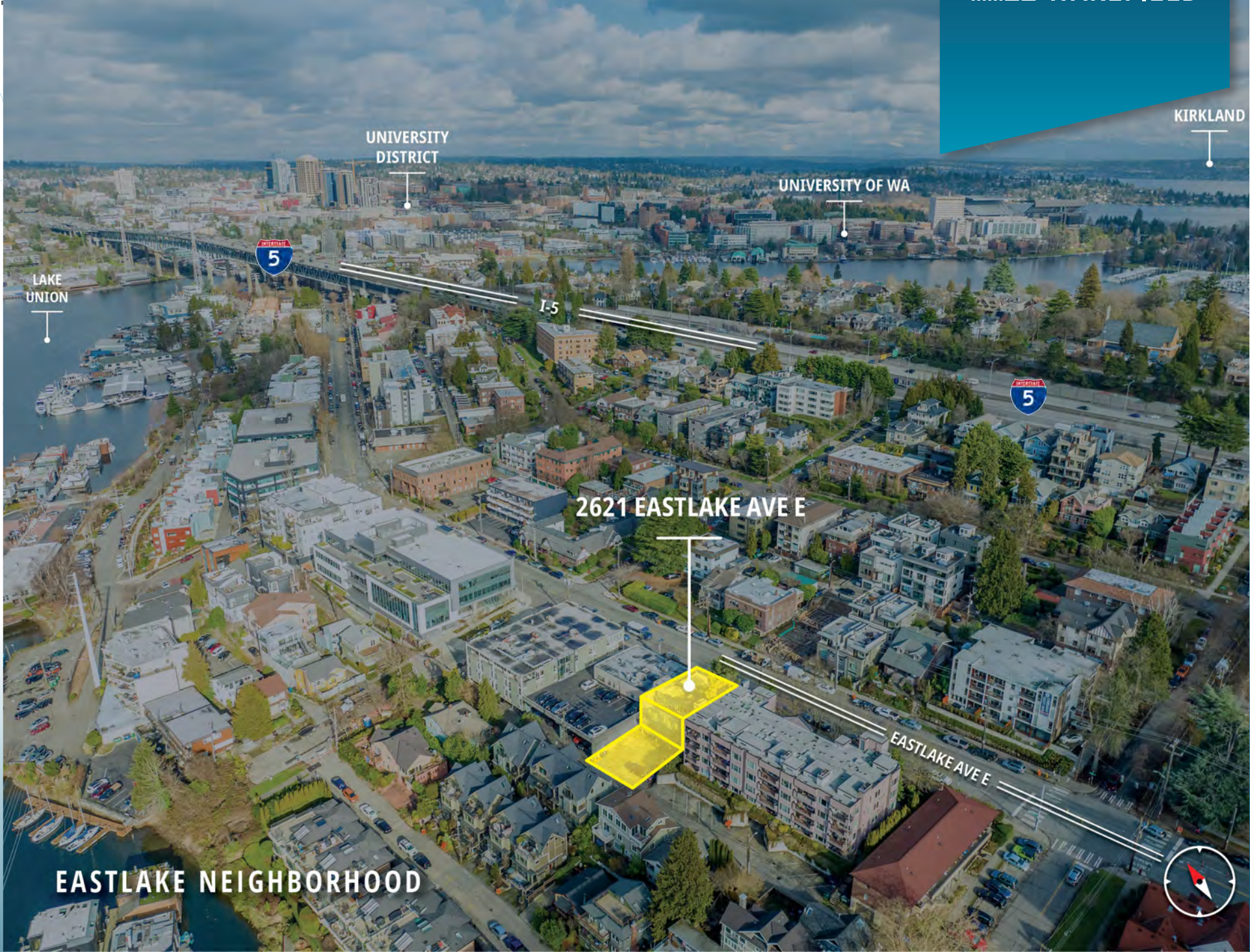


**FLOOR 3**



**CUSHMAN &  
WAKEFIELD**

**2621 EASTLAKE AVE E**  
SEATTLE, WA





**2621 EASTLAKE AVE E**  
SEATTLE, WA

## Leasing Contact:

**ELLEN AKOPYAN**

ASSOCIATE

+1 206 800 1788

[ellen.akopyan@cushwake.com](mailto:ellen.akopyan@cushwake.com)

## Sale Contact:

**DAN CHHAN**

MANAGING DIRECTOR

+1 206 321 2047

[dan.chhan@cushwake.com](mailto:dan.chhan@cushwake.com)

©2024 Cushman & Wakefield. All rights reserved. The information contained in this communication is strictly confidential. This information has been obtained from sources believed to be reliable but has not been verified. NO WARRANTY OR REPRESENTATION, EXPRESS OR IMPLIED, IS MADE AS TO THE CONDITION OF THE PROPERTY (OR PROPERTIES) REFERENCED HEREIN OR AS TO THE ACCURACY OR COMPLETENESS OF THE INFORMATION CONTAINED HEREIN, AND SAME IS SUBMITTED SUBJECT TO ERRORS, OMISSIONS, CHANGE OF PRICE, RENTAL OR OTHER CONDITIONS, WITHDRAWAL WITHOUT NOTICE, AND TO ANY SPECIAL LISTING CONDITIONS IMPOSED BY THE PROPERTY OWNER(S). ANY PROJECTIONS, OPINIONS OR ESTIMATES ARE SUBJECT TO UNCERTAINTY AND DO NOT SIGNIFY CURRENT OR FUTURE PROPERTY PERFORMANCE.