

1919
COLUMBUS ST
BAKERSFIELD, CA



FOR SALE
\$2,500,000
±21,284 SF ON 2.54 AC



**CUSHMAN &
WAKEFIELD**

// PROPERTY FEATURES



±21,284 SF TOTAL BUILDING*
*PER COUNTY TAX ASSESSOR



±2,349 SF SHOWROOM



±3,951 SF OFFICE (2-STORY)



±3,353 SF MEZZANINE STORAGE



2.54 ACRES LOT SIZE



C-2 CITY OF BAKERSFIELD ZONING



16' CLEAR HEIGHT



2- 18' X 10' ROLL-UP DOORS
2- 8' X 10' ROLL-UP DOORS



126-010-18 APN

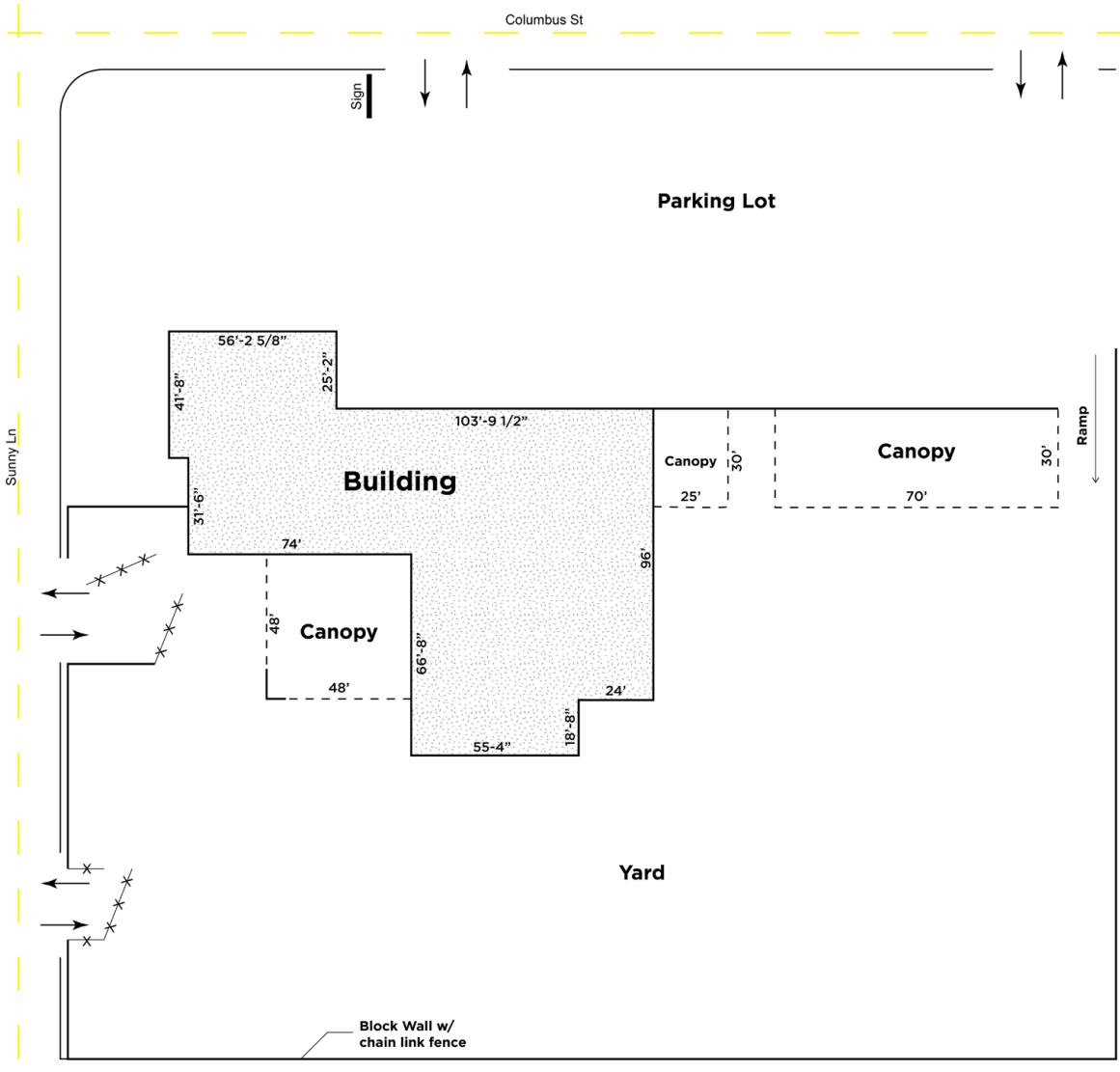


\$2,500,000 ASKING PRICE



// **1919 COLUMBUS ST.**
Bakersfield, CA

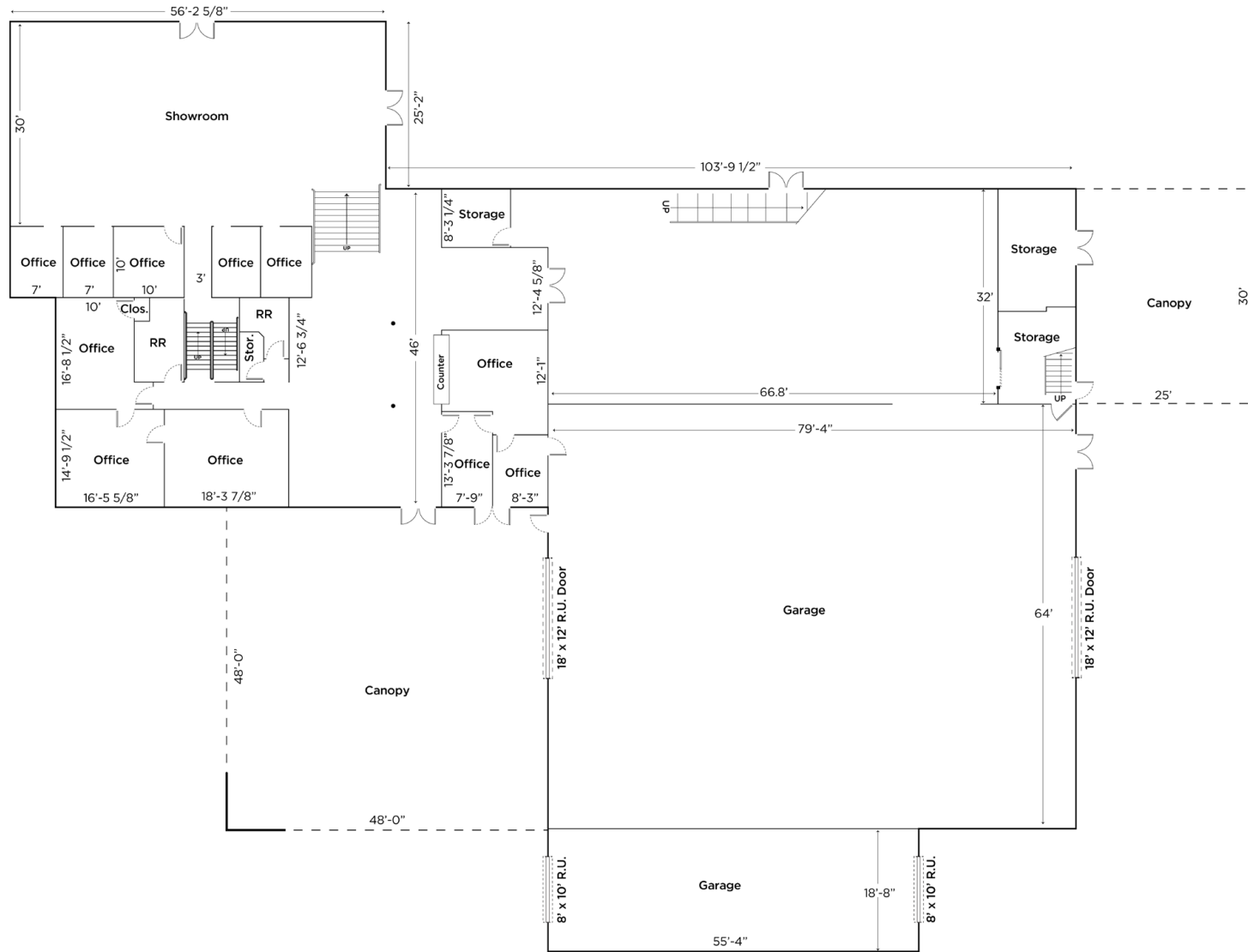
// SITE PLAN



// BIRD'S EYE VIEW

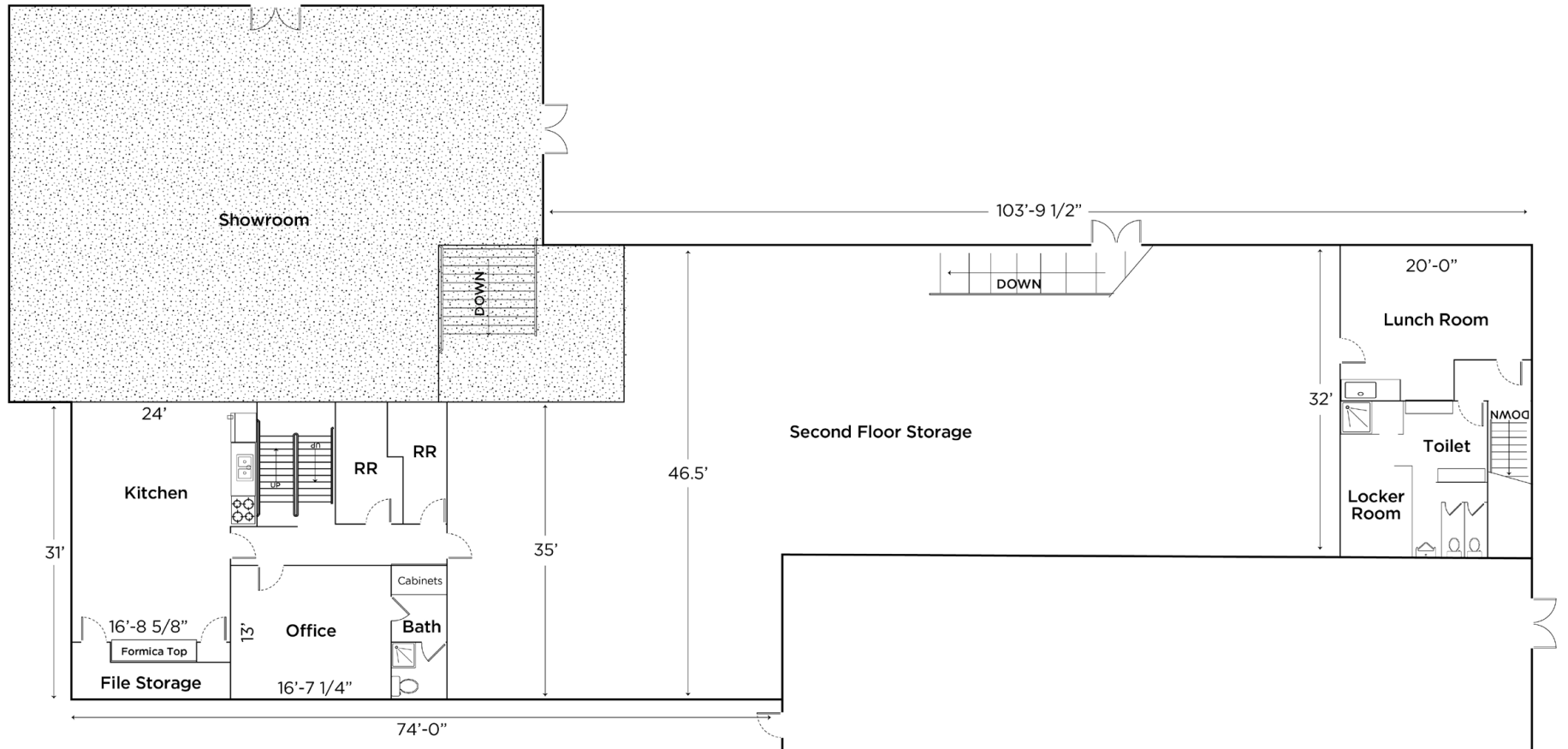


// MAIN FLOOR - FLOOR PLAN



▲
Not to Scale

// SECOND FLOOR - FLOOR PLAN



▲
Not to Scale

// AERIAL

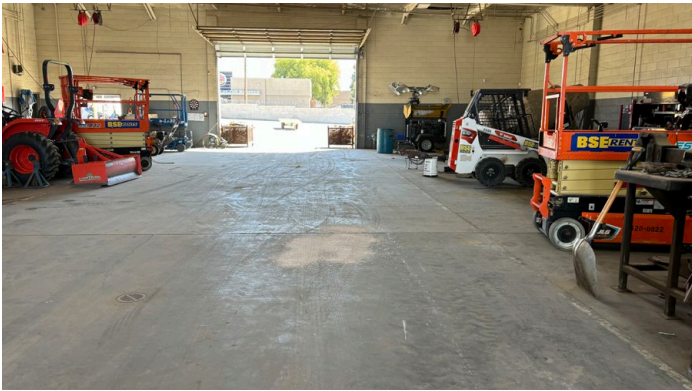
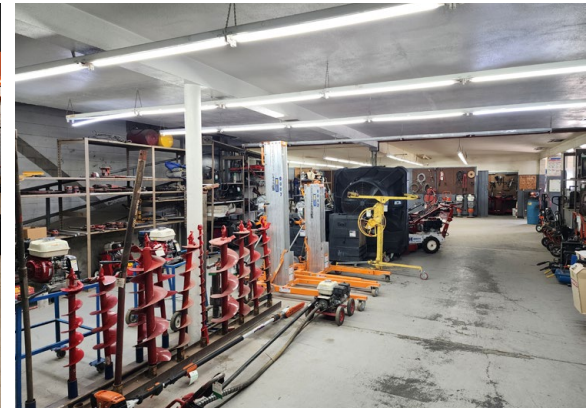


NEIGHBORS

- | | | |
|-----------------------------------|-------------------------------|-------------------------|
| 1. Social Security Administration | 6. Foods Co | 11. Smart & Final |
| 2. O'Reilly Auto Parts | 7. College Heights Elementary | 12. Starbucks |
| 3. Dutch Bros | 8. CVS/Dollar Tree | 13. OfficeMax |
| 4. Dollar Tree | 9. McDonald's | 14. Home Depot |
| 5. Lowe's | 10. DD's Discounts/Albertsons | 15. Walmart Supercenter |

// 1919 COLUMBUS ST.
Bakersfield, CA

// GALLERY



1919
COLUMBUS ST



CONTACT

SCOTT REYNOLDS

Director
+1 661 633 3819
scott.reynolds@cushwake.com
Lic. #01382493

ALEX BALFOUR, SIOR

Executive Director
+1 661 304 2521
alex.balfour@cushwake.com
Lic. #01709847

WAYNE KRESS, SIOR

Executive Director
+1 661 633 3819
wayne.kress@cushwake.com
Lic. #00834680

COBY VANCE

Senior Director
+1 661 633 3807
coby.vance@cushwake.com
Lic. #01449929

5060 California Avenue
Suite 1000
Bakersfield, CA 93309
cushmanwakefield.com
Lic. #01880493

©2024 Cushman & Wakefield. All rights reserved. The material in this presentation has been prepared solely for information purposes, and is strictly confidential. Any disclosure, use, copying or circulation of this presentation (or the information contained within it) is strictly prohibited, unless you have obtained Cushman & Wakefield's prior written consent. The views expressed in this presentation are the views of the author and do not necessarily reflect the views of Cushman & Wakefield. Neither this presentation nor any part of it shall form the basis of, or be relied upon in connection with any offer, or act as an inducement to enter into any contract or commitment whatsoever. NO REPRESENTATION OR WARRANTY IS GIVEN, EXPRESS OR IMPLIED, AS TO THE ACCURACY OF THE INFORMATION CONTAINED WITHIN THIS PRESENTATION, AND CUSHMAN & WAKEFIELD IS UNDER NO OBLIGATION TO SUBSEQUENTLY CORRECT IT IN THE EVENT OF ERRORS.