



**PREMIER**  
COMMERCIAL  
PROPERTIES



# Land for Sale

167th Ave NE & Hwy 65, Ham Lake, MN 55304

## **PROPERTY DETAILS**

Beautiful hilltop setting along Highway 65  
Access to Highway 65 via 167th Avenue NE  
CD zoning - Retail, office, light manufacturing, vet clinic  
8.35 acres—approximately 3 acres useable  
Capable of up to 8,000sf building  
908' of frontage along Highway 65  
Outdoor storage allowed with CIP  
Property depth is 400'  
35,000 vehicles per day

### **PROPERTY DETAILS**

SALE PRICE: \$90,000

PROPERTY TAXES: \$2,785.03 (2018)

### **FOR MORE INFORMATION, CONTACT**

Marty Fisher

763.862.2005

[mfisher@premiercommercialproperties.com](mailto:mfisher@premiercommercialproperties.com)





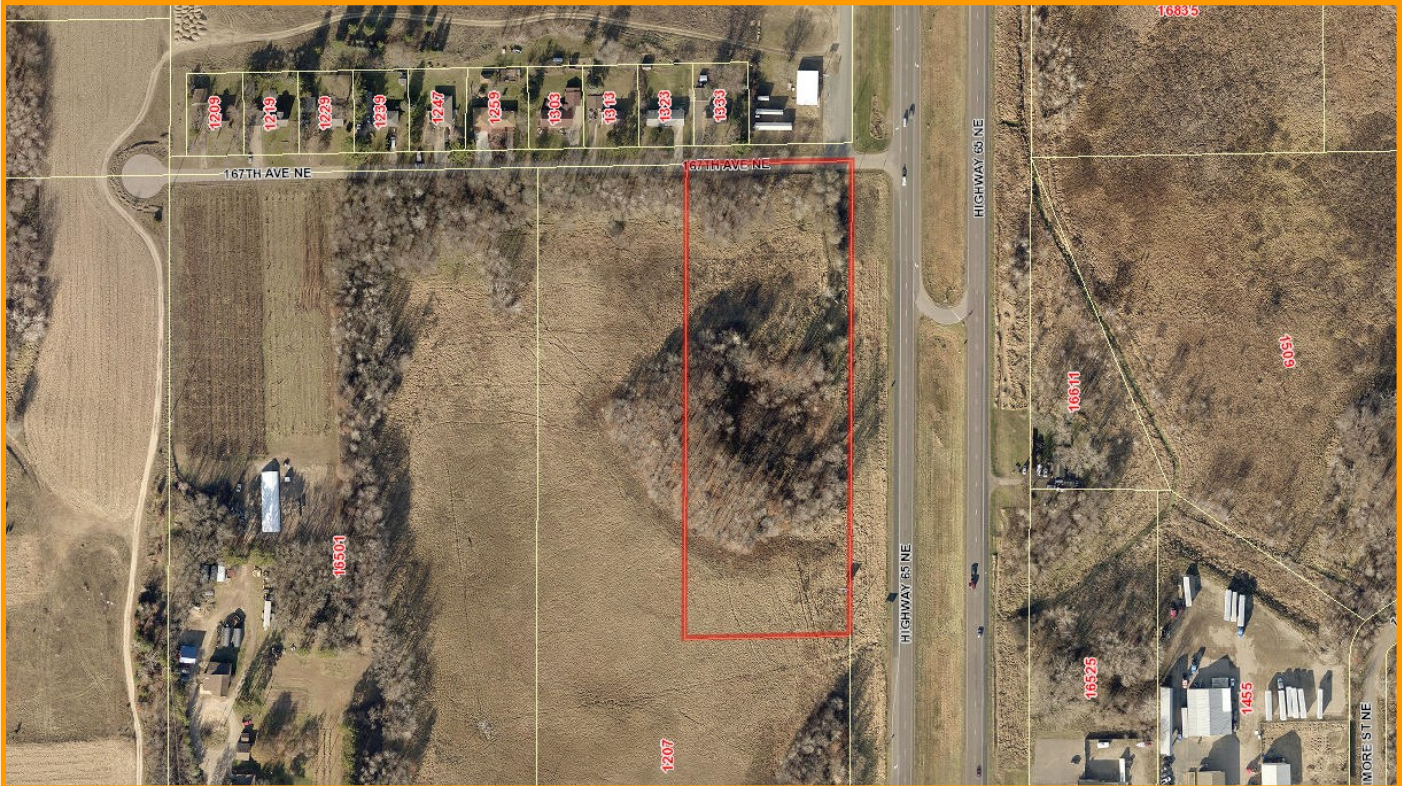
**PREMIER**  
COMMERCIAL  
PROPERTIES

# Land for Sale

167th Ave NE & Hwy 65 | Ham Lake, MN 55304

FOR MORE INFORMATION, CONTACT

Marty Fisher | 763.862.2005 | [mfisher@premiercommercialproperties.com](mailto:mfisher@premiercommercialproperties.com)



299 Coon Rapids Blvd NW | Coon Rapids, MN 55433 | [premiercommercialproperties.com](http://premiercommercialproperties.com)





**PREMIER**  
COMMERCIAL  
PROPERTIES

# Land for Sale

167th Ave NE & Hwy 65 | Ham Lake, MN 55304

FOR MORE INFORMATION, CONTACT

Marty Fisher | 763.862.2005 | mfisher@premiercommercialproperties.com

