

# CURRENTLY OWNER OCCUPIED WILL VACATE UPON SALE



**Offered at \$1,750,000**

**1600 SW Market Street, Lee's Summit, MO 64081**

## Property Description

This prime commercial property offers a versatile space ideal for various business operations. Located at 1600 SW Market Street in Lee's Summit, MO, this 10,848 sq. ft building sits on a 1.6-acre lot, providing ample space and excellent frontage exposure. The property has been completely remodeled and features 17 spacious offices, 6 bathrooms, a warehouse, and a showroom.

The full kitchen and conference rooms enhance the functionality of the space, making it ideal for companies looking for a comprehensive solution for their business needs. Additionally, there is plenty of storage and ample parking available.

## Property Highlights

- Offices: 17
- Bathrooms: 6
- Warehouse: Included
- Showroom: Included
- Full Kitchen: Included
- Conference Rooms: Multiple
- Storage: Abundant
- Parking: Ample
- Frontage Exposure: Excellent

**FOR MORE INFORMATION PLEASE CONTACT**

### RE/MAX Innovations

**Robin Clark**

816-777-3250

License Number: 2008009278

**David Williams**

816-889-8193

License Number: 2020007931

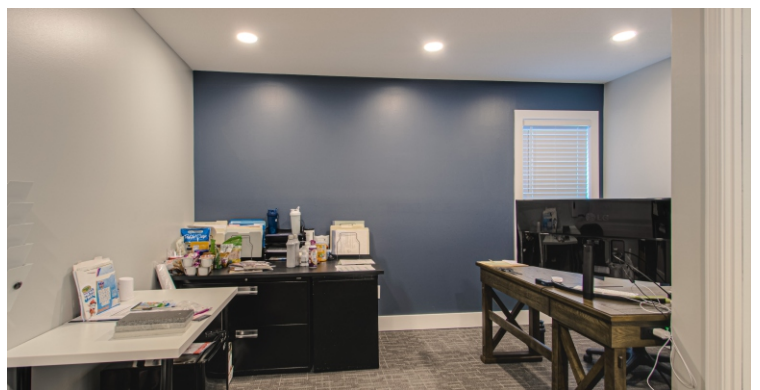
All information furnished regarding property for sale, rental or financing is from sources deemed reliable, but no warranty or representation is made to the accuracy thereof and same is submitted to errors, omissions, change of price, rental or other conditions prior to sale, lease or financing or withdrawal without notice. No liability of any kind is to be imposed on the broker here in.





# Interior Pictures

1600 SW Market Street, Lee's Summit, MO 64081



FOR MORE INFORMATION PLEASE CONTACT

## RE/MAX Innovations

**Robin Clark**

816-777-3250

License Number: 2008009278

**David Williams**

816-889-8193

License Number: 2020007931

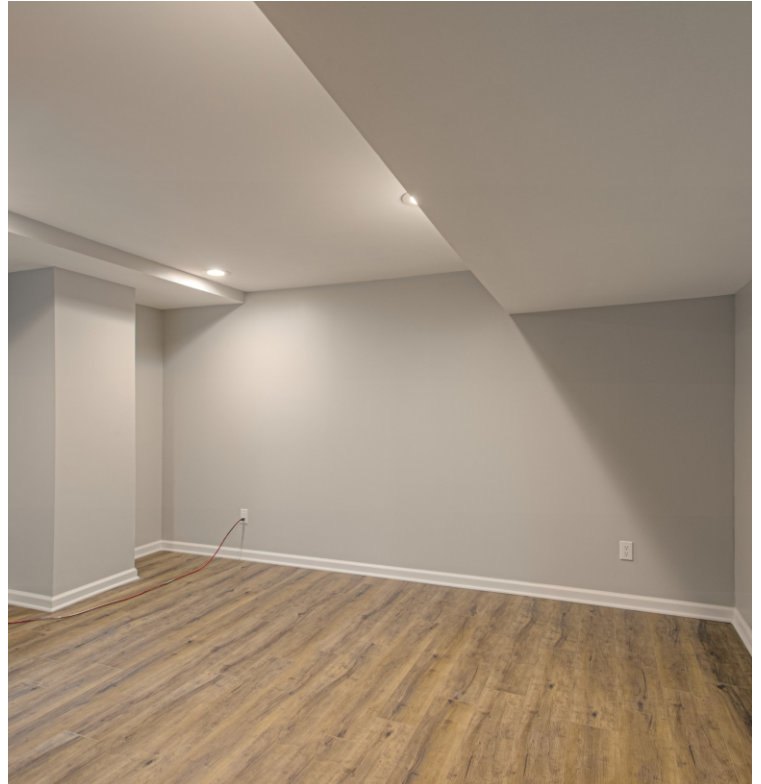
All information furnished regarding property for sale, rental or financing is from sources deemed reliable, but no warranty or representation is made to the accuracy thereof and same is submitted to errors, omissions, change of price, rental or other conditions prior to sale, lease or financing or withdrawal without notice. No liability of any kind is to be imposed on the broker here in.





# Interior Pictures

1600 SW Market Street, Lee's Summit, MO 64081



FOR MORE INFORMATION PLEASE CONTACT

## RE/MAX Innovations

**Robin Clark**

816-777-3250

License Number: 2008009278

**David Williams**

816-889-8193

License Number: 2020007931

All information furnished regarding property for sale, rental or financing is from sources deemed reliable, but no warranty or representation is made to the accuracy thereof and same is submitted to errors, omissions, change of price, rental or other conditions prior to sale, lease or financing or withdrawal without notice. No liability of any kind is to be imposed on the broker here in.





# Exterior Pictures

1600 SW Market Street, Lee's Summit, MO 64081



FOR MORE INFORMATION PLEASE CONTACT

## RE/MAX Innovations

**Robin Clark**

816-777-3250

License Number: 2008009278

**David Williams**

816-889-8193

License Number: 2020007931

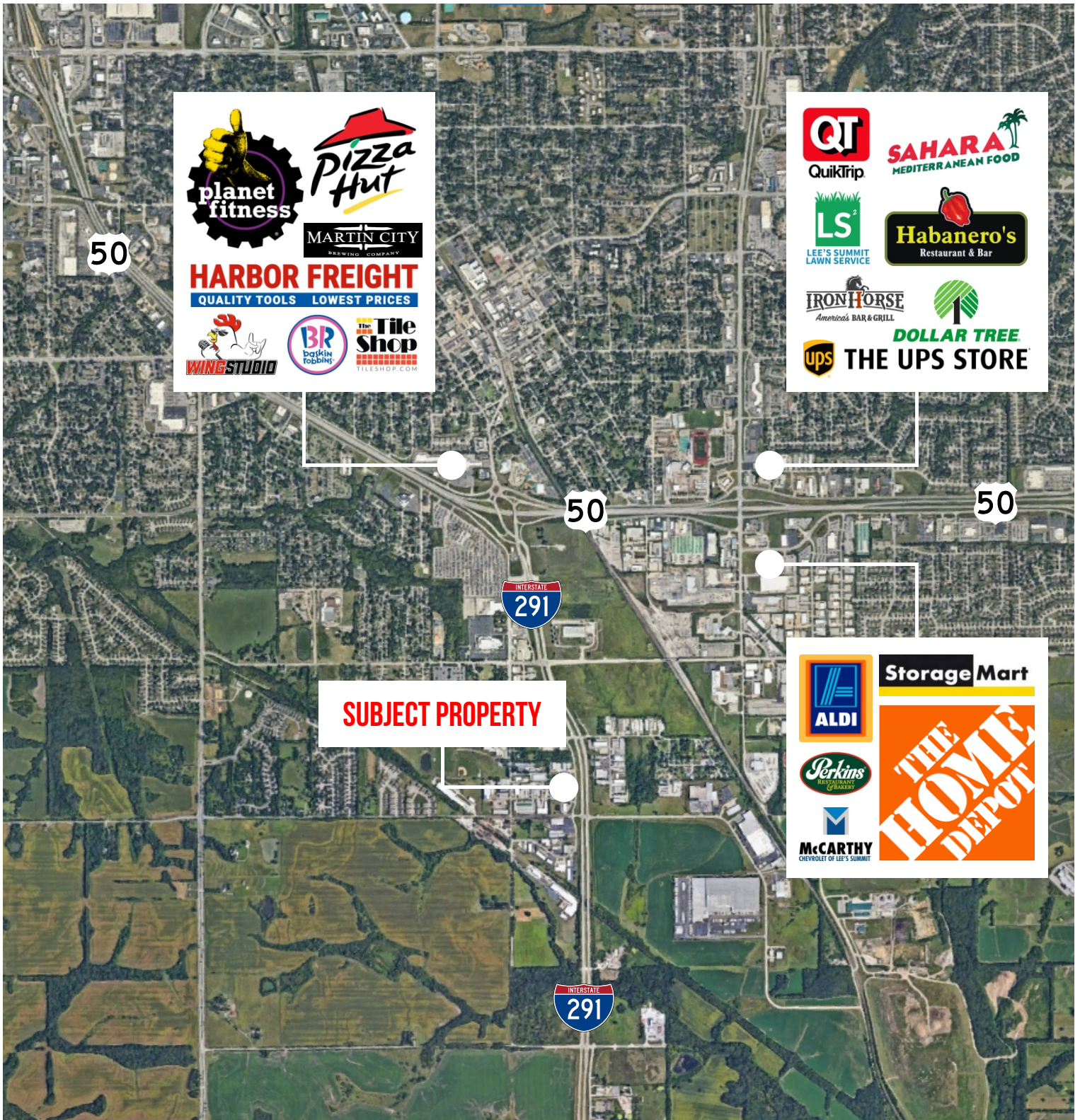
All information furnished regarding property for sale, rental or financing is from sources deemed reliable, but no warranty or representation is made to the accuracy thereof and same is submitted to errors, omissions, change of price, rental or other conditions prior to sale, lease or financing or withdrawal without notice. No liability of any kind is to be imposed on the broker here in.





# Aerial Map

1600 SW Market Street, Lee's Summit, MO 64081



FOR MORE INFORMATION PLEASE CONTACT

## RE/MAX Innovations

**Robin Clark**

816-777-3250

License Number: 2008009278

**David Williams**

816-889-8193

License Number: 2020007931

All information furnished regarding property for sale, rental or financing is from sources deemed reliable, but no warranty or representation is made to the accuracy thereof and same is submitted to errors, omissions, change of price, rental or other conditions prior to sale, lease or financing or withdrawal without notice. No liability of any kind is to be imposed on the broker here in.

