



100 N 20th Street

Philadelphia, PA 19103

*- Class A Boutique Building
in the Heart of Center City -*



2,280 SF – 8,525 SF availabilities



Building Highlights



Boutique
Class A Office
Property



Tenant-
controlled
HVAC system



Free parking
space per
every 3,500 SF



Renovated
lobby &
restrooms



Direct
elevator
exposure

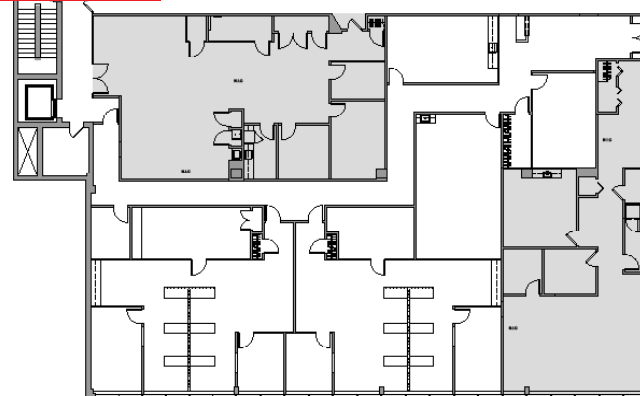


\$25.00/SF
+ Electric

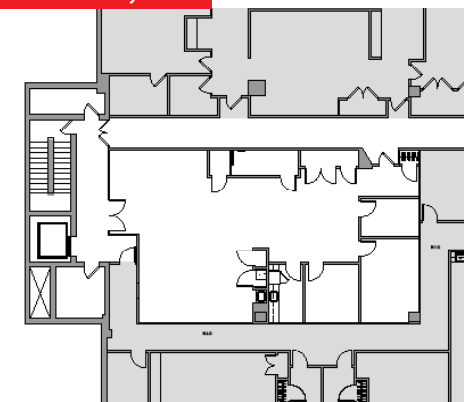


Tenant
signage
available

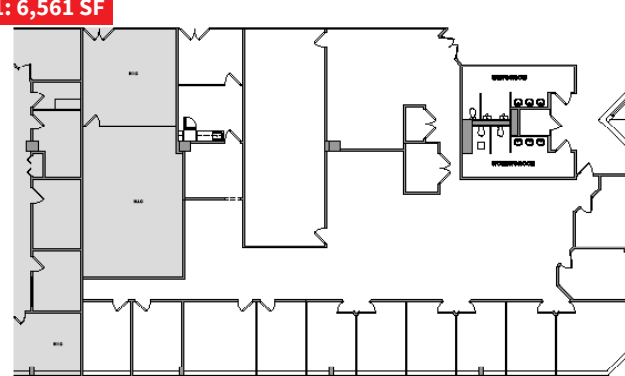
Suite 202: 6,245 SF



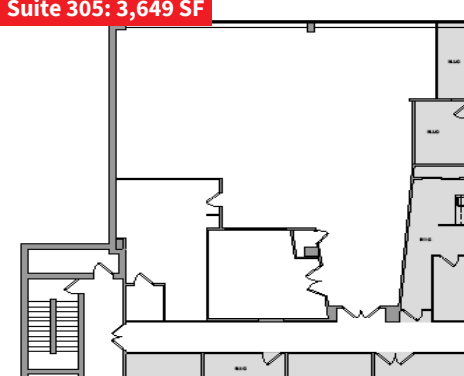
Suite 210: 2,280 SF



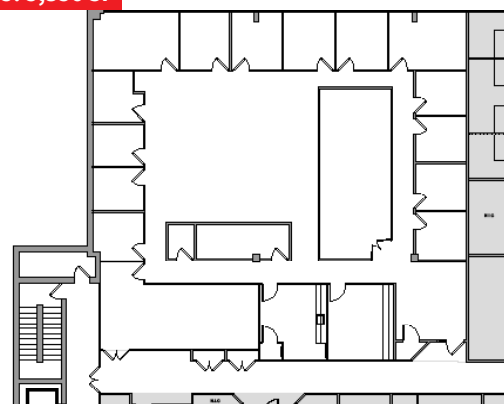
Suite 301: 6,561 SF



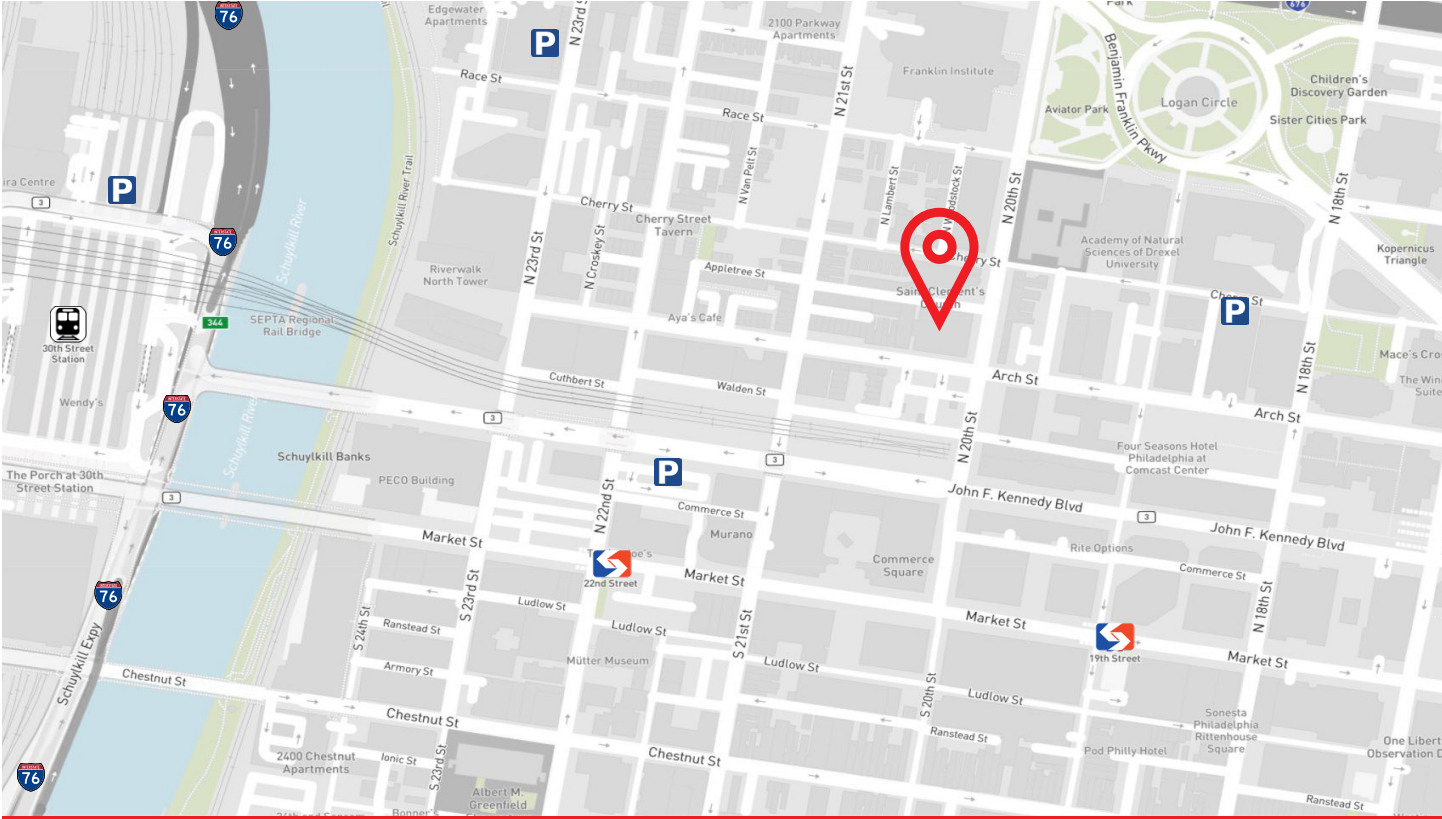
Suite 305: 3,649 SF



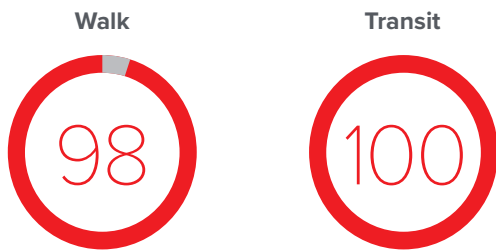
Suite 405: 5,356 SF



100 N. 20th Street is a boutique, class-A office building located in the Philadelphia CBD. The property is less than one-half mile from 30th Street Station & Suburban Station and just a few blocks from major highway access, making it easily accessible by public transit and by car. Parking is available on-site, with 1 free parking space available for every 3,500 SF leased.



Transit Scores



Contact

Kevin Maloney
 Managing Director
 +1 215 399 1833
kevinm.maloney@am.jll.com

David Mendez
 Senior Vice President
 +1 215 399 1835
david.mendez@am.jll.com

Katherine Hollingsworth
 Associate
 +1 267 907 4936
kat.hollingsworth@am.jll.com



Although information has been obtained from sources deemed reliable, JLL does not make any guarantees, warranties or representations, express or implied, as to the completeness or accuracy as to the information contained herein. Any projections, opinions, assumptions or estimates used are for example only. There may be differences between projected and actual results, and those differences may be material. JLL does not accept any liability for any loss or damage suffered by any party resulting from reliance on this information. If the recipient of this information has signed a confidentiality agreement with JLL regarding this matter, this information is subject to the terms of that agreement. ©2022. Jones Lang LaSalle IP, Inc. All rights reserved.