



835 W Genesee St

Lansing, Michigan 48915

Property Highlights

- Huge development opportunity - 34-36 units possible
- 2.166 acres
- Former school
- Downtown Lansing
- Near Lansing Community College main campus
- Commercial-Improved zoning

Offering Summary

Sale Price:	\$339,000
Building Size:	23,590 SF
Lot Size:	2.166 Acres

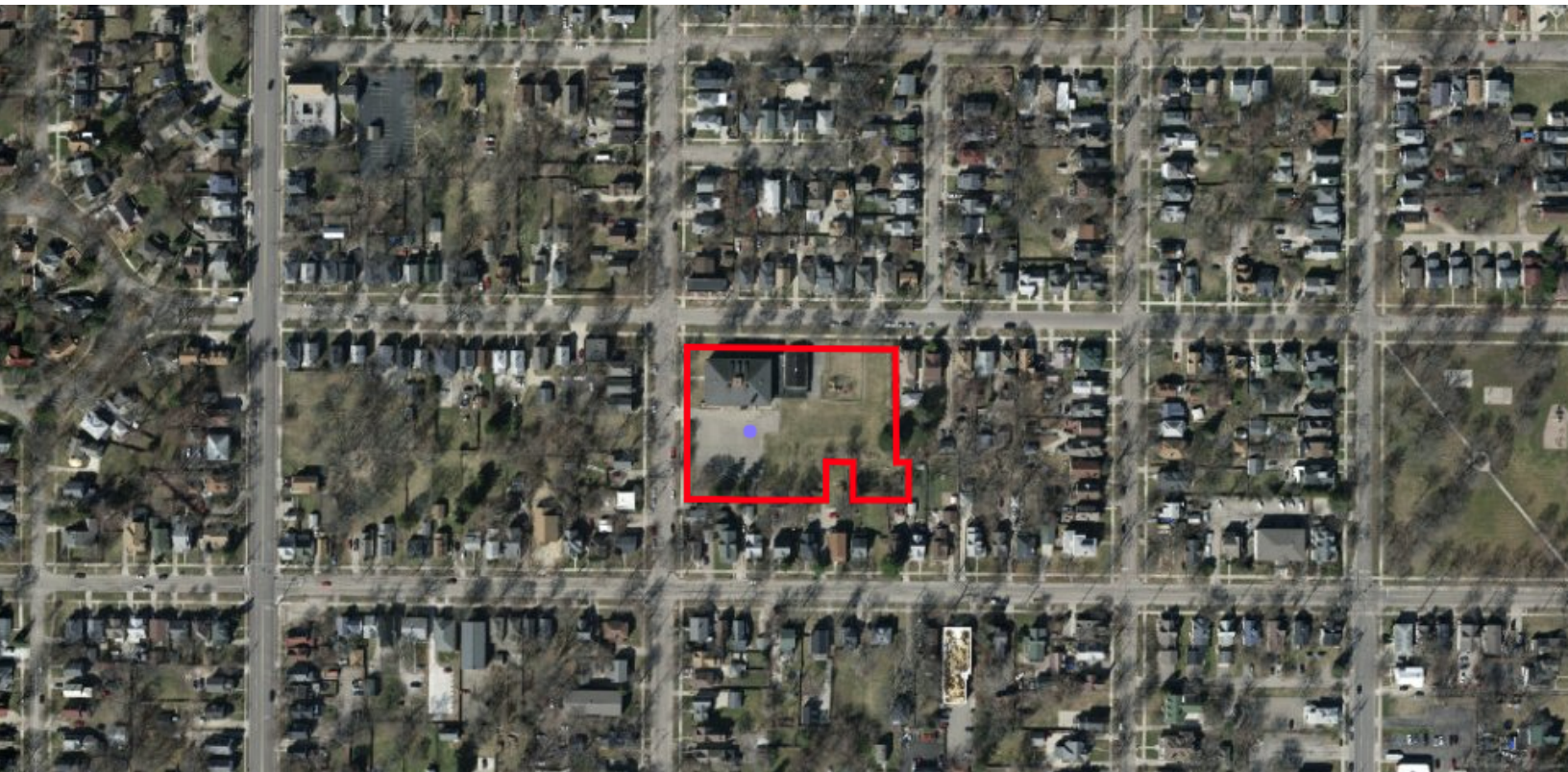
For More Information

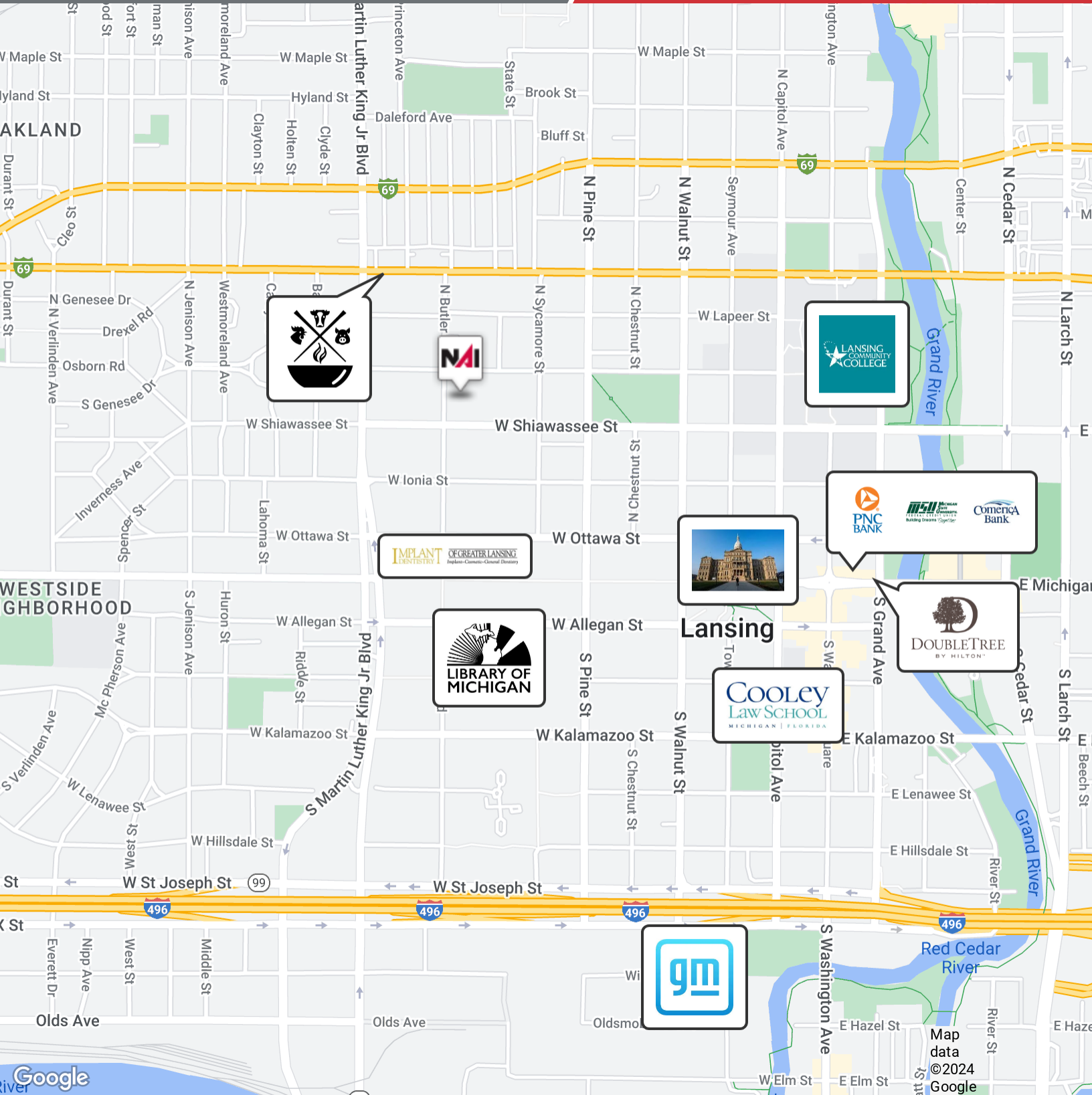
Gino Baldino

Commercial Advisor

O: 517 487 9222 | C: 517 202 2137

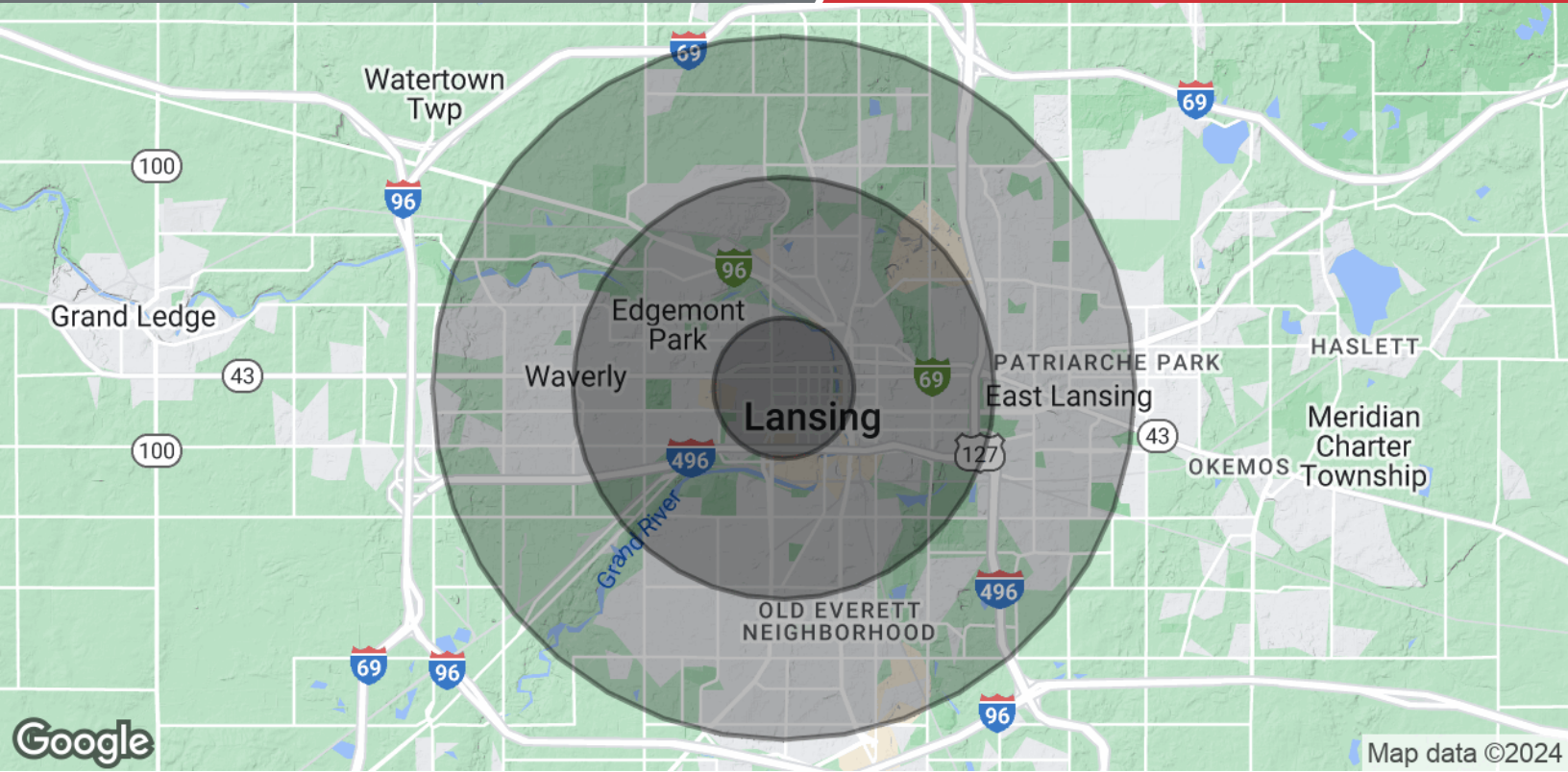
gbaldino@naimidmichigan.com





NO WARRANTY OR REPRESENTATION, EXPRESS OR IMPLIED, IS MADE AS TO THE ACCURACY OF THE INFORMATION CONTAINED HEREIN, AND THE SAME IS SUBMITTED SUBJECT TO ERRORS, OMISSIONS, CHANGE OF PRICE, RENTAL OR OTHER CONDITIONS, PRIOR SALE, LEASE OR FINANCING, OR WITHDRAWAL WITHOUT NOTICE, AND OF ANY SPECIAL LISTING CONDITIONS IMPOSED BY OUR PRINCIPALS. NO WARRANTIES OR REPRESENTATIONS ARE MADE AS TO THE CONDITION OF THE PROPERTY OR ANY HAZARDS CONTAINED THEREIN ARE INTENDED TO BE IMPLIED.

2149 Jolly Road, Suite 200
 Okemos, MI 48864
 517 487 9222 tel
naimidmichigan.com



Population

	1 Mile	3 Miles	5 Miles
Total Population	13,716	85,394	186,196
Average Age	33.1	35.9	34.6
Average Age (Male)	31.7	33.9	32.8
Average Age (Female)	33.6	36.5	35.9

Households & Income

	1 Mile	3 Miles	5 Miles
Total Households	7,305	40,626	82,988
# of Persons per HH	1.9	2.1	2.2
Average HH Income	\$40,630	\$51,867	\$56,242
Average House Value	\$85,080	\$96,636	\$107,726

* Demographic data derived from 2020 ACS - US Census