

FOR LEASE

TEMPERATURE CONTROLLED
INDUSTRIAL BUILDING
22,805 SF



BURBANK AIRPORT COMMERCE CENTER
7525 Lockheed Drive, Burbank, California

Contact Us | Visit Us Online
562.692.2200 | interpresrealty.com





THE OFFERING

interPres Commercial Realty is pleased to present an excellent opportunity to lease a State-of-the-Art, fully temperature-controlled warehouse, located at 7525 Lockheed Drive, Burbank, California. This Corporate Image building is approximately 22,805 square feet, and amenities include ~1,800 square feet of deluxe office space and a beautifully finished break room on the mezzanine level, a covered exterior dock high loading door with full dock package, a ground level loading door, 24' minimum warehouse clearance, calculated sprinkler system for high-pile storage, and heavy power. The site is located in a newer, high image business park, and is centrally located and adjacent to the Hollywood Burbank Airport, with immediate freeway access.

Property Type	Industrial Whse/Dist.
Building Size	22,805 SF
Office	1,800 SF
Warehouse Height	24' Min
Power	400 A/277-480V
Ground Level Door	1
Dock High Positions	1
Sprinklers	Yes
Construction Type	CTU
Year Built	2004
Zoning	M-2



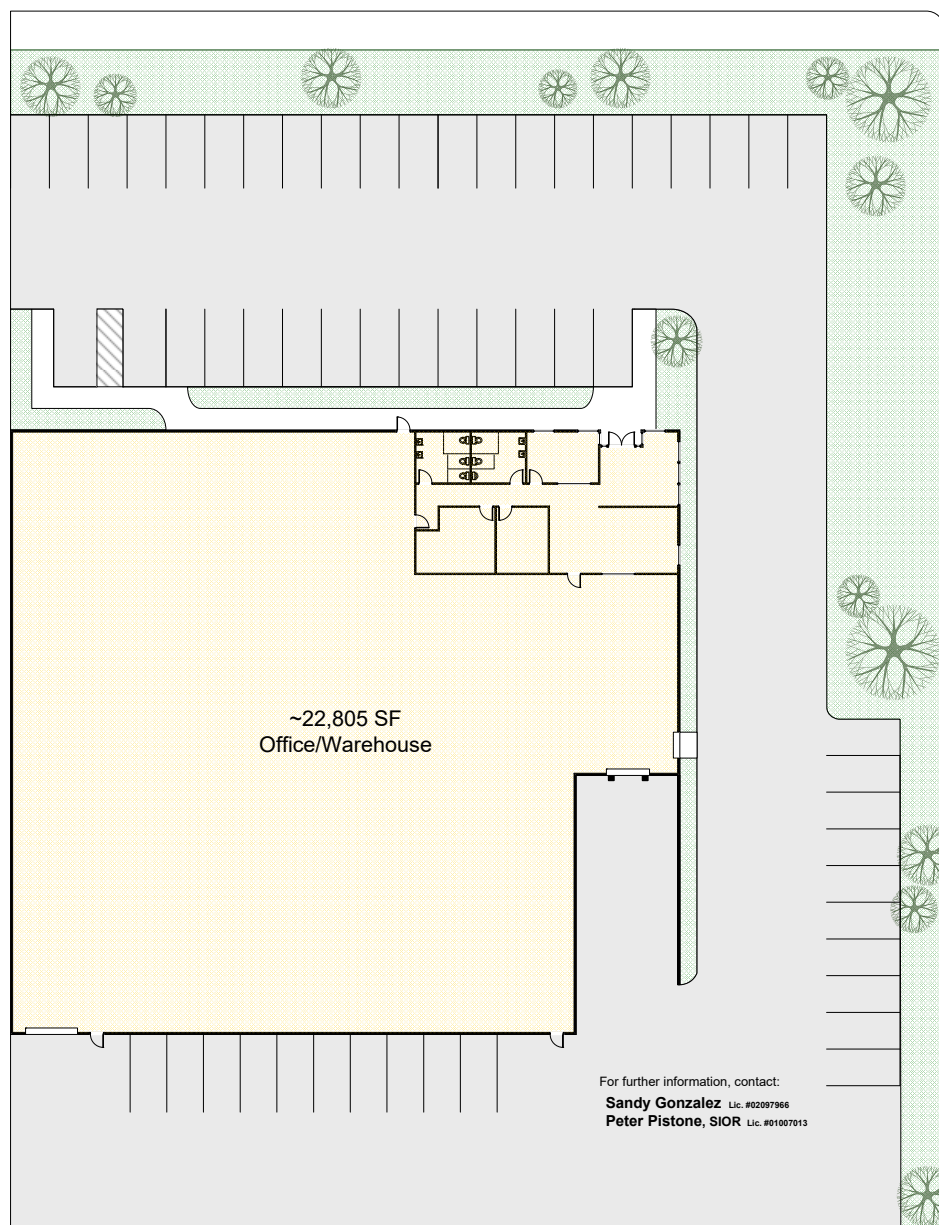






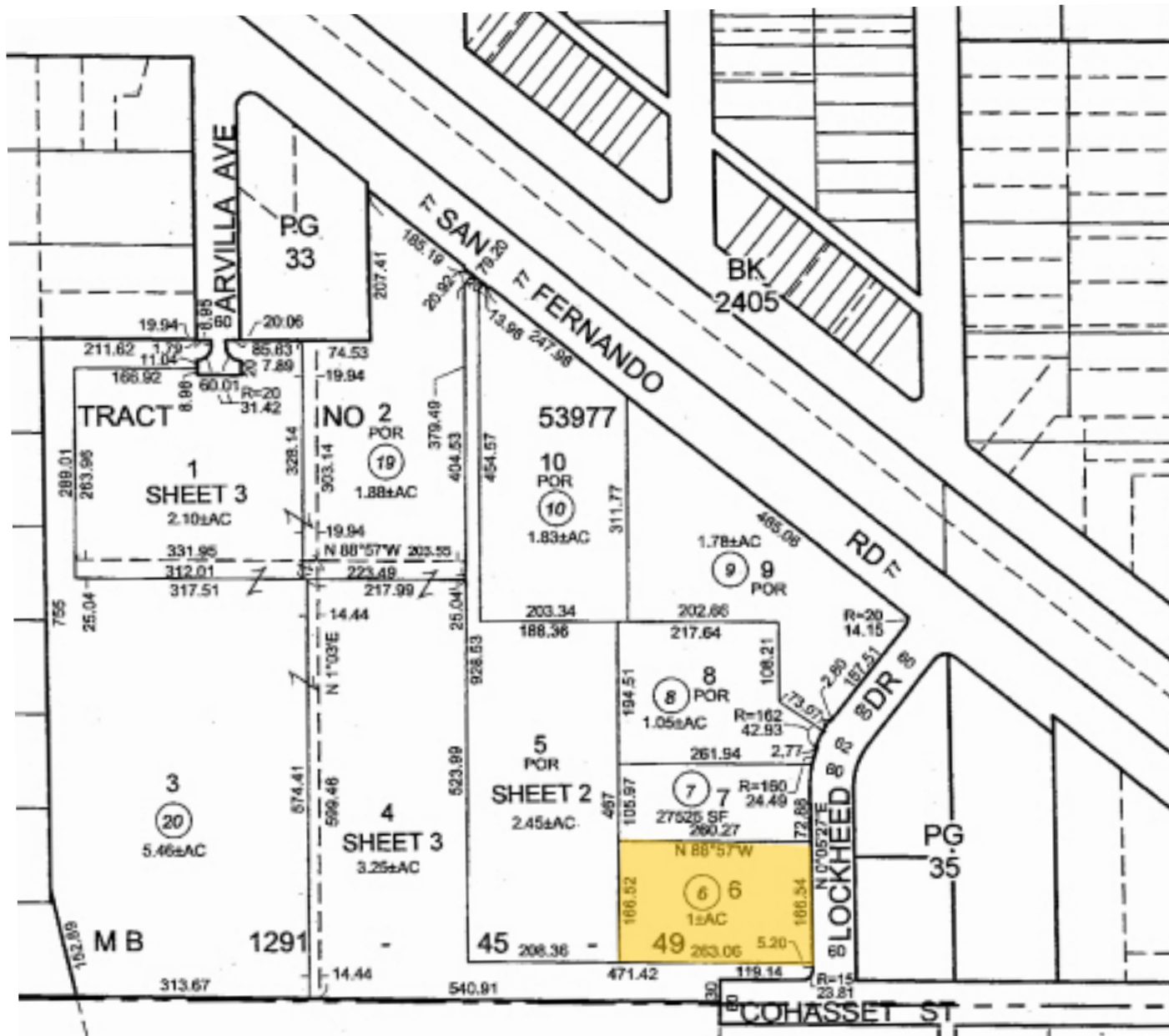
SITE PLAN

LOCKHEED DRIVE



The information contained herein has been obtained from sources we deem reliable. While we have no reason to doubt its accuracy, interPres makes no representation or warranties, expressed or implied. Rendering Not to Scale.





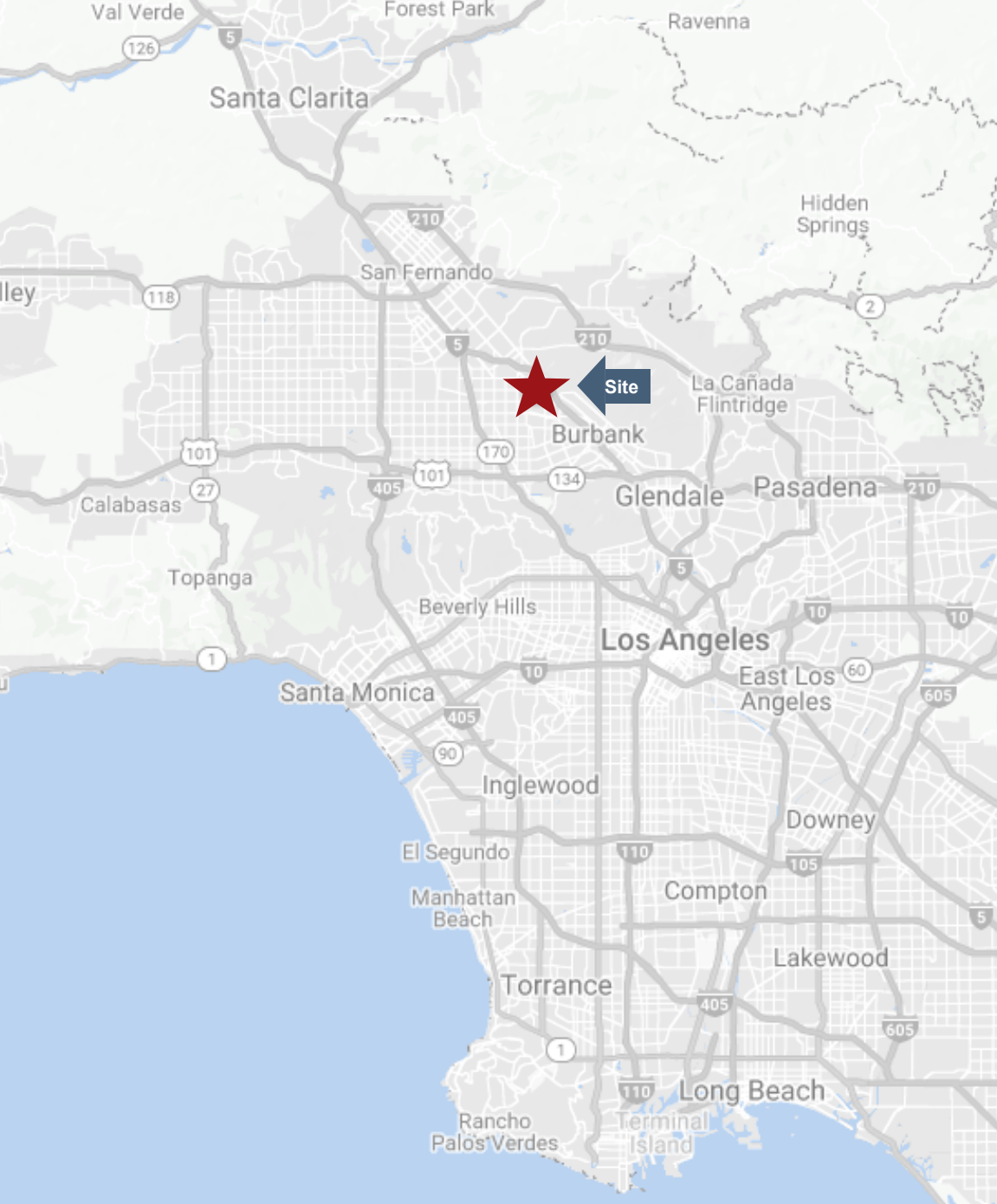
VICINITY MAP



**New Hollywood Burbank
Airport Terminal**

Subject Property





For more information,
please contact us.



Peter Pistone
President
213.418.9200 Direct
peterp@interpresrealty.com
BRE Lic. #01007013

Sandy Gonzalez
Associate Vice President
562.469.5331 Direct
sandyg@interpresrealty.com
BRE Lic. #02097966



The information contained herein has been obtained from sources we deem reliable. While we have no reason to doubt it's accuracy, we do not guarantee it or make any representations about it. interPres Commercial Realty suggests you perform a careful, independent investigation of the property to determine the suitability of the property for your needs. All measurements and specifications are approximate.

CalBRE #01774875

Contact Us | **Visit Us Online**
562.692.2200 | **interpresrealty.com**

CalBRE #01774875

