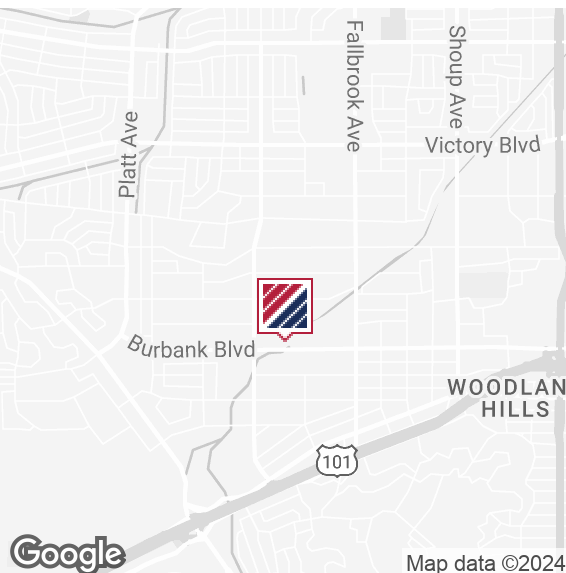




# 23045

BURBANK BOULEVARD  
LOS ANGELES | CA



## FOR LEASE LAND



Rare  
SAN FERNANDO VALLEY



16,000 SF  
LOT SIZE



Approved  
USES TRUCK STORAGE



Access  
BURBANK BLVD.

### PROPERTY HIGHLIGHTS

- ±16,000 SF of land for lease
- Call Broker for Pricing
- Rare West San Fernando Valley land for lease
- Fully fenced and secured
- Excellent access off Burbank Blvd
- Water and Electricity available to site
- Approved uses include Plant/Tree storage for Nurseries, Truck storage for Landscape Maintenance (including Tree Trimming) companies, etc.

FOR MORE INFORMATION PLEASE CONTACT:

**JAMES CONNOR**

SENIOR VICE PRESIDENT

P: 818.449.1624 | M: 805.660.2884

james.connor@daumcommercial.com  
CADRE #00823821

**NATE LENTHALL**

ASSOCIATE

P: 818.449.1637 | M: 805.428.8964

nlenthall@daumcommercial.com  
CADRE #02204207

Although all information is furnished regarding for sale, rental or financing is from sources deemed reliable, such information has not been verified and no express representation is made nor is any to be implied as to the accuracy thereof, and it is submitted subject to errors, omissions, changes of price, rental or other conditions, prior sale, lease or financing, or withdrawal without notice.

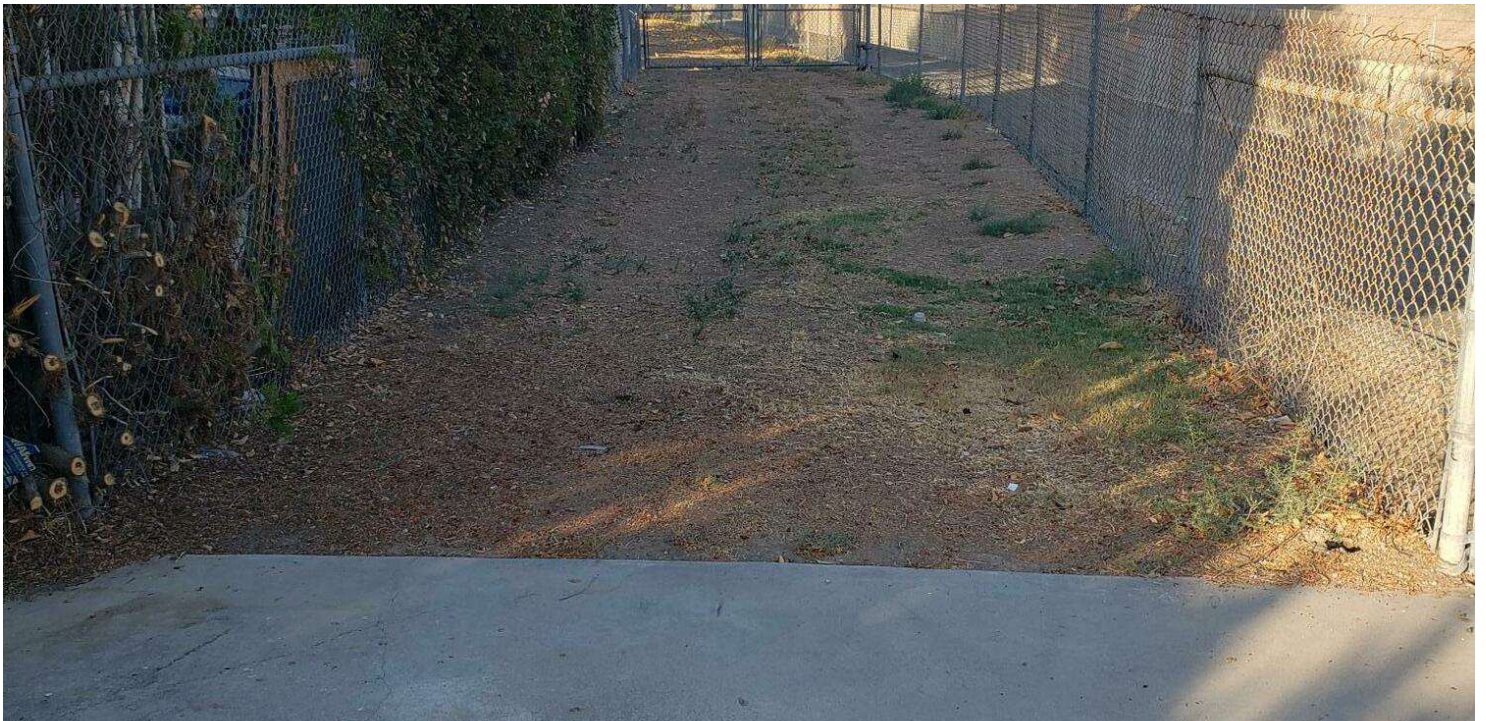
**DAUM**  
COMMERCIAL REAL ESTATE SERVICES



# 23045

BURBANK BOULEVARD  
LOS ANGELES | CA

**FOR LEASE**  
LAND



Although all information is furnished regarding for sale, rental or financing is from sources deemed reliable, such information has not been verified and no express representation is made nor is any to be implied as to the accuracy thereof, and it is submitted subject to errors, omissions, changes of price, rental or other conditions, prior sale, lease or financing, or withdrawal without notice.

**DAUM**  
COMMERCIAL REAL ESTATE SERVICES