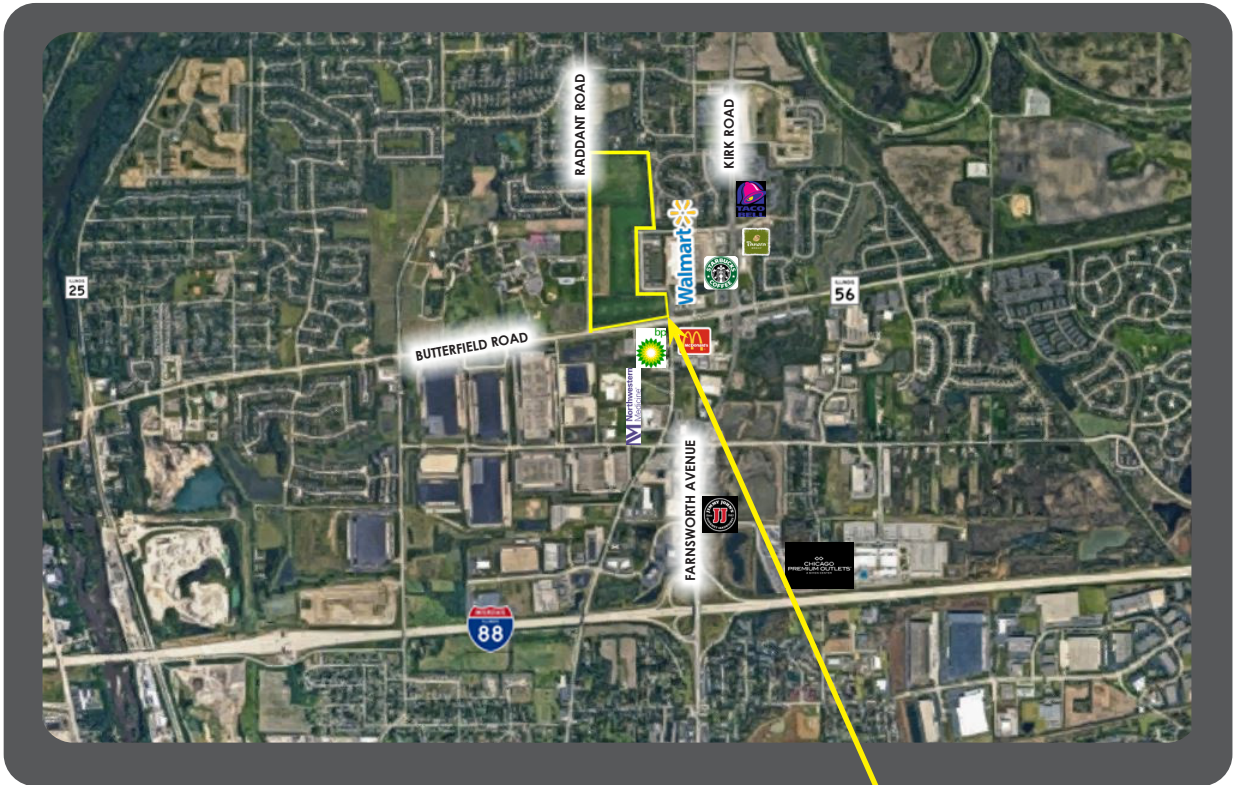


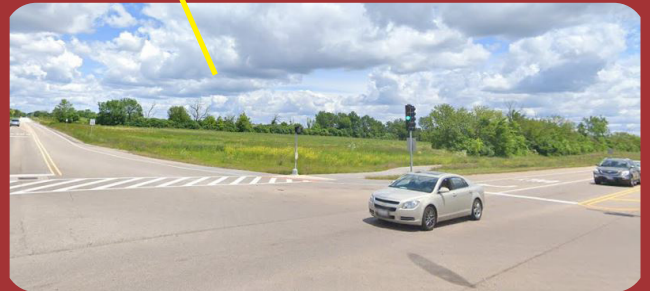
3 S RADDANT ROAD RADDANT & BUTTERFIELD AURORA, ILLINOIS



67+ ACRE DEVELOPMENT SITE

UNDEVELOPED CORNER OF RADDANT AND BUTTERFIELD ROAD!

- 67+ acres of undeveloped land in Aurora
- 4 Parcels Available
- Lot is Easily Divisible for Multiple Tenants or Purchasers
- Over 17,000 Vehicles per Day
- Superior Location near I-88 and Route 56
- Located in the Batavia School District
- Near existing Commercial, Retail and Residential developments.



AUSTIN DEMPSEY

adempsey@beicre.com

NICK SCANLAN

nscanlan@beicre.com

BEI
COMMERCIAL
REAL ESTATE

BROKERAGE • MANAGEMENT • CONSULTING

140 FIRST STREET
BATAVIA, IL
630.761.6589
WWW.BEICRE.COM

3 S RADDANT ROAD RADDANT & BUTTERFIELD AURORA, ILLINOIS



67+ ACRE DEVELOPMENT SITE

- 4 Parcels Available
- Lot is easily Divisible into Multiple Tenants or Purchasers
- Lot is Surrounded By National Retailers Including:
Walmart, Starbucks, McDonalds, Panera, Chicago Premium Outlets, & Many More
- Easy Access to I-88 and Geneva & Aurora Metra Stations
- Located within Batavia Public School District

