



SANTA ANA  
*Diesel*

JOIN:

Harveys  
MBRZ - Pole Fitness Studio  
Burritos La Palma  
Diesel Cafe

EAST ELEVATION



NOW LEASING

FERNANDO CRISANTOS  
Investment Sales | Leasing  
949.558.0312 | f.crisantos@svn.com  
DRE# 01972227

 **SVN**  
VANGUARD  
COMMERCIAL REAL ESTATE ADVISORS





## Area Description

- **Direct access to the CA 5 FWY**
- **1 block from the Santa Ana Train Station & future Street Car Hub.**
- **Close Proximity to DTSA, Courthouse and new existing & developing residential units.**

SANTA ANA  
*Diesel*



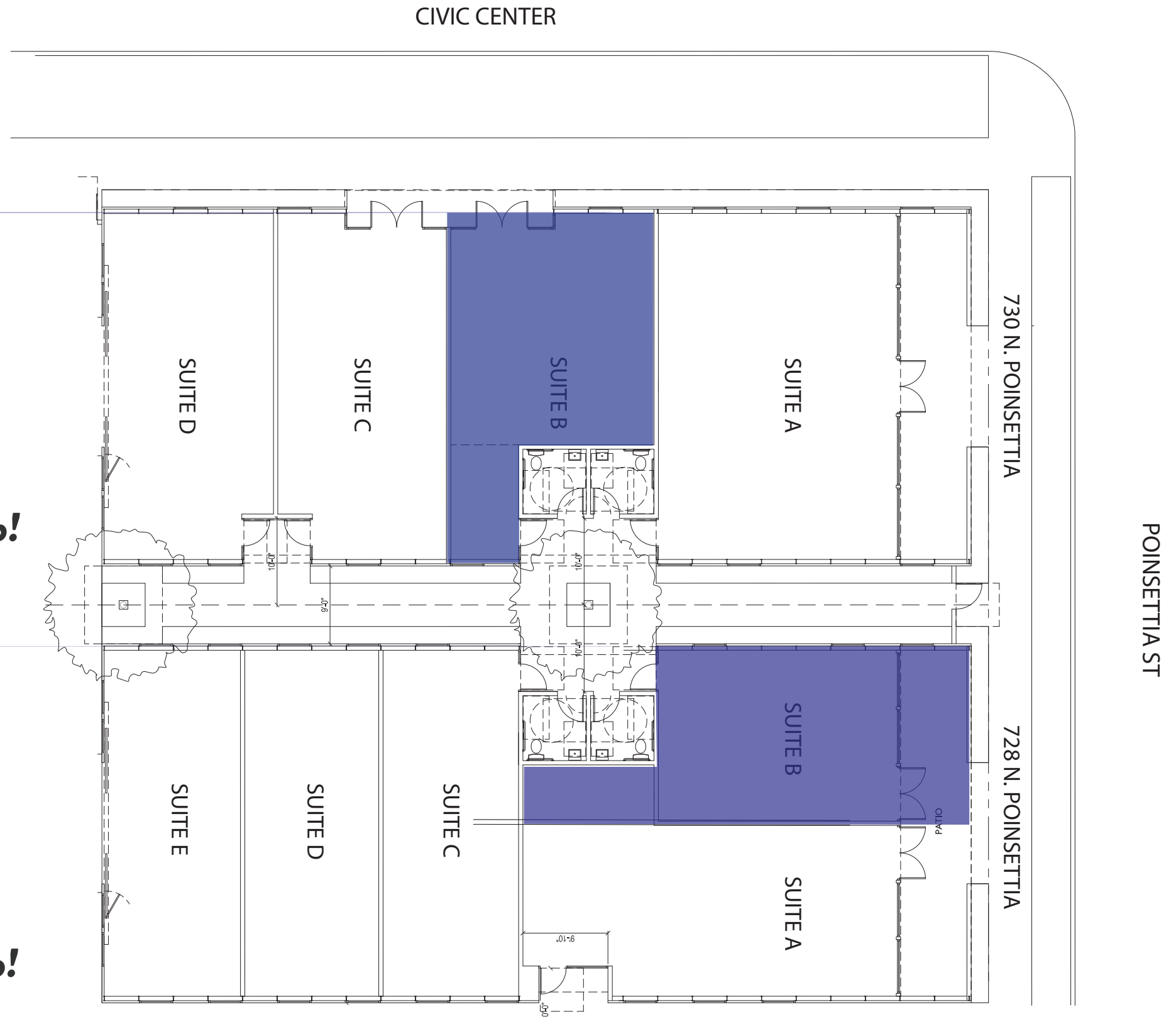
## SPACES AVAILABLE

**730 N. Poinsettia, Unit B**

- **950 SF**
- **Asking rent \$2.35/ SF + \$0.35 C.A.M.**
- **Mezzanine**
- **Front Door and Window Signage**
- **Includes shared restrooms, trash service, grounds maintenance & a shared grease trap!**

**728 N. Poinsettia, Unit B**

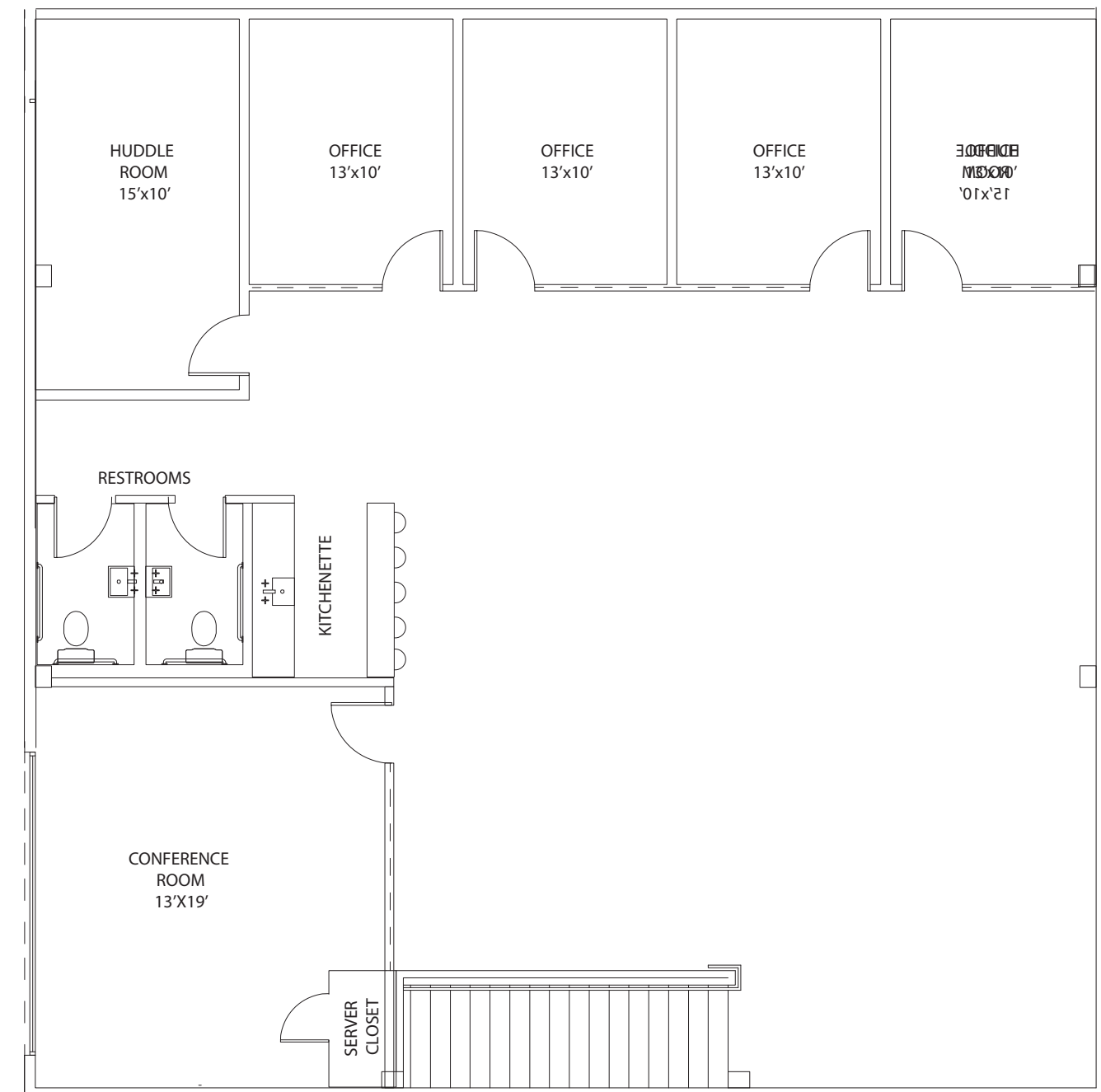
- **900 SF**
- **Asking rent \$2.35/ SF + \$0.35 C.A.M.**
- **Main Entrance Frontage**
- **Front Door and Window Signage**
- **Includes shared restrooms, trash service, grounds maintenance & a shared grease trap!**



# SPACES AVAILABLE

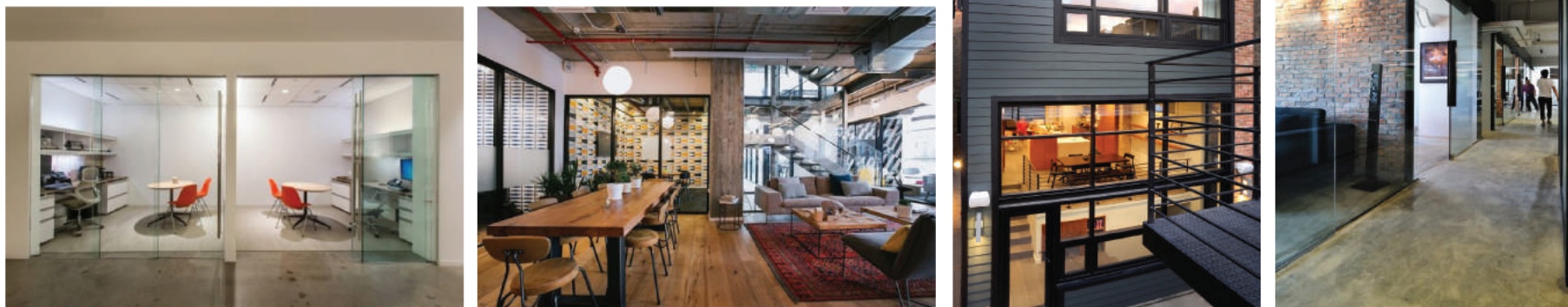
## 724 N. Poinsettia, Suite 2

- **2,500 SF**
- **Asking rent: \$2.50/ SF**
- **2 restrooms**
- **4 private offices with full glass fronts**
- **2 conference rooms with glass fronts & door**
- **Kitchentte with dining bar**
- **Street frontage facade with private entrance**
- **2 dedicated parking spaces**
- **Nearby parking structure and neighborhood street parking**



724 N. POINSETTIA SUITE 2

### MOOD BOARD







FERNANDO CRISANTOS

*Investment Sales | Leasing*

+1 949 558 0312

f.crisantos@svn.com

CA LIC 01972227

©2018 SVN | Vanguard Inc.

NO WARRANTY OR REPRESENTATION, EXPRESS OR IMPLIED, IS MADE TO THE ACCURACY OR COMPLETENESS OF THE INFORMATION CONTAINED HEREIN, AND SAME IS SUBMITTED SUBJECT TO ERRORS, OMISSIONS, CHANGE OF PRICE, RENTAL OR OTHER CONDITIONS, WITHDRAWAL WITHOUT NOTICE, AND TO ANY SPECIAL LISTING CONDITIONS IMPOSED BY THE PROPERTY OWNER(S). AS APPLICABLE, WE MAKE NO REPRESENTATION AS TO THE CONDITION OF THE PROPERTY (OR PROPERTIES) IN QUESTION.