

5600

John F. Kennedy Blvd. W.
WEST NEW YORK, NJ

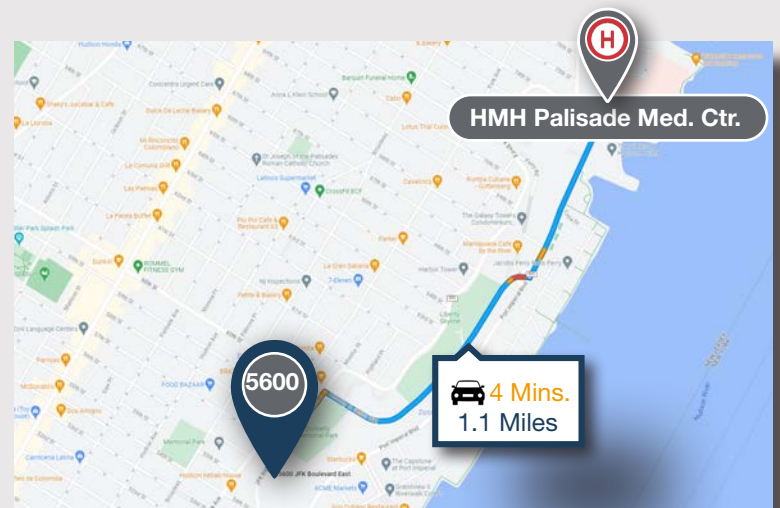
1,000 - 5,850 SF MEDICAL/PROFESSIONAL FOR LEASE



Property Features

- 21,500 SF Medical/Professional building
- 5,850 SF available for lease
- Suite 023: 1,000 SF
- Suite 104: 1,250 SF*
- Suite 107: 2,600 SF*
- Suite 108: 1,000 SF*

**Suites 104, 107 & 108 can be contiguous for 4,850 SF*



Darren M. Lizzack, MSRE
Vice President

201 488 5800 x104
dlizzack@naihanson.com



Randy Horning, MSRE
Vice President

201 488 5800 x123
rhorning@naihanson.com

NAI James E. Hanson

COMMERCIAL REAL ESTATE SERVICES, WORLDWIDE

FOLLOW US!      | NJ Offices: Teterboro | Parsippany | naihanson.com | Member of NAI Global with 325+ Offices Worldwide

SERVICES OFFERED

Brokerage • Property Management • Corporate Services • Financing • Logistics • Government Services • Healthcare • Tenant Representation • Cold Storage • Investment Services

The information contained herein has been obtained from sources considered to be reliable, but no guarantee of its accuracy is made by NAI James E. Hanson

5600

John F. Kennedy Blvd. W. WEST NEW YORK, NJ

LOCATION INFORMATION



Demographics	1 Mile	3 Mile	5 Mile
Population	94,911	789,130	2,037,518
Average House -Hold Income	\$77,336	\$153,663	\$135,128
Average Age of Householder	37.6	40.7	38.8

Excellent Location

- 94% walking score and close to hospitals
- Close proximity to highways, public transportation, eateries and shopping
- 2.2 miles to Lincoln Tunnel
- 3.5 miles to New York City
- 5.8 miles to Holland Tunnel

Surrounding Hospitals

- HMH Palisades Medical Center (1 mile)
- Christ Hospital (4.5 miles)
- Hudson Regional Hospital (5.5 miles)
- St. Mary's General Hospital (11 miles)
- St. Michael's Medical Center (15.2 miles)

5600

John F. Kennedy Blvd. W.
WEST NEW YORK, NJ

FLOOR PLAN 1ST FLOOR

Suite 104
1,250 SF

Suite 108
1,000 SF

Suite 107
2,600 SF



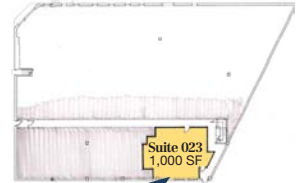
5600

John F. Kennedy Blvd. W.
WEST NEW YORK, NJ

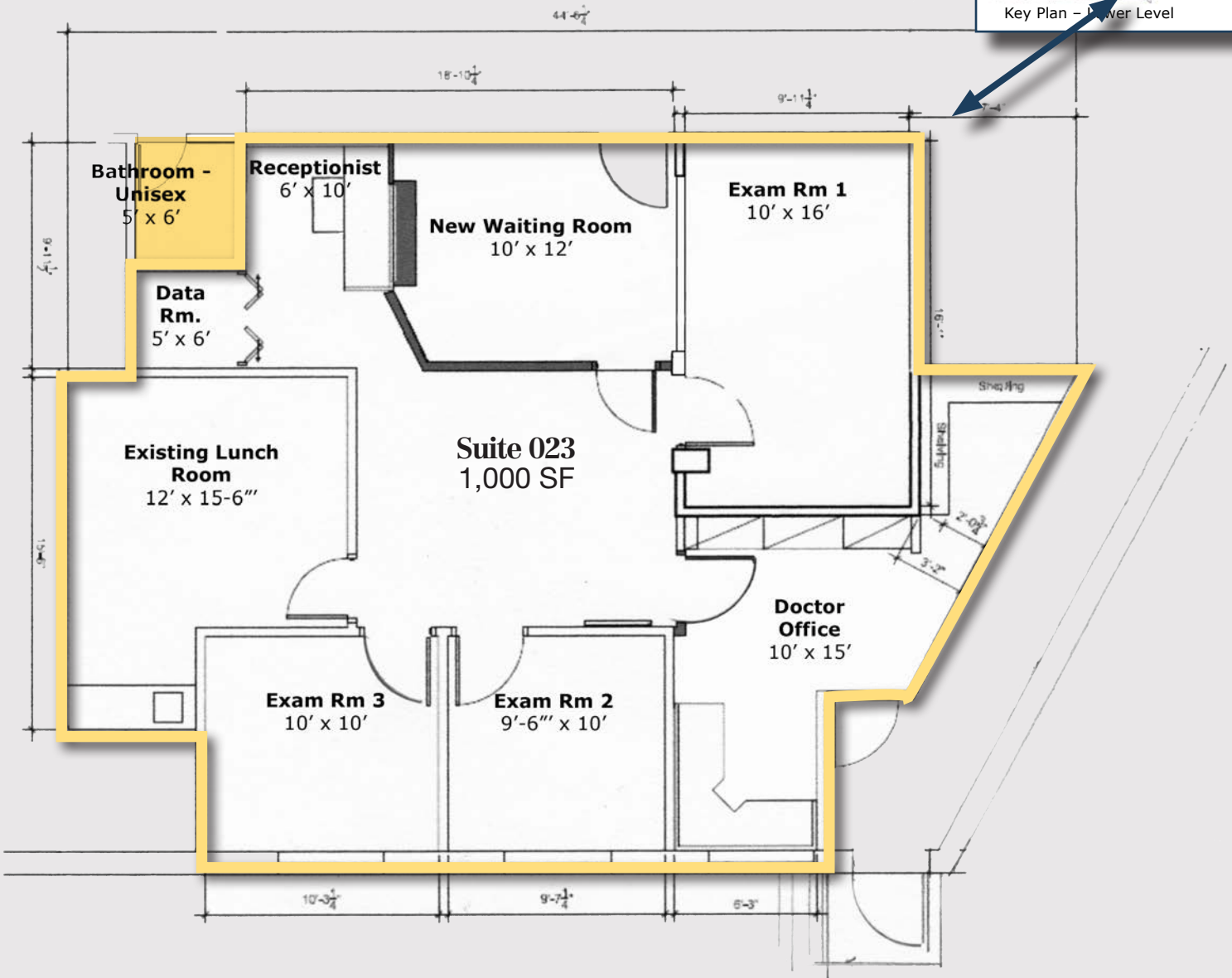
FLOOR PLAN LOWER LEVEL



Aerial View - Parking Lot Side



Key Plan - Lower Level



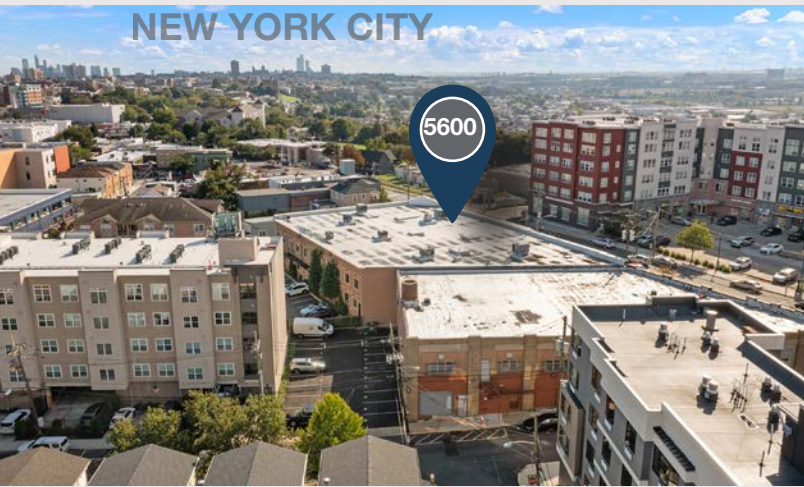
5600

John F. Kennedy Blvd. W.
WEST NEW YORK, NJ

PROPERTY PHOTOS



NEW YORK CITY



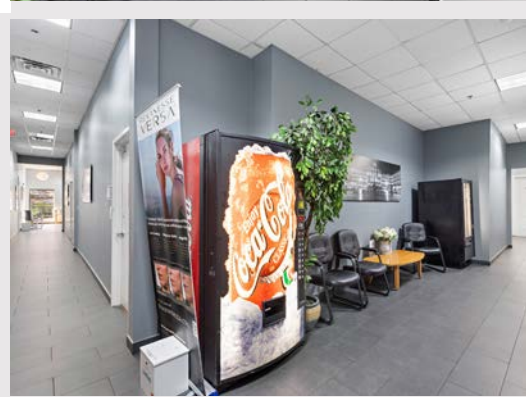
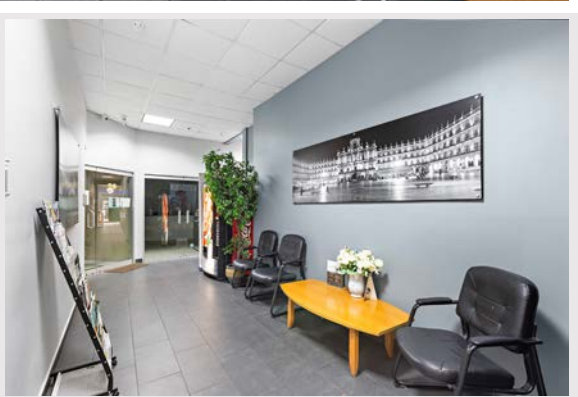
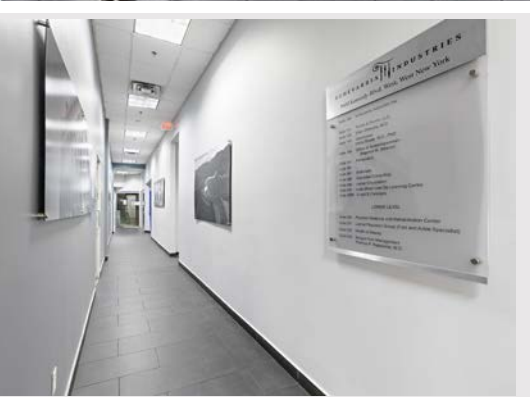
NAI James E. Hanson

The information contained herein has been obtained from sources considered to be reliable, but no guarantee of its accuracy is made by NAI James E. Hanson.

5600

John F. Kennedy Blvd. W.
WEST NEW YORK, NJ

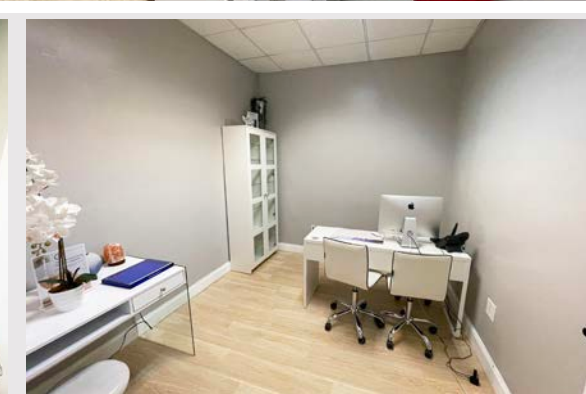
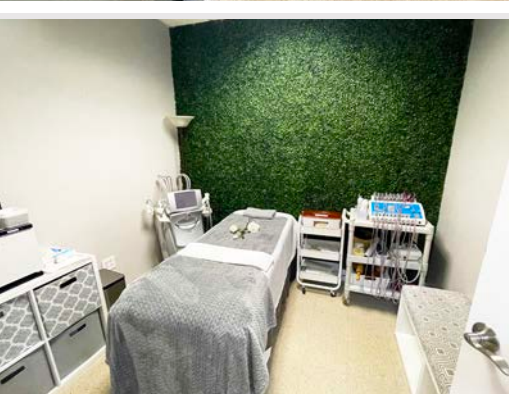
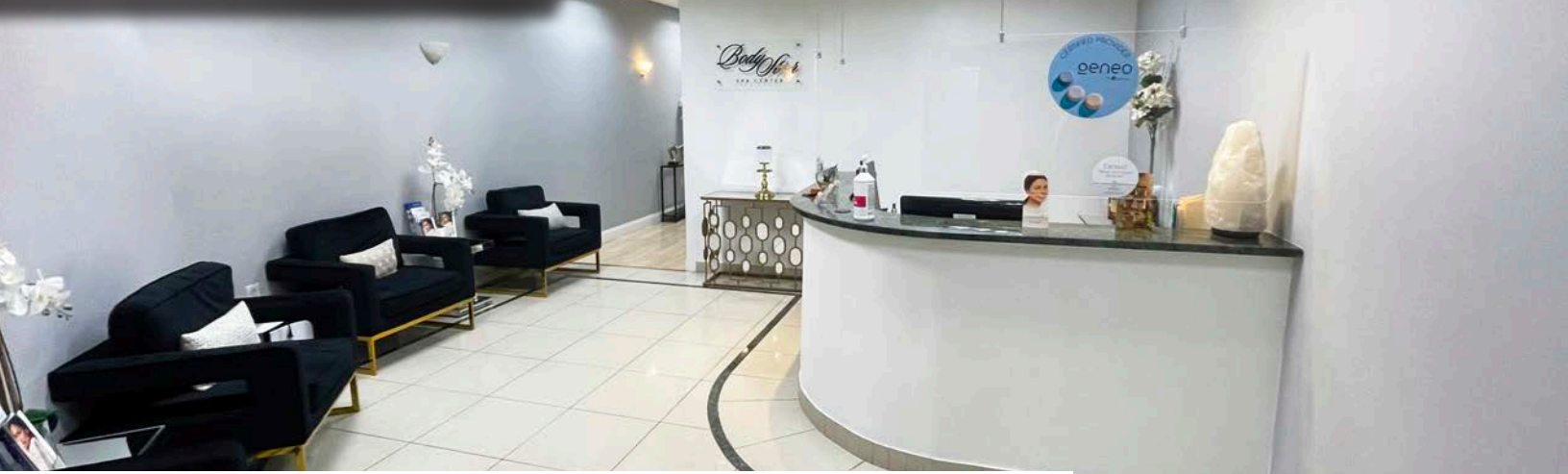
PROPERTY PHOTOS



5600

John F. Kennedy Blvd. W.
WEST NEW YORK, NJ

PROPERTY PHOTOS



5600

John F. Kennedy Blvd. W.
WEST NEW YORK, NJ

1,000 SF - 5,850 SF
MEDICAL/PROFESSIONAL FOR LEASE

Darren M. Lizzack, MSRE
Vice President
201 488 5800 x104
dlizzack@naihanson.com



Randy Horning, MSRE
Vice President
201 488 5800 x123
rhorning@naihanson.com