



REAL ESTATE COMPANY

INDUSTRIAL | OFFICE | COMMERCIAL
BROKERAGE & DEVELOPMENT
ESTABLISHED 1950

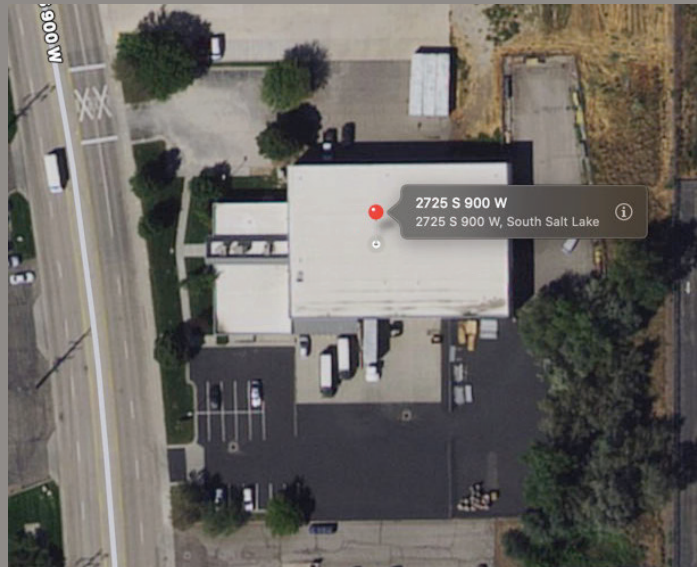
2725 SOUTH 900 WEST STREET SALT LAKE CITY, UT

19,459 SF FOR LEASE OFFICE AND WAREHOUSE BUILDING



FEATURES

- One 14' x 12' truck door
- Two 8'6" x 9' truck door with pit leveler
- One 8'6" x 9' van high loading dock
- Column Spacing - 36'x33'
- Wet Fire Sprinkler System
- Available 6/1/2026
- Lease rate: \$10.95 SF NNN



THE BARNEY BUILDING
2000 SHAWNEE MISSION PARKWAY
SUITE 400
MISSION WOODS, KS 66205

816.221.4488
816.221.4494

KARBANK.COM

Information furnished regarding property is from sources deemed reliable but no warranty or representation is made as to the accuracy thereof and same is submitted subject to errors, omissions, prior sale or lease or withdrawal without notice.