

Landmark Centre

5460 S. Quebec St.

Greenwood Village.CO 80111

FOR LEASE

\$24.00/SF FSG

Spec Suites Available



Property Overview

- Spec suites available with nice modern finishes
- Elevators to covered parking
- Easy access to I-25 at Bellevue & Orchard
- Fitness center with showers and lockers
- Adjacent to Village Shops at The Landmark
- Multiple amenities nearby, including restaurants, retail and coffee shops
- Close to walking trails and Greenwood Athletic Club
- Visitor parking

Property Facts

| | |
|--|------------------------|
| Bldg Size | 75,400 SF |
| Available | 1,668-10,197 SF |
| Parking | 3.5/1,000 |
| Covered Parking | \$75/month |
| Surface Parking Available as Well | Free |



NAIShames Makovsky

Ana Sandomire

303 565 3029

asandomire@shamesmakovsky.com

Peter Knisely

720 881 7534

pknisely@shamesmakovsky.com





Landmark Centre

5460 S. Quebec St.

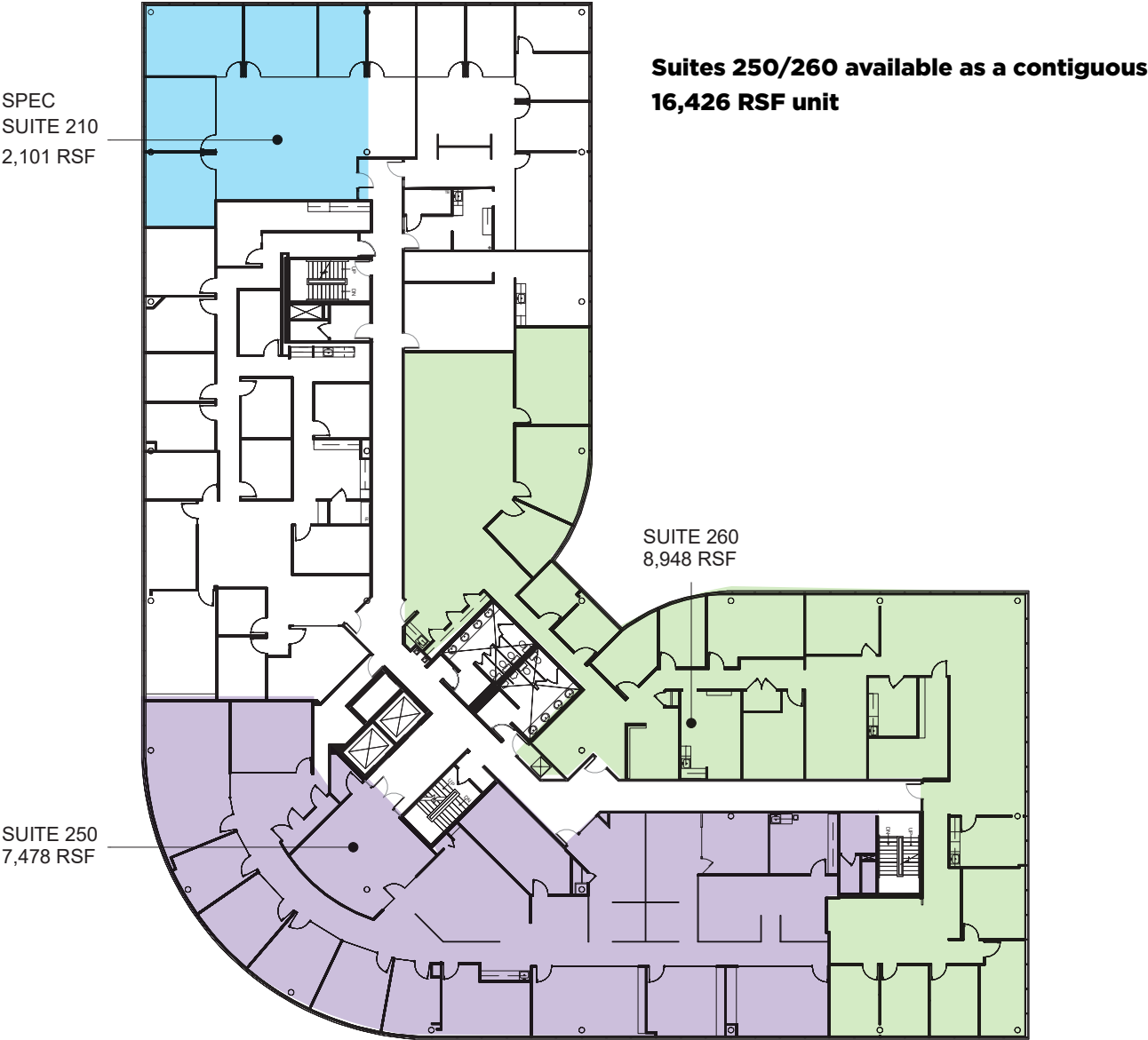
FIRST FLOOR



Landmark Centre

5460 S. Quebec St.

SECOND FLOOR



Landmark Centre

5460 S. Quebec St.

THIRD FLOOR



Nearby Amenities

within 1 Mile:

1

THE LANDMARK



coffeeshop

2

BELLEVUE PROMENADE



3

VILLAGE PLAZA



4

BELLEVUE STATION



Ana Sandomire

303 565 3029

asandomire@shamesmakovsky.com

Peter Knisely

720 881 7534

pknisely@shamesmakovsky.com

NAIShames Makovsky

NO WARRANTY OR REPRESENTATION, EXPRESS OR IMPLIED, IS MADE AS TO THE ACCURACY OF THE INFORMATION CONTAINED HEREIN, AND THE SAME IS SUBMITTED SUBJECT TO ERRORS, OMISSIONS, CHANGE OF PRICE, RENTAL OR OTHER CONDITIONS, PRIOR SALE, LEASE OR FINANCING, OR WITHDRAWAL WITHOUT NOTICE, AND OF ANY SPECIAL LISTING CONDITIONS IMPOSED BY OUR PRINCIPALS NO WARRANTIES OR REPRESENTATIONS ARE MADE AS TO THE CONDITION OF THE PROPERTY OR ANY HAZARDS CONTAINED THEREIN ARE ANY TO BE IMPLIED.