

FOR LEASE

3699 Park Blvd

San Diego, CA 92103

HIGH-VISIBILITY CORNER LOCATION ON THE HILLCREST / NORTH PARK BORDER



SOUTH COAST
COMMERCIAL

CORFAC
INTERNATIONAL



PARK BLVD

CONTACT

Travis Jaedtke, VICE PRESIDENT

619.995.5526 DRE# 01930945 Jaedtke@scc1031.com

www.scc1031.com

PROPERTY HIGHLIGHTS



±2,100 SF Available at 3699 Park Blvd

Flexible commercial space suitable
for a variety of uses.



Minutes from Balboa Park and the San Diego Zoo

Highly accessible location
near major city attractions.



Hillcrest/North Park Border

Situated between two vibrant and well-
established neighborhoods.



High Traffic Exposure: 14,000+ Cars Per Day

Consistent traffic flow provides
strong daily visibility.



Potential Off-Street Parking Opportunities

Added convenience for
customers and staff.



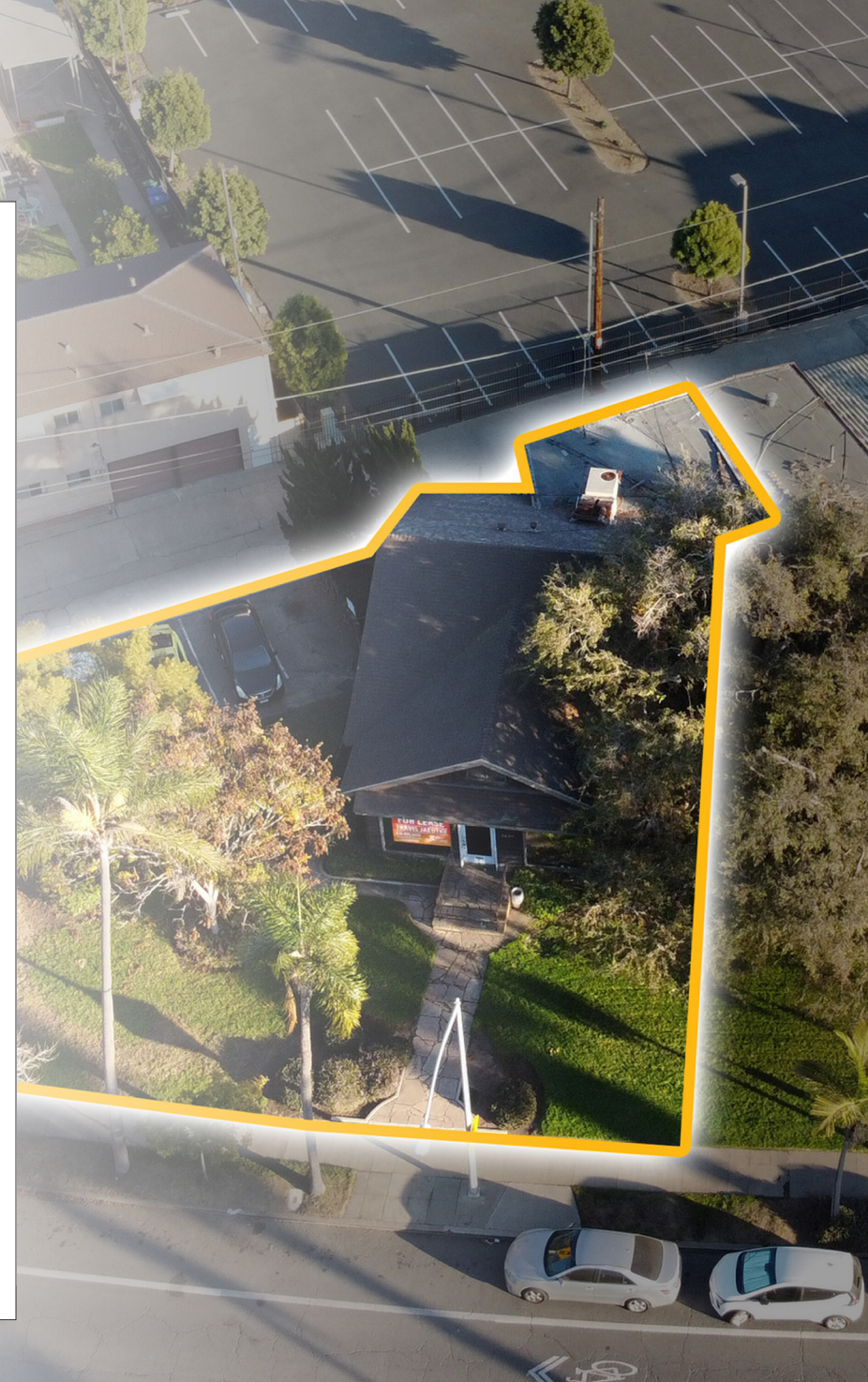
Exceptional Frontage Along Park Blvd

Excellent visibility and signage
opportunities.

EXTERIOR PHOTO



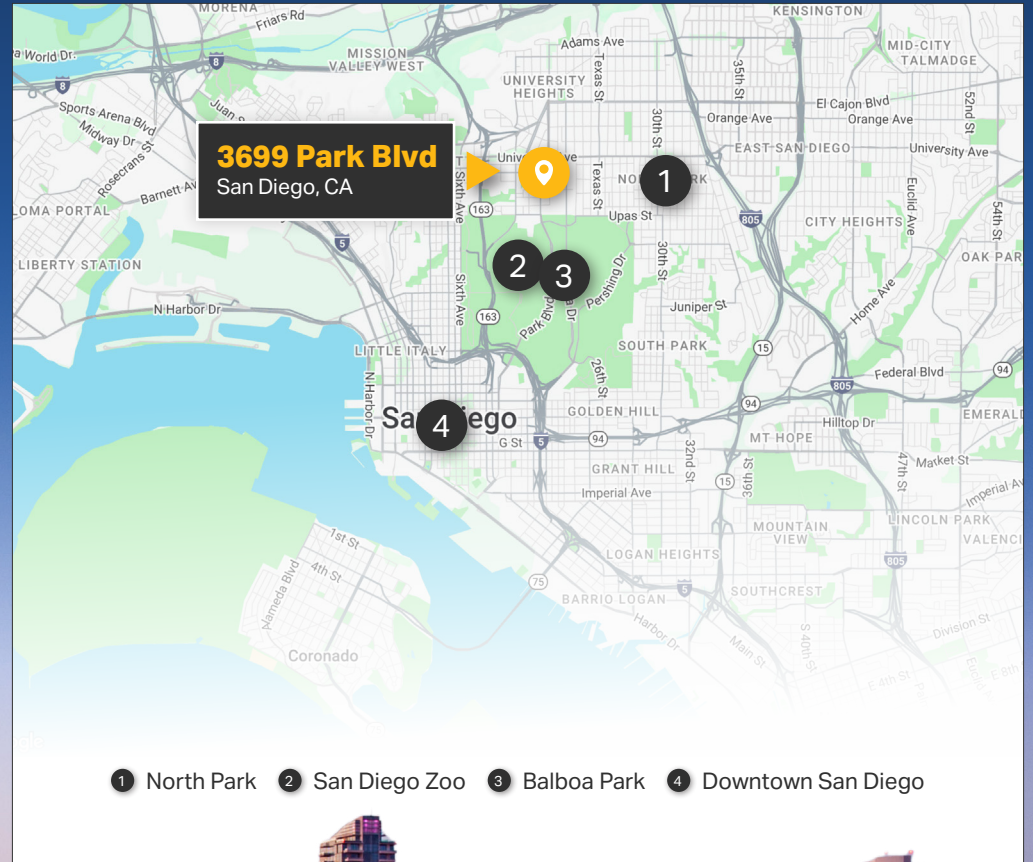
FLOOR PLAN



LOCATION INFORMATION

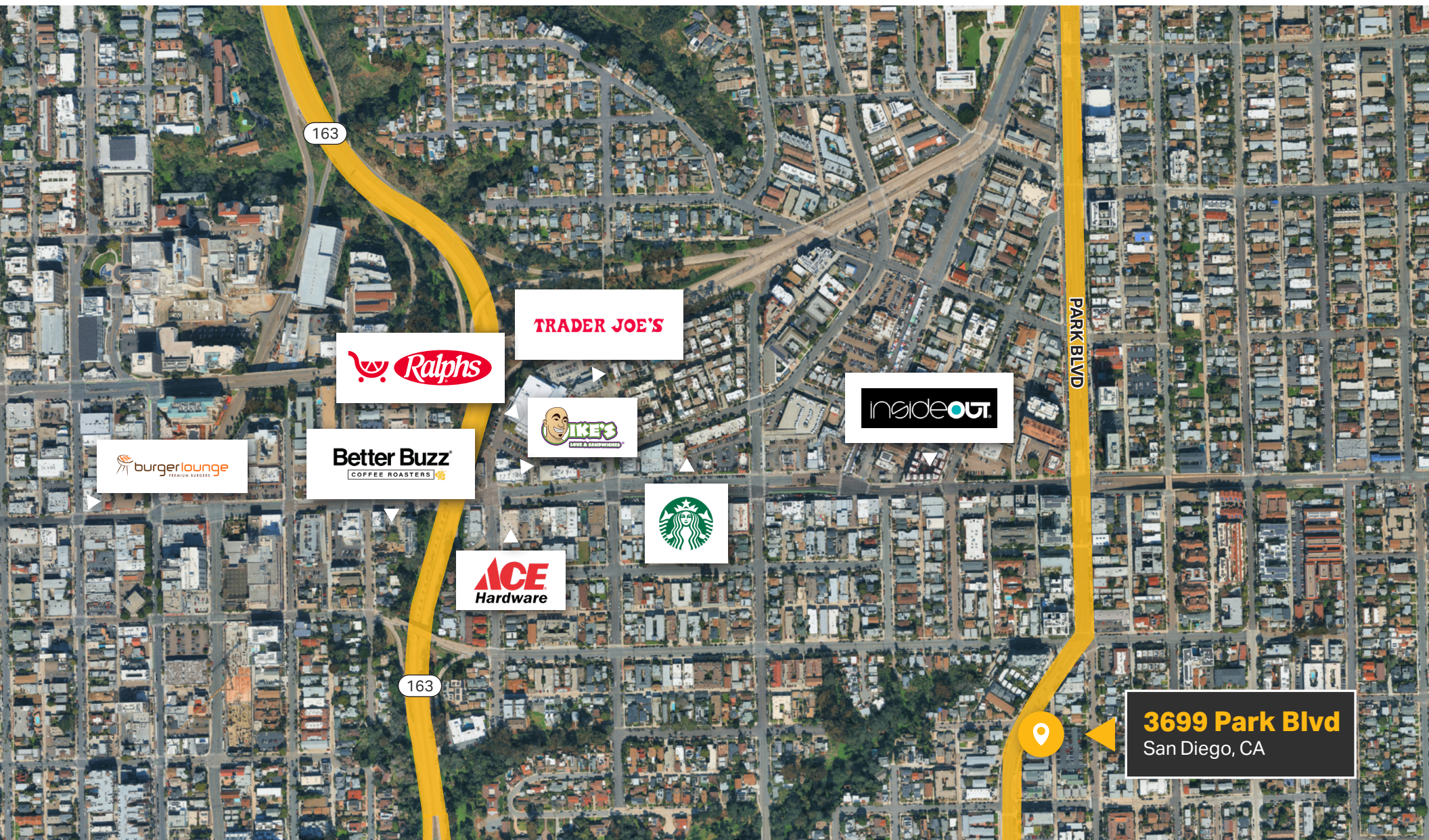
NORTH PARK

Discover North Park, the dynamic neighborhood surrounding the property at 3699 Park Blvd, San Diego, CA, 92103. This sought-after location offers a vibrant mix of amenities and attractions, including the renowned Balboa Park, North Park's eclectic dining and shopping scene, and a thriving arts and cultural community. With proximity to major freeways, the bustling downtown district is just minutes away, providing easy access to a wide array of business and entertainment opportunities. Surround yourself with the energy and potential of San Diego's urban landscape at this exceptional lease opportunity.

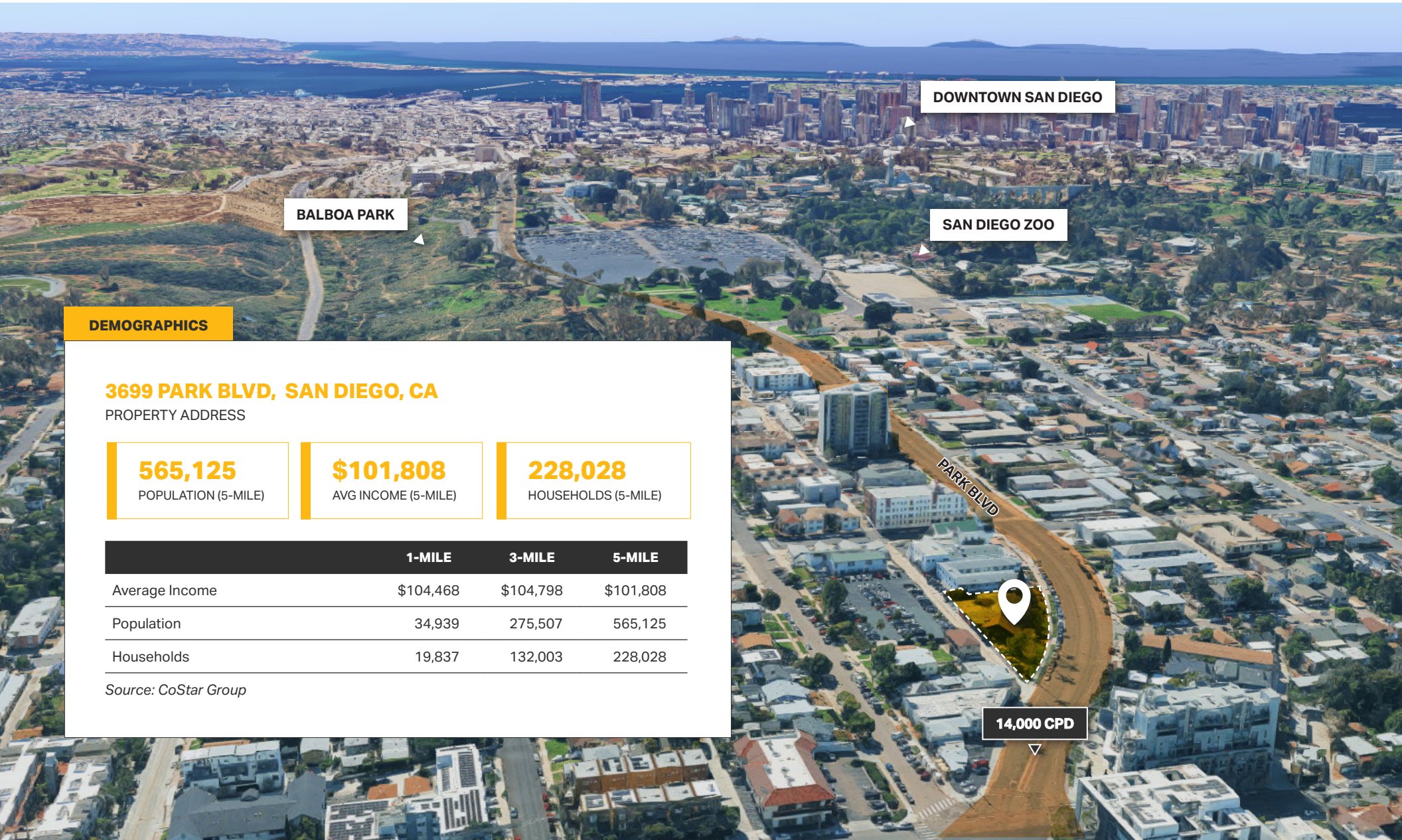


- ① North Park ② San Diego Zoo ③ Balboa Park ④ Downtown San Diego

POINT OF INTEREST



DEMOGRAPHICS



3699 Park Blvd

San Diego, CA 92103

CONTACT

Travis Jaedtke, VICE PRESIDENT

619.995.5526
DRE# 01930945
Jaedtke@scc1031.com



SOUTH COAST
COMMERCIAL

CORFAC
INTERNATIONAL

www.scc1031.com