



MEDICAL
OFFICE
SPACE FOR SUBLEASE

1 ELIZABETH PLACE, DAYTON, OHIO 45417

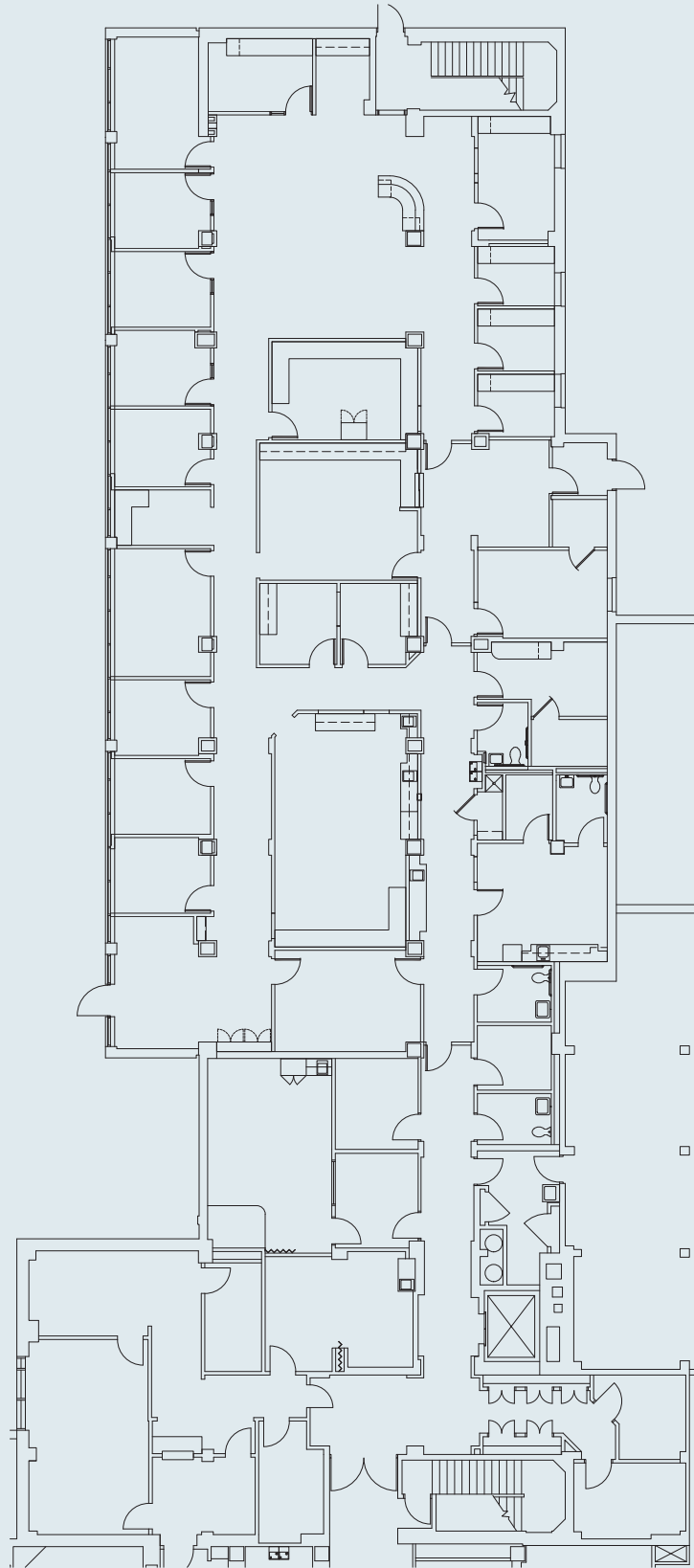


KEY FEATURES

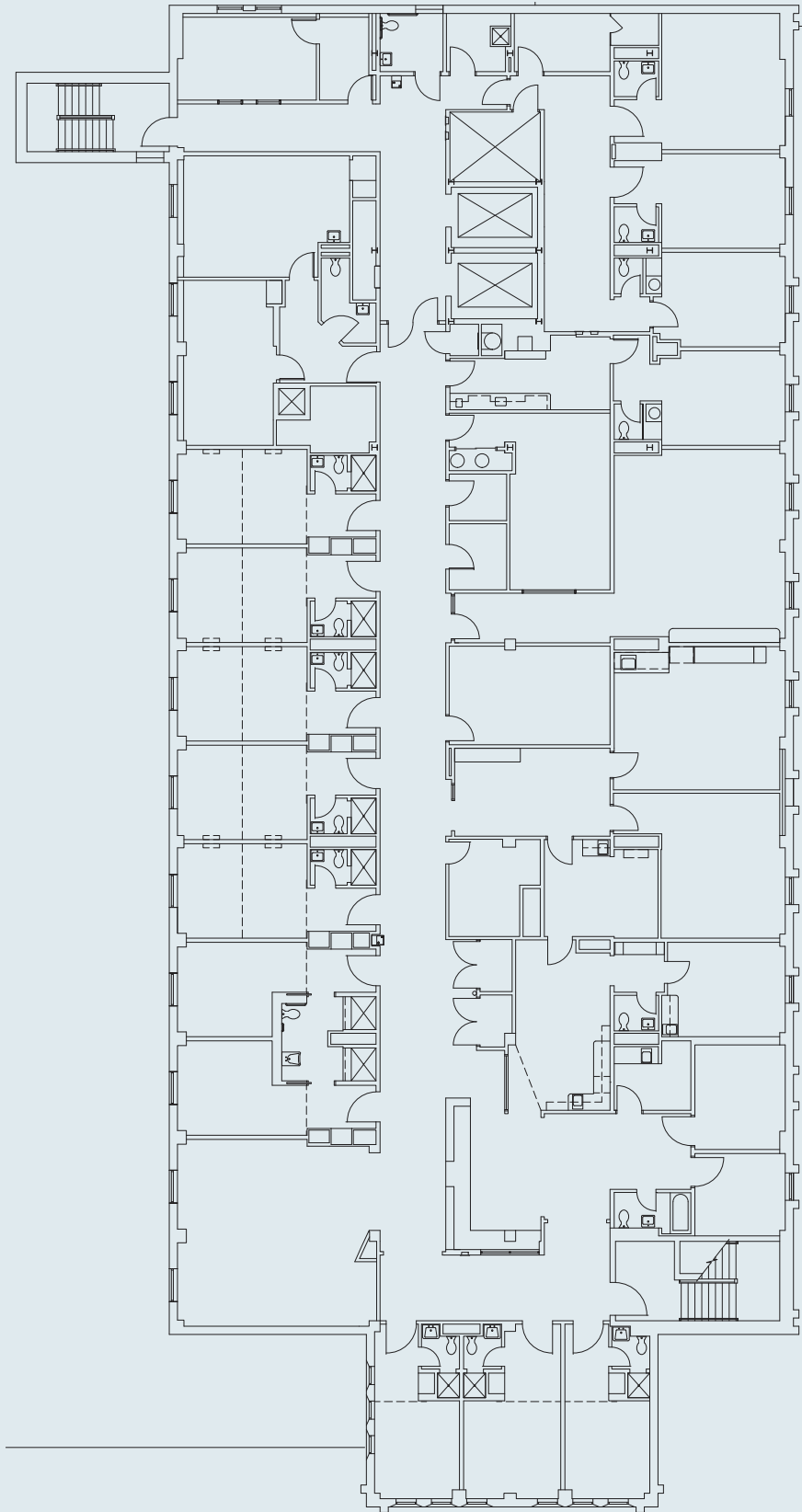
- ➔ Existing furniture available
- ➔ Dedicated reserved parking spaces available
- ➔ High end exterior and interior finishes
- ➔ Monument signage available
- ➔ Master lease expires March 31, 2031
- ➔ On-site covered patient drop off/pick up areas, property management, and back up generator
- ➔ Situated in prominent location situated near the University of Dayton, Miami Valley Hospital, and four other major hospitals within a 3.5 mile radius



1ST FLOOR - 6,600 RSF



5TH FLOOR - 11,100 RSF





Jacob Stammen
(513) 278-8242
jacob@sqftcommercial.com



(Inquiries Only)
DAVID HERBERT
(347) 237-6627
david.herbert@avisonyoung.com