

7471 TYLER BOULEVARD

MENTOR, OH

**FOR
LEASE**



ANDREWS
MANAGEMENT

CONTACT

ALEX ANDREWS

Tel. +(440) 942 - 5805

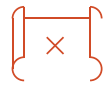
alex@andrewsmanagement.com



7471 TYLER BOULEVARD MENTOR, OH

LOCATION SUMMARY

Located on the heavily trafficked Tyler Boulevard industrial business district and minutes from Route 2, Interstate 90, and Mentor Avenue. Closer proximity to Great Lakes Mall and neighboring businesses.



FLOOR PLAN

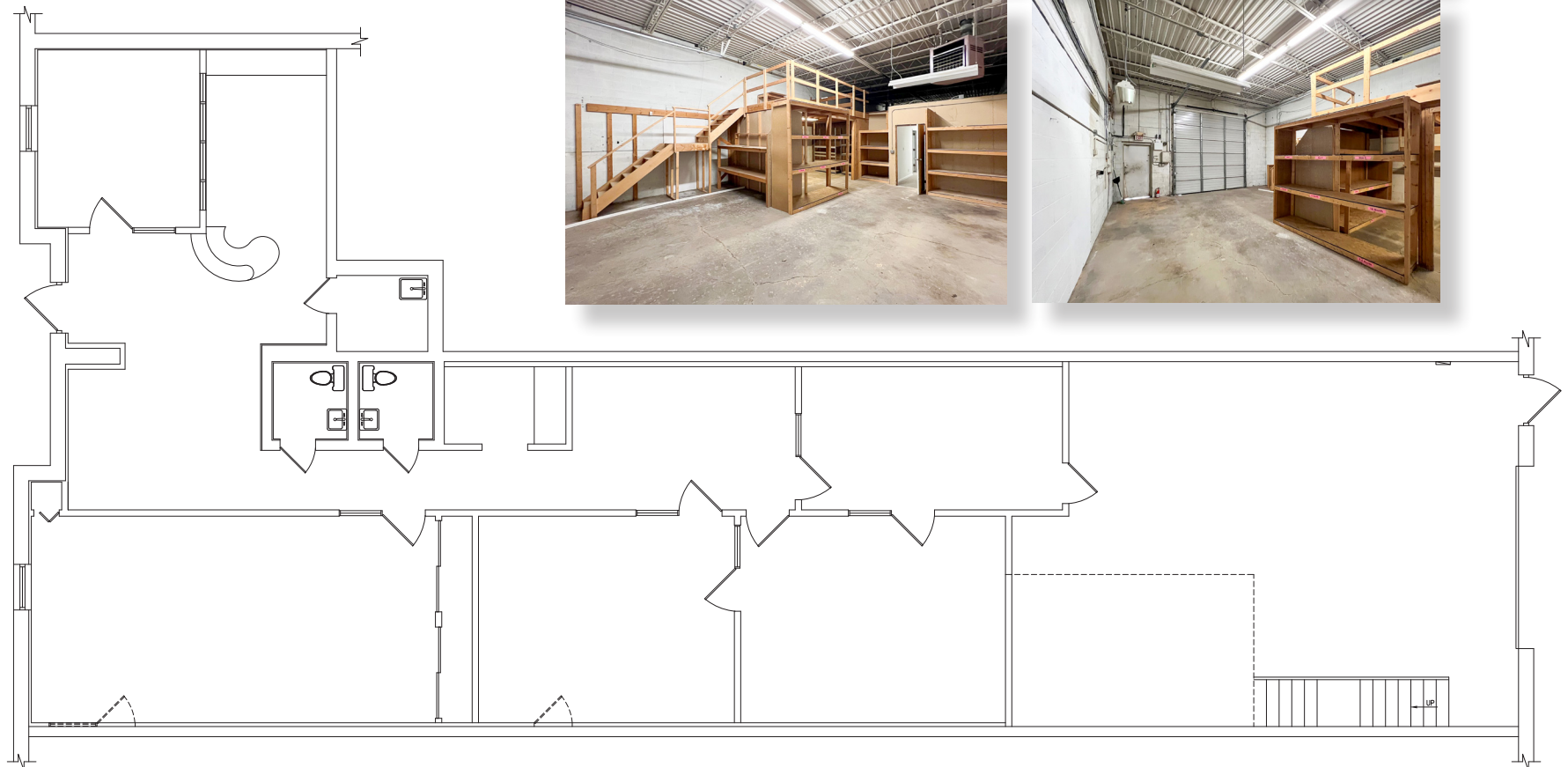
Unit C - Available 3,000 SF

CONTACT

ALEX ANDREWS

Tel. +(440) 942 - 5805

alex@andrewsmanagement.com



FOR LEASE

7471 TYLER BOULEVARD
MENTOR, OH

CONTACT
ALEX ANDREWS

Tel. +(440) 942 – 5805
alex@andrewsmanagement.com



- **Recently Upgraded West Parking Lot (Aug 2025)** – Provides convenient, modern, and well-maintained parking for tenants and visitors
- **New Concrete Pad Installed (2024)** – Enhances loading/unloading areas and overall site accessibility.
- **Ample On-Site Parking** – Supports both employees and customers with ease of access throughout the premises.
- **Truck-Friendly Access** – Turnaround space and loading zones accommodate semi-trucks efficiently.
- **Versatile Industrial Building** – Suitable for a variety of tenants with a strong existing tenant mix and located in a thriving industrial corridor.
- **Prime Location** – Minutes from both I-90 and Route 2, offering excellent regional connectivity.



ANDREWS
MANAGEMENT