

MEDICAL OFFICE SPACE CURRENTLY FOR LEASE

2240 COLISEUM DRIVE, SUITE D
HAMPTON,VA



The information contained herein has been obtained from sources deemed to be reliable but is not warranted.
This offer subject to errors and omissions, or withdrawal, without notice

FOR MORE INFORMATION:

Tom Waltz

Campana Waltz Commercial Real Estate, LLC - EAST

11832 Fishing Point Dr., Suite 400, Newport News, VA 23606

 (757) 231-5516  Tom@CampanaWaltz.com

757-231-5516

CAMPANA
Waltz
COMMERCIAL REAL ESTATE LLC - EAST

AVAILABLE

INFORMATION

ABOUT THIS PROPERTY:

The property is an attractive single story medical/office building with two (2) contiguous suites. It is located in the heart of Coliseum Central in Hampton, VA next to the Sentara Careplex. Each suite has exam rooms, lab, and employee break room. Both Suites are ideal for a medical practice or can be modified for general office use. (See floor plans)

SQUARE FOOTAGE:

Suite D - 2, 295 SF - Available Now

LEASE RATE:

\$19.50 per square foot

- Landlord pays base year real estate taxes and insurance

PARKING:

Ample

ZONING:

C-1 Commercial

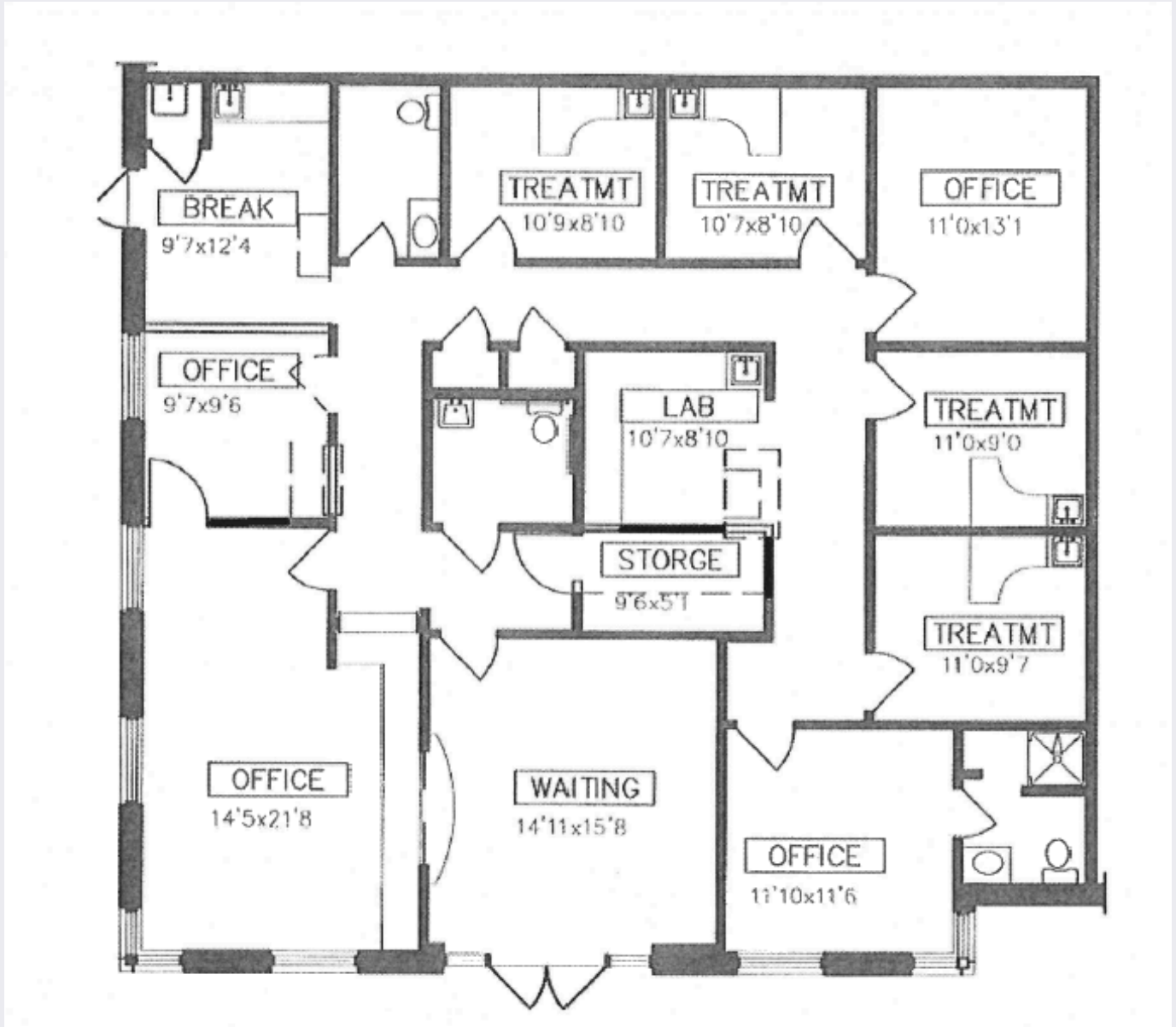
- <https://www.municode.com/webcontent/14728/Table-3-2A.pdf>

GENERAL INFORMATION:

- Adjacent to Senta Careplex
- Easy access to Hampton Roads East/West Expressway and I - 64
- Well established Coliseum Central area
- Surrounded by numerous retailers and solid residential neighborhoods

FLOOR PLANS

Suite D

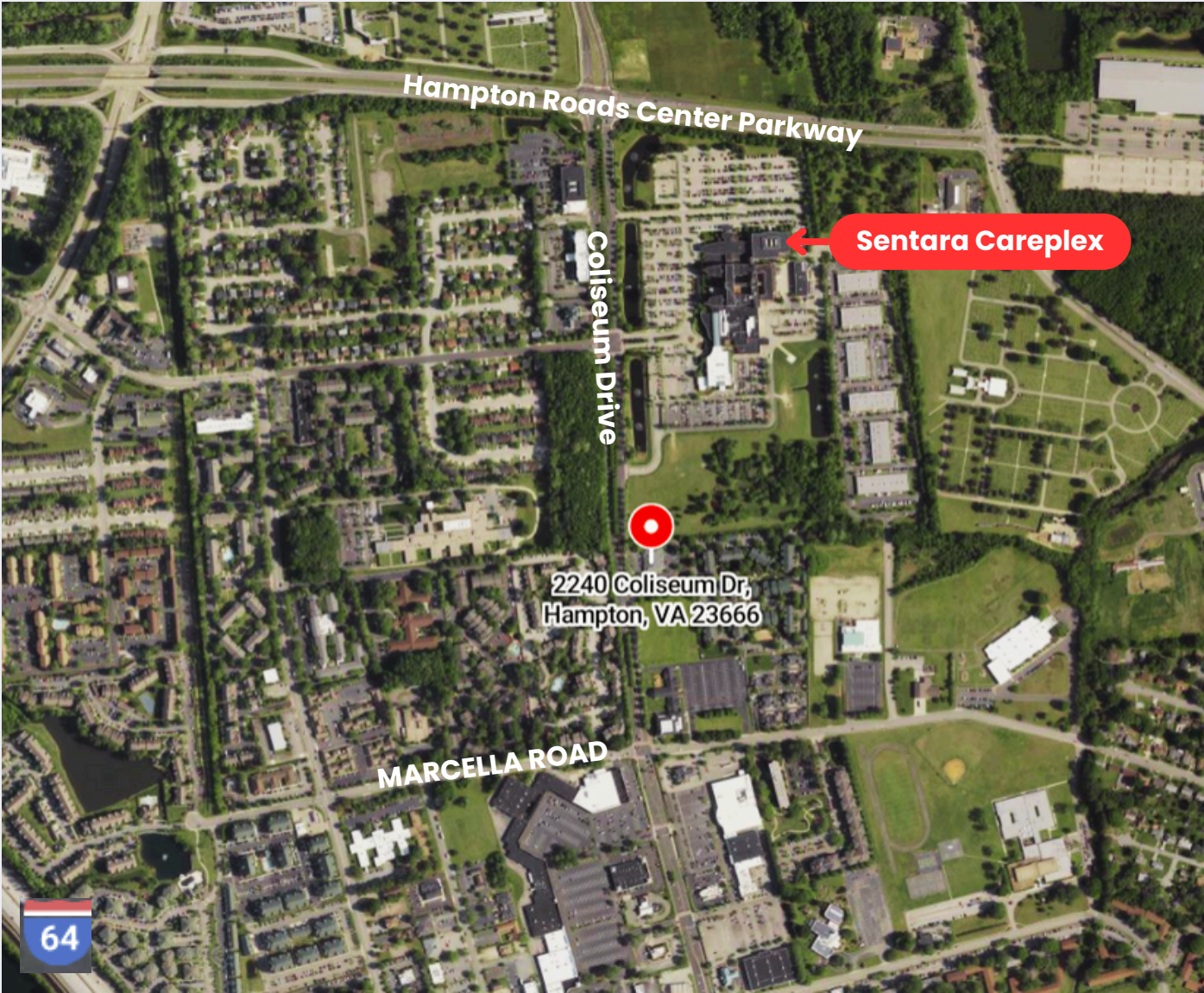


INTERIOR PHOTOS



The information contained herein has been obtained from sources deemed to be reliable but is not warranted. This offer subject to errors and omissions, or withdrawal, without notice

AERIAL MAP



The information contained herein has been obtained from sources deemed to be reliable but is not warranted. This offer subject to errors and omissions, or withdrawal, without notice