

INDUSTRIAL PORTFOLIO FOR SALE

KPA
COMMERCIAL

880 & 894 N. 10TH STREET, SAN JOSE, CA



880 N. 10th Street

- Building Size: +2,500 SF | Lot Size: +5,734 SF
- APN: 249-08-012
- Zoning: LI – Light Industrial, General Plan – Mixed Use Neighborhood
- Single Tenant Industrial Building
- Fenced Yard
- 1 Grade Level Roll Up Door
- Easy Access to Highway 101/280/87/SJC
- Portfolio sale preferred
- Reduced Price: \$1,175,000



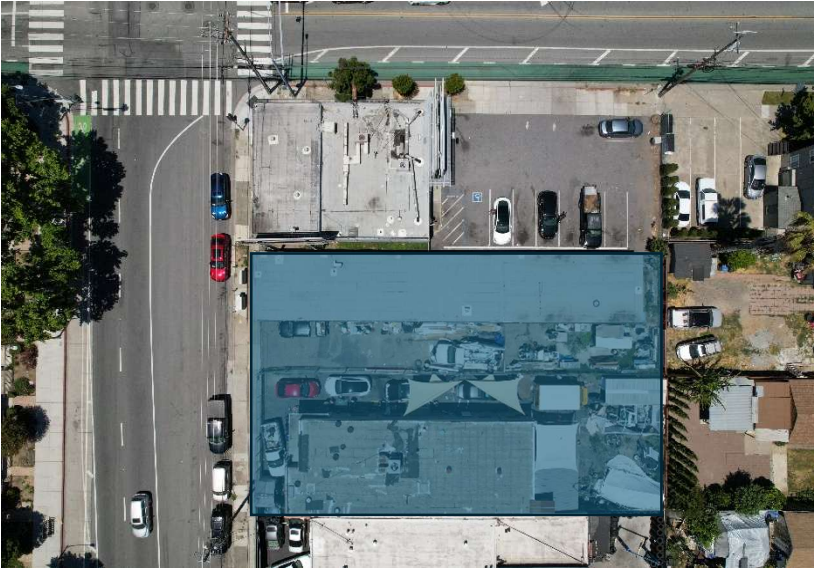
894 N. 10th Street

- Building Size: +2,900 SF | Lot Size: +5,934 SF
- APN: 249-08-013
- Zoning: LI – Light Industrial, General Plan – Mixed Use Neighborhood
- Multi-Tenant Industrial Building
- 3 Units (Each Unit Has a Restroom & One Grade Level Roll Up Door)
- Fenced Yard
- Reduced Price: \$1,200,000

Kevin Peixoto
KPA Commercial, Inc.
408.898.0177
CalDRE No. 01411086
kevin@kpacommercial.com

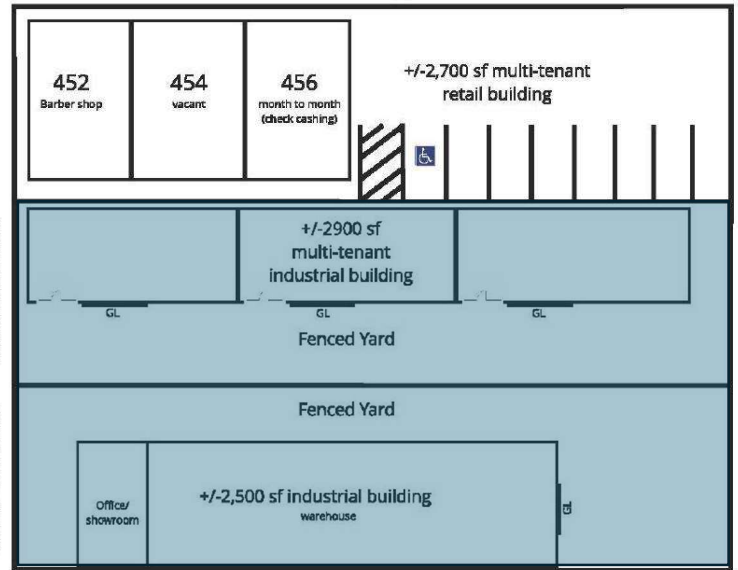
KPACOMMERCIAL.COM

The information contained herein was obtained from sources believed reliable; however, KPA Commercial, Inc. and its agents make no guarantee, warranty or representation, either expressed or implied, as the completeness or accuracy thereof. The presentation of this property is submitted subject to errors, omissions, change of price, statements of income and expenses or conditions prior to sale or lease, or withdrawal without notice. Prospective Tenants and Buyers should consult their accountant, legal counsel or other professional advisor.



E. HEDDING STREET

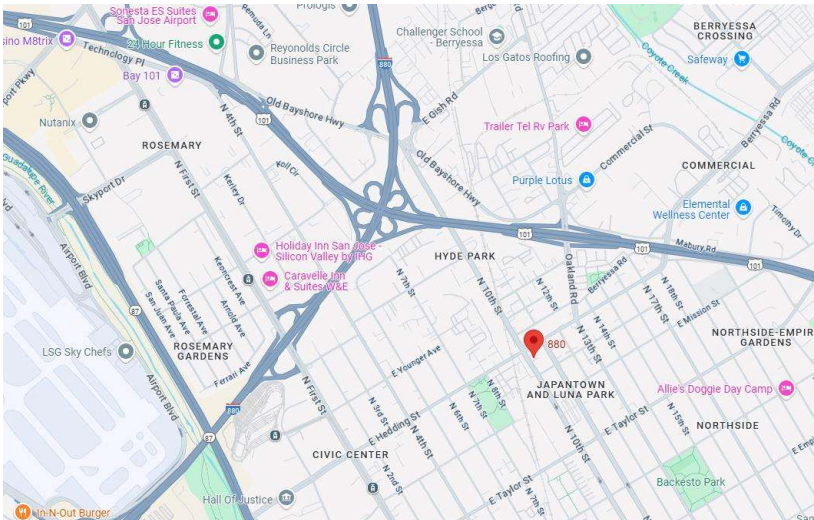
456 E. Hedding Street



N. 10TH STREET

894 N. 10th Street

880 N. 10th Street



The information contained herein was obtained from sources believed reliable; however, KPA Commercial, Inc. and its agents make no guarantee, warranty or representation, either expressed or implied, as the completeness or accuracy thereof. The presentation of this property is submitted subject to errors, omissions, change of price, statements of income and expenses or conditions prior to sale or lease, or withdrawal without notice. Prospective Tenants and Buyers should consult their accountant, legal counsel or other professional advisor.

