

**APPENDIX B  
2018 BUILDING CODE SUMMARY  
FOR ALL COMMERCIAL BUILDINGS**

Address: 6138 CAROLINA BEACH ROAD, WILMINGTON, NC 28405  
 Project Name: HABITAT RE-STORE  
 Owner: WILMINGTON OFFICE  
 Architect: HOOD HERRING ARCHITECTURE PLLP  
 Date: 10/28/21

**GENERAL NOTES:**  
 1. Provide fire alarm system in accordance with NFPA 72.  
 2. Provide fire alarm system in accordance with NFPA 72.  
 3. Provide fire alarm system in accordance with NFPA 72.  
 4. Provide fire alarm system in accordance with NFPA 72.  
 5. Provide fire alarm system in accordance with NFPA 72.

**APPROVALS**

**PERCENTAGE OF WALL GROUND CALCULATIONS**

Foundation Type	Area (sq ft)	Perimeter (ft)	Volume (cu ft)
Foundation 1	1000	100	10000
Foundation 2	2000	200	20000
Foundation 3	3000	300	30000
<b>TOTAL</b>	<b>6000</b>	<b>600</b>	<b>60000</b>

**FOUNDATION REQUIREMENTS**

Foundation 1:  12" x 12" x 12"  12" x 12" x 12"  12" x 12" x 12"

Foundation 2:  12" x 12" x 12"  12" x 12" x 12"  12" x 12" x 12"

Foundation 3:  12" x 12" x 12"  12" x 12" x 12"  12" x 12" x 12"

**APPROVALS**

**APPROVALS**

Professional Engineer: \_\_\_\_\_  
 Professional Architect: \_\_\_\_\_  
 Professional Fire Marshal: \_\_\_\_\_

**APPROVALS**

Professional Engineer: \_\_\_\_\_  
 Professional Architect: \_\_\_\_\_  
 Professional Fire Marshal: \_\_\_\_\_

**STRUCTURAL DESIGN**

**STRUCTURAL DESIGN**

Foundation Type:  12" x 12" x 12"  12" x 12" x 12"  12" x 12" x 12"

Foundation 1:  12" x 12" x 12"  12" x 12" x 12"  12" x 12" x 12"

Foundation 2:  12" x 12" x 12"  12" x 12" x 12"  12" x 12" x 12"

Foundation 3:  12" x 12" x 12"  12" x 12" x 12"  12" x 12" x 12"

**MECHANICAL DESIGN**

**MECHANICAL DESIGN**

Foundation Type:  12" x 12" x 12"  12" x 12" x 12"  12" x 12" x 12"

Foundation 1:  12" x 12" x 12"  12" x 12" x 12"  12" x 12" x 12"

Foundation 2:  12" x 12" x 12"  12" x 12" x 12"  12" x 12" x 12"

Foundation 3:  12" x 12" x 12"  12" x 12" x 12"  12" x 12" x 12"

**ELECTRICAL DESIGN**

**ELECTRICAL DESIGN**

Foundation Type:  12" x 12" x 12"  12" x 12" x 12"  12" x 12" x 12"

Foundation 1:  12" x 12" x 12"  12" x 12" x 12"  12" x 12" x 12"

Foundation 2:  12" x 12" x 12"  12" x 12" x 12"  12" x 12" x 12"

Foundation 3:  12" x 12" x 12"  12" x 12" x 12"  12" x 12" x 12"

**PLUMBING DESIGN**

**PLUMBING DESIGN**

Foundation Type:  12" x 12" x 12"  12" x 12" x 12"  12" x 12" x 12"

Foundation 1:  12" x 12" x 12"  12" x 12" x 12"  12" x 12" x 12"

Foundation 2:  12" x 12" x 12"  12" x 12" x 12"  12" x 12" x 12"

Foundation 3:  12" x 12" x 12"  12" x 12" x 12"  12" x 12" x 12"

**HABITAT RE-STORE**

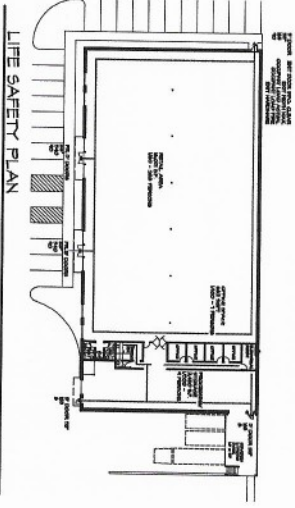
6138 CAROLINA BEACH ROAD  
 WILMINGTON, NORTH CAROLINA

**SCHEDULE OF DRAWINGS**

- COVER
- A-1 FLOOR PLAN & DETAILS
- A-2 ELEVATIONS
- A-3 ENLARGED PLANS
- A-4 BUILDING SECTIONS
- A-5 WALL SECTIONS
- S-1 FOUNDATION PLAN
- S-2 FOUNDATION DETAILS
- P-1 PLUMBING SCHEDULES & NOTES
- P-2 PLUMBING WASTE PLAN
- P-3 PLUMBING SUPPLY PLAN
- P-4 PLUMBING RISERS & EWH DETAIL
- P-5 GAS SUPPLY PLAN
- P-6 GAS NOTES & RISER
- M-1 MECHANICAL SCHEDULES & NOTES
- M-2 MECHANICAL DETAILS
- E-1 ELECTRICAL NOTES & SCHEDULE
- E-2 ELECTRICAL LIGHTING PLAN
- E-3 ELECTRICAL POWER PLAN
- E-4 ROOF PLAN
- E-5 ELECTRICAL PANELS & RISERS
- E-6 ELECTRICAL DETAILS
- FA-1 FIRE ALARM DETAILS & NOTES
- FA-2 FIRE ALARM MATRIX PLAN

**NOTES**

1. CONTRACTOR TO INCLUDE A COMPONENT-PROVIDED METAL BUILDING DESIGN.
2. FOUNDATION PLANS TO BE COMPLETED AFTER COMPONENTS METAL BUILDING PLANS ARE COMPLETED.
3. CONTRACTOR TO INCLUDE INSTALLATION OF FIRE SPRINKLER SYSTEM.



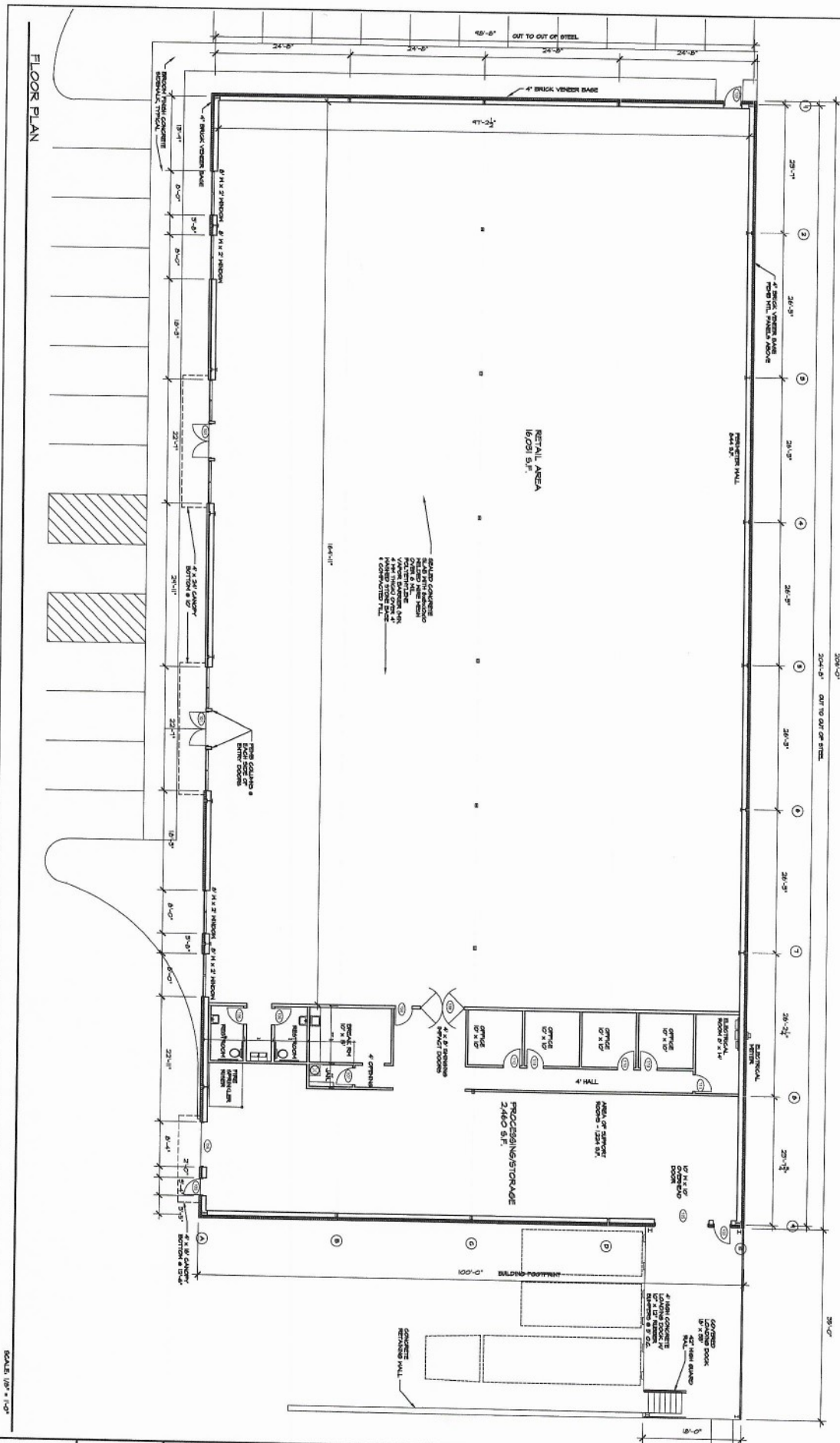
**HOOD HERRING ARCHITECTURE PLLP**

WILMINGTON OFFICE  
 500 North First Street  
 Wilmington, NC 28401  
 Phone: 910.251.6644  
 Fax: 910.251.6645  
 Wilson Office  
 11111 Highway 101  
 Wilson, NC 27891  
 Phone: 919.252.2222  
 Fax: 919.252.2221



**HABITAT RE-STORE**  
 6138 CAROLINA BEACH ROAD  
 WILMINGTON, NORTH CAROLINA

DATE: 10/28/21  
 DRAWN BY: [Name]  
 CHECKED BY: [Name]  
 COVER



**DOOR SCHEDULE**

NO.	ROOM	HATCHWARE	REMARKS
1	STOCK ROOM	6\"/>	

**ROOM FINISH SCHEDULE**

NO.	ROOM	FLOOR	BASE	WALL	CEILING	FINISH	REMARKS
1	STOCK ROOM	CONCRETE	CONCRETE	CONCRETE	CONCRETE	CONCRETE	
2	OFFICE	CONCRETE	CONCRETE	CONCRETE	CONCRETE	CONCRETE	
3	RESTROOM	CONCRETE	CONCRETE	CONCRETE	CONCRETE	CONCRETE	
4	TOILET	CONCRETE	CONCRETE	CONCRETE	CONCRETE	CONCRETE	
5	CLOSET	CONCRETE	CONCRETE	CONCRETE	CONCRETE	CONCRETE	
6	STAIR	CONCRETE	CONCRETE	CONCRETE	CONCRETE	CONCRETE	

**HABITAT RE-STORE**  
6138 CAROLINA BEACH ROAD  
WILMINGTON, NORTH CAROLINA

**HOOD • HERRING**  
ARCHITECTURE  
P.L.L.C.

WILMINGTON OFFICE  
500 North Front Street  
Wilmington, NC 28402  
Phone: 757.253.2000  
Fax: 757.253.2001

WILSON OFFICE  
121 East Rock Street  
Wilson, NC 27590  
Phone: 252.352.7200  
Fax: 252.352.7201

SCALE: 1/8" = 1'-0"

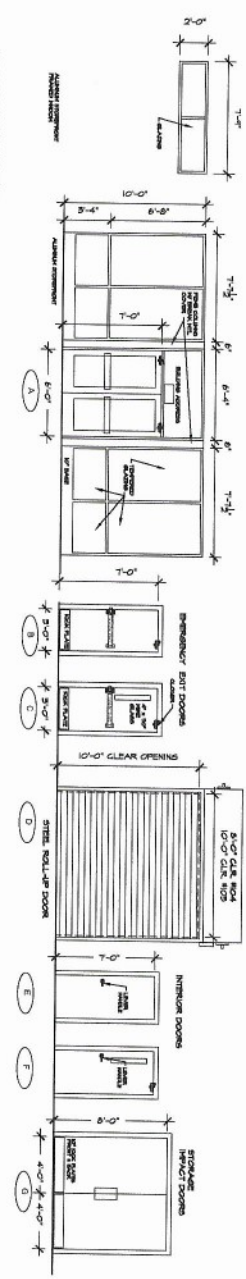
**A-1**

DATE: 10/25/21

BY: JPH

NO. 20210001



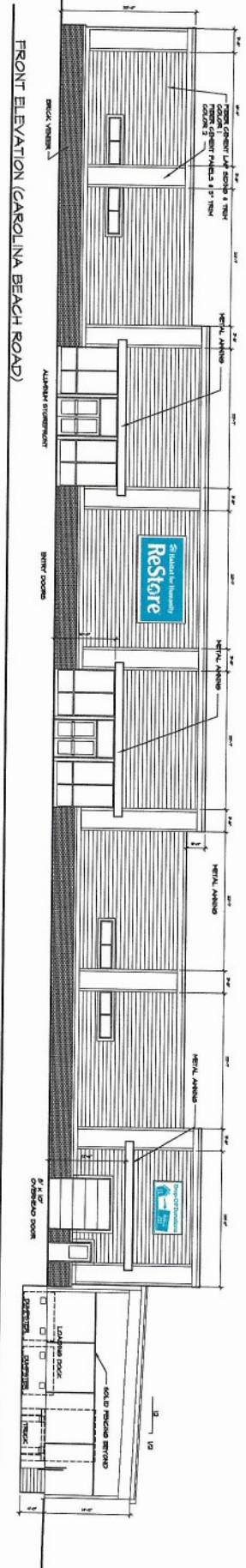


DOOR ELEVATIONS

SCALE: 1/4" = 1'-0"

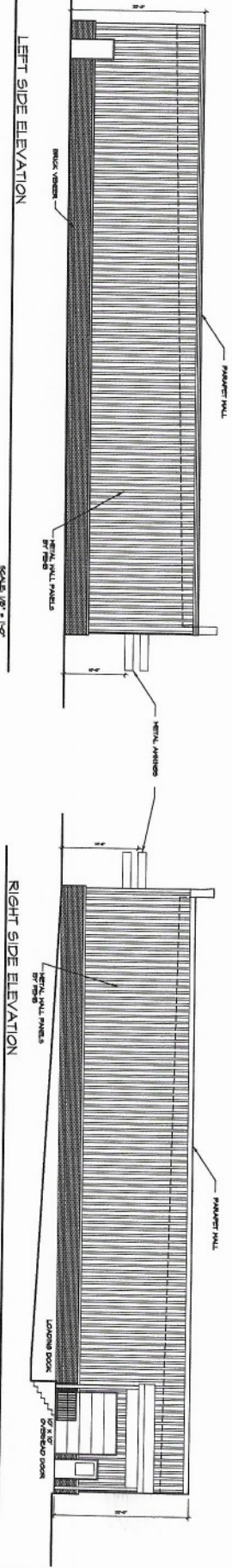
TOP WALL DETAIL

SCALE: 1/4" = 1'-0"



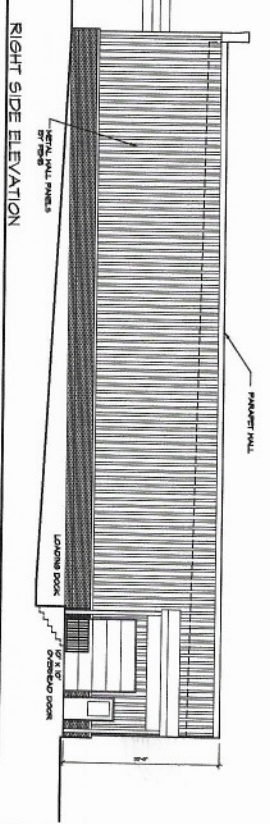
FRONT ELEVATION (CAROLINA BEACH ROAD)

SCALE: 1/8" = 1'-0"



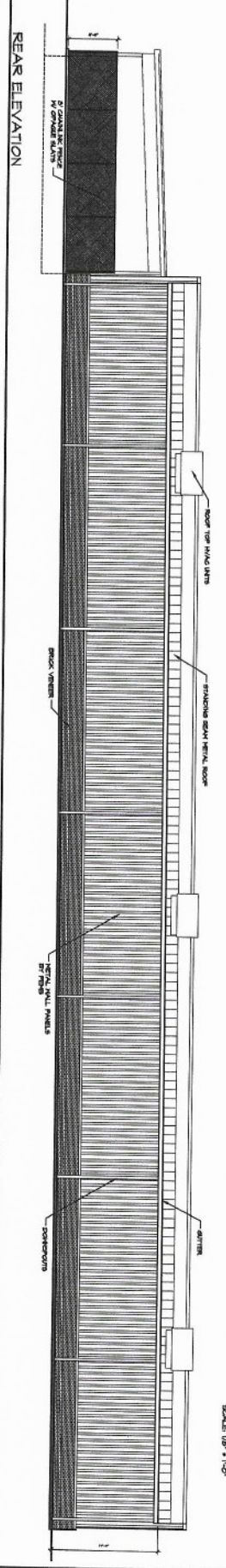
LEFT SIDE ELEVATION

SCALE: 1/8" = 1'-0"



RIGHT SIDE ELEVATION

SCALE: 1/8" = 1'-0"



REAR ELEVATION

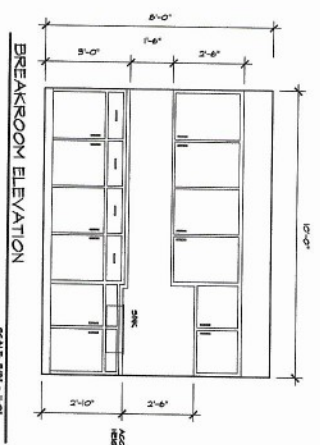
SCALE: 1/8" = 1'-0"



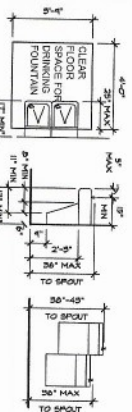
HOOD + HERRING ARCHITECTURE FLLP  
 215 East 7th Street  
 Wilmington, NC 28401  
 Phone: 910.251.9600  
 Fax: 910.251.9601  
 Wilson Office  
 215 East 7th Street  
 Wilson, NC 27597  
 Phone: 252.753.2700  
 Fax: 252.753.2701

HABITAT RE-STORE  
 6138 CAROLINA BEACH ROAD  
 WILMINGTON, NORTH CAROLINA

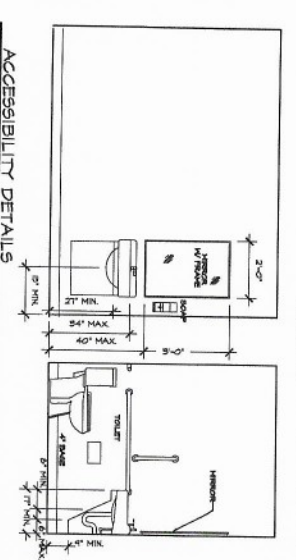
DATE: 10/28/21  
 DRAWN BY: MAM  
 CHECKED BY: MAM  
 PROJECT NO: 21-0000



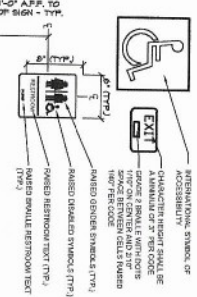
**BREAKROOM ELEVATION**  
SCALE: 3/8" = 1'-0"



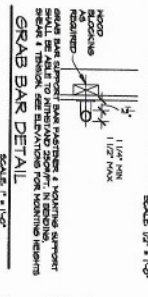
**DRINKING FOUNTAIN CLEARANCES**  
SCALE: 3/8" = 1'-0"



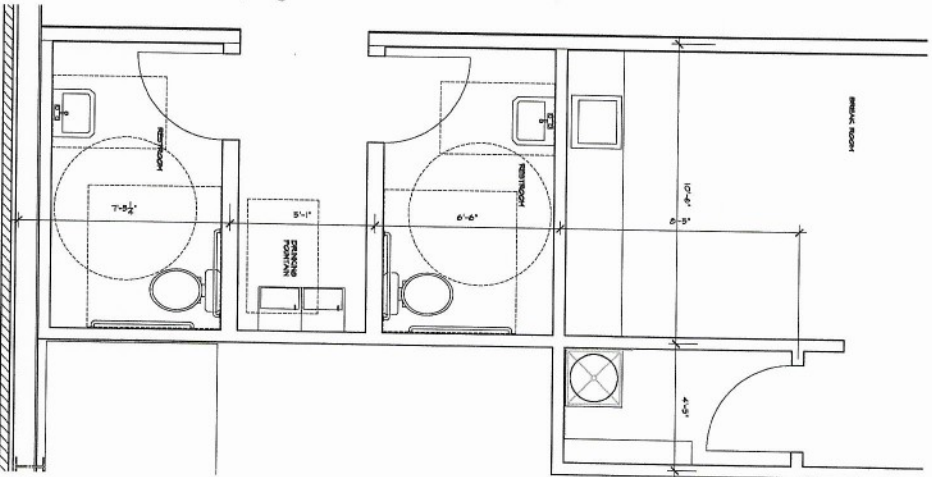
**ACCESSIBILITY DETAILS**  
SCALE: 3/8" = 1'-0"



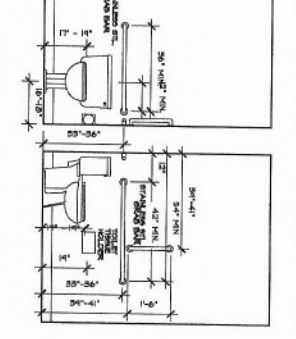
**ACCESSIBLE SIGNAGE**  
SCALE: 1/2" = 1'-0"



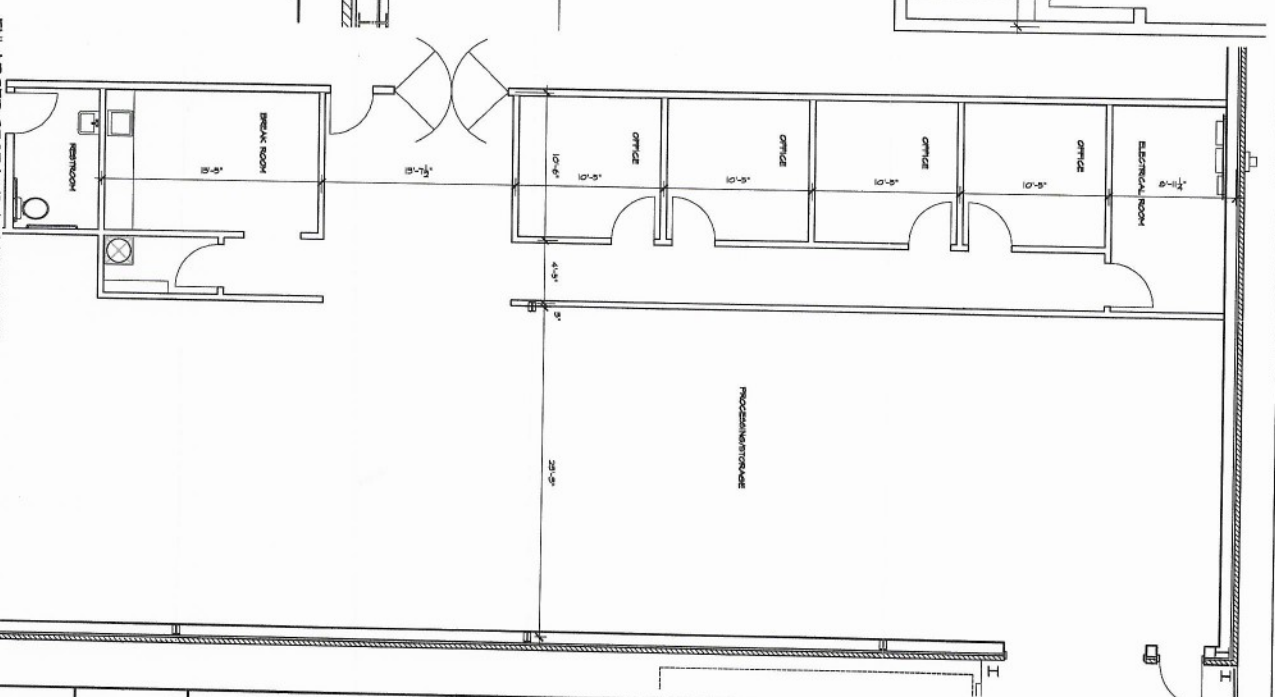
**GRAB BAR DETAIL**  
SCALE: 1" = 1'-0"



**ENLARGED RESTROOM**  
SCALE: 1/2" = 1'-0"



**ENLARGED RESTROOM**  
SCALE: 1/2" = 1'-0"



**ENLARGED STORAGE / OFFICE PLAN**  
SCALE: 1/4" = 1'-0"



**HOOD-HERRING ARCHITECTURE PLLP**

315 East 7th Street  
Wilmington, NC 28401  
Phone: 910.252.8600  
Facsimile: 910.252.8600

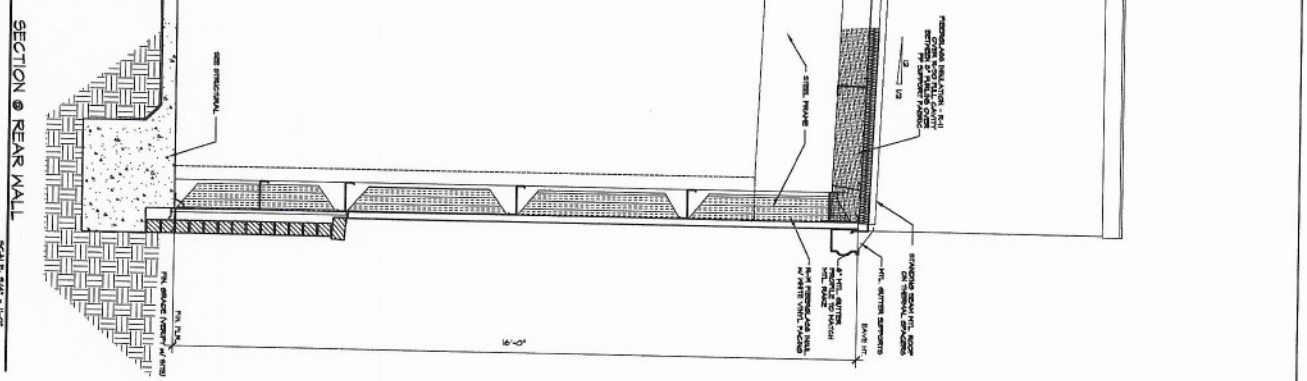
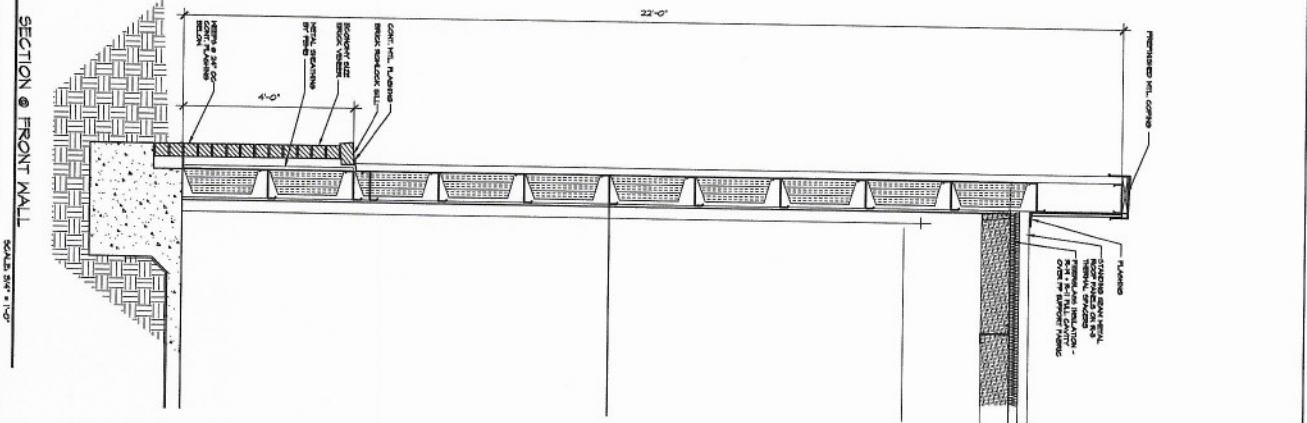
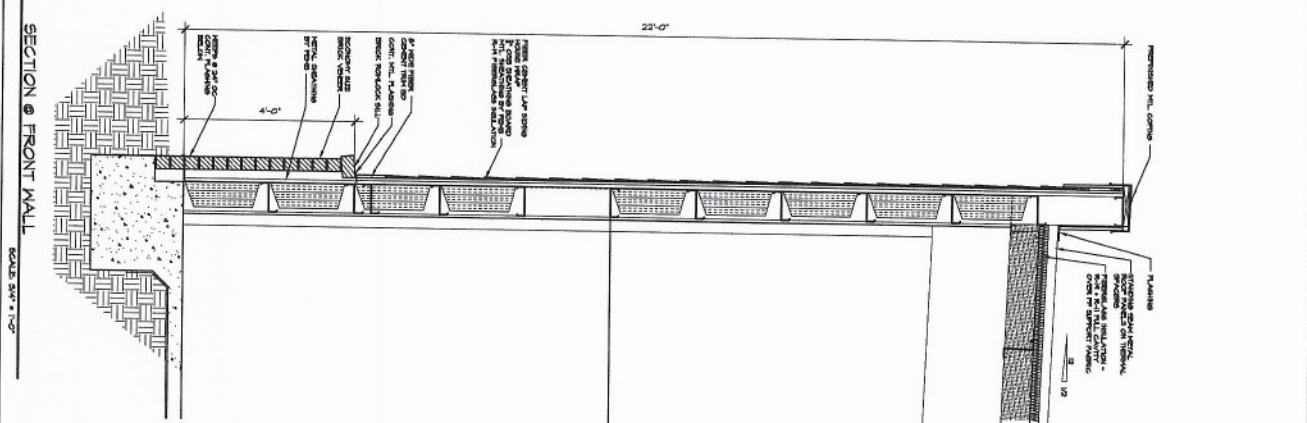
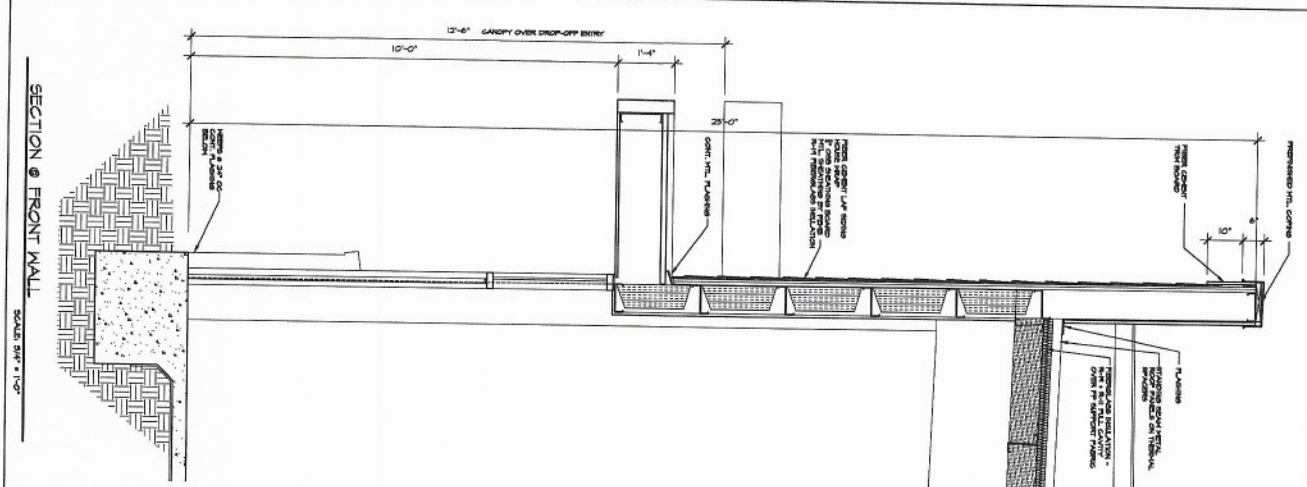
Wilson Office  
211 East 7th Street  
Wilmington, NC 28401  
Phone: 910.252.7200  
Facsimile: 910.252.7201

**HABITAT RE-STORE**  
6138 CAROLINA BEACH ROAD  
WILMINGTON, NORTH CAROLINA

**A-4**







DATE: 10/25/21  
 DRAWN BY: [Signature]  
 CHECKED BY: [Signature]

**HABITAT RE-STORE**  
 6138 CAROLINA BEACH ROAD  
 WILMINGTON, NORTH CAROLINA

**HOOD • HERRING**  
 ARCHITECTURE  
 PLLC

1500 5th Floor  
 200 Bank Street  
 Wilmington, NC 28402  
 Phone: 336.251.8888  
 Fax: 336.251.8889

WILSON OFFICE  
 215 East 8th Street  
 Wilson, NC 28593  
 Phone: 252.797.7158  
 Fax: 252.797.7200









○ SANITARY PAV. HEX NOSES  
 L OTHER SYMBOLS FROM P13.5 (SEE OTHER SHEETS)

PLUMBING PLAN - SCALE: 1/8"=1'-0"

P2

DATE: 10/05/2021  
 21248  
 10/05/2021

HABITAT RESTORE  
 6138 CAROLINA BEACH ROAD  
 WILMINGTON, NORTH CAROLINA



**Kilian Engineering, Inc.**  
 PO Box 3321, Henderson, NC 27531 | www.kilianeng.com  
 (919) 438-8778 | CORPORATE LICENSE C-2277

**HOOD • HERRING ARCHITECTURE**  
 PLLP

ISSUED FROM:  
 WILMINGTON OFFICE  
 403 South French Street  
 Wilmington, NC 28401  
 Phone: 910.355.8800  
 Fax: 910.351.9889  
 WILSON OFFICE:  
 212 East Third Street  
 Wilson, NC 27603  
 Phone: 252.299.2700  
 Fax: 252.299.2700





- SUPPLY PIPING NOTES**
1. ALL SUPPLY PIPING SHALL BE 1/2" DIA. GALV. STEEL PIPE UNLESS OTHERWISE NOTED. ALL FITTINGS SHALL BE 1/2" DIA. GALV. STEEL UNLESS OTHERWISE NOTED. ALL VALVES SHALL BE 1/2" DIA. GALV. STEEL UNLESS OTHERWISE NOTED. ALL PIPING SHALL BE INSTALLED IN ACCORDANCE WITH THE 2015 INTERNATIONAL PLUMBING CODE (IPC) AND ALL APPLICABLE LOCAL CODES.
  2. WATER SHALL BE PROVIDED FROM THE CITY WATER MAIN. THE WATER MAIN SHALL BE 1/2" DIA. GALV. STEEL PIPE UNLESS OTHERWISE NOTED. ALL PIPING SHALL BE INSTALLED IN ACCORDANCE WITH THE 2015 INTERNATIONAL PLUMBING CODE (IPC) AND ALL APPLICABLE LOCAL CODES.

DOMESTIC WATER DELIVERY PLAN - SCALE: 1/8" = 1' - 1"

P3

HABITAT RE-STORE  
 6138 CAROLINA BEACH ROAD  
 WILMINGTON, NORTH CAROLINA

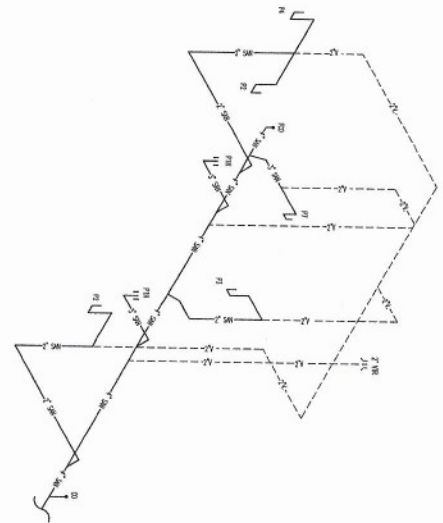
217-248-2124  
 10/06/2021



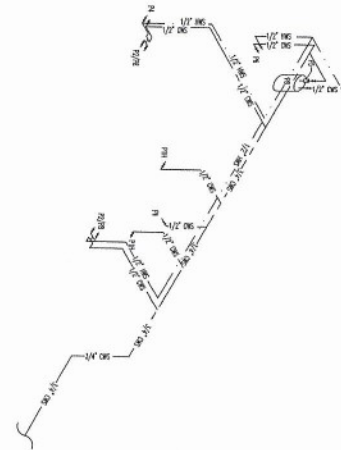
**Kilian Engineering, Inc.**  
 20 Elm Street, Rockwell, NC 27708 | www.kilianengineering.com  
 (919) 251-4388 | CORPORATE LICENSE C 2277

**HOOD • HERRING ARCHITECTURE P.C.**

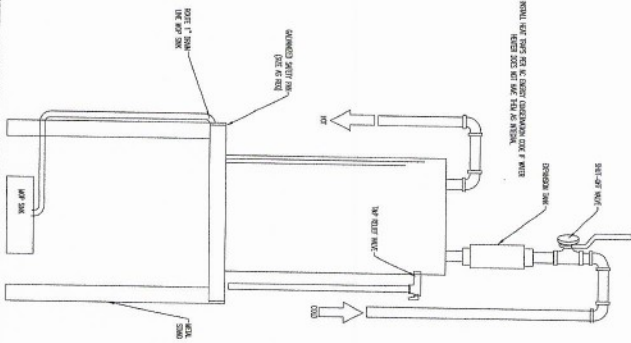
ISSUED FROM:  
 WILMINGTON OFFICE  
 213 East Ninth Street  
 Wilmington, NC 28401  
 Phone: 910-251-8399  
 Fax: 910-251-0989  
 WILSON OFFICE:  
 213 East Ninth Street  
 Wilson, NC 27893  
 Phone: 252-796-2706  
 Fax: 252-796-2708



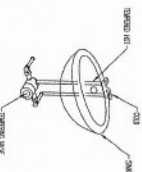
DWV RISER - NO SCALE 1



DOMESTIC WATER RISER - NO SCALE 2



ELECTRIC WATER HEATER DETAIL - NO SCALE 3



THERMOSTATIC MIXING VALVE DETAIL - NO SCALE 4

P4

SHEET NUMBER

10/26/2021

HABITAT RE-STORE  
 6138 CAROLINA BEACH ROAD  
 WILMINGTON, NORTH CAROLINA

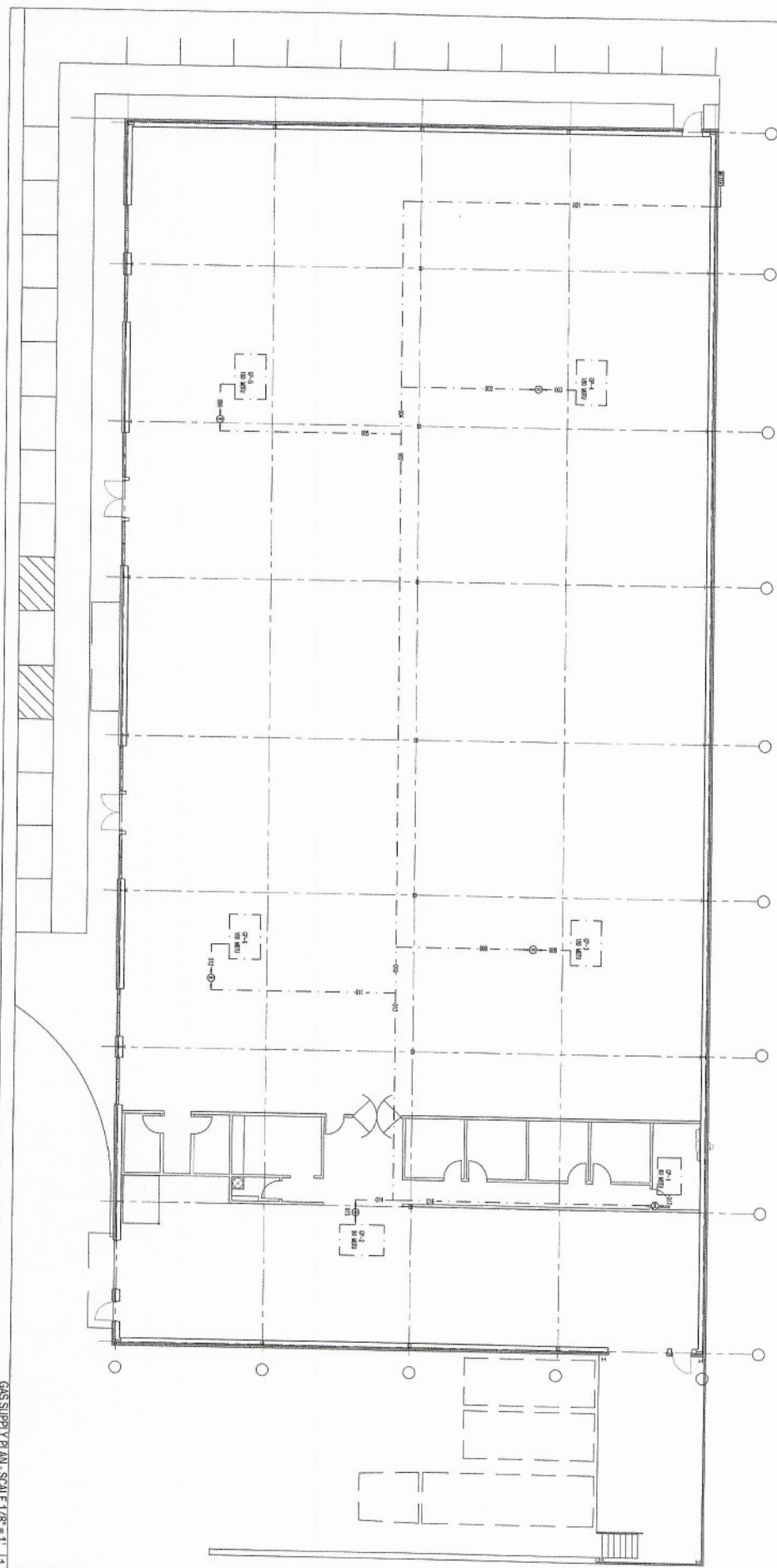


**Kilian Engineering, Inc.**  
 PO Box 2001, Henderson, NC 27536 | www.kilianeng.com  
 P: 252.438.6776 | CORPORATE LICENSE C2277

**HOOD • HERRING ARCHITECTURE**  
 PLLP

ISSUED FROM:  
 WILMINGTON OFFICE  
 607 South Park Street  
 Wilmington, NC 28401  
 Phone: 910.231.8895  
 Fax: 910.231.9999  
 WILSON OFFICE:  
 243 East Ninth Street  
 Wilson, NC 27897  
 Phone: 252.349.2708  
 Fax: 252.349.2700





SEE LINE SCHEDULE FOR QUANTITIES

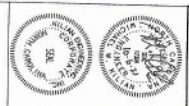
SECTION	SIZE	TYPE	QUANTITY	UNIT	DESCRIPTION
001	1/2"	SC	1	FT	1/2" SC
002	3/4"	SC	1	FT	3/4" SC
003	1"	SC	1	FT	1" SC
004	1 1/4"	SC	1	FT	1 1/4" SC
005	1 1/2"	SC	1	FT	1 1/2" SC
006	2"	SC	1	FT	2" SC
007	2 1/2"	SC	1	FT	2 1/2" SC
008	3"	SC	1	FT	3" SC
009	3 1/2"	SC	1	FT	3 1/2" SC
010	4"	SC	1	FT	4" SC
011	4 1/2"	SC	1	FT	4 1/2" SC
012	5"	SC	1	FT	5" SC
013	5 1/2"	SC	1	FT	5 1/2" SC
014	6"	SC	1	FT	6" SC
015	6 1/2"	SC	1	FT	6 1/2" SC
016	7"	SC	1	FT	7" SC
017	7 1/2"	SC	1	FT	7 1/2" SC
018	8"	SC	1	FT	8" SC
019	8 1/2"	SC	1	FT	8 1/2" SC
020	9"	SC	1	FT	9" SC
021	9 1/2"	SC	1	FT	9 1/2" SC
022	10"	SC	1	FT	10" SC
023	10 1/2"	SC	1	FT	10 1/2" SC
024	11"	SC	1	FT	11" SC
025	11 1/2"	SC	1	FT	11 1/2" SC
026	12"	SC	1	FT	12" SC
027	12 1/2"	SC	1	FT	12 1/2" SC
028	13"	SC	1	FT	13" SC
029	13 1/2"	SC	1	FT	13 1/2" SC
030	14"	SC	1	FT	14" SC
031	14 1/2"	SC	1	FT	14 1/2" SC
032	15"	SC	1	FT	15" SC
033	15 1/2"	SC	1	FT	15 1/2" SC
034	16"	SC	1	FT	16" SC
035	16 1/2"	SC	1	FT	16 1/2" SC
036	17"	SC	1	FT	17" SC
037	17 1/2"	SC	1	FT	17 1/2" SC
038	18"	SC	1	FT	18" SC
039	18 1/2"	SC	1	FT	18 1/2" SC
040	19"	SC	1	FT	19" SC
041	19 1/2"	SC	1	FT	19 1/2" SC
042	20"	SC	1	FT	20" SC
043	20 1/2"	SC	1	FT	20 1/2" SC
044	21"	SC	1	FT	21" SC
045	21 1/2"	SC	1	FT	21 1/2" SC
046	22"	SC	1	FT	22" SC
047	22 1/2"	SC	1	FT	22 1/2" SC
048	23"	SC	1	FT	23" SC
049	23 1/2"	SC	1	FT	23 1/2" SC
050	24"	SC	1	FT	24" SC
051	24 1/2"	SC	1	FT	24 1/2" SC
052	25"	SC	1	FT	25" SC
053	25 1/2"	SC	1	FT	25 1/2" SC
054	26"	SC	1	FT	26" SC
055	26 1/2"	SC	1	FT	26 1/2" SC
056	27"	SC	1	FT	27" SC
057	27 1/2"	SC	1	FT	27 1/2" SC
058	28"	SC	1	FT	28" SC
059	28 1/2"	SC	1	FT	28 1/2" SC
060	29"	SC	1	FT	29" SC
061	29 1/2"	SC	1	FT	29 1/2" SC
062	30"	SC	1	FT	30" SC
063	30 1/2"	SC	1	FT	30 1/2" SC
064	31"	SC	1	FT	31" SC
065	31 1/2"	SC	1	FT	31 1/2" SC
066	32"	SC	1	FT	32" SC
067	32 1/2"	SC	1	FT	32 1/2" SC
068	33"	SC	1	FT	33" SC
069	33 1/2"	SC	1	FT	33 1/2" SC
070	34"	SC	1	FT	34" SC
071	34 1/2"	SC	1	FT	34 1/2" SC
072	35"	SC	1	FT	35" SC
073	35 1/2"	SC	1	FT	35 1/2" SC
074	36"	SC	1	FT	36" SC
075	36 1/2"	SC	1	FT	36 1/2" SC
076	37"	SC	1	FT	37" SC
077	37 1/2"	SC	1	FT	37 1/2" SC
078	38"	SC	1	FT	38" SC
079	38 1/2"	SC	1	FT	38 1/2" SC
080	39"	SC	1	FT	39" SC
081	39 1/2"	SC	1	FT	39 1/2" SC
082	40"	SC	1	FT	40" SC
083	40 1/2"	SC	1	FT	40 1/2" SC
084	41"	SC	1	FT	41" SC
085	41 1/2"	SC	1	FT	41 1/2" SC
086	42"	SC	1	FT	42" SC
087	42 1/2"	SC	1	FT	42 1/2" SC
088	43"	SC	1	FT	43" SC
089	43 1/2"	SC	1	FT	43 1/2" SC
090	44"	SC	1	FT	44" SC
091	44 1/2"	SC	1	FT	44 1/2" SC
092	45"	SC	1	FT	45" SC
093	45 1/2"	SC	1	FT	45 1/2" SC
094	46"	SC	1	FT	46" SC
095	46 1/2"	SC	1	FT	46 1/2" SC
096	47"	SC	1	FT	47" SC
097	47 1/2"	SC	1	FT	47 1/2" SC
098	48"	SC	1	FT	48" SC
099	48 1/2"	SC	1	FT	48 1/2" SC
100	49"	SC	1	FT	49" SC
101	49 1/2"	SC	1	FT	49 1/2" SC
102	50"	SC	1	FT	50" SC
103	50 1/2"	SC	1	FT	50 1/2" SC
104	51"	SC	1	FT	51" SC
105	51 1/2"	SC	1	FT	51 1/2" SC
106	52"	SC	1	FT	52" SC
107	52 1/2"	SC	1	FT	52 1/2" SC
108	53"	SC	1	FT	53" SC
109	53 1/2"	SC	1	FT	53 1/2" SC
110	54"	SC	1	FT	54" SC
111	54 1/2"	SC	1	FT	54 1/2" SC
112	55"	SC	1	FT	55" SC
113	55 1/2"	SC	1	FT	55 1/2" SC
114	56"	SC	1	FT	56" SC
115	56 1/2"	SC	1	FT	56 1/2" SC
116	57"	SC	1	FT	57" SC
117	57 1/2"	SC	1	FT	57 1/2" SC
118	58"	SC	1	FT	58" SC
119	58 1/2"	SC	1	FT	58 1/2" SC
120	59"	SC	1	FT	59" SC
121	59 1/2"	SC	1	FT	59 1/2" SC
122	60"	SC	1	FT	60" SC
123	60 1/2"	SC	1	FT	60 1/2" SC
124	61"	SC	1	FT	61" SC
125	61 1/2"	SC	1	FT	61 1/2" SC
126	62"	SC	1	FT	62" SC
127	62 1/2"	SC	1	FT	62 1/2" SC
128	63"	SC	1	FT	63" SC
129	63 1/2"	SC	1	FT	63 1/2" SC
130	64"	SC	1	FT	64" SC
131	64 1/2"	SC	1	FT	64 1/2" SC
132	65"	SC	1	FT	65" SC
133	65 1/2"	SC	1	FT	65 1/2" SC
134	66"	SC	1	FT	66" SC
135	66 1/2"	SC	1	FT	66 1/2" SC
136	67"	SC	1	FT	67" SC
137	67 1/2"	SC	1	FT	67 1/2" SC
138	68"	SC	1	FT	68" SC
139	68 1/2"	SC	1	FT	68 1/2" SC
140	69"	SC	1	FT	69" SC
141	69 1/2"	SC	1	FT	69 1/2" SC
142	70"	SC	1	FT	70" SC
143	70 1/2"	SC	1	FT	70 1/2" SC
144	71"	SC	1	FT	71" SC
145	71 1/2"	SC	1	FT	71 1/2" SC
146	72"	SC	1	FT	72" SC
147	72 1/2"	SC	1	FT	72 1/2" SC
148	73"	SC	1	FT	73" SC
149	73 1/2"	SC	1	FT	73 1/2" SC
150	74"	SC	1	FT	74" SC
151	74 1/2"	SC	1	FT	74 1/2" SC
152	75"	SC	1	FT	75" SC
153	75 1/2"	SC	1	FT	75 1/2" SC
154	76"	SC	1	FT	76" SC
155	76 1/2"	SC	1	FT	76 1/2" SC
156	77"	SC	1	FT	77" SC
157	77 1/2"	SC	1	FT	77 1/2" SC
158	78"	SC	1	FT	78" SC
159	78 1/2"	SC	1	FT	78 1/2" SC
160	79"	SC	1	FT	79" SC
161	79 1/2"	SC	1	FT	79 1/2" SC
162	80"	SC	1	FT	80" SC
163	80 1/2"	SC	1	FT	80 1/2" SC
164	81"	SC	1	FT	81" SC
165	81 1/2"	SC	1	FT	81 1/2" SC
166	82"	SC	1	FT	82" SC
167	82 1/2"	SC	1	FT	82 1/2" SC
168	83"	SC	1	FT	83" SC
169	83 1/2"	SC	1	FT	83 1/2" SC
170	84"	SC	1	FT	84" SC
171	84 1/2"	SC	1	FT	84 1/2" SC
172	85"	SC	1	FT	85" SC
173	85 1/2"	SC	1	FT	85 1/2" SC
174	86"	SC	1	FT	86" SC
175	86 1/2"	SC	1	FT	86 1/2" SC
176	87"	SC	1	FT	87" SC
177	87 1/2"	SC	1	FT	87 1/2" SC
178	88"	SC	1	FT	88" SC
179	88 1/2"	SC	1	FT	88 1/2" SC
180	89"	SC	1	FT	89" SC
181	89 1/2"	SC	1	FT	89 1/2" SC
182	90"	SC	1	FT	90" SC
183	90 1/2"	SC	1	FT	90 1/2" SC
184	91"	SC	1	FT	91" SC
185	91 1/2"	SC	1	FT	91 1/2" SC
186	92"	SC	1	FT	92" SC
187	92 1/2"	SC	1	FT	92 1/2" SC
188	93"	SC	1	FT	93" SC
189	93 1/2"	SC	1	FT	93 1/2" SC
190	94"	SC	1	FT	94" SC
191	94 1/2"	SC	1	FT	94 1/2" SC
192	95"	SC	1	FT	95" SC
193	95 1/2"	SC	1	FT	95 1/2" SC
194	96"	SC	1	FT	96" SC
195	96 1/2"	SC	1	FT	96 1/2" SC
196	97"	SC	1	FT	97" SC
197	97 1/2"	SC	1	FT	97 1/2" SC
198	98"	SC	1	FT	98" SC
199	98 1/2"	SC	1	FT	98 1/2" SC
200	99"	SC	1	FT	99" SC
201	99 1/2"	SC	1	FT	99 1/2" SC
202	100"	SC	1	FT	100" SC

GAS SUPPLY PLAN SCALE 1/8" = 1' 1

P5

DATE: 10/05/2021  
 21248  
 REV: 10/05/2021

HABITAT RE-STORE  
 6138 CAROLINA BEACH ROAD  
 WILMINGTON, NORTH CAROLINA







MECHANICAL UNIT	UNIT TYPE	UNIT MODEL	MECHANICAL UNIT DATA		MECHANICAL UNIT DATA		MECHANICAL UNIT DATA		MECHANICAL UNIT DATA		MECHANICAL UNIT DATA	
			Capacity (CFM)	Capacity (GPM)	Capacity (HP)	Capacity (KW)	Capacity (Tons)	Capacity (BTU/hr)	Capacity (GPM)	Capacity (HP)	Capacity (KW)	Capacity (Tons)
MECH-01	ROOF MOUNTED	RTU-01	1000	1000	1000	1000	1000	1000	1000	1000	1000	1000
MECH-02	ROOF MOUNTED	RTU-02	2000	2000	2000	2000	2000	2000	2000	2000	2000	2000
MECH-03	ROOF MOUNTED	RTU-03	3000	3000	3000	3000	3000	3000	3000	3000	3000	3000
MECH-04	ROOF MOUNTED	RTU-04	4000	4000	4000	4000	4000	4000	4000	4000	4000	4000
MECH-05	ROOF MOUNTED	RTU-05	5000	5000	5000	5000	5000	5000	5000	5000	5000	5000

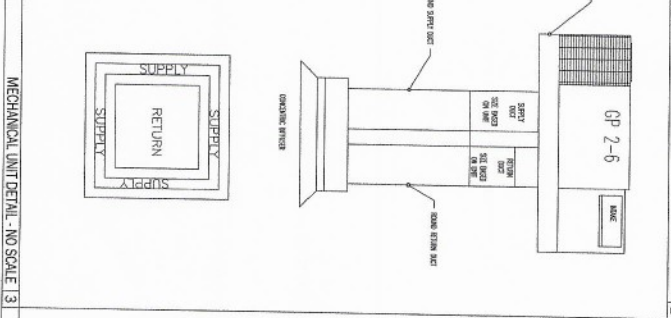
1. MECHANICAL UNIT DATA
2. MECHANICAL UNIT DATA
3. MECHANICAL UNIT DATA
4. MECHANICAL UNIT DATA
5. MECHANICAL UNIT DATA
6. MECHANICAL UNIT DATA
7. MECHANICAL UNIT DATA
8. MECHANICAL UNIT DATA
9. MECHANICAL UNIT DATA
10. MECHANICAL UNIT DATA
11. MECHANICAL UNIT DATA
12. MECHANICAL UNIT DATA
13. MECHANICAL UNIT DATA

MECHANICAL UNIT	UNIT TYPE	UNIT MODEL	MECHANICAL UNIT DATA		MECHANICAL UNIT DATA		MECHANICAL UNIT DATA		MECHANICAL UNIT DATA		MECHANICAL UNIT DATA	
			Capacity (CFM)	Capacity (GPM)	Capacity (HP)	Capacity (KW)	Capacity (Tons)	Capacity (BTU/hr)	Capacity (GPM)	Capacity (HP)	Capacity (KW)	Capacity (Tons)
MECH-01	ROOF MOUNTED	RTU-01	1000	1000	1000	1000	1000	1000	1000	1000	1000	1000
MECH-02	ROOF MOUNTED	RTU-02	2000	2000	2000	2000	2000	2000	2000	2000	2000	2000
MECH-03	ROOF MOUNTED	RTU-03	3000	3000	3000	3000	3000	3000	3000	3000	3000	3000
MECH-04	ROOF MOUNTED	RTU-04	4000	4000	4000	4000	4000	4000	4000	4000	4000	4000
MECH-05	ROOF MOUNTED	RTU-05	5000	5000	5000	5000	5000	5000	5000	5000	5000	5000

1. MECHANICAL UNIT DATA
2. MECHANICAL UNIT DATA
3. MECHANICAL UNIT DATA
4. MECHANICAL UNIT DATA
5. MECHANICAL UNIT DATA
6. MECHANICAL UNIT DATA
7. MECHANICAL UNIT DATA
8. MECHANICAL UNIT DATA
9. MECHANICAL UNIT DATA
10. MECHANICAL UNIT DATA
11. MECHANICAL UNIT DATA
12. MECHANICAL UNIT DATA
13. MECHANICAL UNIT DATA

MECHANICAL UNIT	UNIT TYPE	UNIT MODEL	MECHANICAL UNIT DATA		MECHANICAL UNIT DATA		MECHANICAL UNIT DATA		MECHANICAL UNIT DATA		MECHANICAL UNIT DATA	
			Capacity (CFM)	Capacity (GPM)	Capacity (HP)	Capacity (KW)	Capacity (Tons)	Capacity (BTU/hr)	Capacity (GPM)	Capacity (HP)	Capacity (KW)	Capacity (Tons)
MECH-01	ROOF MOUNTED	RTU-01	1000	1000	1000	1000	1000	1000	1000	1000	1000	1000
MECH-02	ROOF MOUNTED	RTU-02	2000	2000	2000	2000	2000	2000	2000	2000	2000	2000
MECH-03	ROOF MOUNTED	RTU-03	3000	3000	3000	3000	3000	3000	3000	3000	3000	3000
MECH-04	ROOF MOUNTED	RTU-04	4000	4000	4000	4000	4000	4000	4000	4000	4000	4000
MECH-05	ROOF MOUNTED	RTU-05	5000	5000	5000	5000	5000	5000	5000	5000	5000	5000

MECHANICAL DESIGN STATEMENT & MECHANICAL SCHEDULES



1. MECHANICAL UNIT DATA
2. MECHANICAL UNIT DATA
3. MECHANICAL UNIT DATA
4. MECHANICAL UNIT DATA
5. MECHANICAL UNIT DATA
6. MECHANICAL UNIT DATA
7. MECHANICAL UNIT DATA
8. MECHANICAL UNIT DATA
9. MECHANICAL UNIT DATA
10. MECHANICAL UNIT DATA
11. MECHANICAL UNIT DATA
12. MECHANICAL UNIT DATA
13. MECHANICAL UNIT DATA
14. MECHANICAL UNIT DATA
15. MECHANICAL UNIT DATA
16. MECHANICAL UNIT DATA
17. MECHANICAL UNIT DATA
18. MECHANICAL UNIT DATA
19. MECHANICAL UNIT DATA
20. MECHANICAL UNIT DATA
21. MECHANICAL UNIT DATA
22. MECHANICAL UNIT DATA
23. MECHANICAL UNIT DATA
24. MECHANICAL UNIT DATA
25. MECHANICAL UNIT DATA
26. MECHANICAL UNIT DATA
27. MECHANICAL UNIT DATA
28. MECHANICAL UNIT DATA
29. MECHANICAL UNIT DATA
30. MECHANICAL UNIT DATA
31. MECHANICAL UNIT DATA
32. MECHANICAL UNIT DATA
33. MECHANICAL UNIT DATA
34. MECHANICAL UNIT DATA
35. MECHANICAL UNIT DATA
36. MECHANICAL UNIT DATA
37. MECHANICAL UNIT DATA
38. MECHANICAL UNIT DATA
39. MECHANICAL UNIT DATA
40. MECHANICAL UNIT DATA
41. MECHANICAL UNIT DATA
42. MECHANICAL UNIT DATA
43. MECHANICAL UNIT DATA
44. MECHANICAL UNIT DATA
45. MECHANICAL UNIT DATA
46. MECHANICAL UNIT DATA
47. MECHANICAL UNIT DATA
48. MECHANICAL UNIT DATA
49. MECHANICAL UNIT DATA
50. MECHANICAL UNIT DATA
51. MECHANICAL UNIT DATA
52. MECHANICAL UNIT DATA
53. MECHANICAL UNIT DATA
54. MECHANICAL UNIT DATA
55. MECHANICAL UNIT DATA
56. MECHANICAL UNIT DATA
57. MECHANICAL UNIT DATA
58. MECHANICAL UNIT DATA
59. MECHANICAL UNIT DATA
60. MECHANICAL UNIT DATA
61. MECHANICAL UNIT DATA
62. MECHANICAL UNIT DATA
63. MECHANICAL UNIT DATA
64. MECHANICAL UNIT DATA
65. MECHANICAL UNIT DATA
66. MECHANICAL UNIT DATA
67. MECHANICAL UNIT DATA
68. MECHANICAL UNIT DATA
69. MECHANICAL UNIT DATA
70. MECHANICAL UNIT DATA
71. MECHANICAL UNIT DATA
72. MECHANICAL UNIT DATA
73. MECHANICAL UNIT DATA
74. MECHANICAL UNIT DATA
75. MECHANICAL UNIT DATA
76. MECHANICAL UNIT DATA
77. MECHANICAL UNIT DATA
78. MECHANICAL UNIT DATA
79. MECHANICAL UNIT DATA
80. MECHANICAL UNIT DATA
81. MECHANICAL UNIT DATA
82. MECHANICAL UNIT DATA
83. MECHANICAL UNIT DATA
84. MECHANICAL UNIT DATA
85. MECHANICAL UNIT DATA
86. MECHANICAL UNIT DATA
87. MECHANICAL UNIT DATA
88. MECHANICAL UNIT DATA
89. MECHANICAL UNIT DATA
90. MECHANICAL UNIT DATA
91. MECHANICAL UNIT DATA
92. MECHANICAL UNIT DATA
93. MECHANICAL UNIT DATA
94. MECHANICAL UNIT DATA
95. MECHANICAL UNIT DATA
96. MECHANICAL UNIT DATA
97. MECHANICAL UNIT DATA
98. MECHANICAL UNIT DATA
99. MECHANICAL UNIT DATA
100. MECHANICAL UNIT DATA

MECHANICAL NOTES AND SCHEDULES 1/4

HABITAT RE-STORE

6138 CAROLINA BEACH ROAD  
WILMINGTON, NORTH CAROLINA

21248  
NEW  
10/26/2021  
REVISED

M1

Kilian Engineering, Inc.

HOOD • HERRING ARCHITECTURE

WILMINGTON OFFICE  
1111 W. 11th Street  
Wilmington, NC 28401  
Phone: 910.338.8888  
Fax: 910.338.8889

213 East Ninth Street  
Wilmington, NC 28401  
Phone: 910.338.8888  
Fax: 910.338.8889













- LIGHTING PLAN HEX NOTES
1. PANEL A
  2. PANEL B
  3. ALL CODES IN THE PLAN ARE IN GROUP SCHEDULE 20000
  4. ROOM FLOOR IS THE ROOM IN THE PLAN

LIGHTING PLAN SCALE 1/4"=1'-2"

E2

HABITAT RESTORE

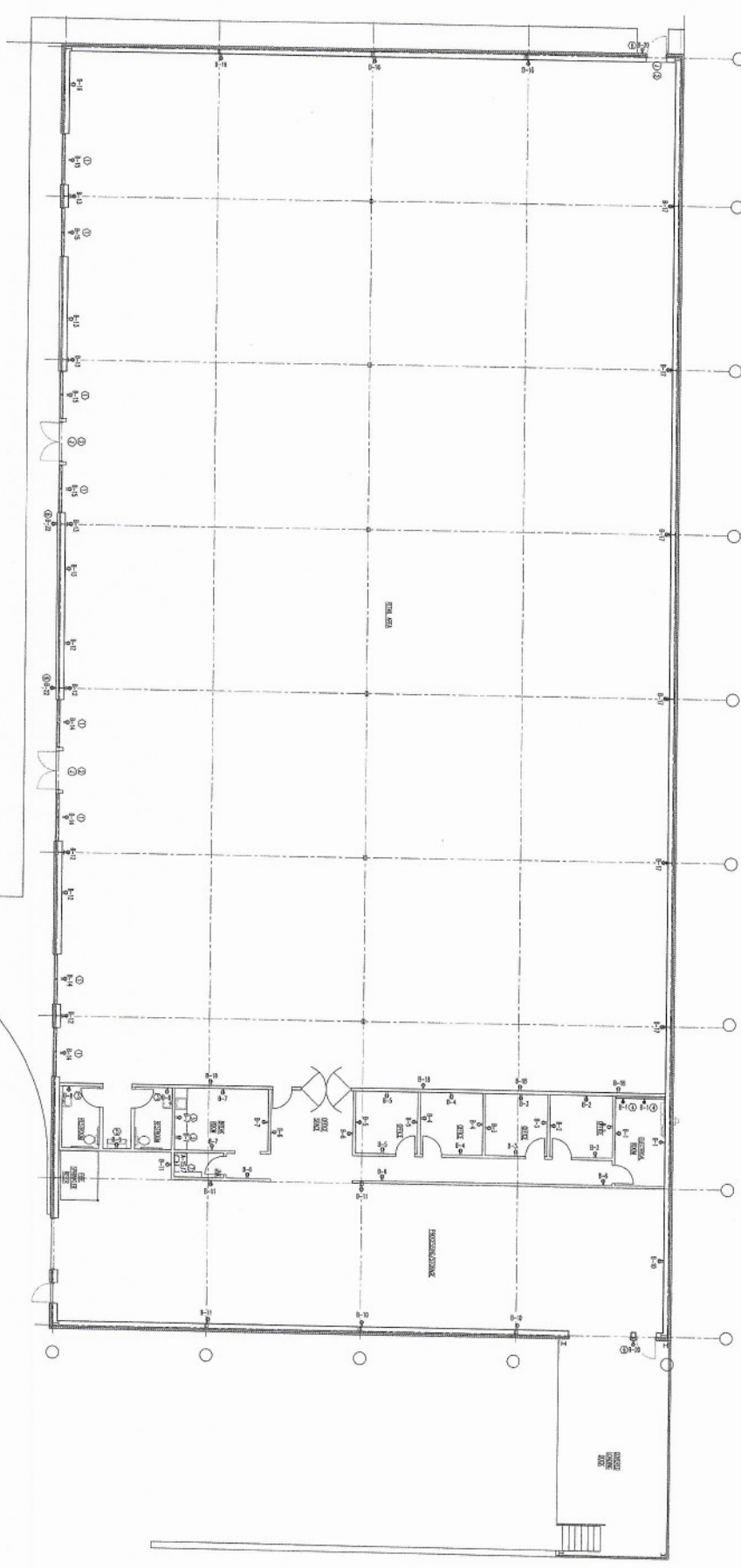
6138 CAROLINA BEACH ROAD  
WILMINGTON, NORTH CAROLINA



**Kilian Engineering, Inc.**  
 10 Box 2016, No. 1st St., W. 27036 | www.kilianengineering.com  
 P: 336.428.1100 | LICENSE 01201

**HOOD • HERRING ARCHITECTURE**  
 PLLP

HOOD HERRING  
 WILMINGTON OFFICE  
 807 South Peach Street  
 Wilmington, NC 28401  
 Phone: 336.251.8898  
 Fax: 336.251.8899  
 WILSON OFFICE  
 213 East 10th Street  
 Wilson, NC 27894  
 Phone: 252.399.1100  
 Facsimile: 252.399.2700



- POWER PLAN HEX NOTES
1. SHOW MARKS FROM NOTES OF OTHER SHEETS
  2. 20" DIA. MARKS IN COLUMN HEADS
  3. 20" DIA. MARKS IN ROW HEADS
  4. 20" DIA. MARKS FROM OTHER SHEETS
  5. 20" DIA. MARKS FROM OTHER SHEETS
  6. 20" DIA. MARKS FROM OTHER SHEETS
  7. MARKS IN 20" DIA. MARKS FROM OTHER SHEETS

POWER PLAN - SCALE 1/8"=1' 1

E3

DATE: 10/05/2021  
 DRAWN BY: REW  
 CHECKED BY: [Signature]  
 PROJECT: HABITAT RE-STORE

HABITAT RE-STORE  
 6138 CAROLINA BEACH ROAD  
 WILMINGTON, NORTH CAROLINA

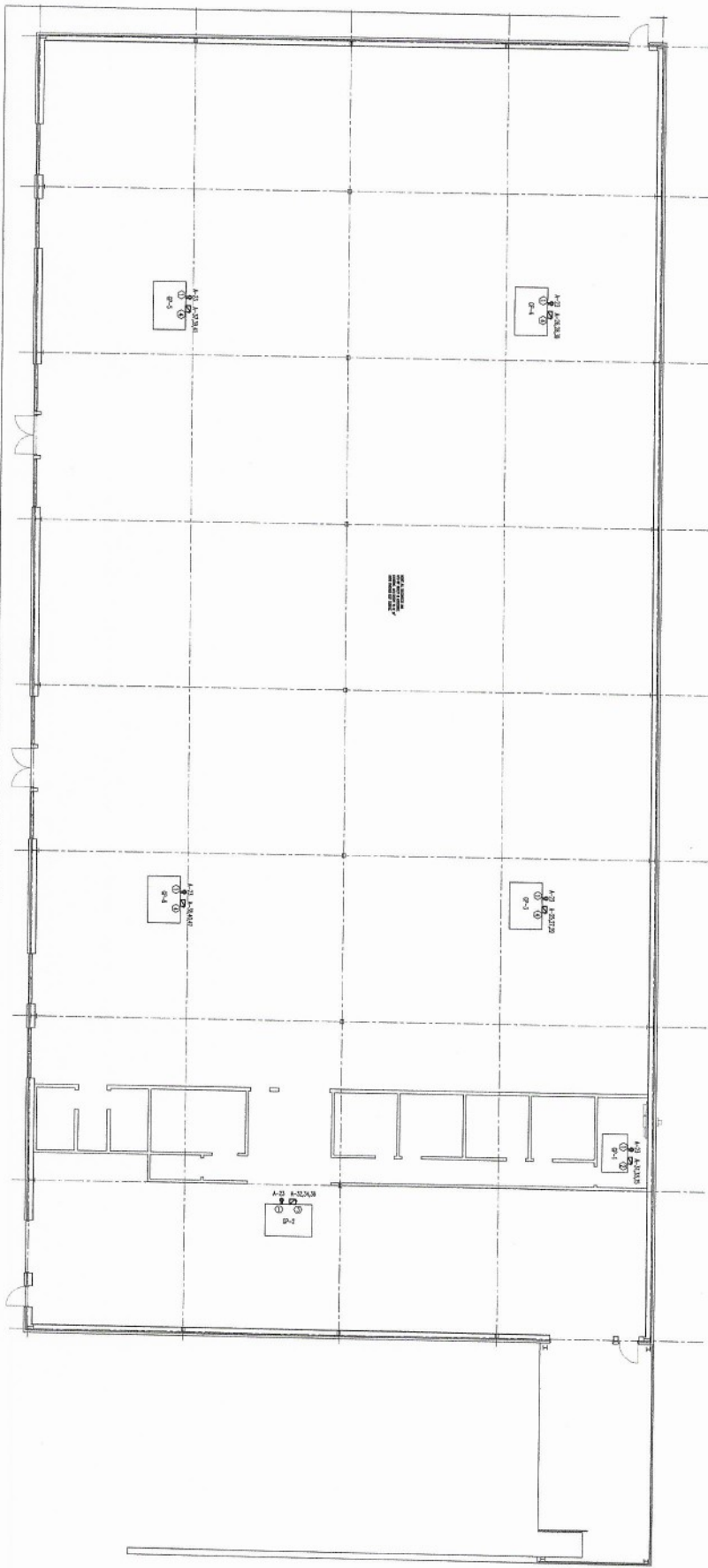


**Kilian Engineering, Inc.**  
 P.O. Box 5201, Beaufort, NC 28516 | www.kilianengineering.com  
 Tel: 252-438-6778 | Fax: 252-438-6779

**HOOD • HERRING**  
 ARCHITECTURE  
 PLLP

BASED FROM:  
 WILMINGTON OFFICE  
 201 South Fourth Street  
 Wilmington, NC 28401  
 Phone: 910-251-4899  
 Fax: 910-251-4995  
 Wilson Office:  
 211 East Beach Street  
 Wilson, NC 27897  
 Phone: 252-284-2300  
 Fax: 252-284-2301





- POWER PLAN HEX NOTES**
1. SEE FOR NOTES FOR SYMBOL
  2. SEE FOR NOTES FOR SYMBOL
  3. SEE FOR NOTES FOR SYMBOL
  4. SEE FOR NOTES FOR SYMBOL

ROOF PLAN - SCALE 1/8"=1'-0"

E4

DATE: 10/05/2021  
 TIME: 2:24:48  
 USER: REW

HABITAT RE-STORE  
 6138 CAROLINA BEACH ROAD  
 WILMINGTON, NORTH CAROLINA



**Kilian Engineering, Inc.**  
 1000 3302 Henderson, NC 27536 | www.kilianengineering.com  
 P: 252.436.6781 | C: 252.436.6782

**HOOD • HERRING ARCHITECTURE**  
 PLLP

DESIGNED FROM:  
 WILMINGTON OFFICE  
 802 South French Street  
 Wilmington, NC 28401  
 Phone: 315.551.4800  
 Fax: 315.551.9889  
 WILSON OFFICE  
 211 East York Street  
 Wilson, NC 27893  
 Phone: 252.589.2700  
 Fax: 252.589.2701

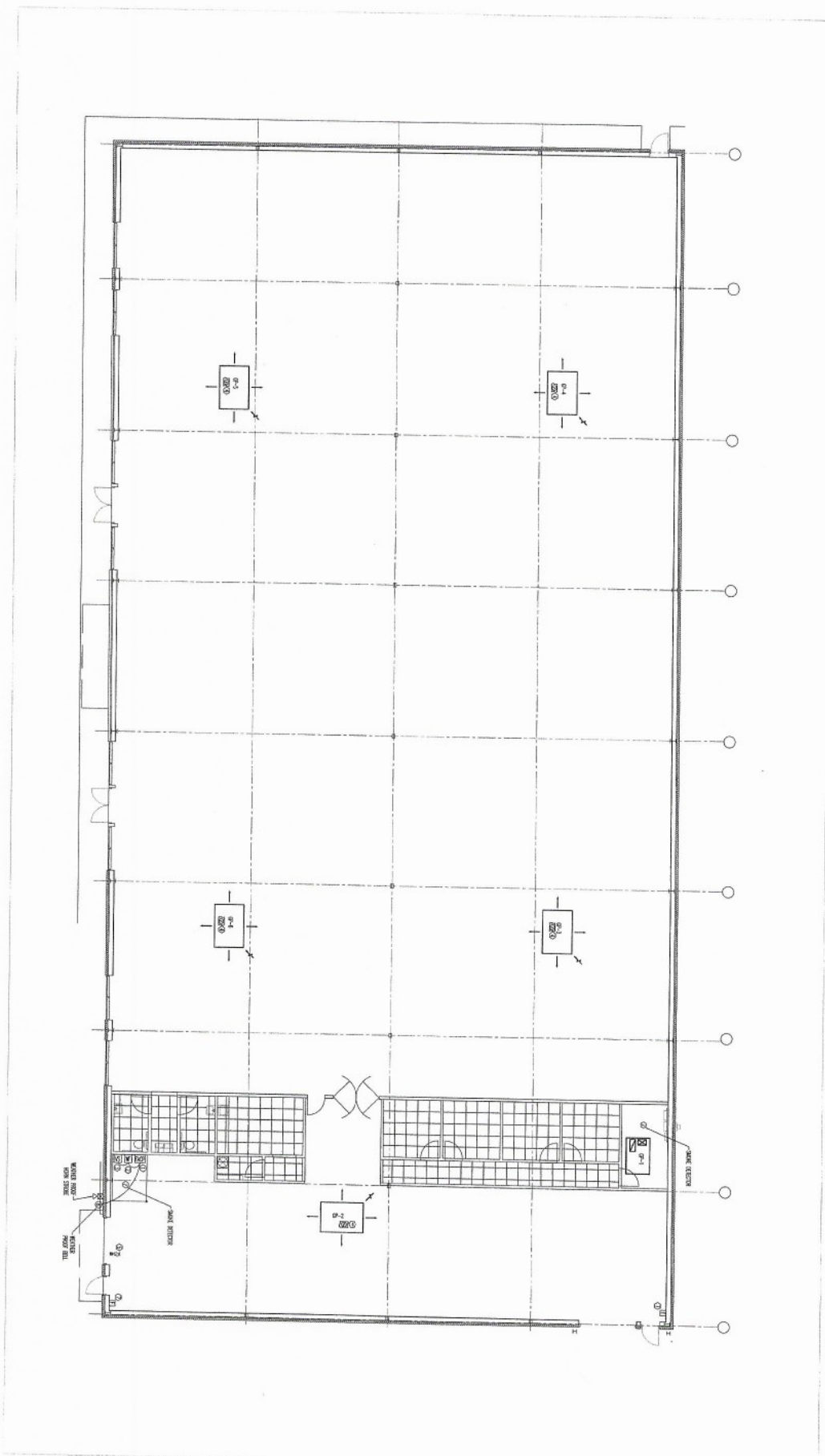












- FIRE ALARM HEX NOTES**
1. FIRE ALARM CONTROL PANEL
  2. MANUAL PULL STATION
  3. SMOKE DETECTOR SWITCH (TYPICAL SYMBOL)
  4. DET. PANEL REVISION AREA NO. 202101 11.15.20

FIRE ALARM MATRIX 1

FA2

DATE: 2/24/21  
 DRAWN BY: [Signature]  
 CHECKED BY: [Signature]  
 10/28/2021  
 REVISION

HABITAT RE-STORE  
 6138 CAROLINA BEACH ROAD  
 WILMINGTON, NORTH CAROLINA



**Kilian Engineering, Inc.**  
 P.O. Box 2801, Henderson, NC 27536 | www.kileng.com  
 (919) 436-8778 | COMPANY LICENSE 02271

**HOOD • HERRING ARCHITECTURE**  
 P.L.L.P.

DESIGNED BY: [Signature]  
 D WILMINGTON OFFICE  
 807 South Fourth Street  
 Wilmington, NC 28401  
 Phone: 910.251.8226  
 Fax: 910.251.8226  
 WILSON OFFICE  
 271 East Sixth Street  
 Wilson, NC 27597  
 Phone: 252.399.2300  
 Fax: 252.399.2301