



park point

±64,784 - ±107,000 SF

AVAILABLE FOR LEASE

NEWMARK

**SHAWN
KELLENBERGER**

408.987.4170
Shawn.Kellenberger@nrmk.com
RE LIC #01706215

**MIKE
SAIGN**

408.982.8403
Mike.Saign@nrmk.com
CA RE LIC #01706668

**JEFF
ARRILLAGA**

408.982.8478
Jeff.Arrillaga@nrmk.com
CA RE LIC #00935379



is a **30-acre premier R&D campus** located in the heart of the Silicon Valley. Conveniently situated adjacent to Highways 237 and 880, VTA light rail and the new Milpitas Bart Station, Park Point offers an optimal location for companies looking to **recruit and retain top Bay Area talent** from the East Bay, Peninsula, and South Bay markets.

Park Point comprises **±471,877 SF** in one two-story and two three-story steel-framed buildings designed to provide an **elegant solution to today's creative workplace needs** and can **accommodate additional tenancy of ±107,000 SF**. The remaining space at 135 N. McCarthy Boulevard is suitable for a variety of life science, office, lab, manufacturing, and warehouse functions, and ideally positioned in the middle of the campus with convenient access to the park's numerous onsite amenities. The project can also be expanded by ±100,000 to ±250,000 SF in a new building constructed to accommodate a business's specific needs.

Park Point's **light-filled interiors, expansive outdoor amenity areas, exclusive Flow Fitness Studio, and new onsite café** promote on-campus **work-life balance** with an emphasis on **creativity, collaboration, community, and wellness**, and eliminate the need for employees to leave the park. The project's **efficient and flexible floor plans, thoughtfully amenitized common areas, picturesque campus setting, and excellent location** make it a remarkable headquarters **opportunity and just a few reasons why opportunity abounds at Park Point.**



AVAILABLE FOR LEASE
135 N. McCarthy Blvd.
±64,784 - ±107,000 SF



MODERNIZED ENTRANCES



NEW LOBBY RENOVATIONS





PROJECT LIST



Presence

- ±64,784 - ±107,000 SF Available for Lease within ±30-Acre Campus
- Conveniently Located at the Intersection of Highways 237 & 880
- World Class Corporate Neighbors



Efficiency

- Large ±59,000 SF Floorplates for Optimized Utilization
- Expansive Outdoor Collaboration and Amenity Areas
- Sinuous Walking/Jogging/Biking Trails Weave Through 30 Acres of Rolling Parklands



Identity

- Reimagined Building Entries Promote Intuitive Wayfinding
- Recently Renovated Two-Story Lobbies Provide a Connection to the Outdoors & Feature Inspiring Contemporary Design
- Prominent Building Signage and Branding Opportunities
- Modern Steel & Glass Building Construction Profile



Functionality

- Highly Flexible for Life Science, Office, R&D and Manufacturing Uses
- 3,200 amps @ 277/480 Volt 3 Phase Power for 135 N. McCarthy
- 3.3/1,000 On-Site Parking
- Dock and Grade Level Loading



Sustainability

- New EV Charging Stations
- Drought Tolerant Campus Landscaping
- Plentiful Natural Light
- Onsite Bike Parking



Amenities

- State-of-the-Art Flow Fitness Studio with Spacious Locker Rooms & Showers
- Onsite Basketball, Pickleball & Volleyball Courts
- New Onsite Café with Lush Park Views
- Outdoor Café & Lounge Seating, Ping Pong, BBQ & Picnic Patios
- Trellised Outdoor Workrooms & Redwood Grove with Social Fire Pit Terraces
- Walking Distance to Over 50 Restaurants, Retail, Service and Hotel Amenities

A wide-angle photograph of a modern outdoor workspace. The foreground is a paved patio with a grey and white checkered tile pattern. In the center, there is a seating area with several light blue armchairs and a bright red square coffee table. To the left, there is a wooden deck with white and wood benches. In the background, a large, modern building with a glass facade and a stone wall with a central opening is visible. The sky is blue with scattered white clouds.

**4+ ACRE FRESH AIR WORKSPACE AND
AMENITIZED PARK ENVIRONMENT**



EXPANSIVE OUTDOOR AMENITIES ENRICH WORK AND LIFE CONNECTIVITY



NEW FITNESS + WELLNESS CENTER INTEGRATED WITH CAMPUS PARK

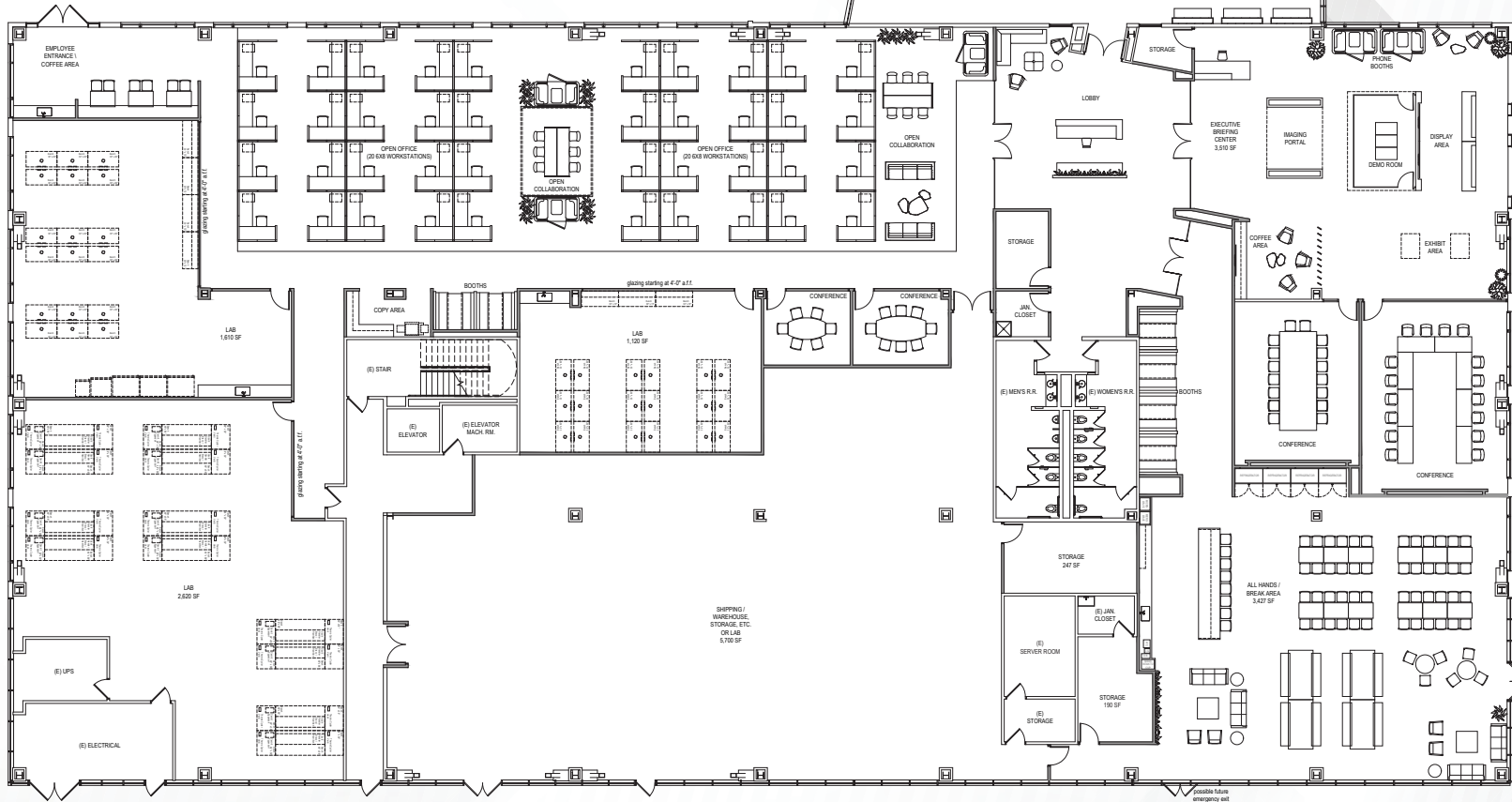
135 N. MCCARTHY
FIRST FLOOR | NORTH SIDE
±10,815 RSF



HYPOTHETICAL TEST FIT SUMMARY

20	6'X8' Workstations	4	Conference Rooms	6	Furniture Phone Booths	1	Storage Rooms
66	Benching Workstations	3	Open Collaboration Areas	1	Coffee Area	1	Copy Area

135 N. MCCARTHY
FIRST FLOOR | SOUTH SIDE
±30,960 RSF



HYPOTHETICAL TEST FIT SUMMARY

OFFICE AREA

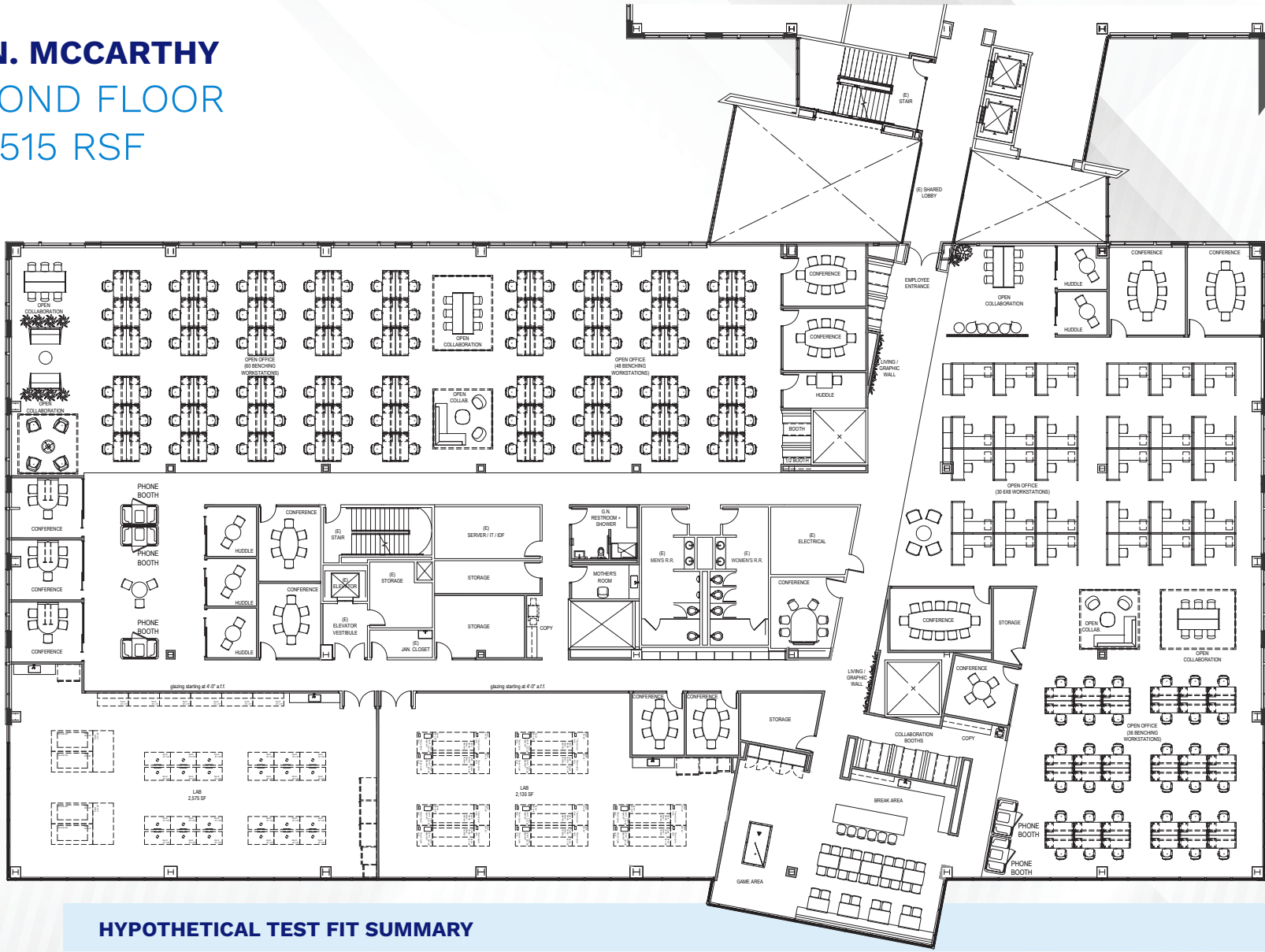
40	6'X8' Workstations
2	Conference Rooms
2	Open Collaboration Areas
1	Copy Area
1	Employee Entrance / Coffee Area

3	Labs
1	Shipping / Warehouse / Storage, etc
1	Server Room
4	Storage Rooms

EXECUTIVE BRIEFING AREA

2	Conference Rooms	1	Display Area
2	Furniture Phone Booths	1	Exhibit Area
1	Coffee Area	1	All Hands Break Area

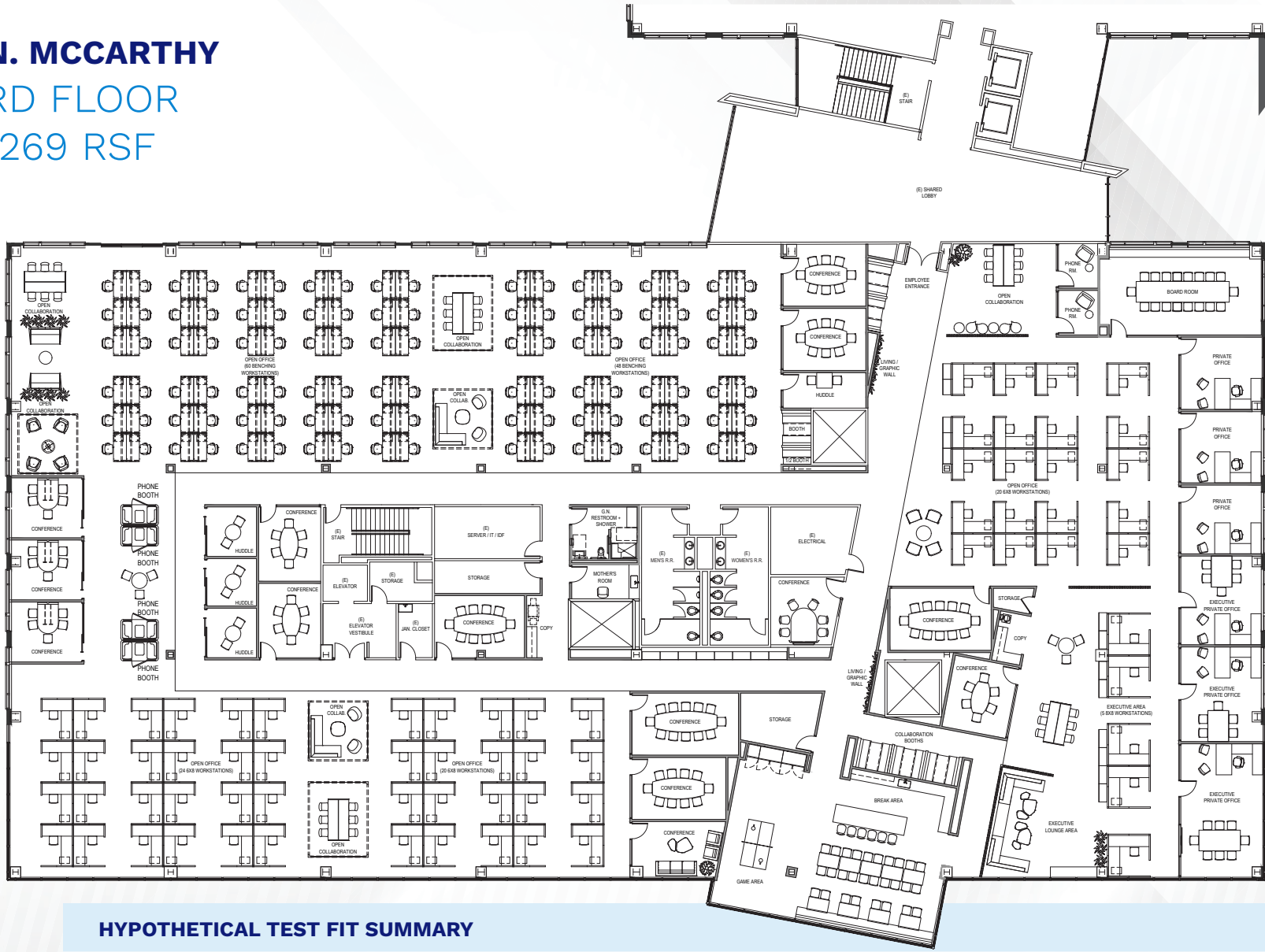
135 N. MCCARTHY
SECOND FLOOR
±32,515 RSF



HYPOTHETICAL TEST FIT SUMMARY

30	6'X8' Workstations	1	Break Room / Game Area	1	Mother's Room
144	Benching Workstations	2	Labs	1	All Gender + Shower
14	Conference Rooms	5	Storage Rooms	5	Open Collaboration Areas
6	Huddle Rooms	2	Copy Areas		
5	Furniture Phone Booths	1	MDF		

135 N. MCCARTHY
THIRD FLOOR
±32,269 RSF



HYPOTHETICAL TEST FIT SUMMARY

5	8'X8' Workstations	1	Board Room	4	Furniture Phone Booths	1	MDF
60	6'X8' Workstations	13	Conference Rooms	1	Break Room / Game Area	1	Mother's Room
108	Benching Workstations	4	Huddle Rooms	4	Storage Rooms	1	All Gender + Shower
3	Executive Private Offices	2	Phone Rooms	2	Copy Area	7	Open Collaboration Areas
3	Standard Private Offices						



MILPITAS

SANTA CLARA

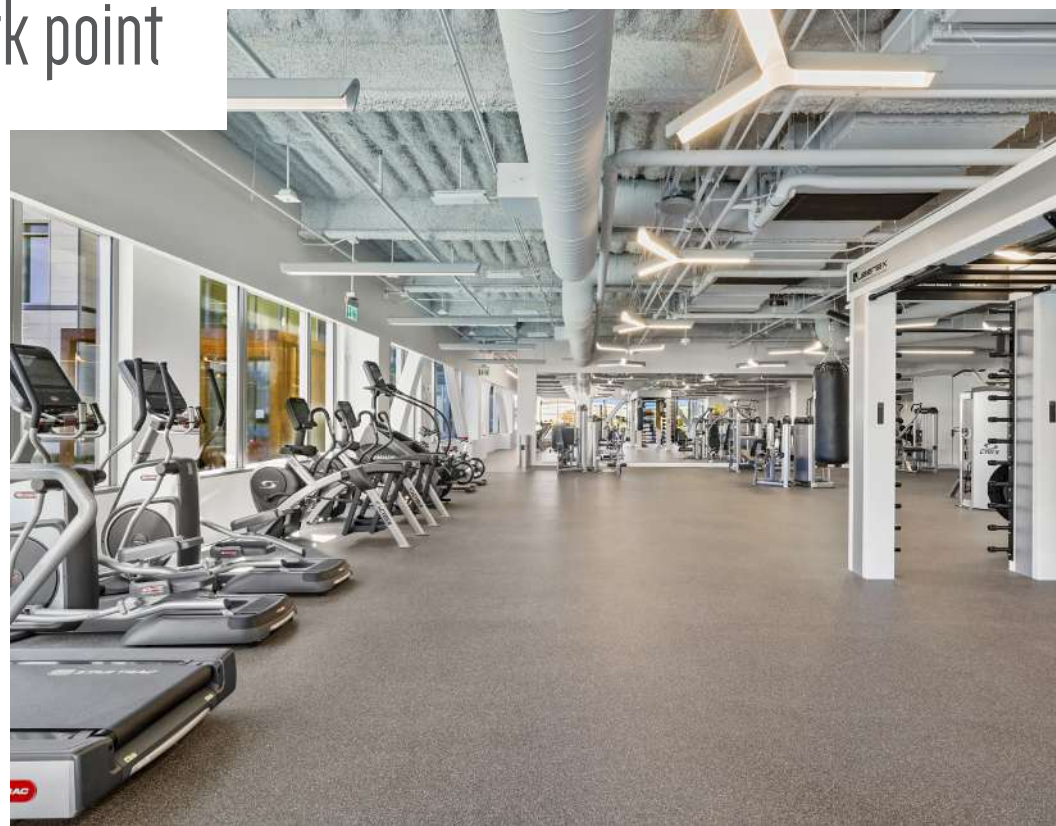
SAN JOSE

SUNNYVALE

MILPITAS STATION

BERRYESSA STATION

		LIGHT RAIL
		ACE
		CALTRAIN
		BART



AMENITIES

MILPITAS SQUARE

RESTAURANTS & CAFES

85c Bakery Cafe
Anjappar Chettinad Indian
Fantasia Coffee & Tea
Loving Hut
Mayflower Seafood
Pepper Lunch USA
QQ Noodle
Sizzling Stone
Thai Café Restaurant

HOTELS

Crowne Plaza San Jose
Hampton Inn Milpitas

BANKS

CTBC Bank
East West Bank
EverTrust Bank

MCCARTHY RANCH

RESTAURANTS & CAFES

Banana Leaf
Blank Angus Steakhouse
Dishdash Grill
In-N-Out Burger
McDonald's
Starbucks
Shabuya
Sushi King
The Green Barn
Togo's

HOTELS

Extended Stay America
Hilton Garden Inn
Larkspur Landing

RETAIL

Ashley Home Store
AT&T, Verizon, T-Mobile
Best Buy
Dollar Tree
Mattress Firm
PetSmart
Ross Dress for Less
Wal-Mart

BANKS

Bank of America
Charles Schwab
Wells Fargo

@first

RESTAURANTS & CAFES

Coffee Bean & Tea Leaf
Chick-fil-A
Chipotle Mexican Grill
Fish's Wild Fish Grill
Five Guys
Panda Express
Panera Bread
Premier Pizza
Rok Steakhouse & Grill
SAJJ Falafel

HOTEL

Courtyard San Jose

RETAIL

CVS
Target

BANKS

Chase
Fidelity
Union Bank





park point



**SHAWN
KELLENBERGER**

408.987.4170
Shawn.Kellenberger@nmrk.com
RE LIC #01706215

**MIKE
SAIGN**

408.982.8403
Mike.Saign@nmrk.com
CA RE LIC #01706668

**JEFF
ARRILLAGA**

408.982.8478
Jeff.Arrillaga@nmrk.com
CA RE LIC #00935379

NEWMARK

The distributor of this communication is performing acts for which a real estate license is required. The information contained herein has been obtained from sources deemed reliable but has not been verified and no guarantee, warranty or representation, either express or implied, is made with respect to such information. Terms of sale or lease and availability are subject to change or withdrawal without notice. 19-0298 • 09/23

3055 OLIN AVENUE, SUITE 2200, SAN JOSE, CA 95128