



ONCOLOGY

ONCOLOGY

HEALTH

MATERNITY

CARDIOLOGY

TESTING

370



ONCOLOGY

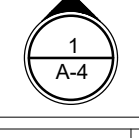
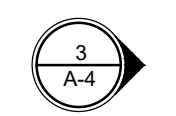
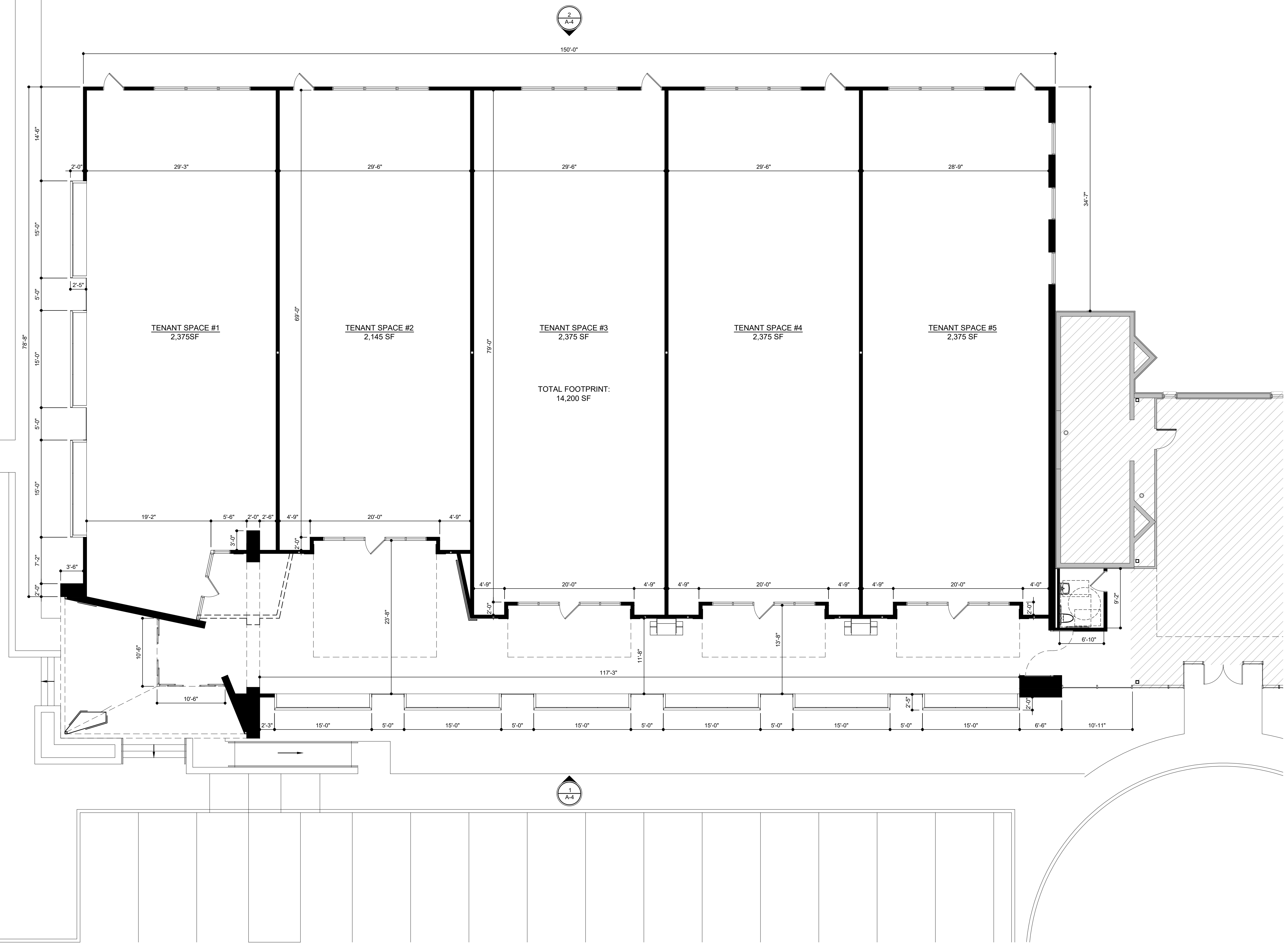
HEALTH

MATERNITY

CARDIOLOGY

TESTING

370



#	Description	Date

SUBMISSION / REVISION LOG

PLANNING BOARD - 2023.03.07

**SPARTA MEDICAL
CAMPUS
EXPANSION**

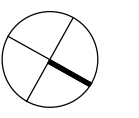
SPARTA, NEW JERSEY

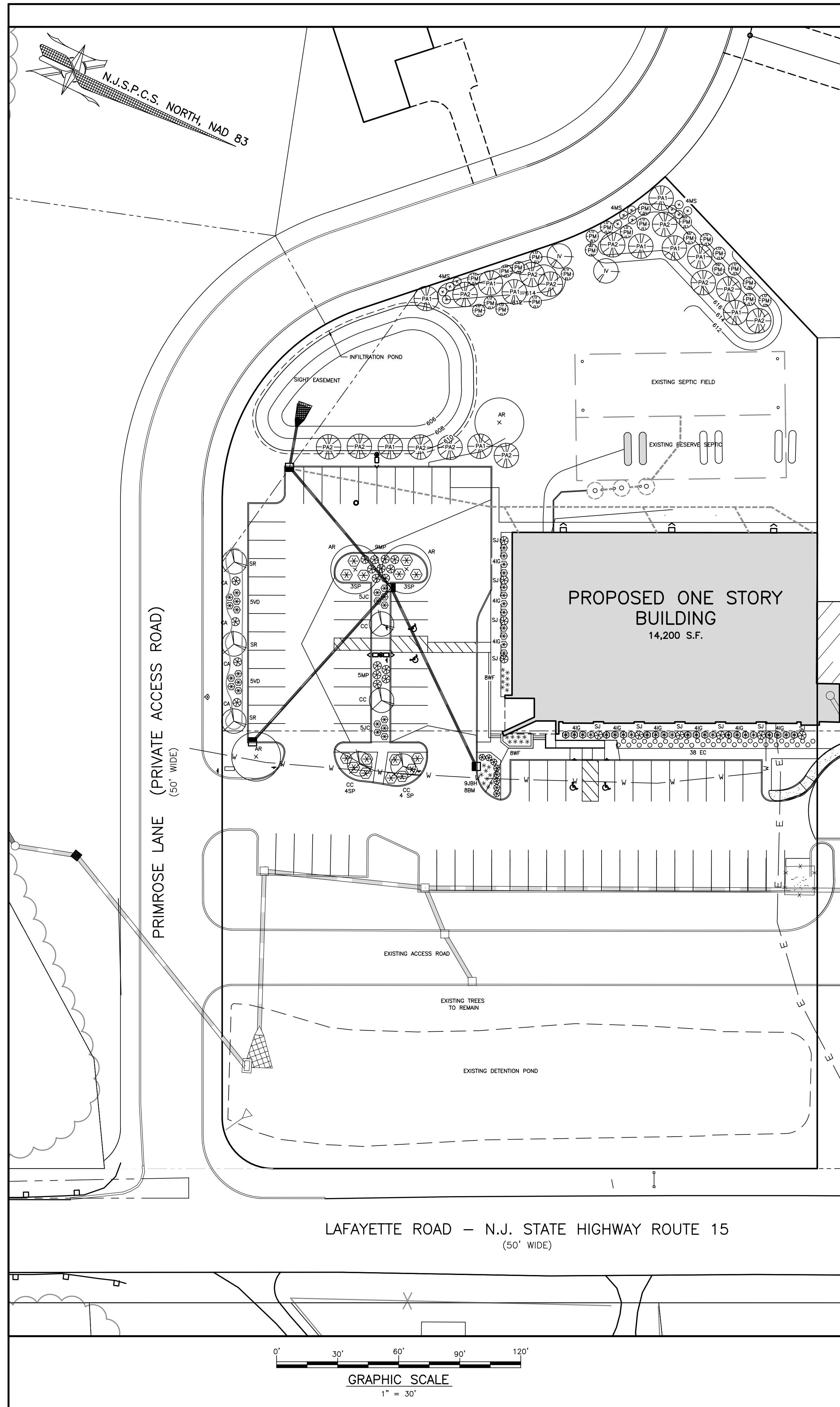
SEAL AND SIGNATURE

1ST FLOOR PLAN

Project Number 25-3027
Drawn by CW

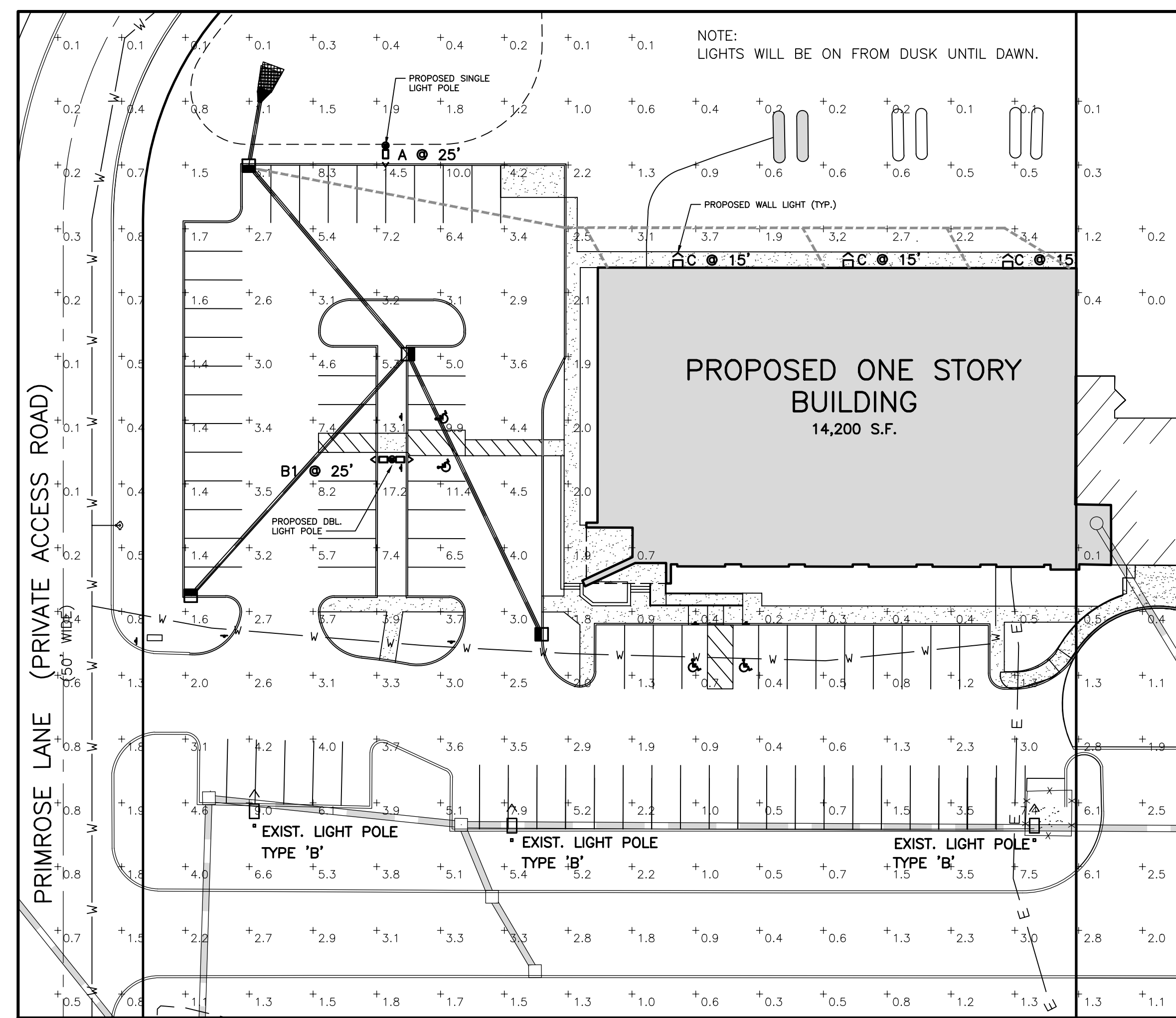
A-1



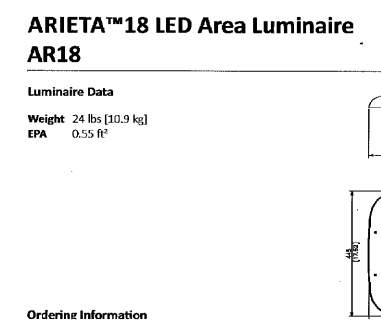


PLANT SCHEDULE

SYMBOL	QUANTITY	BOTANICAL NAME	COMMON NAME	SIZE AT TIME OF PLANTING	ROOT FORM
AR	4	ACER RUBRUM	RED MAPLE	2 1/2"-3" CAL	B&B
BM	13	BUXUS MICROPHYLLA 'WINTERGREEN'	WINTERGREEN BOXWOOD	24"-33" HT	B&B
BM	8	BUXUS MICROPHYLLA var JAPONICA	JAPANESE LITTLELEAF BOXWOOD	24"-30" HT	B&B
CA	4	CLETHRA ALNIFOLIA 'RUBY SPICE'	RUBY SPICE SUMMERSWEET	24"-30" HT	CONT.
CC	4	CIRCUS CANADENSIS	EASTERN REDBUD	8'-10" HT	B&B
EC	38	ERICA CARNEA 'KRAMERS RED'	KRAMERS ROTHE HEATH	8" HT	CONT.
IG	36	ILEX GLABRA 'SHAMROCK'	SHAMROCK INKBERRY HOLLY	36"-42" HT	B&B
IV	2	ILEX VERTICILLATA	WINTERBERRY HOLLY	36"-42" HT.	B&B
JBH	9	JUNIPERUS 'BAR HARBOR'	BAR HARBOR JUNIPER	12" SPRD	1 GAL CONT
JC	10	JUNIPERUS CHINENSIS	CHINESE JUNIPER	18"-24" HT	CONT.
MP	14	MYRICA PENNSYLVANICA	NORTHERN BAYBERRY	30"-36" HT	CONT.
MP	14	MYRICA PENNSYLVANICA	NORTHERN BAYBERRY	30"-42" HT	B&B
MS	12	MISCANTHUS SINENSIS 'GRACILLIMUS'	MAIDEN GRASS	24"-30" HT	CONT.
PA1	10	PICEA ABIES	NORWAY SPRUCE	8'-10" HT	B&B
PA2	13	PICEA ABIES	NORWAY SPRUCE	4'-6" HT	B&B
PM	24	PINUS MUGO	MUGO PINE	30"-36" HT	B&B
SJ	10	SPIREA JAPONICA 'DBL PLAY PINK'	JAPANESE SPIREA DOUBLE PLAY PINK	18"-24" HT	CONT.
SR	3	SYRINGA RETICULATA	JAPANESE TREE LILAC	6'-8"	B&B
VD	10	VIBURNUM DENTATUM 'AUTUMN JAZZ'	AUTUMN JAZZ ARROWWOOD VIBURNUM	36"-42" HT.	B&B
WF	16	WEIGILA FLORIDA 'BOKRASPMW'	SPILLED WINE WEIGILA	12"-18" HT	CONT.



PROPOSED LIGHTING PLAN
WITH FOOTCANDLE ILLUMINATION VALUES
1" = 30'



LIGHTING DESIGN PROVIDED BY SPRECTRO WIRETEC INC

Symbol	Label	QTY	Manufacturer	Catalog	Description	Number Lamps	Lamp Output	LLF	Input Power
A	A	1	Leotek Electronics USA LLC	AR18-96N-MV-NW-3-XX-400 mounted on SSS-25-4-DDB	Brown formed aluminum housing, clear plastic optics, no lens enclosure	1	40054	0.95	299.943
B	B	3	Leotek Electronics USA LLC	AR18-96N-MV-NW-5-XX-400 mounted on SSS-25-4-DDB	Brown formed aluminum housing, clear plastic optics, no lens enclosure	1	40606	0.95	299.912
B1	B1	1	Leotek Electronics USA LLC	AR18-96N-MV-NW-5-XX-400 mounted on SSS-25-4-DDB	Brown formed aluminum housing, clear plastic optics, no lens enclosure	1	40606	0.95	599.824
C	C	3	Leotek Electronics USA, LLC	ES1-24H-MV-NW-W-XX-700	Leotek Electronics USA, LLC - Outdoor wall mount luminaire. Catalog number: ES1-24H-MV-NW-W-XX-700	24	240	0.95	58.6

PLANTING NOTES

- ALL EXISTING TREES AND SHRUBS TO REMAIN SHALL BE PRUNED TO REMOVE DEAD OR DYING BRANCHES. SHRUBS AND TREES SHALL BE PRUNED IN ACCORDANCE WITH ACCEPTED HORTICULTURAL PRACTICES FOR THE SPECIE OF PLANT BEING PRUNED.
- THE CONTRACTOR SHALL VERIFY THE LOCATION OF ALL EXISTING UTILITIES PRIOR TO EXCAVATING FOR PLANTING WORK. CONTRACTOR MUST REQUEST FIELD LOCATIONS FROM THE VARIOUS UTILITY COMPANIES PRIOR TO BEGINNING THE WORK.
- THE CONTRACTOR SHALL COMPLY WITH ALL APPLICABLE CODES AND REGULATIONS, INCLUDING LOCAL ORDINANCES GOVERNING THE WORK.
- FINAL LOCATIONS FOR PLANTS SHALL BE APPROVED IN THE FIELD BY THE LANDSCAPE ARCHITECT AND ENGINEER AFTER STAKE OUT BY THE CONTRACTOR.
- PROVIDE AMENDED TOPSOIL BACKFILL FOR ALL NEWLY PLANTED MATERIAL. TOPSOIL FOR BACKFILL SHALL COMPLY WITH THE FOLLOWING SPECIFICATIONS: ORGANIC MATTER CONTENT - MIN. 5 PH RANGE - 5.0 TO 6.5 CLASSIFICATION - SANDY LOAM OR LOAM AGGREGATE - FREE OF STONES 1/2" OR GREATER
- BACKFILL MIXTURE FOR DECIDUOUS TREES AND SHRUBS SHALL BE AMENDED AS FOLLOWS: 1 PART APPROVED TOPSOIL TO 2 PARTS ROTTED LEAF COMPOST OR PEAT MOSS, THOROUGHLY MIXED.
- BACKFILL MIXTURE FOR EVERGREEN TREES AND SHRUBS SHALL BE AMENDED AS FOLLOWS: 1 PART APPROVED TOPSOIL TO 3 PARTS ROTTED LEAF COMPOST OR PEAT MOSS, THOROUGHLY MIXED.
- COMMERCIAL FERTILIZER SHALL BE ADDED TO THE BACKFILL MIXTURE IN COMPLIANCE WITH THE MANUFACTURER'S RECOMMENDATIONS. COMMERCIAL FERTILIZER FOR ALL TREES AND SHRUBS SHALL BE HIGH PHOSPHOROUS FERTILIZER WITH AN EQUIVALENT RATING OF 5 - 10 - 5 (NITROGEN, PHOSPHOROUS AND POTASSIUM).
- COMMERCIAL FERTILIZER SHALL BE ADDED TO THE BACKFILL MIXTURE IN COMPLIANCE WITH THE MANUFACTURER'S RECOMMENDATIONS. COMMERCIAL FERTILIZER FOR ALL TREES AND SHRUBS SHALL BE HIGH PHOSPHOROUS FERTILIZER WITH AN EQUIVALENT RATING OF 5 - 10 - 5 (NITROGEN, PHOSPHOROUS AND POTASSIUM).
- FOR EVERGREEN TREES AND SHRUBS TOPDRESS WITH A HIGH NITROGEN GRANULAR FERTILIZER EQUAL IN ACCORDANCE WITH MANUFACTURER'S RECOMMENDATIONS. FOR DECIDUOUS TREES AND SHRUBS, TOPDRESS WITH A HIGH PHOSPHOROUS GRANULAR FERTILIZER, SUCH AS 5 - 10 - 5, COMPLETE GARDEN FERTILIZER, IN ACCORDANCE WITH MANUFACTURER'S RECOMMENDATIONS.
- WHERE IRRIGATION IS NOT AVAILABLE, WATER HOLDING GEL CAPSULES, EQUAL TO "GELSAPES" BY VITERRA, INC., OR PLANT HEALTH CARE, INC. SHALL BE ADDED TO BACKFILL MIXTURE IN ACCORDANCE WITH THE MANUFACTURER'S SPECIFICATIONS.
- ALL PLANT MATERIAL SHALL BE THOROUGHLY WATERED IN DURING BACKFILLING AND AFTER PLANTING/MULCHING HAS BEEN COMPLETED.
- PLANT BEDS, HEDGES, GROUPINGS, ETC. SHALL BE UNIFORMLY MULCHED OVER THE ENTIRE BED AREA WITH 3" THICK DOUBLE SHREDDED OAK BARK MULCH, BLACK IN COLOR. PALLETTE MULCH OR OTHER SHADDED WOOD MULCH IS NOT ACCEPTABLE. PRIOR TO INSTALLATION OF MULCH, SUBMIT A SAMPLE TO THE LANDSCAPE ARCHITECT ALONG WITH SOURCE AND LOCATION OF ORIGIN AND PHONE NUMBER OF THE SUPPLIER. NO MULCH SHALL BE INSTALLED WITHOUT PRIOR APPROVAL BY THE LANDSCAPE ARCHITECT.
- ALL BED LINES SHALL BE SMOOTHLY AND UNIFORMLY DEFINED WITH A GARDEN SPADE.
- ALL PLANT MATERIAL SHALL BE SUBJECT TO INSPECTION BY THE LANDSCAPE ARCHITECT AT HIS SOURCE, PRIOR TO SHIPMENT TO THE JOBSITE. ALL SPECIMEN ORNAMENTALS, DECIDUOUS TREES, EVERGREEN TREES SHALL BE INSPECTED BY THE LANDSCAPE CONTRACTOR AND THE LANDSCAPE ARCHITECT FOR COMPLIANCE WITH THE PLANT LIST. APPROVED PLANTS SHALL BE TAGGED WITH LOCKING SEALS WHICH WILL BE SUBMITTED TO THE LANDSCAPE ARCHITECT AFTER DELIVERY/PLANTING IN ORDER FOR PAYMENT TO BE MADE TO THE CONTRACTOR.
- ALL PLANT MATERIAL SHALL BE HIGH QUALITY, SPECIMEN GRADE MATERIAL, IN VIGOROUS, HEALTHY CONDITION. REFERENCED STANDARD FOR PLANT MATERIAL SHALL BE: AMERICAN STANDARD FOR NURSERY STOCK, PUBLISHED BY THE AMERICAN ASSOCIATION OF NURSERYMEN, WASHINGTON, D.C.
- PRIOR TO INSTALLATION OF ALL PLANT MATERIAL, THE RESULTS OF PHYSICAL & CHEMICAL TESTS OF THE SUBSOIL & TOPSOIL SHALL BE SUBMITTED TO THE TOWN ENGINEER TO ASSESS SOIL COMPOSITION AND IF THE pH IS ACCEPTABLE FOR THE PROPOSED PLANTS.
- TREES AND SHRUBS SHALL BE PLANTED ONLY WHEN THE SOIL IS FROST-FREE AND FRIABLE.
- ALL TREES SHALL BE PLACED IN A PROPER MANNER AND IN GOOD GRADE OF BACKFILL IN ACCORDANCE WITH ACCEPTABLE HORTICULTURAL STANDARDS. ALL DECIDUOUS SHADE TREES SHALL HAVE A MINIMUM CALIPER OF 2 1/2" AT TIME OF PLANTING.
- LANDSCAPING IN THE AREA OF CUTS AND FILLS AND/OR TERRACES SHALL BE SUFFICIENT TO PREVENT EROSION, AND ALL ROADWAY SIDE SLOPES GREATER THAN 3:1 SHALL BE PLANTED WITH GROUND COVERS APPROPRIATE FOR THE PURPOSE AND SOIL CONDITIONS, WATER AVAILABILITY, AND ENVIRONMENT.
- ALL PLANTINGS SHALL BE PLANTED IN RECOGNIZED SPRING AND FALL PLANTING SEASONS.

DATE REVISION

CIVIL ENGINEERS
LAND SURVEYORS
LANDSCAPE ARCHITECTS
PLANNERS



PROJECT NO.: SP-606
CONTOUR INT.: 2'
SCALE: 1" = 30'
DATE: 03/15/2023
SHEET 5 OF 6

DYKSTRA ASSOCIATES, PC
11 LAWRENCE ROAD, SUITE 1
NEWTON, NJ 07860
(973) 579-2177

JASON A. DUNN
LICENSED LANDSCAPE ARCHITECT
N.J. LIC. No. 331005834
PROFESSIONAL PLANNER

SPARTA BUSINESS CAMPUS
TAX LOT 12 BLOCK 11002
TAX MAP SHEET 11.01
SPARTA TOWNSHIP, SUSSEX COUNTY, N.J.

LANDSCAPE AND LIGHTING