



COMMERCIAL
REAL ESTATE
the sign of a profitable property

INDUSTRIAL WAREHOUSE FOR **SALE** OR **LEASE** IN **DTLA OPPORTUNITY ZONE**

1204 Paloma St., Los Angeles, CA 90021



STEFAN SIEGEL

(818) 697-9372 | stefan@illicre.com
DRE#01356621

MICHAEL SHARON

(818) 572-4050 | msharon@illicre.com
DRE#01495419





TABLE OF CONTENTS

Executive Summary	01
Property Photos	02
Aerial Map	07
Location Overview	08
Demographic Summary	09

EXECUTIVE SUMMARY

This industrial warehouse in Downtown Los Angeles offers approximately 3,928 square feet of space (7,800 square feet including mezzanine) on a 5,565 square foot lot. Located within an Opportunity Zone, this property is ideal for various industrial uses, including cannabis operations. Built in 1997 with tilt-up concrete construction, the facility features a 25-foot clearance height, 400 AMPS of 3-phase power (expandable to 1,200 AMPS), a 1-inch gas line, fire sprinklers, and a 25-ton HVAC system.

Additional highlights include rear gated parking, multiple restrooms, and proximity to major freeways (10, 5, 110, 101), public transportation, and amenities in the Fashion District and Wholesale Produce Market area.

This property is ideal for investors or businesses looking to capitalize on the Opportunity Zone incentives, whether for general industrial use or cannabis operations. The facility's robust infrastructure, combined with its prime location in a bustling commercial area, offers significant potential for growth and profitability.

LEASE
RATE

\$1.60 PSF MG

SALE
PRICE

\$2,200,000

PROPERTY DETAILS

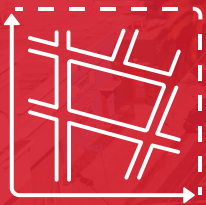
Address	1204 Paloma St., Los Angeles, CA 90021
APN	5132-016-047
Building area	±3,928 SF (7,800 SF inclusive of Mezzanine space)
Site area	±0.128 AC / ±5,565 SF
Year Built/ Renovated	1997
Zoning	LA-M2
Use	Industrial



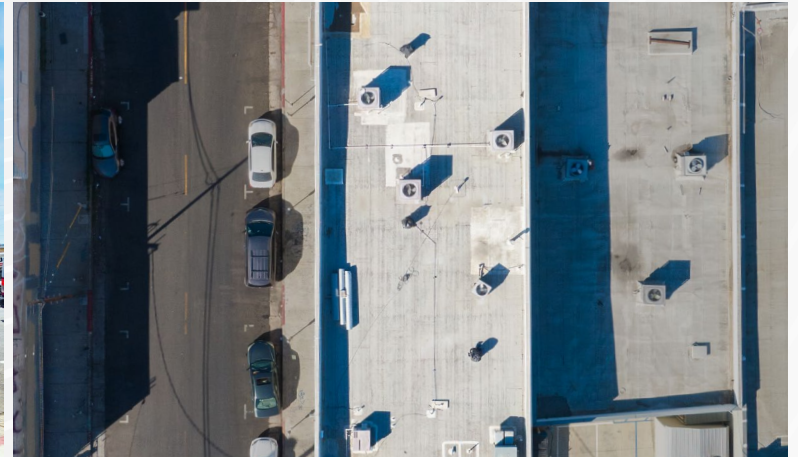
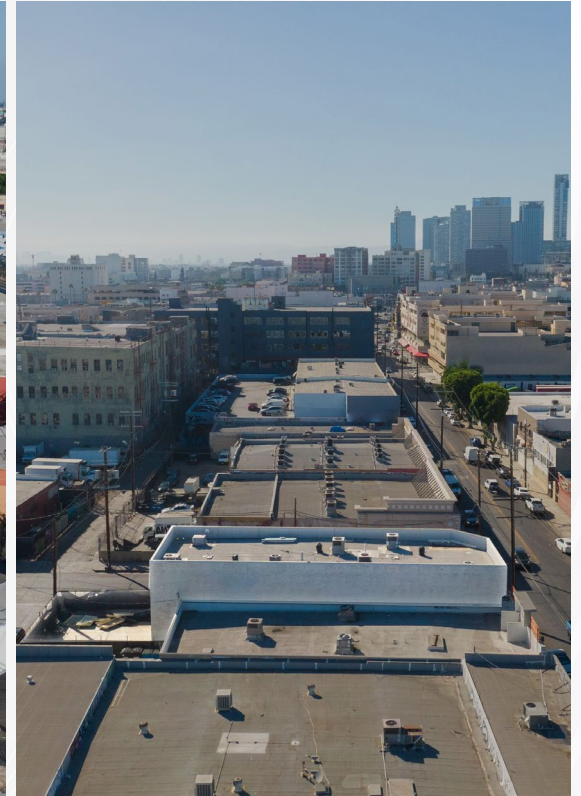
PROPERTY PHOTOS



RENTABLE AREA
±3,928 SF



SITE AREA
±0.128 AC / ±5,565 SF



INDUSTRIAL WAREHOUSE FOR SALE IN DTLA







DOWNTOWN LOS ANGELES

FLOWER MARKET

ARTS DISTRICT

FASHION DISTRICT

AVAILABLE

ROW
DTLA

CITY OF LOS ANGELES
SIXTH STREET VIADUCT



AERIAL MAP

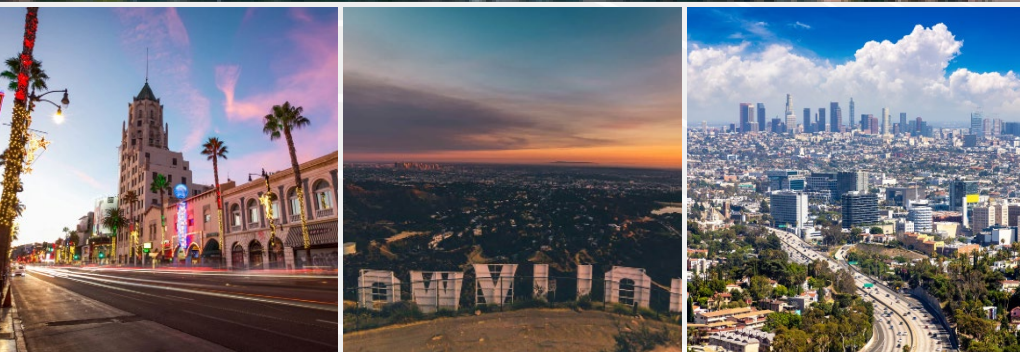
LOCATION OVERVIEW

Los Angeles County

Los Angeles County is well located on the Southern Coast of California and covers 4,061 square miles, including the San Clemente and Santa Catalina islands. Home to approximately 9.9 million residents, it is the most heavily populated county in the U.S. and is only exceeded by eight states.

The county includes approximately 88 vibrant cities hosting more than 244,000 business establishments, the greatest concentration in the state, with more minority and womenowned businesses than any other in the U.S., and is the nation's top international trade and manufacturing center. Los Angeles County has one of the most educated labor pools in the country. Its well-trained workforce of more than 4.7 million people includes over 1.5 million college graduates. With a Gross Domestic Product (GDP) of approximately \$750 billion, if Los Angeles County were its own nation, its economy would be the 19th largest in the world.

Los Angeles is recognized worldwide as a leader in entertainment, health sciences, business services, aerospace, and international trade. The Los Angeles area is so large and diverse, it has something for everyone. While Hollywood and the beach culture are most often associated with the collective image of Los Angeles, it also boasts an abundance of museums, some of the world's best restaurants and hotels, and access to nearly any type of recreational activity one can imagine.



DEMOGRAPHIC SUMMARY

POPULATION	1 MILE	3 MILE	5 MILE
2030 Projection	32,475	452,195	1,197,651
2025 Estimate	32,787	454,462	1,209,842
2020 Census	33,996	462,408	1,257,467
Hispanic Origin	17,638	305,190	826,654
Daytime Population	27,880	370,550	984,185

2025 TRAFFIC COUNTS	CENTRAL AVE	101 FREEWAY
Cars per Day	±25,993	±278,000

DEMOGRAPHIC SUMMARY

HOUSEHOLDS	1 MILE	3 MILE	5 MILE
Number of Household	11,737	152,019	396,357
Average Household Size	2.10	2.70	2.80
Average Household Income	\$81,638	\$77,304	\$83,208
Median Household Income	\$46,115	\$52,499	\$60,131

BUSINESSES	# OF BUSINESSES	# EMPLOYEES	# EMP / BUS
1-Mile Radius	6,992	44,321	6



COMMERCIAL
REAL ESTATE



STEFAN SIEGEL
Vice President

(818) 697-9372 | stefan@illicre.com
DRE#01356621



MICHAEL SHARON
Senior Vice President

(818) 572-4050 | msharon@illicre.com
DRE#01495419



THE INFORMATION CONTAINED IN THIS MARKETING BROCHURE IS PROPRIETARY AND STRICTLY CONFIDENTIAL. IT IS INTENDED TO BE REVIEWED ONLY BY THE PARTY RECEIVING IT FROM ILLI COMMERCIAL REAL ESTATE AND SHOULD NOT BE MADE AVAILABLE TO ANY OTHER PERSON OR ENTITY WITHOUT THE WRITTEN CONSENT OF ILLI COMMERCIAL REAL ESTATE OR THE OWNER OF THE PROPERTY ("OWNER"). THIS MARKETING BROCHURE HAS BEEN PREPARED TO PROVIDE SUMMARY, UNVERIFIED INFORMATION TO PROSPECTIVE TENANTS AND PURCHASERS, AND TO ESTABLISH ONLY A PRELIMINARY LEVEL OF INTEREST IN THE SUBJECT PROPERTY. THE INFORMATION CONTAINED HEREIN IS PROVIDED FOR INFORMATIONAL PURPOSES ONLY AND WITHOUT REPRESENTATION OR WARRANTY OF ANY KIND FROM THE OWNER, ILLI COMMERCIAL REAL ESTATE OR OTHERWISE. SUCH INFORMATION IS NOT A SUBSTITUTE FOR A THOROUGH DUE DILIGENCE INVESTIGATION. NEITHER ILLI COMMERCIAL REAL ESTATE NOR OWNER HAS MADE ANY INVESTIGATION, AND NEITHER MAKES ANY WARRANTY OR REPRESENTATION, WITH RESPECT TO THE INCOME OR EXPENSES FOR THE SUBJECT PROPERTY, THE FUTURE PROJECTED FINANCIAL PERFORMANCE OF THE PROPERTY, THE SIZE AND SQUARE FOOTAGE OF THE PROPERTY AND IMPROVEMENTS, THE PRESENCE OR ABSENCE OF CONTAMINATING SUBSTANCES, PCB'S OR ASBESTOS, THE COMPLIANCE WITH STATE AND FEDERAL REGULATIONS, THE PHYSICAL CONDITION OF THE IMPROVEMENTS THEREON, OR THE FINANCIAL CONDITION OR BUSINESS PROSPECTS OF ANY TENANT, OR ANY TENANT'S PLANS OR INTENTIONS TO CONTINUE ITS OCCUPANCY OF THE SUBJECT PROPERTY. NEITHER ILLI COMMERCIAL REAL ESTATE NOR OWNER HAS VERIFIED, AND WILL NOT VERIFY, ANY OF THE INFORMATION CONTAINED HEREIN, NOR HAS ILLI COMMERCIAL REAL ESTATE OR OWNER CONDUCTED ANY INVESTIGATION REGARDING THESE MATTERS. NO REPRESENTATION OR WARRANTY WHATSOEVER IS MADE BY OWNER OR ILLI COMMERCIAL REAL ESTATE REGARDING THE ACCURACY OR COMPLETENESS OF THE INFORMATION PROVIDED. ALL POTENTIAL BUYERS AND TENANTS MAKE AND RELY ON THEIR OWN INDEPENDENT INVESTIGATION AND TAKE APPROPRIATE MEASURES TO VERIFY ALL INFORMATION SET FORTH HEREIN. THE SUBJECT PROPERTY CONTAINS OPERATING BUSINESSES. DO NOT DISTURB TENANTS OR SPEAK WITH STAFF OF BUSINESSES ABOUT THIS OFFERING

5945 CANOGA AVENUE | WOODLAND HILLS, CA 91367 | 818.501.2212/PHONE | www.illicre.com | DRE #01834124