



## 139 S Main St

139 S Main St, Fall River, MA 02721



### Jim Sabra

Equity Commercial Real Estate, Inc.  
82 Sanford Rd, Westport, MA 02790  
[jsabra@equityrealestateinc.com](mailto:jsabra@equityrealestateinc.com)  
(508) 951-7994

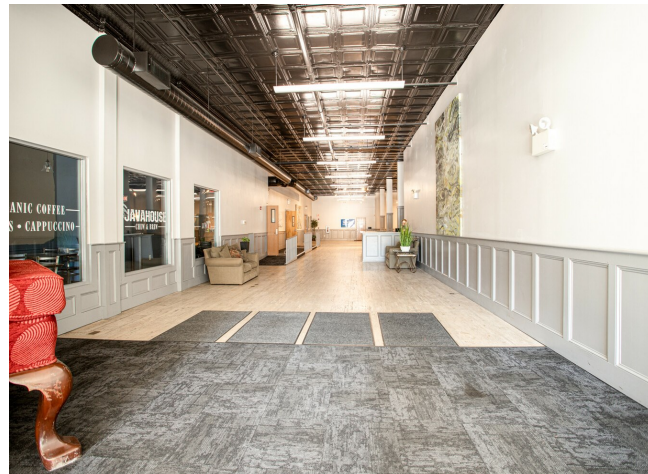


# 139 S Main St

\$14.00 /SF/YR

Great space located in the central business district of Fall River on the 2nd, 3rd, and 4th floor of the historical Cherry and Webb building. Multiple office spaces ready to lease. Easy access to Routes 195/79 and in close proximity to court house, medical centers, restaurants, government center, bus line, and the the anticipated rail. Ideal professional offices for financial/law/technical/education. Professionally managed building offers parking garage at \$40/pp/mo and full service elevator. Rents range from \$14-\$16/sf....

- Office/Professional Building/Well maintained/professionally managed
- Walking distance to restaurants and banks
- Located in the heart of downtown Fall River
- Close to anticipated train station
- Full service elevator/parking garage \$40/pp/mo



Rental Rate:	\$14.00 /SF/YR
Property Type:	Office
Property Subtype:	Office
Building Class:	C
Rentable Building Area:	75,000 SF
Year Built:	1919
Walk Score ®:	93 (Walker's Paradise)
Transit Score ®:	50 (Good Transit)
Rental Rate Mo:	\$1.17 /SF/MO

## 2nd Floor

1

Space Available	8,833 SF
Rental Rate	\$14.00 /SF/YR
Date Available	November 08, 2023
Service Type	Full Service
Space Type	Relet
Space Use	Office
Lease Term	Negotiable

## 3rd Floor

2

Space Available	4,565 SF
Rental Rate	\$14.00 /SF/YR
Date Available	November 08, 2023
Service Type	Full Service
Space Type	Relet
Space Use	Office
Lease Term	Negotiable

## 4th Floor

3

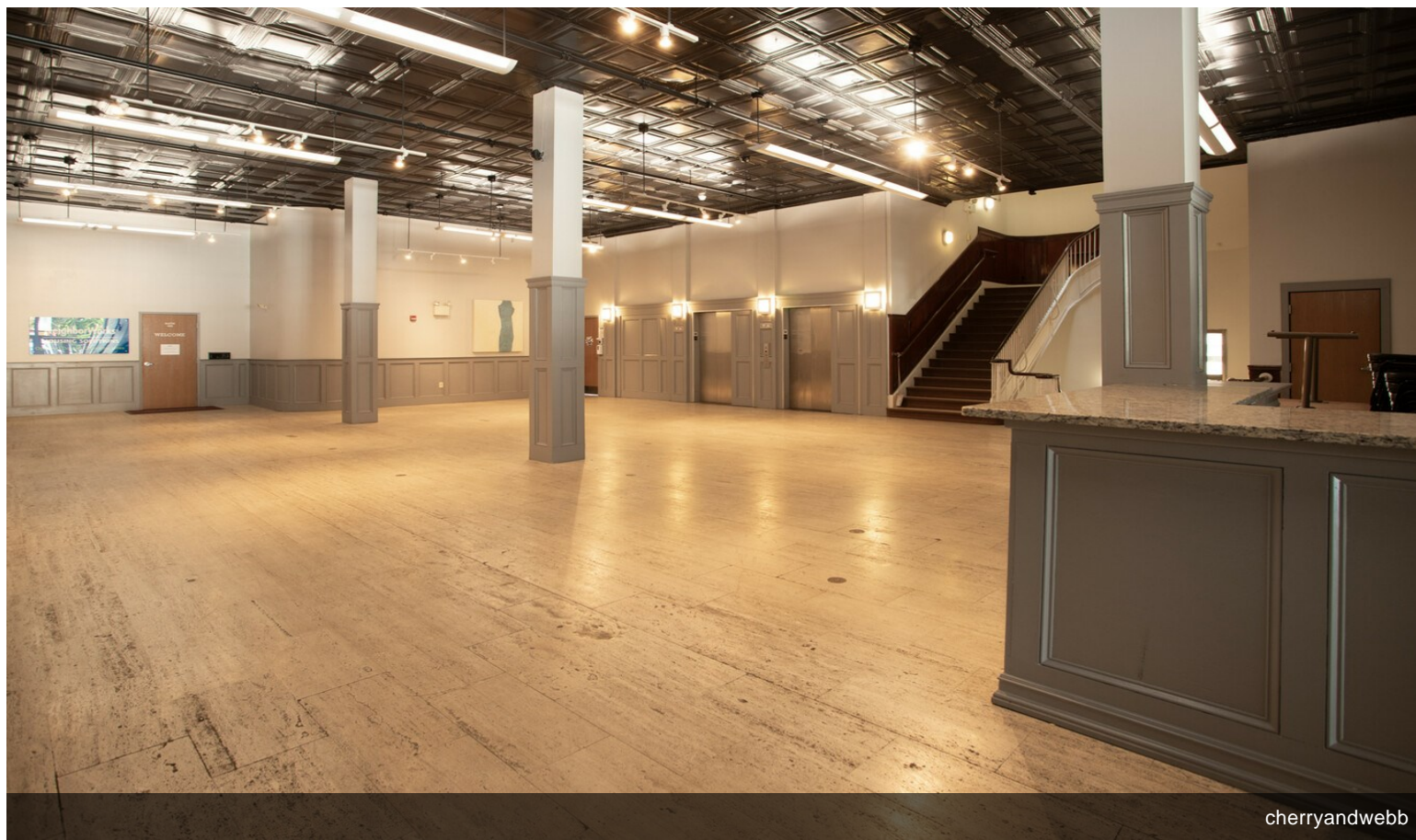
Space Available	6,480 SF
Rental Rate	\$14.00 /SF/YR
Date Available	November 08, 2023
Service Type	Full Service
Space Type	Relet
Space Use	Office
Lease Term	Negotiable



## 139 S Main St, Fall River, MA 02721

Great space located in the central business district of Fall River on the 2nd, 3rd, and 4th floor of the historical Cherry and Webb building. Multiple office spaces ready to lease. Easy access to Routes 195/79 and in close proximity to court house, medical centers, restaurants, government center, bus line, and the the anticipated rail. Ideal professional offices for financial/law/technical/education. Professionally managed building offers parking garage at \$40/pp/mo and full service elevator. Rents range from \$14-\$16/sf.

# Property Photos



cherryandwebb



CHERRYANDWEBB-42

# Property Photos

