

# SHORT TERM LEASE | ±3.94 Net Acres

1633 S CAMPUS AVENUE | ONTARIO, CA

**OUTDOOR  
STORAGE YARD**



For more information, please contact:

**Brad Yates, SIOR®**

brad.yates@streamrealty.com

T 949.285.2535

Lic. 01708615

**Stefan Pastor, SIOR®**

stefan.pastor@streamrealty.com

T 646.352.1113

Lic. 01903973

**Trevor Wright**

trevor.wright@streamrealty.com

T 909.456.0697

Lic. 02130999





# SHORT TERM LEASE | ±3.94 Net Acres

1633 S CAMPUS AVENUE | ONTARIO, CA

## PROPERTY FEATURES

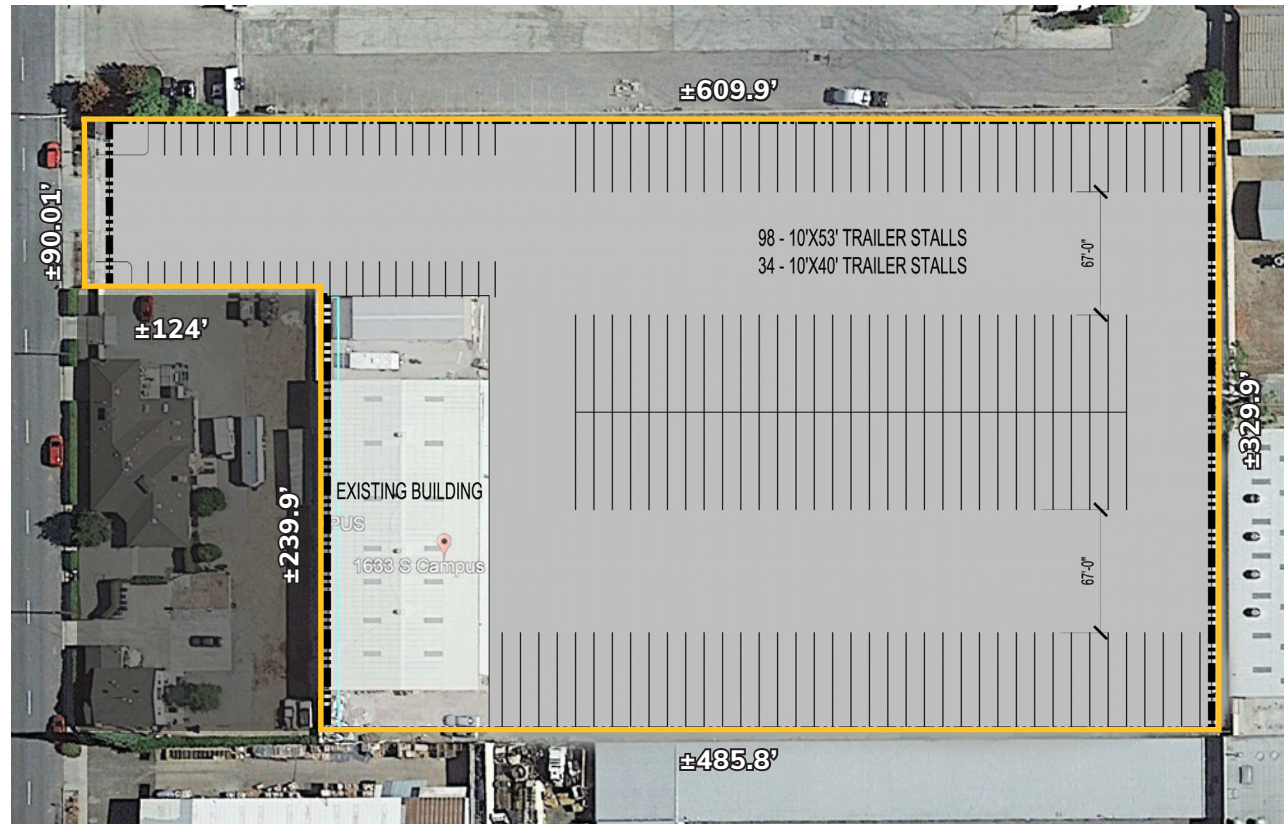
- » 3.94 Net Acres, 171,510 SF
- » ±13,660 SF Metal Warehouse
- » 18' Clear Height
- » One (1) oversized 20' x 30' Drive in Door
- » Utilities are to the site
- » 400 Amps Power
- » Secured/Gated Yard Area
- » Zoned Light Industrial
- » Renovations: Repaving of ±1 acre; New Gravel on remainder of yard ±2 acres



## TERM

- » 6 to 24 month lease term

## SITE AERIAL VIEW





# SHORT TERM LEASE | ±3.94 Net Acres

1633 S CAMPUS AVENUE | ONTARIO, CA



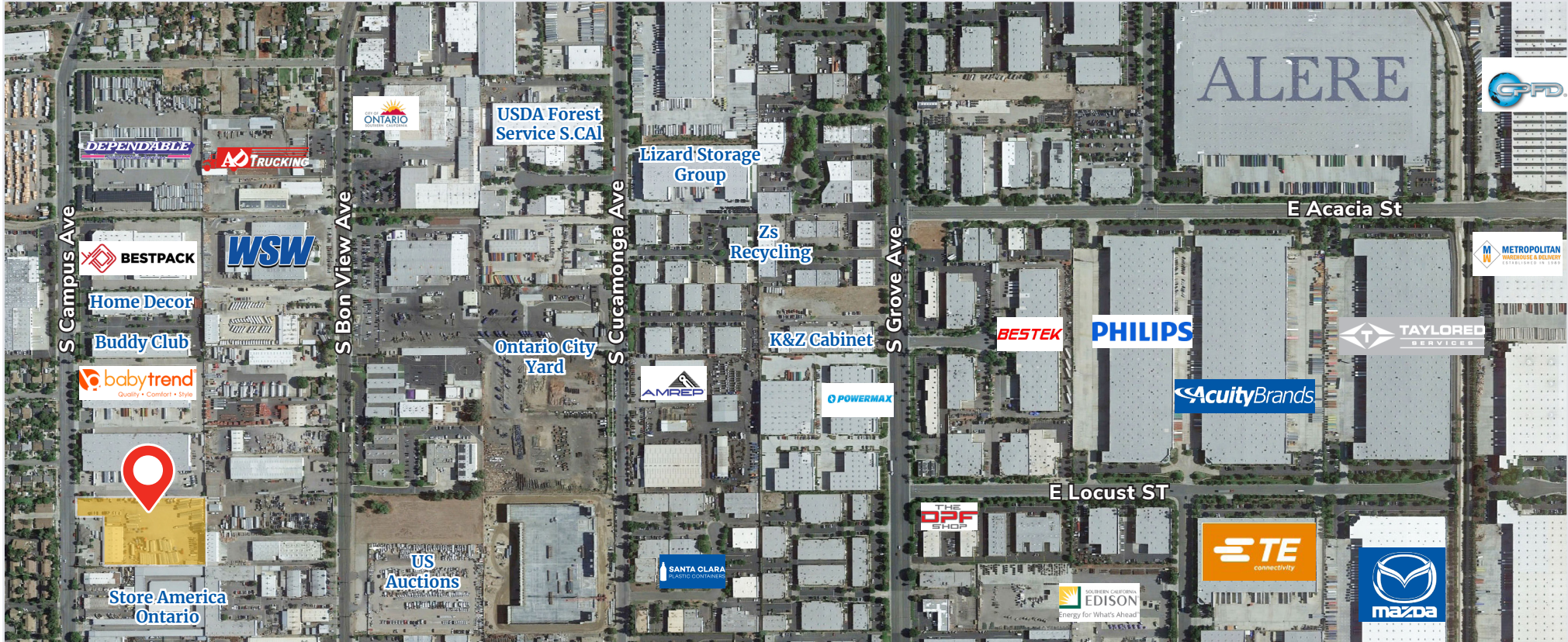
Copyright © 2023 Stream Realty Partners. All rights reserved. The information contained herein was obtained from sources believed reliable; however, Stream Realty Partners, L.P. make no guarantees, warranties or representations as to the completeness or accuracy thereof. The presentation of this property is submitted subject to errors, change of price, or conditions, prior sale or lease, or withdrawal without notice.





# SHORT TERM LEASE | ±3.94 Net Acres

1633 S CAMPUS AVENUE | ONTARIO, CA



For more information, please contact:

**Brad Yates, SIOR®**  
EXECUTIVE VICE PRESIDENT  
brad.yates@streamrealty.com  
T 949.285.2535  
Lic. 01708615

**Stefan Pastor, SIOR®**  
EXECUTIVE VICE PRESIDENT  
stefan.pastor@streamrealty.com  
T 646.352.1113  
Lic. 01903973

**Trevor Wright**  
VICE PRESIDENT  
trevor.wright@streamrealty.com  
T 909.456.0697  
Lic. 02130999

