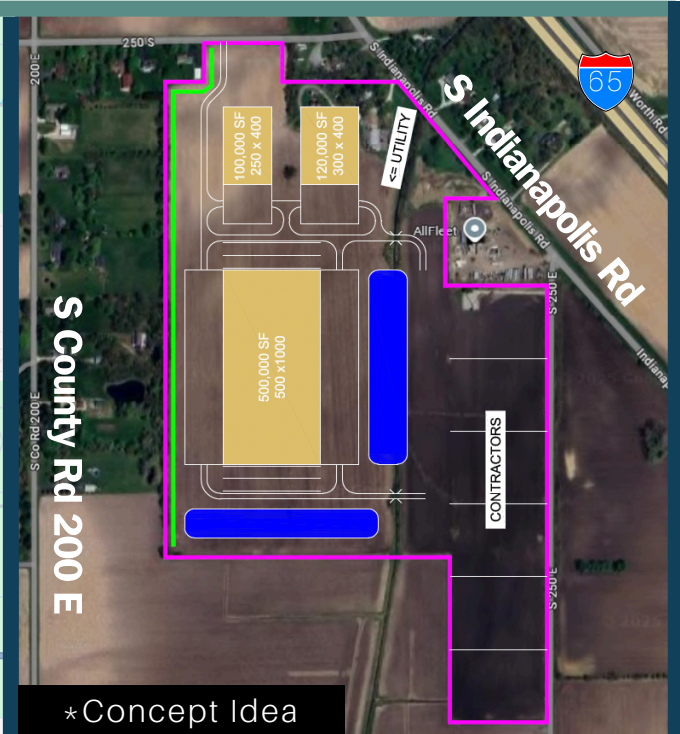
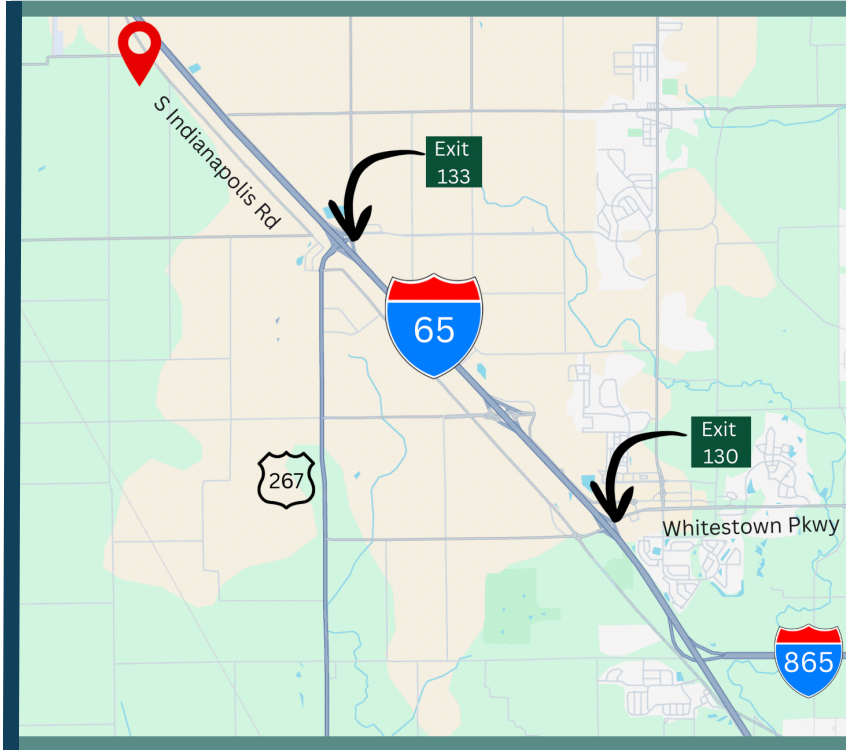


2550 S INDIANAPOLIS RD. LEBANON, IN 46052



INDUSTRIAL & FLEX OPPORTUNITY AT THE EDGE OF INDIANA'S LEAP INNOVATION CORRIDOR

- Will Sub-divide
- 120 Acres
- Strategic access to I-65 and multiple main corridors
- Proximity to LEAP Lebanon — Positioned to benefit from spillover demand from Indiana's 9,000+ acre innovation & manufacturing hub
- Over 50 major biotech, pharm, life sciences companies are located within ~30 miles of the district
- Workforce reach: the area draws on a regional labor pool of over 1 million within 60 minutes
- Indiana has been named in the Top 5 U.S. States In the Midwest To Do Business (Chief Executive, 2023)

