

# CLIENT HANDOUT - COMMERCIAL / INDUSTRIAL



## LISTING INFORMATION

|                     |                  |                        |       |
|---------------------|------------------|------------------------|-------|
| <b>MLS #</b>        | 20242341         | <b>Lot Land Size</b>   | 00000 |
| <b>Asking Price</b> | \$230,000        | <b>Building Size</b>   | 3750  |
| <b>Status</b>       | Active           | <b>Year Built</b>      | 1950  |
| <b>Type</b>         | Commercial       | <b>Existing Leases</b> | Yes   |
| <b>Area</b>         |                  |                        |       |
| <b>County</b>       | Luna County      |                        |       |
| <b>Address</b>      | 718 W Spruce St. |                        |       |
| <b>City</b>         | Deming           |                        |       |
| <b>State</b>        | NM               |                        |       |
| <b>Zip</b>          | 88030            | <b>ETZ Y/N</b>         | No    |

## GENERAL INFORMATION

**# Offices**  
**# Loading Docks**  
**# Restrooms**  
**# Parking Spaces**  
**Taxes \$** \$1,564.00  
**Tax Year** 2023  
**BUILDING TYPE** Commercial, Beauty Shop, Other  
**CONSTRUCTION** Block  
**EXTRAS** High Visibility, Paved, Retail Frontage

## MAP



## FOR MORE INFORMATION...

**EVA LUNA**  
**CELL: 575-494-0969**  
[eva@demingrealty.com](mailto:eva@demingrealty.com)

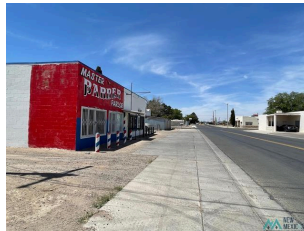
**DEMING REALTY CO., LLC.**  
**220 S GOLD AVE**  
**DEMING NM 88030**



## LIST OFFICE

DEMING REALTY CO., LLC.  
OFFC: 575-546-8818

## ADDITIONAL PHOTOS



## DIRECTIONS / PUBLIC REMARKS

**Directions** East on Spruce St to property

**Public Remarks** Investment Property, Income generating commercial building on Spruce St. Built in 1950, this property is currently leased and occupied. Call us for more info!