

Union Plaza

3030 NW Expressway, Suite 300, Oklahoma City, OK
73112



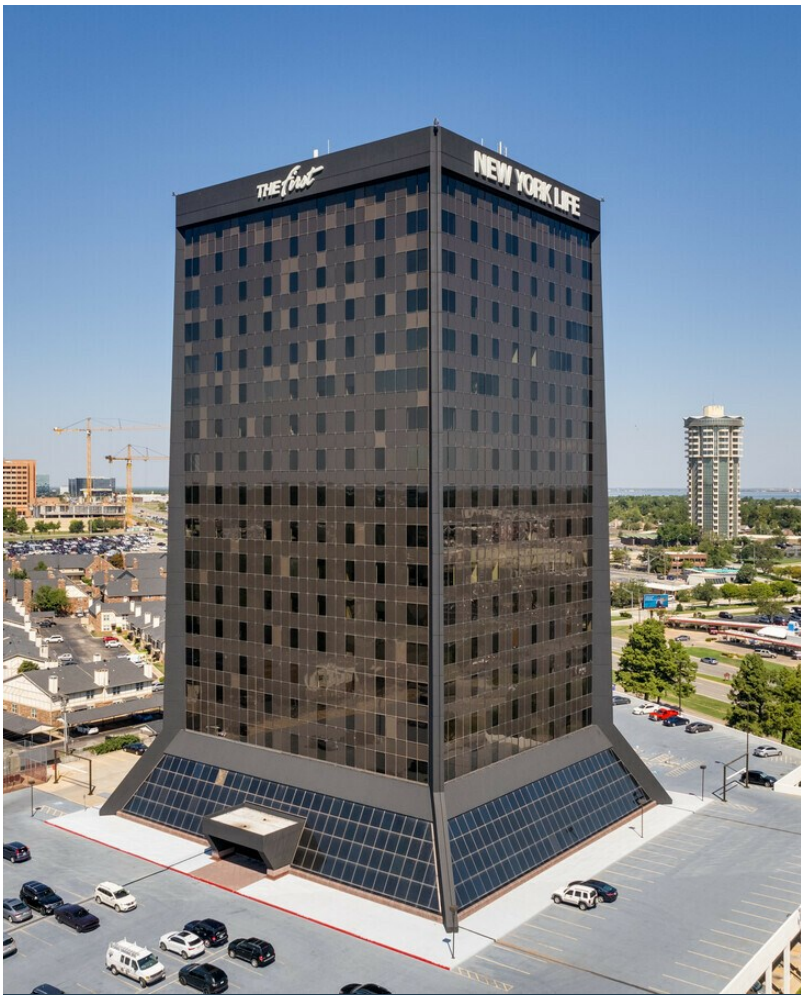
Beth DeGraffenreid

Essential Offices

3030 NW Expressway, Suite 300, Oklahoma City, OK 73112

beth@essentialoffices.com

(405) 848-8246



Union Plaza

Oklahoma City

Welcome to Essential Offices - Union Plaza!

Opened in January 2024, our new build out is tailored to meet the needs of enterprise companies. We prioritize a high level of service, secure, fiber internet, an amenity-rich environment, and professionalism. We offer keycard entry, on-site security personnel, access to 11 conference rooms, and tier 1 fiber internet with built-in firewalls and ethernet ports. Our location provides the convenience of suburban amenities...

- Private Offices starting from \$550 per month!
- New, modern build out with all the amenities your team requires, Free coffee, water & snacks
- Operational in the Oklahoma City market for over 35 years.
- Access to 11 fully equipped conference rooms up to 24 people.
- Enterprise Grade Internet included in office contract. Secure connectivity with Cat 6 cabling
- Flexible terms, 1-month security deposit. Get started today!



Rental Rate:	Upon Request
Property Type:	Office
Building Class:	A
Rentable Building Area:	251,628 SF
Year Built:	1980
Walk Score ®:	77 (Very Walkable)
Transit Score ®:	36 (Some Transit)
Rental Rate Mo:	Upon Request

3rd Floor Ste Team Option: H

Space Available	534 SF
Rental Rate	Upon Request
Date Available	Available Now
Service Type	Full Service
Space Type	Coworking
Space Use	Office

Team Office, designed to accommodate a dynamic team of 6 to 11 members. Equipped with Ethernet internet connections, this space comes fully furnished with brand-new 30"x60" desks, complete with locking storage solutions and ergonomic chairs for optimal comfort and productivity.

4th Floor Ste 453

Space Available	145 SF
Rental Rate	Upon Request
Date Available	Available Now
Service Type	Full Service
Space Type	Coworking
Space Use	Office

Discover the perfect workspace for your small team in the heart of NW Oklahoma City. Our office space is tailored to accommodate 1-3 people, providing a productive environment for focused work and collaboration. Enjoy the convenience of modern amenities and a vibrant community while you work towards your goals.

4th Floor Ste Team Option: A

Space Available	1,136 SF
Rental Rate	Upon Request
Date Available	Available Now
Service Type	TBD
Space Type	Coworking
Space Use	Office

Team Office, specifically designed to accommodate a team of 22 individuals. Featuring Ethernet internet connections, this space is outfitted with fresh 30"x60" desks, complete with locking storage facilities and ergonomic chairs, prioritizing both functionality and comfort.

4th Floor Ste Team Option: B

Space Available	704 SF
Rental Rate	Upon Request
Date Available	Available Now
Service Type	Full Service
Space Type	Coworking
Space Use	Office

Team Office, designed to accommodate a team of 15! It's got everything you need for a smooth workflow, including Ethernet internet connections and secure WiFi. Plus, you'll love the brand-new 30"x60" desks, complete with locking storage for your gear and super comfy ergonomic chairs.

4th Floor Ste Team Option: C

Space Available	805 SF
Rental Rate	Upon Request
Date Available	Available Now
Service Type	Full Service
Space Type	Coworking
Space Use	Office

Team Office tailor-made for a team of 16! We're talking top-notch Ethernet internet connections and ultra-secure WiFi, paired with sleek new 30"x60" desks, locking storage options, and super comfy ergonomic chairs.

6

4th Floor Ste Team Option: D

Space Available	1,019 SF
Rental Rate	Upon Request
Date Available	Available Now
Service Type	Full Service
Space Type	Coworking
Space Use	Office

Team Office, perfect for a crew of 20! We've got all the tech essentials covered with Ethernet internet connections and rock-solid secure WiFi. Sleek new 30"x60" desks, complete with locking storage for all your gear, and super comfy ergonomic chairs.

7

4th Floor Ste Team Option: E

Space Available	371 SF
Rental Rate	Upon Request
Date Available	Available Now
Service Type	Full Service
Space Type	Coworking
Space Use	Office

Team Office designed for an 8-member team! Enjoy seamless connectivity with Ethernet internet connections and secure WiFi. Take a seat in our brand-new 30"x60" desks, complete with locking storage for your convenience, and sink into the comfort of our ergonomic chairs.

8

4th Floor Ste Team Option: F

Space Available	2,155 SF
Rental Rate	Upon Request
Date Available	Available Now
Service Type	Full Service
Space Type	Coworking
Space Use	Office

Enterprise-ready Team Office custom-tailored for a team of 42! Stay connected with Ethernet internet connections and secure WiFi. Furnished with top-of-the-line 30"x60" desks, complete with locking storage solutions and ergonomic chairs, this workspace is designed to meet the needs of large-scale operations. It's the perfect blend of functionality and comfort for your enterprise team's success.

9

4th Floor Ste Team Option: G

Space Available	1,641 SF
Rental Rate	Upon Request
Date Available	Available Now
Service Type	Full Service
Space Type	Coworking
Space Use	Office

Enterprise Team Office, custom-designed for a team of 32! Stay connected with Ethernet internet connections and secure WiFi, while enjoying the comfort and productivity of our brand-new 30"x60" desks, complete with locking storage options and ergonomic chairs. It's the ultimate workspace solution crafted for large-scale enterprises, ensuring seamless collaboration and efficiency for your team.



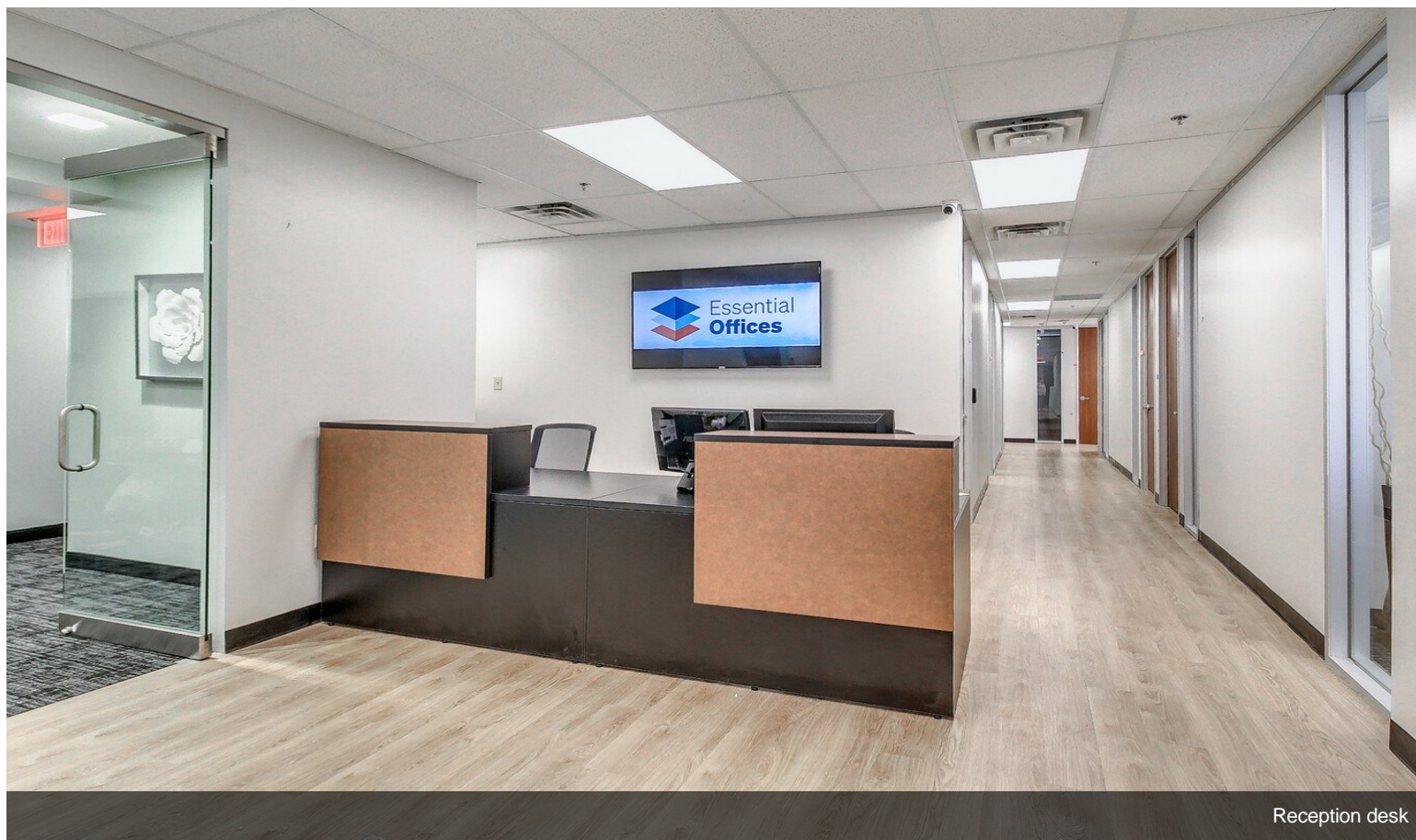
3030 NW Expressway, Suite 300, Oklahoma City, OK 73112

Welcome to Essential Offices - Union Plaza!

Opened in January 2024, our new build out is tailored to meet the needs of enterprise companies. We prioritize a high level of service, secure, fiber internet, an amenity-rich environment, and professionalism. We offer keycard entry, on-site security personnel, access to 11 conference rooms, and tier 1 fiber internet with built-in firewalls and ethernet ports. Our location provides the convenience of suburban amenities including free parking, dining, shopping, and lodging options, blending suburban comfort with professional sophistication.

Join us at Essential Offices - Union Plaza and elevate your work experience today!

Property Photos

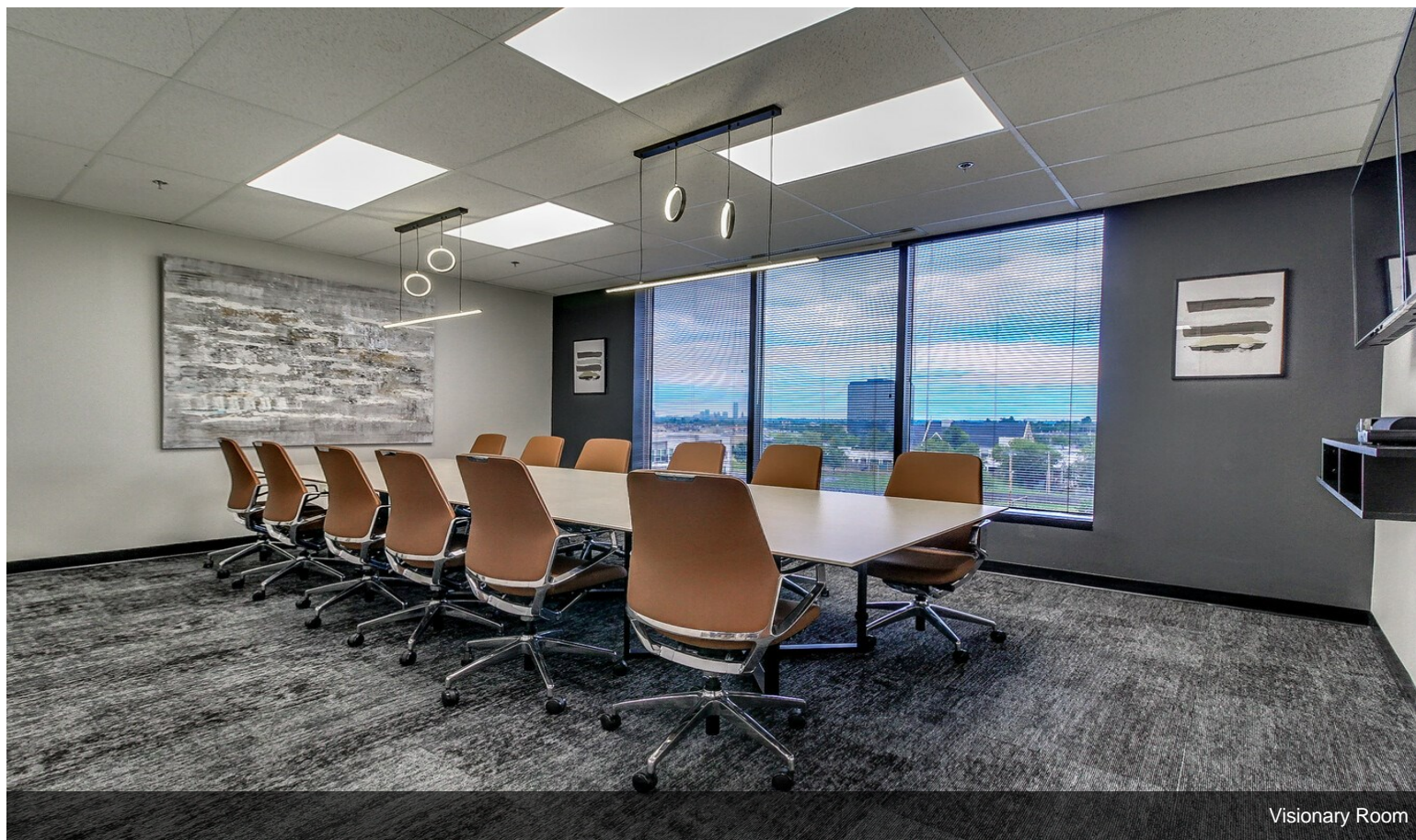


Reception desk

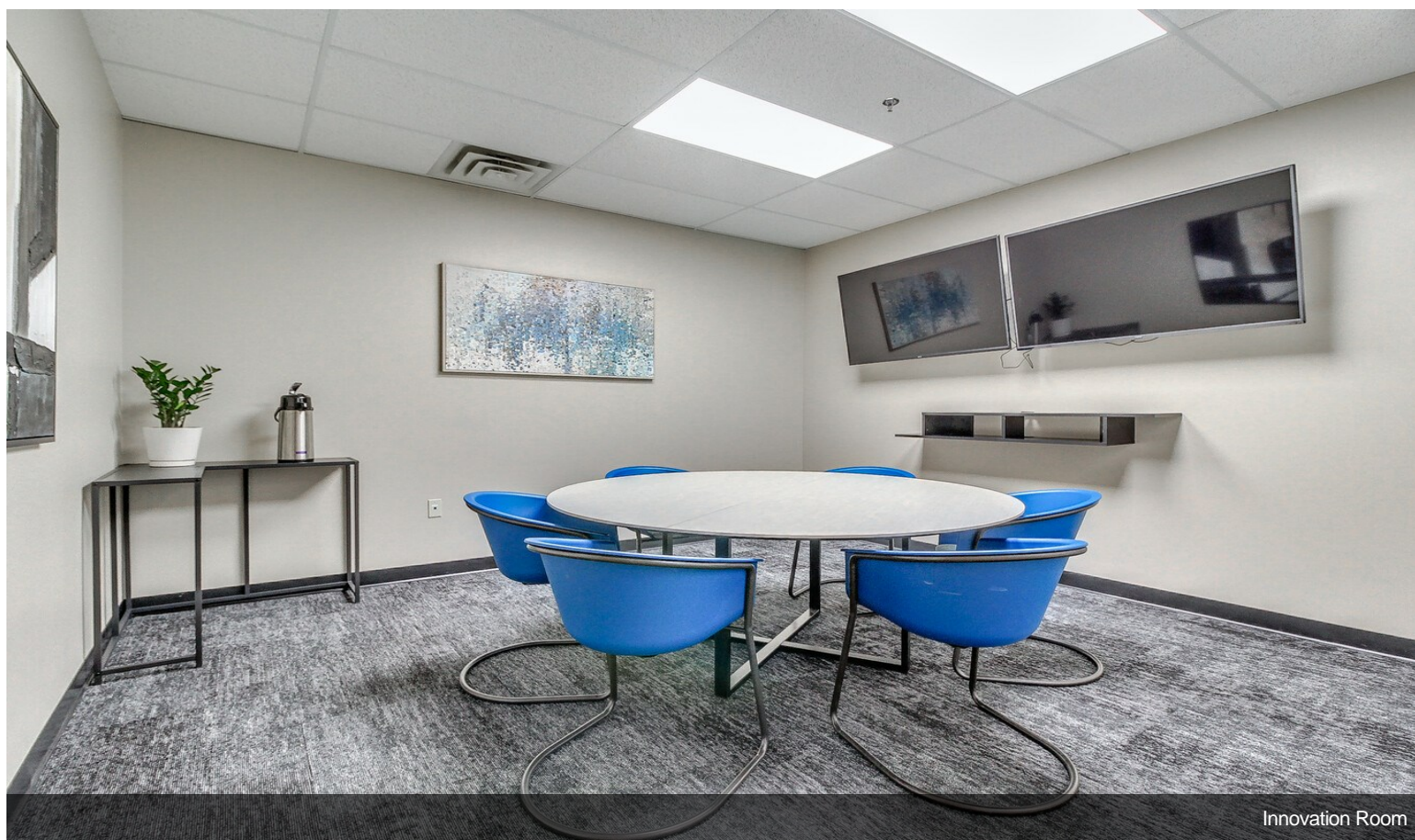


Lobby

Property Photos

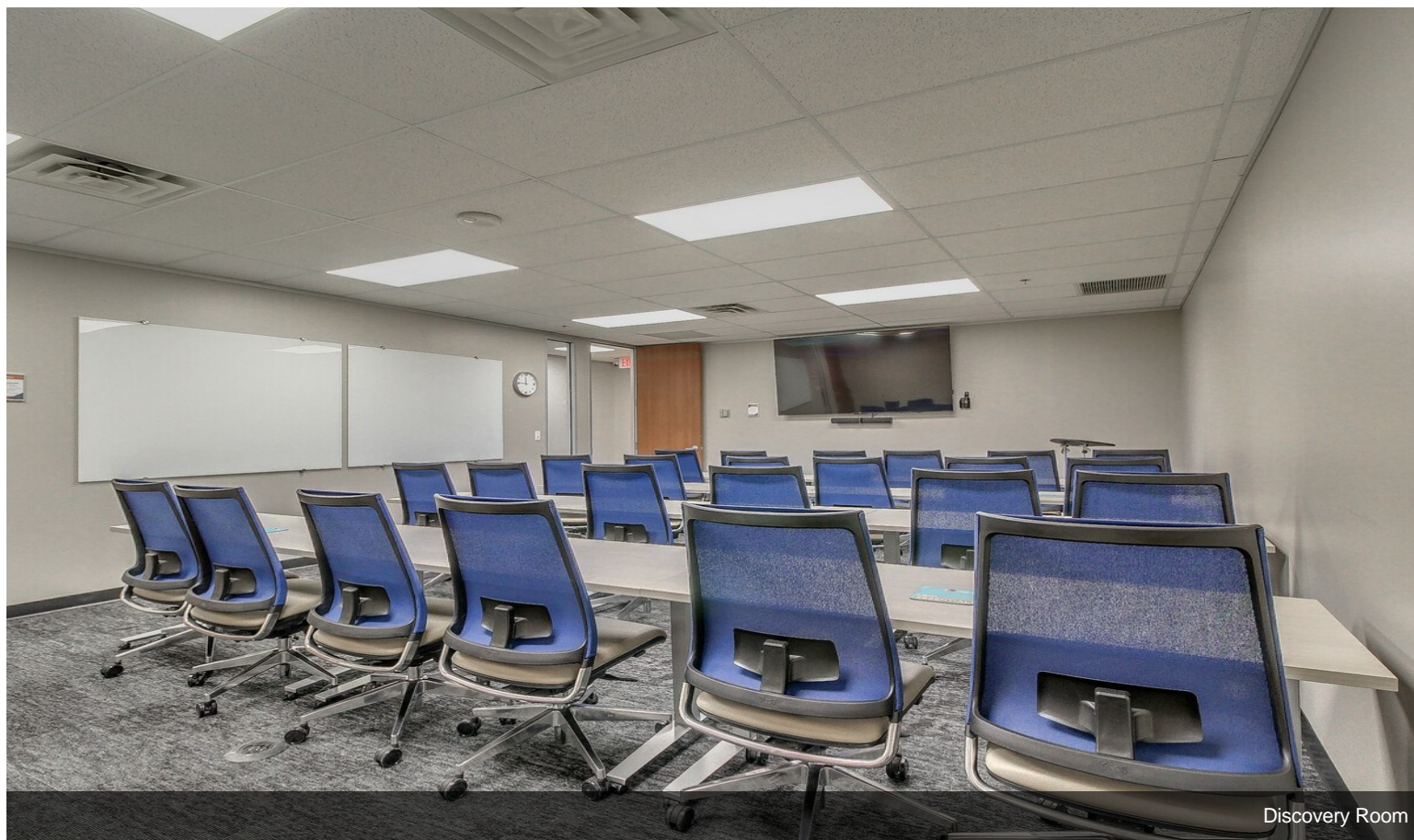


Visionary Room

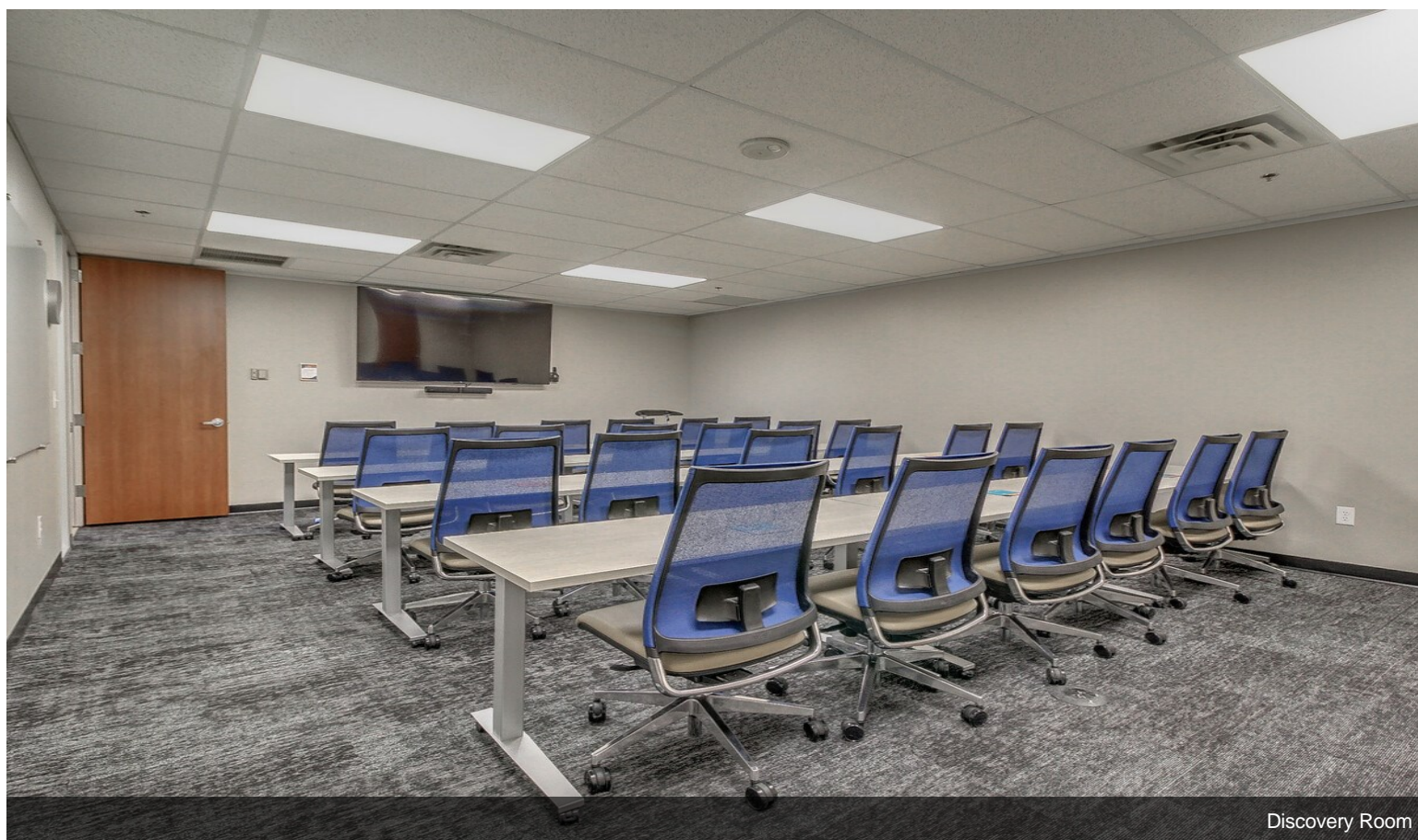


Innovation Room

Property Photos



Discovery Room

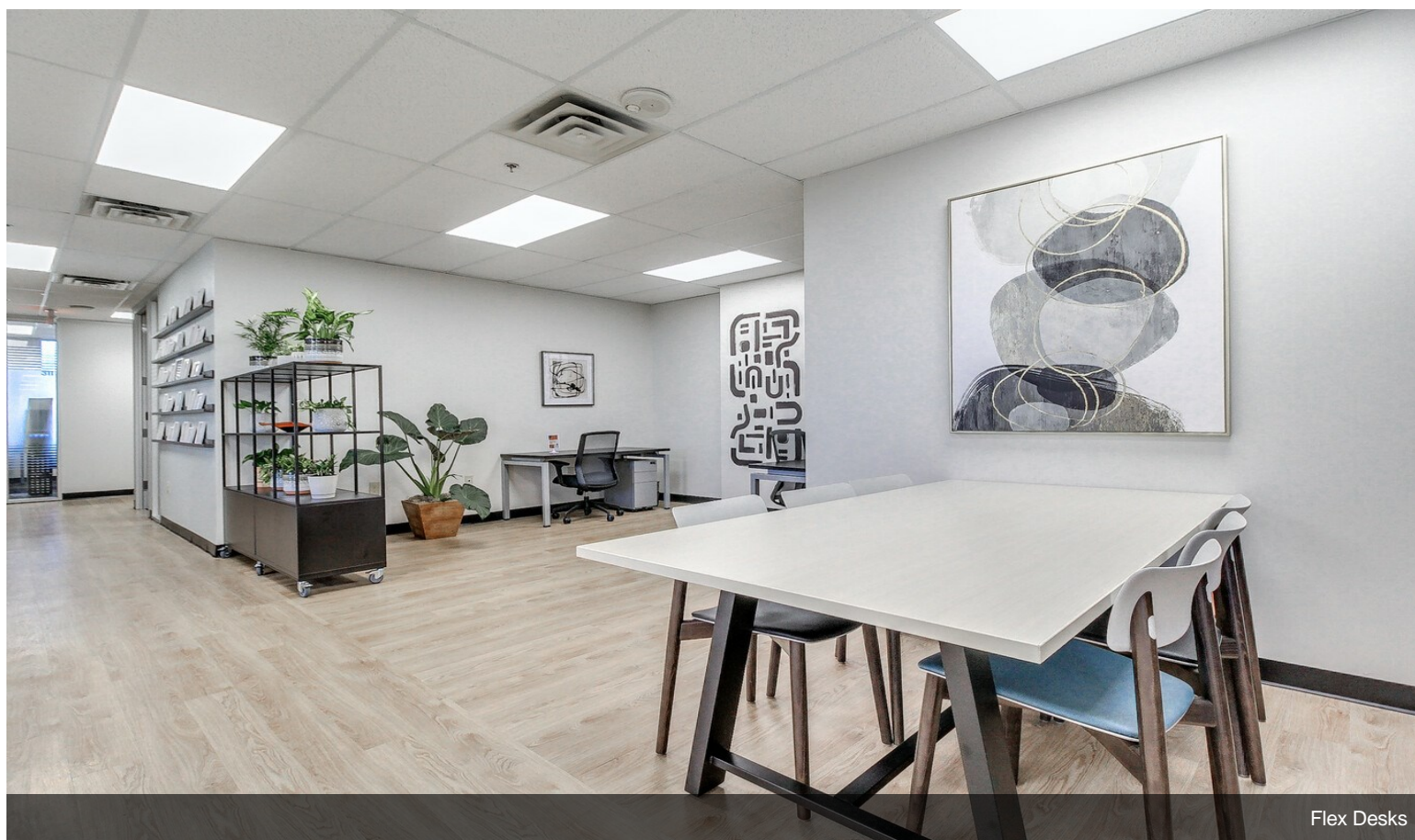


Discovery Room

Property Photos



4th Floor Kitchen

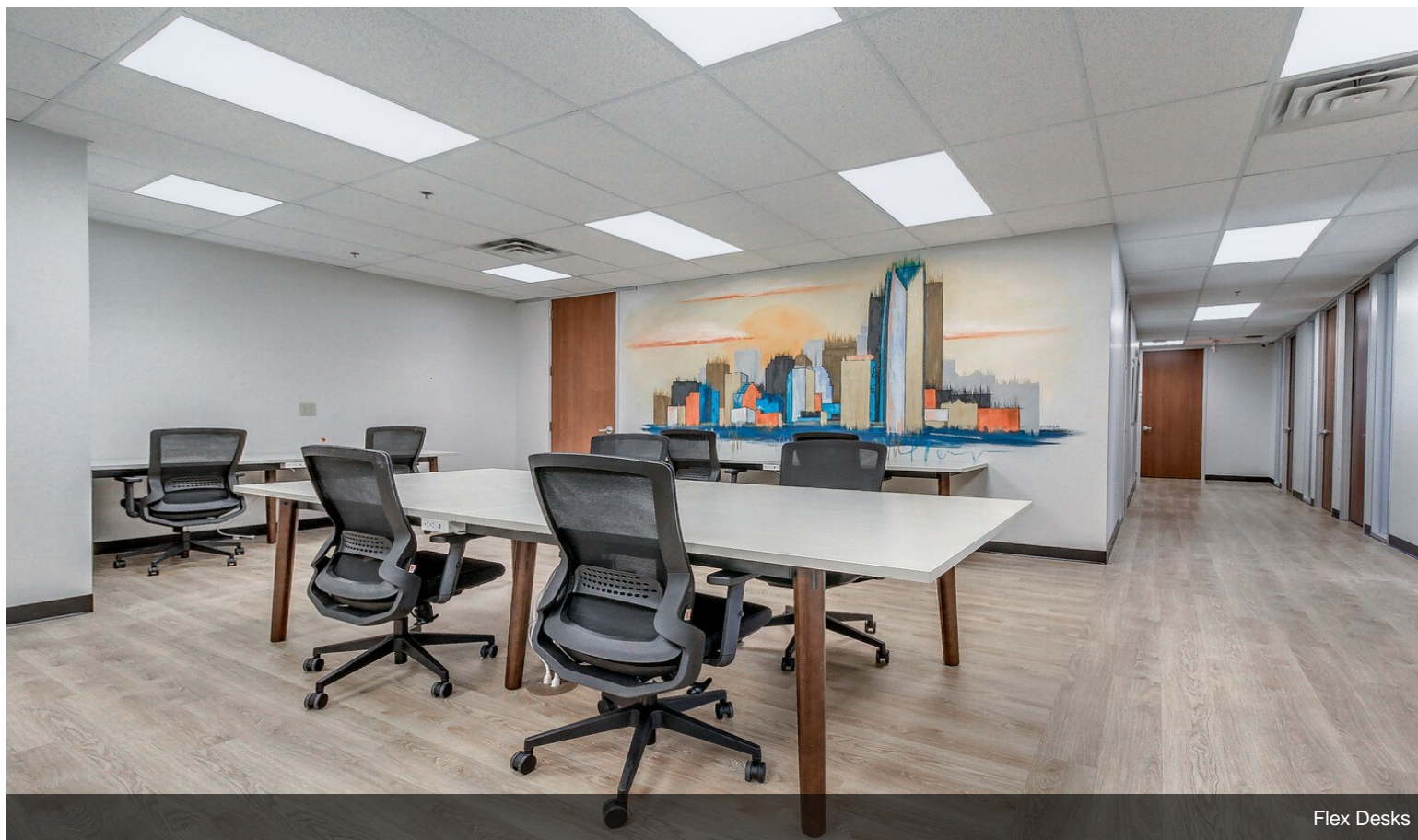


Flex Desks

Property Photos

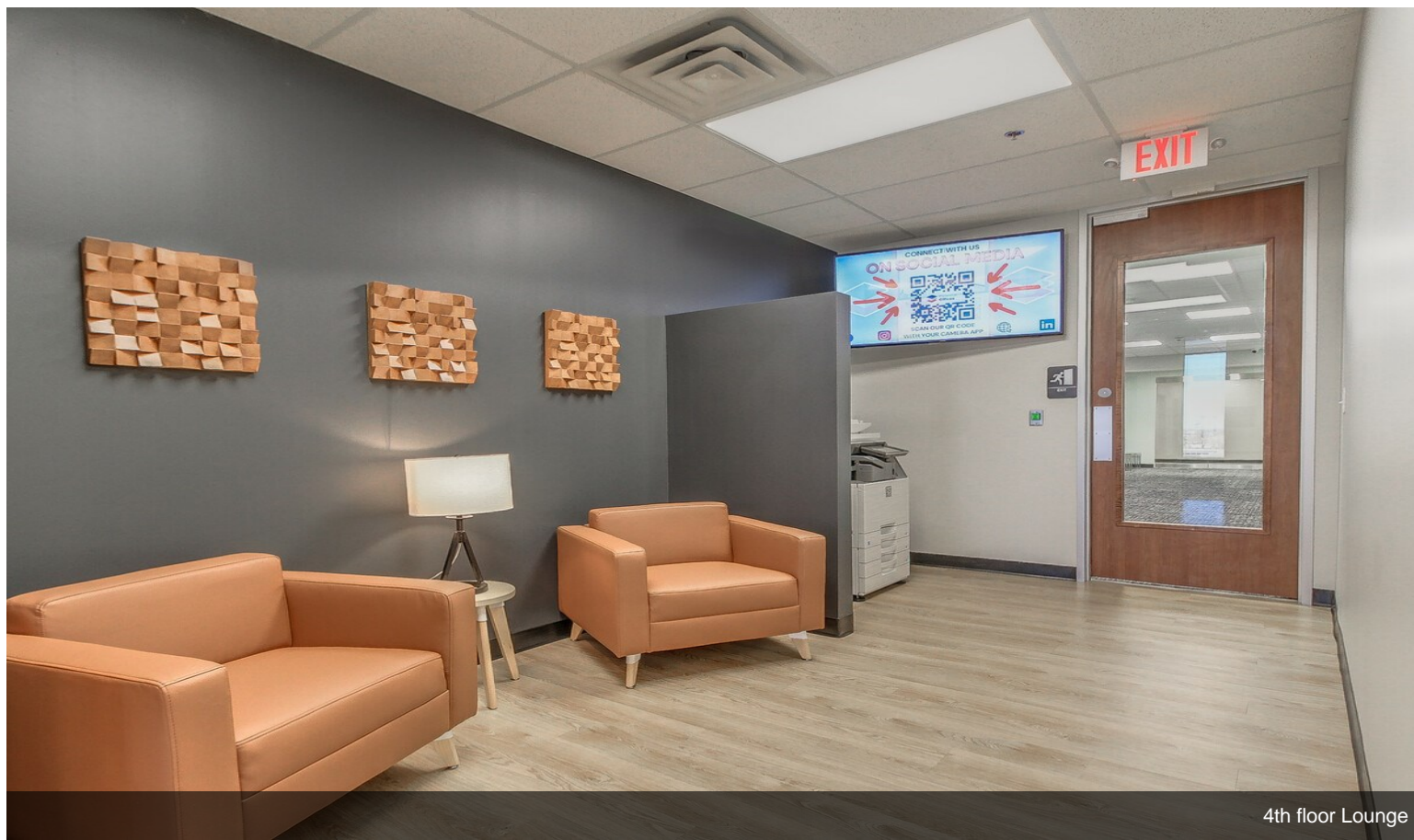


Dedicated Desks



Flex Desks

Property Photos

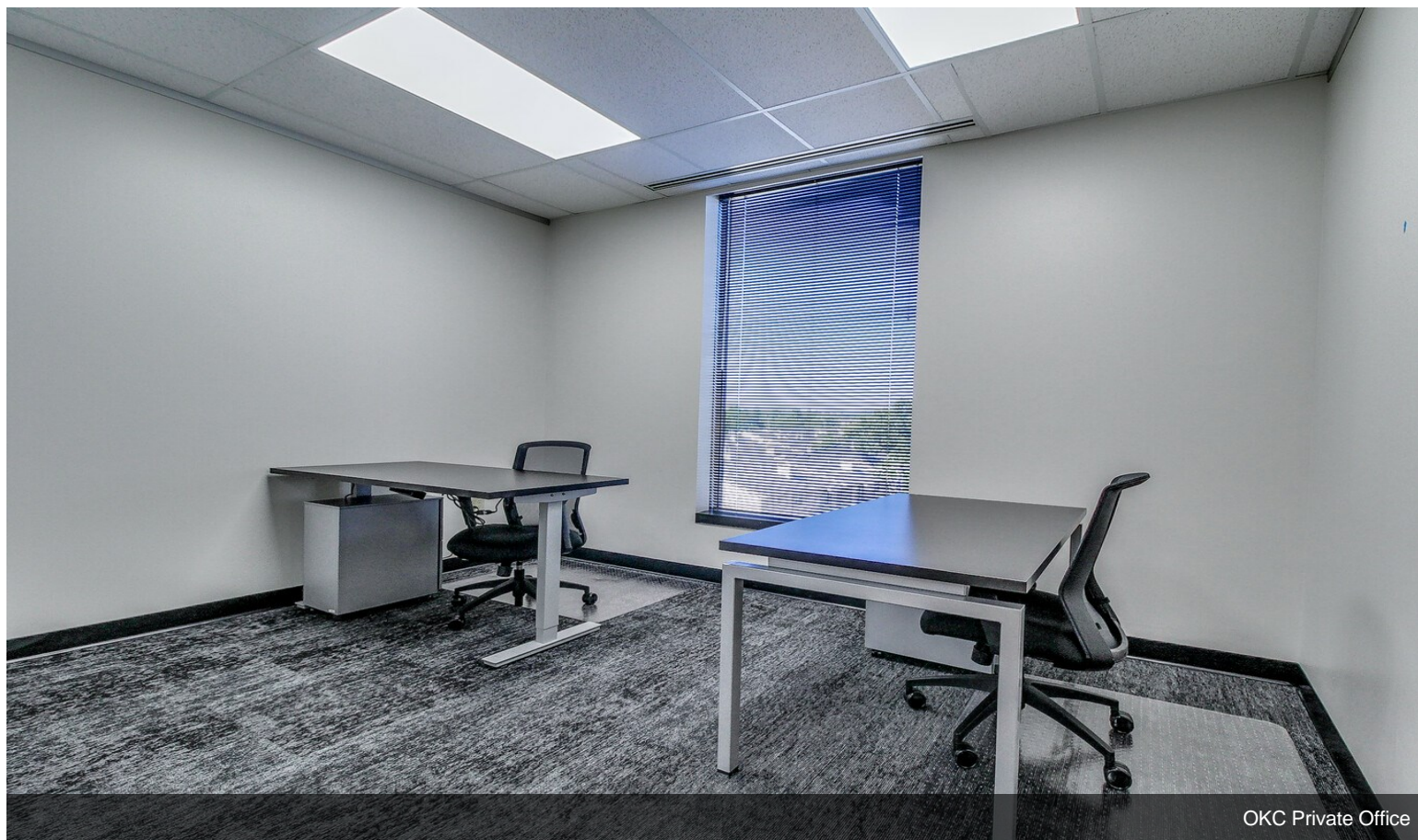


4th floor Lounge



Private Office

Property Photos



Property Photos



Private Office