

PRE-LEASING: MIDTOWN OFFICE BUILDING

ADDRESS TBD - 49TH Street & South Minnesota Avenue SIOUX FALLS SD 57105

**FOR
LEASE**



Midtown Rendering

High Visibility Location With Easy Access And Excellent Signage Opportunities Along I-229



SIZE

45,339 SF
Subdividable



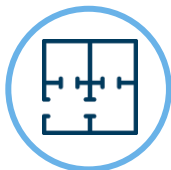
PRICE

Contact Broker



AVAILABLE

Negotiable based on plans.



LAYOUT

Outstanding professional office building to be constructed with forward-thinking architecture. This three-story structure will include daylighting design, underground parking of 32 stalls, drive-up potential and 1:234 ratio surface parking.



LOCATION

This office building will be located at the corner of 49th Street & South Minnesota Avenue, right by I-229 ramps, offering easy accessibility & high visibility to traffic in all directions.



COTENANCY

Neighboring businesses include All City Pet Care Veterinary, Arby's, Amy Stockberger Real Estate, Subway, Benjamin Moore Paint, Dollar Tree, Staples T&A Service, Ace Hardware, McDonald's, Billion Auto & many more.

Information deemed reliable but not guaranteed.



**MIKE
VAN BUSKIRK**
605.366.0936
mike@vbclink.com

605.361.8211 | VBCcommercial.com

2571 S Westlake Dr #100 Sioux Falls SD 57106

Area Map



605.361.8211 | VBCcommercial.com

2571 S Westlake Dr #100 Sioux Falls SD 57106

MIKE
VAN BUSKIRK
605.366.0936
mike@vbclink.com

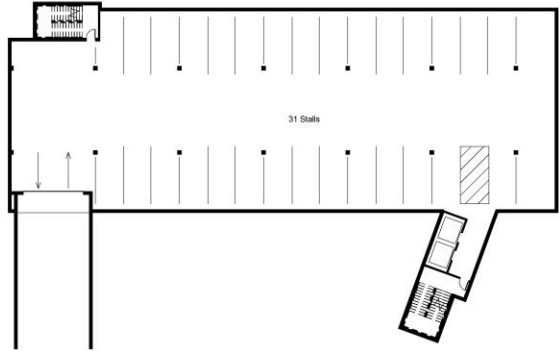
Rendering & Preliminary Site Plan



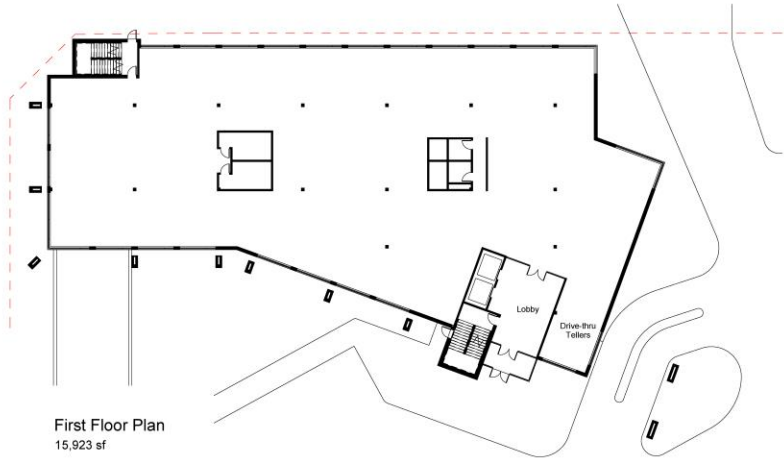
605.361.8211 | VBCcommercial.com
2571 S Westlake Dr #100 Sioux Falls SD 57106

MIKE
VAN BUSKIRK
605.366.0936
mike@vbclink.com

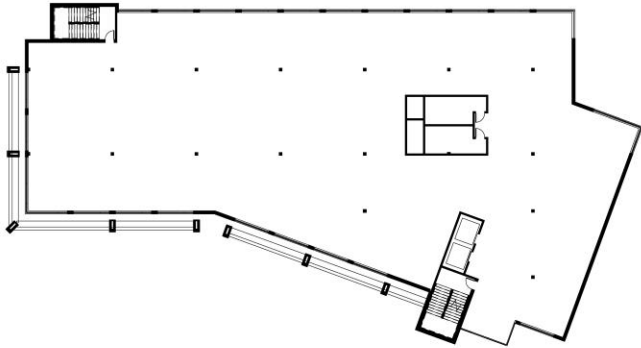
Three Levels and Underground Parking



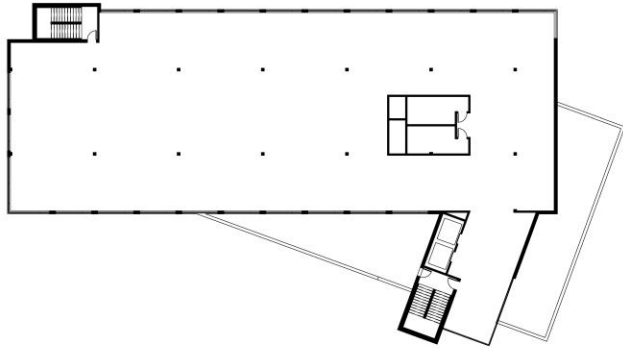
Garage Level Plan
12,897 sf



First Floor Plan
15,923 sf



Second Floor Plan
15,870 sf



Third Floor Plan
13,546 sf



605.361.8211 | VBCcommercial.com

2571 S Westlake Dr #100 Sioux Falls SD 57106

MIKE
VAN BUSKIRK
605.366.0936
mike@vbclink.com