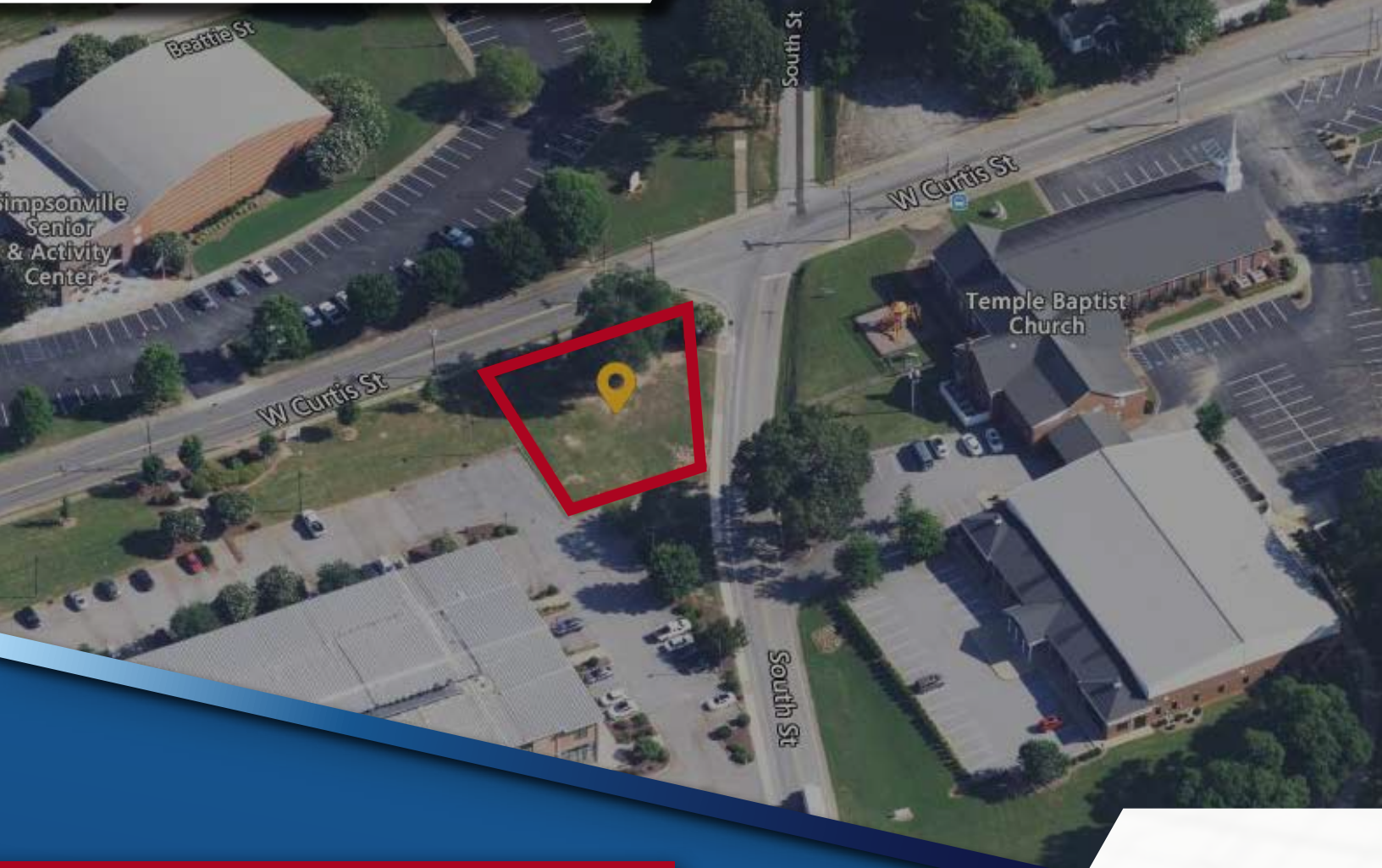


COMMERCIAL LAND

301 W CURTIS STREET  
SIMPSONVILLE, SC 29681



## PROPERTY DETAILS

COTTON MILL OUTPARCEL

± 0.24 ACRES

ZONED ID (Innovative Design)

APPROVED USE: Retail, Office Building, Residential Duplex

2 BLOCKS FROM MAIN STREET  
SIMPSONVILLE

TAX MAP #0324000400121

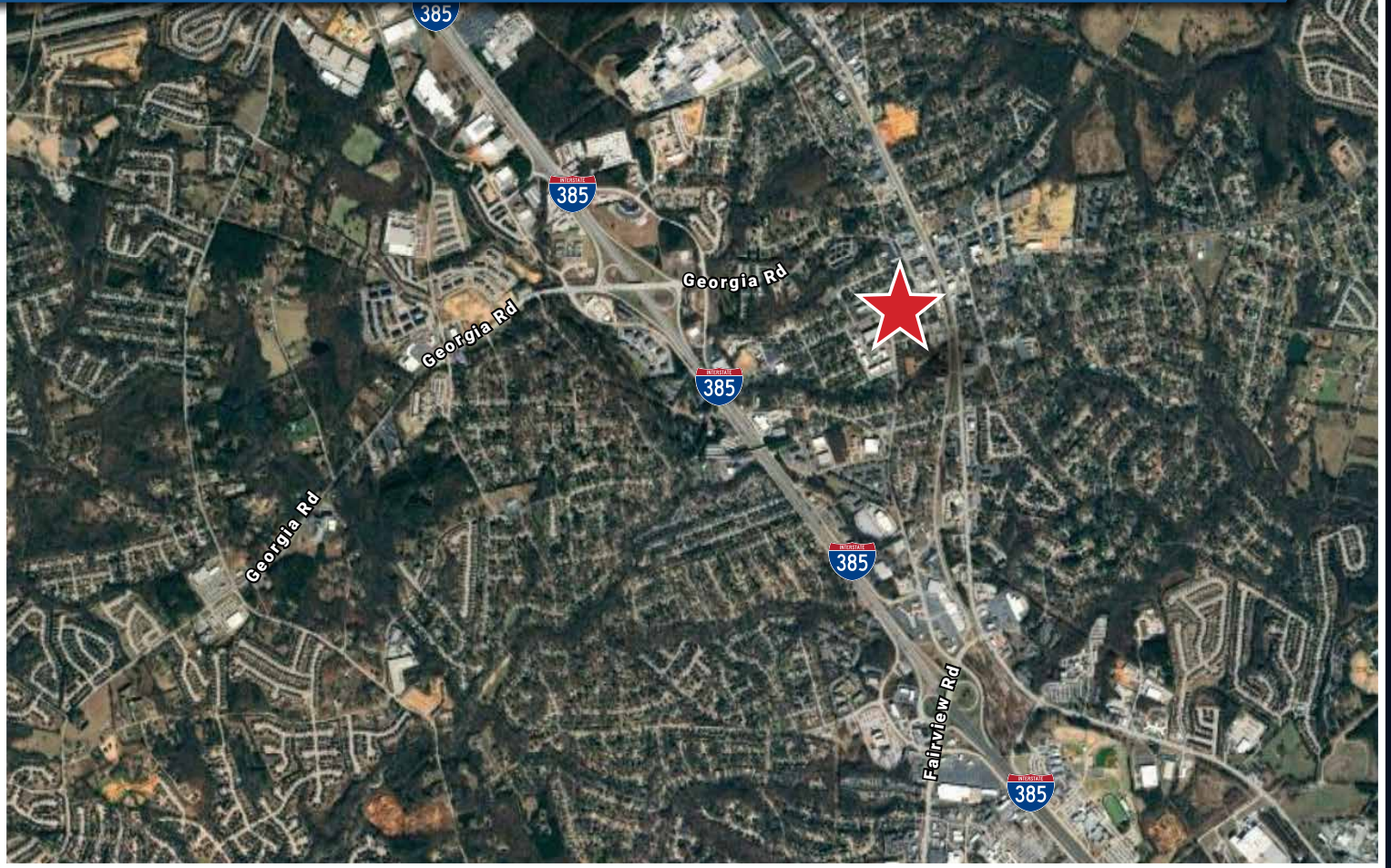
SALE PRICE \$357,000



TRACEY EASTERLING  
COMMERCIAL SALES & LEASING  
864-293-9400  
TRACEY@FLAGSHIPSC.COM



# 301 W CURTIS STREET | SIMPSONVILLE, SC 29681



ZONED ID (INNOVATIVE DESIGN) | 2 BLOCKS FROM MAIN STREET SIMPSONVILLE



## 2023 Demographics

	1 Mile	3 Miles	5 Miles
<b>Population</b>	8,985	48,603	114,940
<b>Average HH Income</b>	\$82,921	\$98,693	\$97,123
<b>Households</b>	3,795	18,561	43,714

TRACEY EASTERLING  
 COMMERCIAL SALES & LEASING  
 864-293-9400  
 TRACEY@FLAGSHIPSC.COM

