

**2790
DONALD LEE
HOLLOWELL
PKWY NW**
ATLANTA, GA
30318

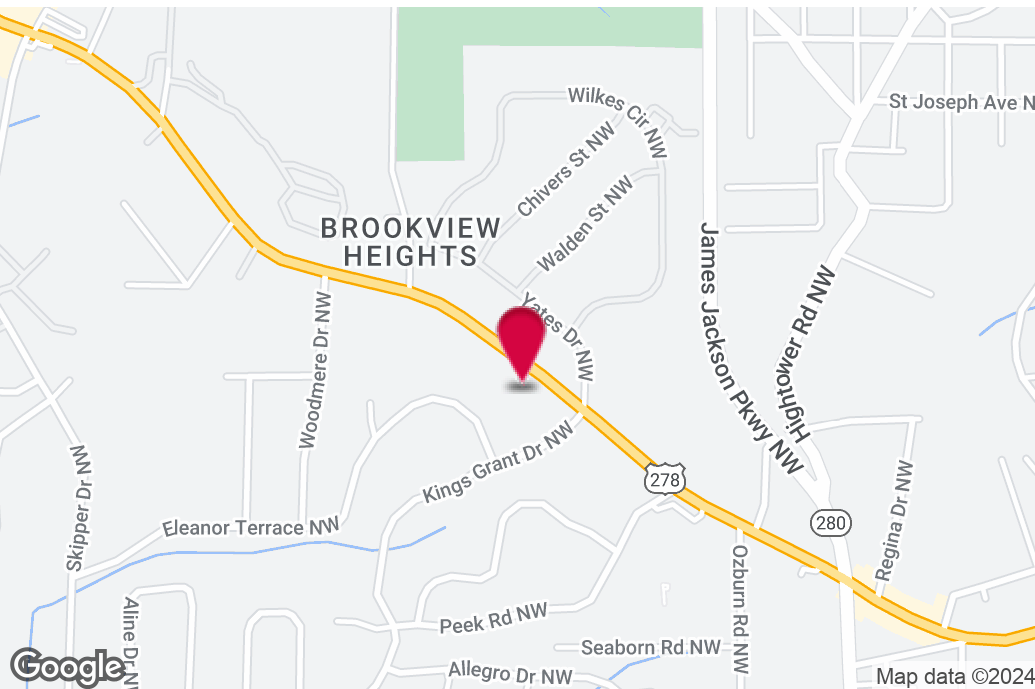
3.35+/- Acres For Lease

STEVE RATCHFORD, SIOR, CCIM
Senior Vice President
404.942.2003
sratchford@kingindustrial.com

King *Industrial
Realty, Inc.*

Industrial • Commercial • Investment
404.942.2000 | kingindustrial.com

FOR LEASE
3.35+/- ACRES



PROPERTY HIGHLIGHTS

- 177' Road Frontage
- Partially Open Level Topography
- 1+/- Mile from I-285

OFFERING SUMMARY

Lot Size:	3.35 Acres
Zoning:	C-1

STEVE RATCHFORD, SIOR, CCIM

Senior Vice President

404.942.2003

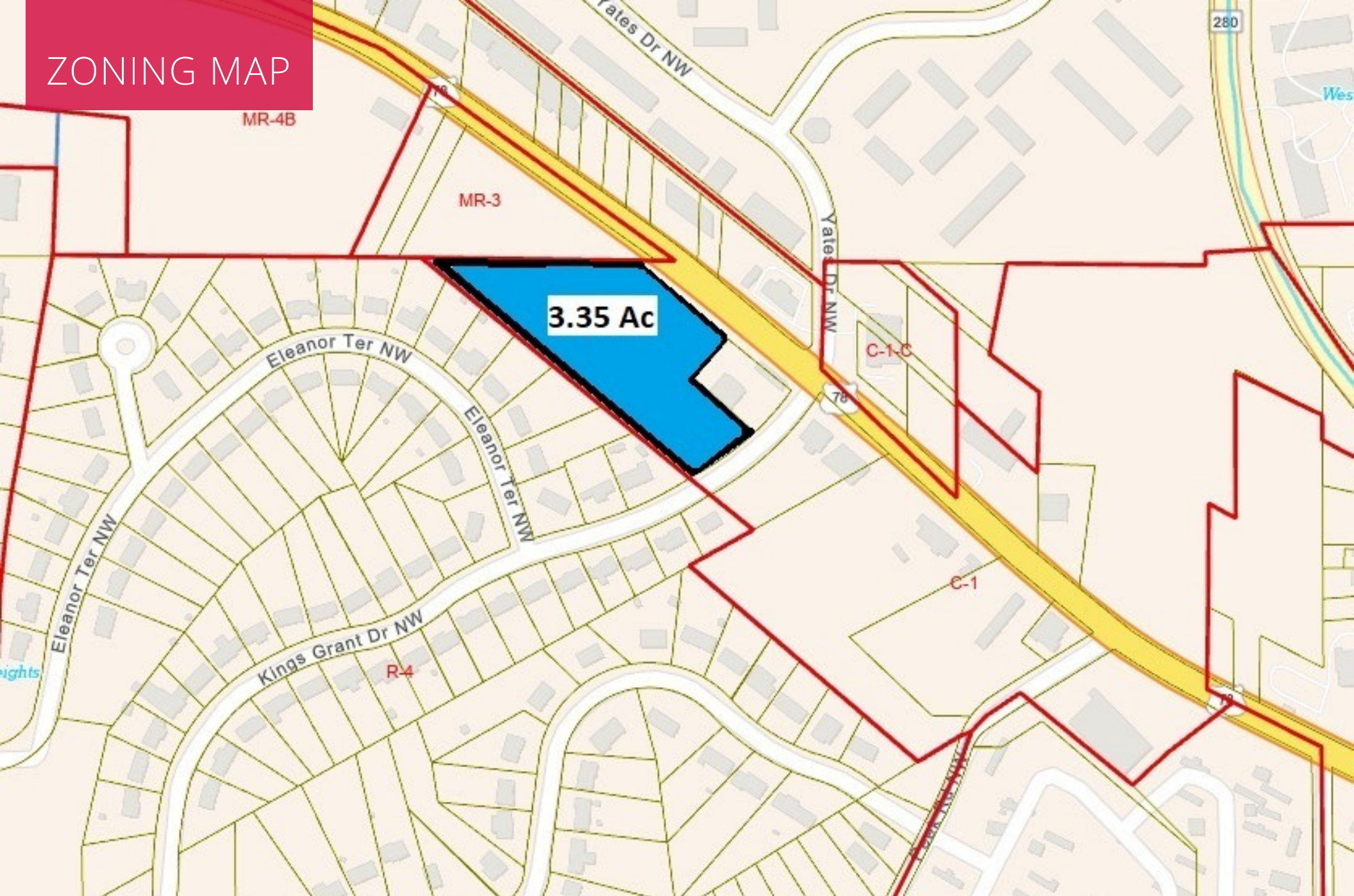
sratchford@kingindustrial.com

Every effort has been made to provide accurate information, but no liability is assumed for errors or omissions.



Industrial • Commercial • Investment
404.942.2000 | kingindustrial.com

ZONING MAP



STEVE RATCHFORD, SIOR, CCIM

Senior Vice President

404.942.2003

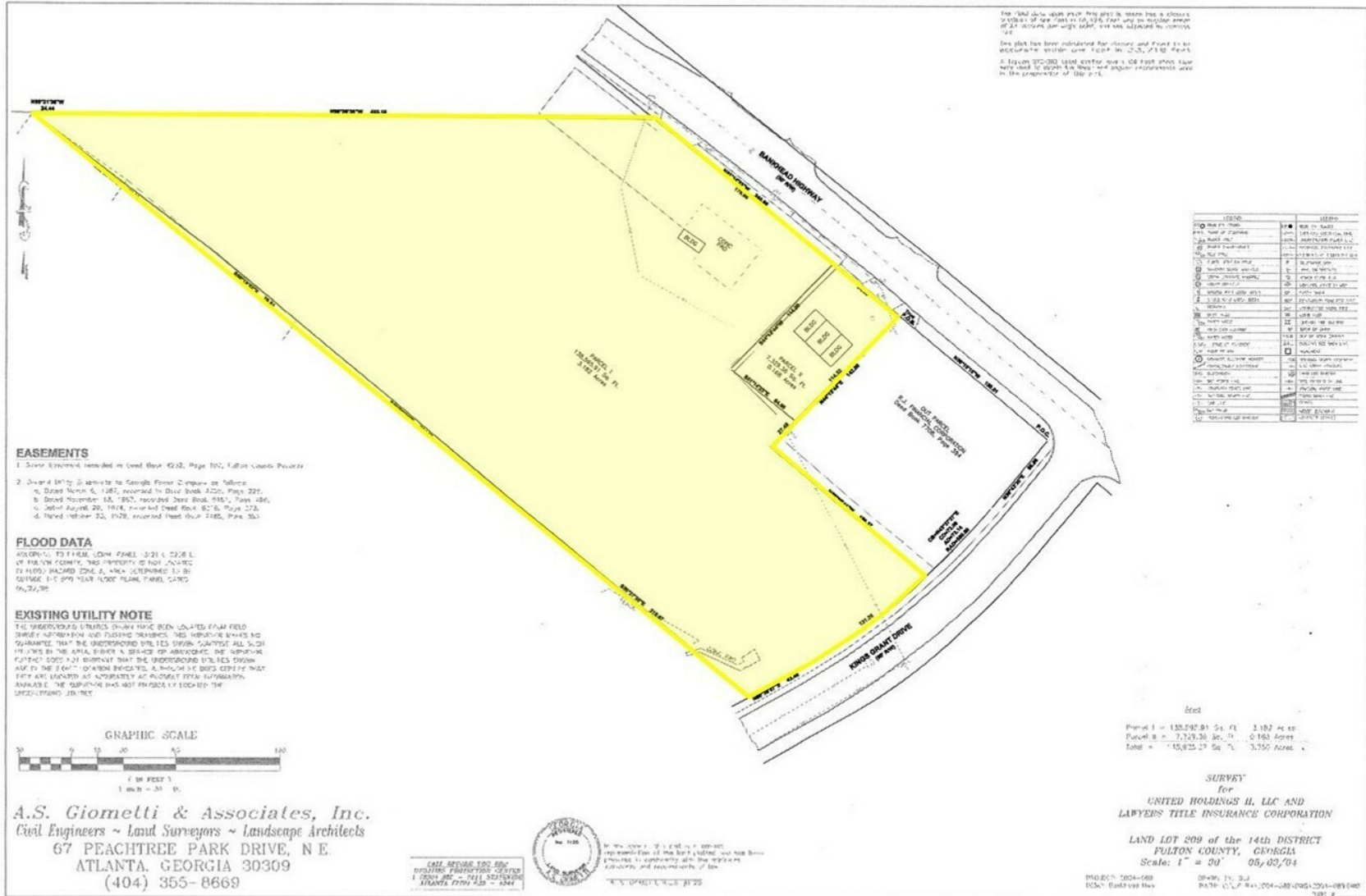
sratchford@kingindustrial.com

Every effort has been made to provide accurate information, but no liability is assumed for errors or omissions.

King Industrial Realty, Inc. **CORFAC** INTERNATIONAL

Industrial • Commercial • Investment
404.942.2000 | kingindustrial.com

SURVEY



STEVE RATCHFORD, SIOR, CCIM

Senior Vice President

404.942.2003

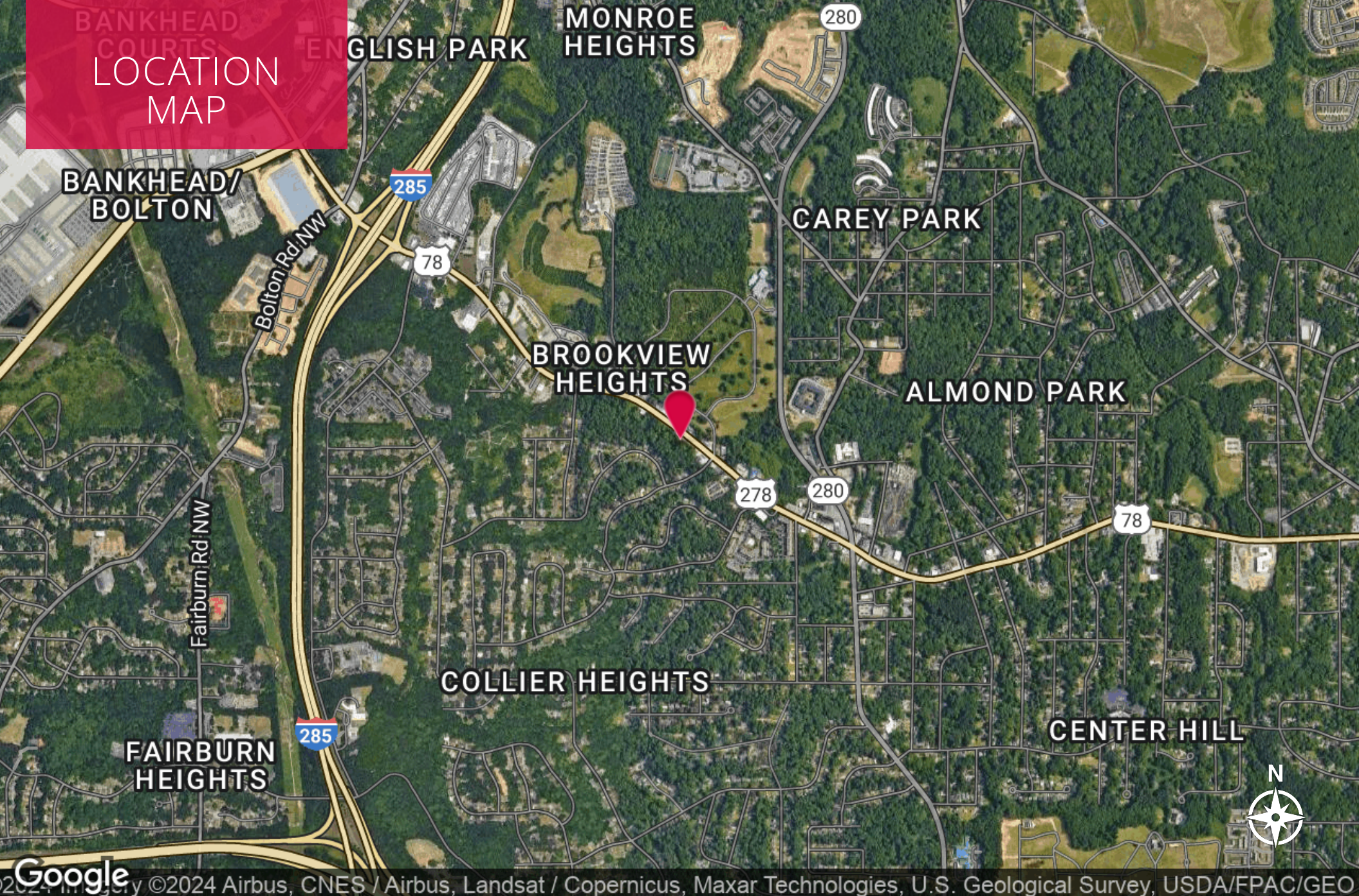
sratchford@kingindustrial.com

Every effort has been made to provide accurate information, but no liability is assumed for errors or omissions.



Industrial • Commercial • Investment
 404.942.2000 | kingindustrial.com

**LOCATION
MAP**



STEVE RATCHFORD, SIOR, CCIM

Senior Vice President

404.942.2003

sratchford@kingindustrial.com

Every effort has been made to provide accurate information, but no liability is assumed for errors or omissions.



Industrial • Commercial • Investment
404.942.2000 | kingindustrial.com

Kings Grant Drive Northwest

EXCLUSIVELY LISTED BY:

STEVE RATCHFORD, SIOR, CCIM

Senior Vice President

sratchford@kingindustrial.com

404.942.2003

King Industrial
Realty, Inc.

Industrial • Commercial • Investment
404.942.2000 | kingindustrial.com