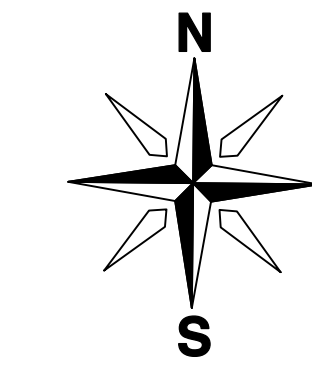
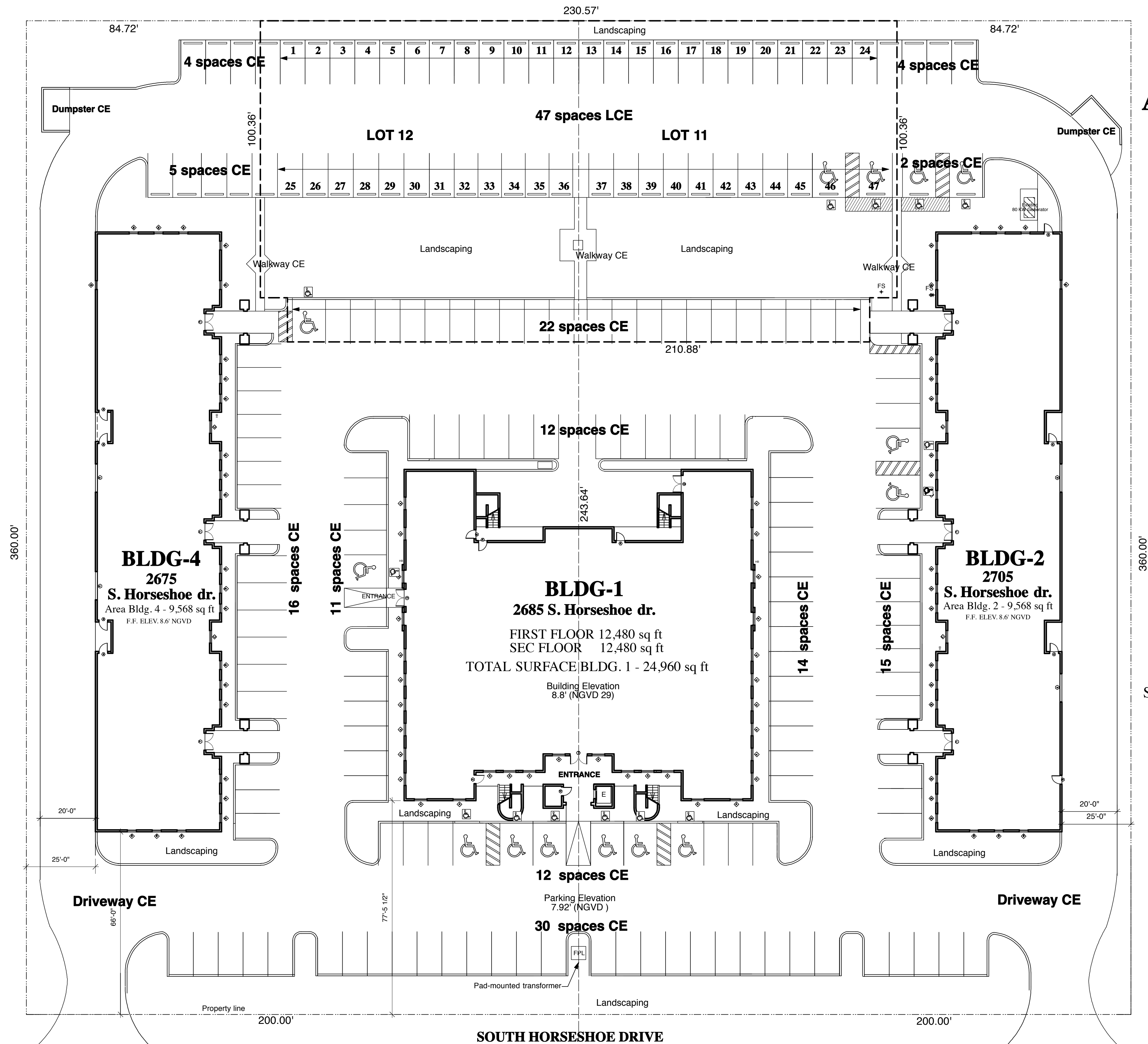


EXHIBIT 1C AMENDED SITE PLAN



HORSESHOE SQUARE A CONDOMINIUM

HORSESHOE SQUARE
SOUTH HORSESHOE DRIVE, NAPLES
COLLIER PARK OF COMMERCE

LEGEND	
LCE	Limited Common Element
CE	Common Element
- - -	Not developed phase III

All Improvements are existing
 Note: Total Site Area = 144,000 sq ft
TOTAL PARKING SPACES - 194

Prepared by
 Pelconcepts, Inc.
 650 15th Ave. South
 Naples, FL 34102
 March, 6 2012

