

# 6161 SANTA MONICA BLVD.

1619 SF 3<sup>RD</sup> FLOOR OFFICE SPACE IN HOLLYWOOD



## JARED SWEDELSON

Senior Vice President

d: 818-742-1632

m: 818-644-7597

jswedelson@naicapital.com

Cal DRE Lic #02105146

## NAI CAPITAL - WEST LA

11550 Santa Monica Blvd., Suite 1550

Los Angeles, CA 90025

d: 310-806-6100

f: 310-806-6101

www.naicapital.com

**NAI**Capital

COMMERCIAL REAL ESTATE SERVICES, WORLDWIDE

# Building Details



## Lease Rate

\$2.50/SF NNN

## Available

Suite 301: 1,619 SF

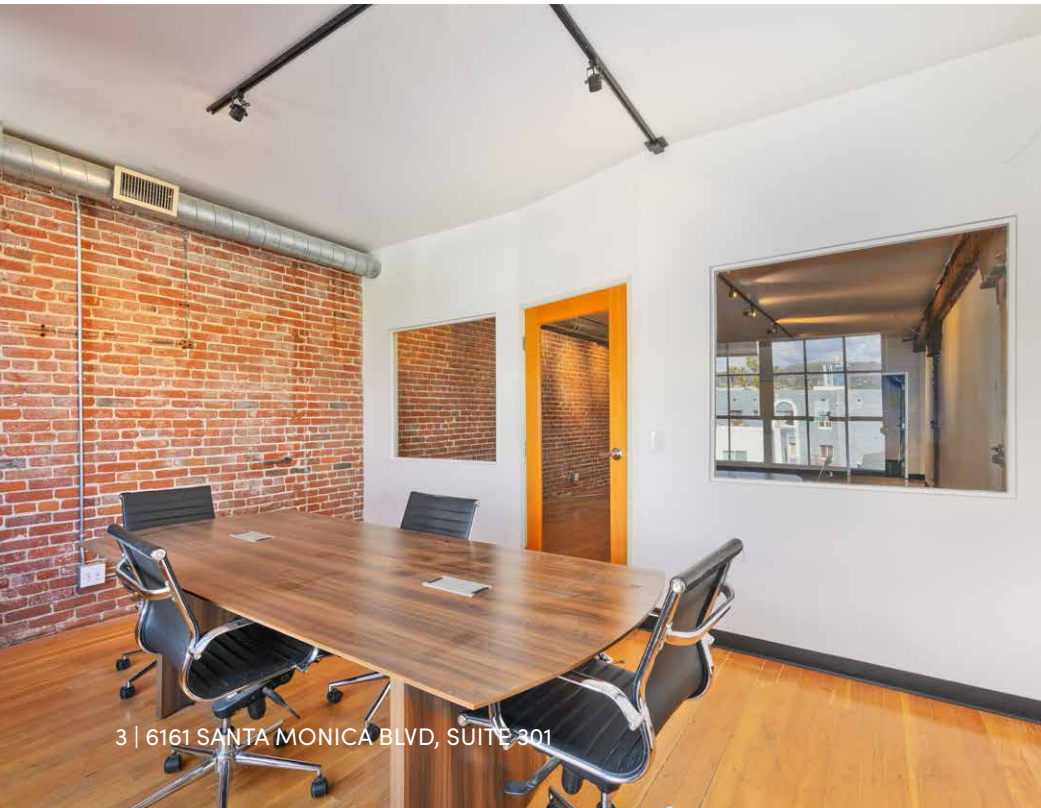
## Parking

2 spaces

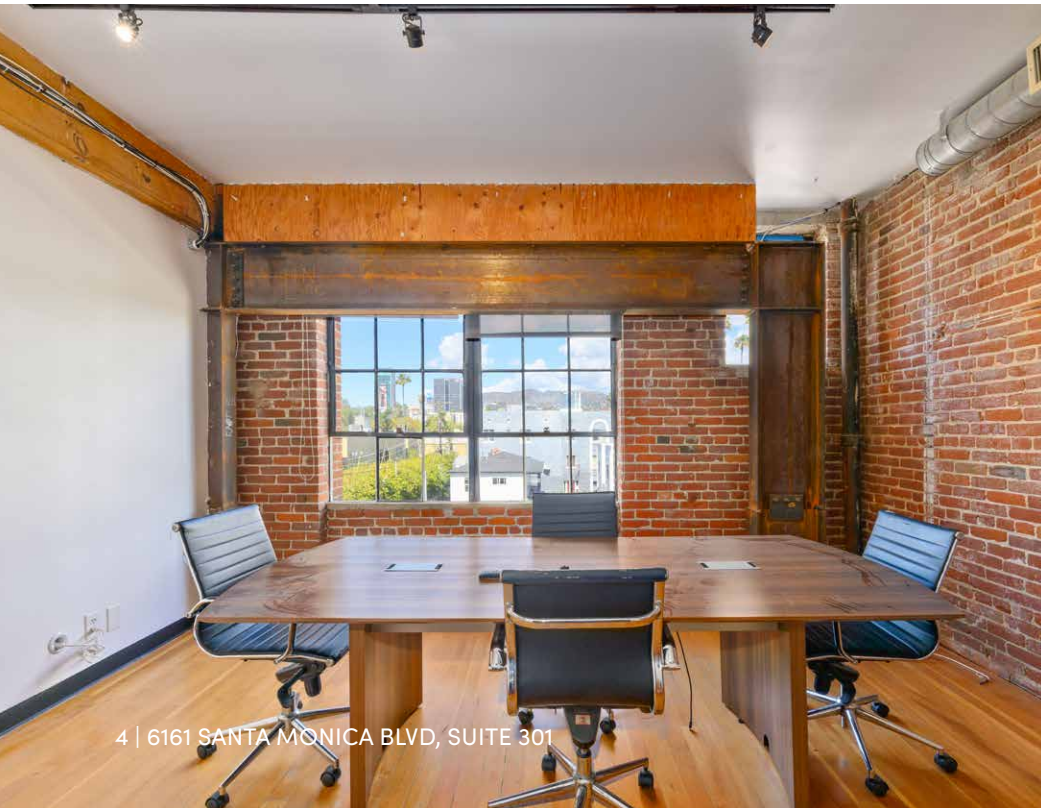
## Space Features:

- Exposed brick walls
- Hardwood floors
- 2 private office/conference rooms
- Access to freight elevator

# Property Photos



# Property Photos



4 | 6161 SANTA MONICA BLVD, SUITE 301



# Retail Map

WALK SCORE  
92

TRANSIT SCORE  
61

BIKE SCORE  
74

PUMA

THE GODFREY  
HOTEL HOLLYWOOD

NETFLIX

ARC LIGHT  
CINEMAS

SUNSET  
MEDIA CENTER

COLUMBIA SQUARE  
LIVING

NeueHouse

Emerson  
COLLEGE

NETFLIX

Sunset  
Studios

HOLLYWOOD

SITE

HOLLYWOOD  
Production Center

N EL CENTRO AVE

44,938ATC

SANTA MONICA BLVD



# Contact Info

**JARED SWEDELSON**  
Senior Vice President  
d: 818-742-1632  
m: 818-644-7597  
jswedelson@naicapital.com  
Cal DRE Lic #02105146

**NAI CAPITAL - WEST LOS ANGELES**  
11835 W. Olympic Blvd., Suite 700E  
Los Angeles, CA 90064  
d: 310-806-6100  
f: 310-806-6101  
www.naicapital.com



©NAI Capital Commercial, Inc. Content in this document may include AI generated or altered text, images and/or analysis. No warranty, express or implied, is made as to the accuracy of the information contained herein. This information is submitted subject to errors, omissions, change of price, rental or other conditions, withdrawal without notice, and is subject to any special listing conditions imposed by our principals. Cooperating brokers, buyers, tenants and other parties who receive this document should not rely on it, but should use it as a starting point of analysis, and should independently confirm the accuracy of the information contained herein through a due diligence review of the books, records, files and documents that constitute reliable sources of the information described herein. Unedited images viewable at [naicapital.com](http://naicapital.com) | Cal DRE Lic #02130474

**NAI Capital**  
COMMERCIAL REAL ESTATE SERVICES, WORLDWIDE