

For Lease

JEFFREY R. BECKER CCIM . CPM . RPA

805.653.6794

[jbecker@beckergroup.com](mailto:jbecker@beckergroup.com)

CA DRE #01213236

40 SOUTH ASH STREET | VENTURA, CA 93001 | 805.653.6794 | [BECKERGRP.COM](http://BECKERGRP.COM)





### PROPERTY DESCRIPTION

Executive office suites for lease in the historic Elizabeth Bard Memorial Building in beautiful Downtown Ventura! Prestigious hillside location with spectacular views of the ocean and Channel Islands. High-end office layouts including kitchenettes and private restrooms. Listed on the National Register of Historic Places and is Local City Landmark #19, building features classic Mission Revival architecture among other historical details. Onsite parking included. Walking distance to beaches, restaurants, shopping, City Hall, Majestic Ventura Theater, State Fairgrounds, Amtrak station and much more! Easy access to 101 Fwy.

Suite H: Upgraded office suite in the Historic Bard Hospital Building, consisting of 4 private offices, a conference room with atrium, 2 private restrooms, and a kitchenette. Located on the upper level with direct access to Buena Vista Street. Features ocean views.

### AGENT CONTACT INFO

To find out more, or setup a tour, please contact:  
Jeffrey R. Becker | 805.653.6794 ext. 201 | [jbecker@beckergrp.com](mailto:jbecker@beckergrp.com)  
Hutton Becker | 805.653.6794 ext. 212 | [hbecker@beckergrp.com](mailto:hbecker@beckergrp.com)

**JEFFREY R. BECKER CCIM . CPM . RPA**

**805.653.6794**

[jbecker@beckergrp.com](mailto:jbecker@beckergrp.com)

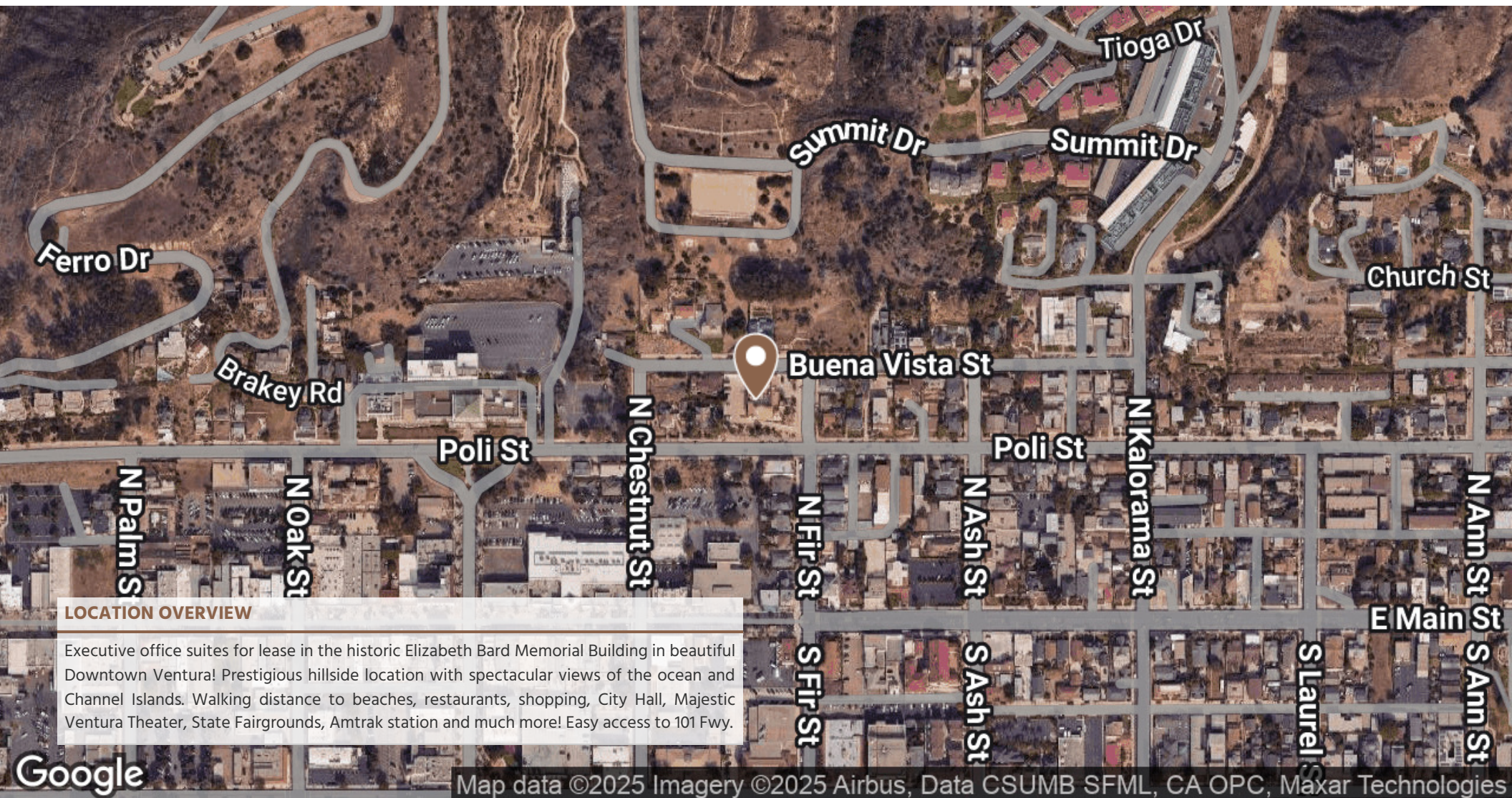
CA DRE #01213236

### OFFERING SUMMARY

Lease Rate:	\$2.35 SF/month (NNN)
NNN Estimate Value:	Est. \$0.51 psf
Available SF:	1,788 SF
Lot Size:	34,000 Acres
Building Size:	17,077 SF

SPACES	LEASE RATE	SPACE SIZE
121-H	\$2.35 SF/month	1,788 SF
121-G	\$2.35 SF/month	1,788 SF





**JEFFREY R. BECKER CCIM . CPM . RPA**

805.653.6794

jbecker@beckergrp.com

CA DRE #01213236



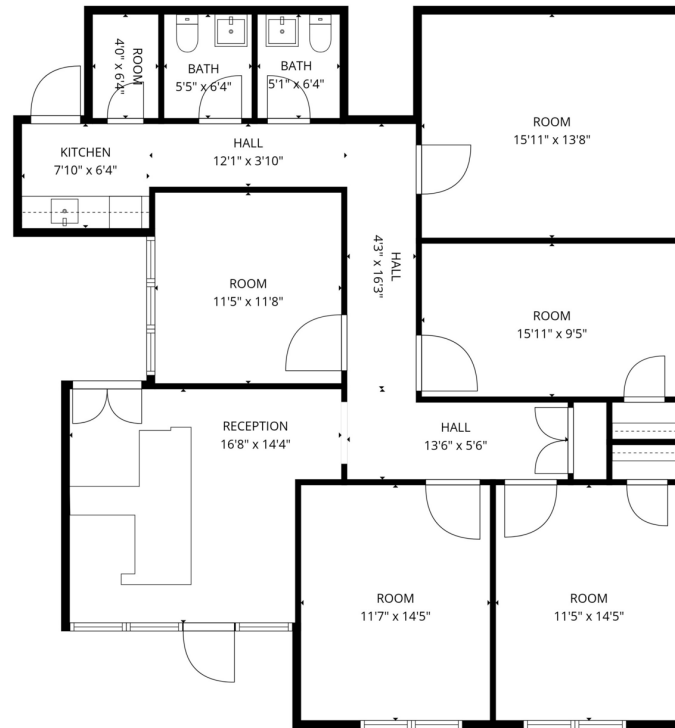


**JEFFREY R. BECKER CCIM . CPM . RPA**

**805.653.6794**

**[jbecker@beckergrp.com](mailto:jbecker@beckergrp.com)**

**CA DRE #01213236**



JEFFREY R. BECKER CCIM . CPM . RPA

805.653.6794

[jbecker@beckergrp.com](mailto:jbecker@beckergrp.com)

CA DRE #01213236