

843 Cherry Street, Norristown, PA

Located 1 block from Route 202/Markley Street



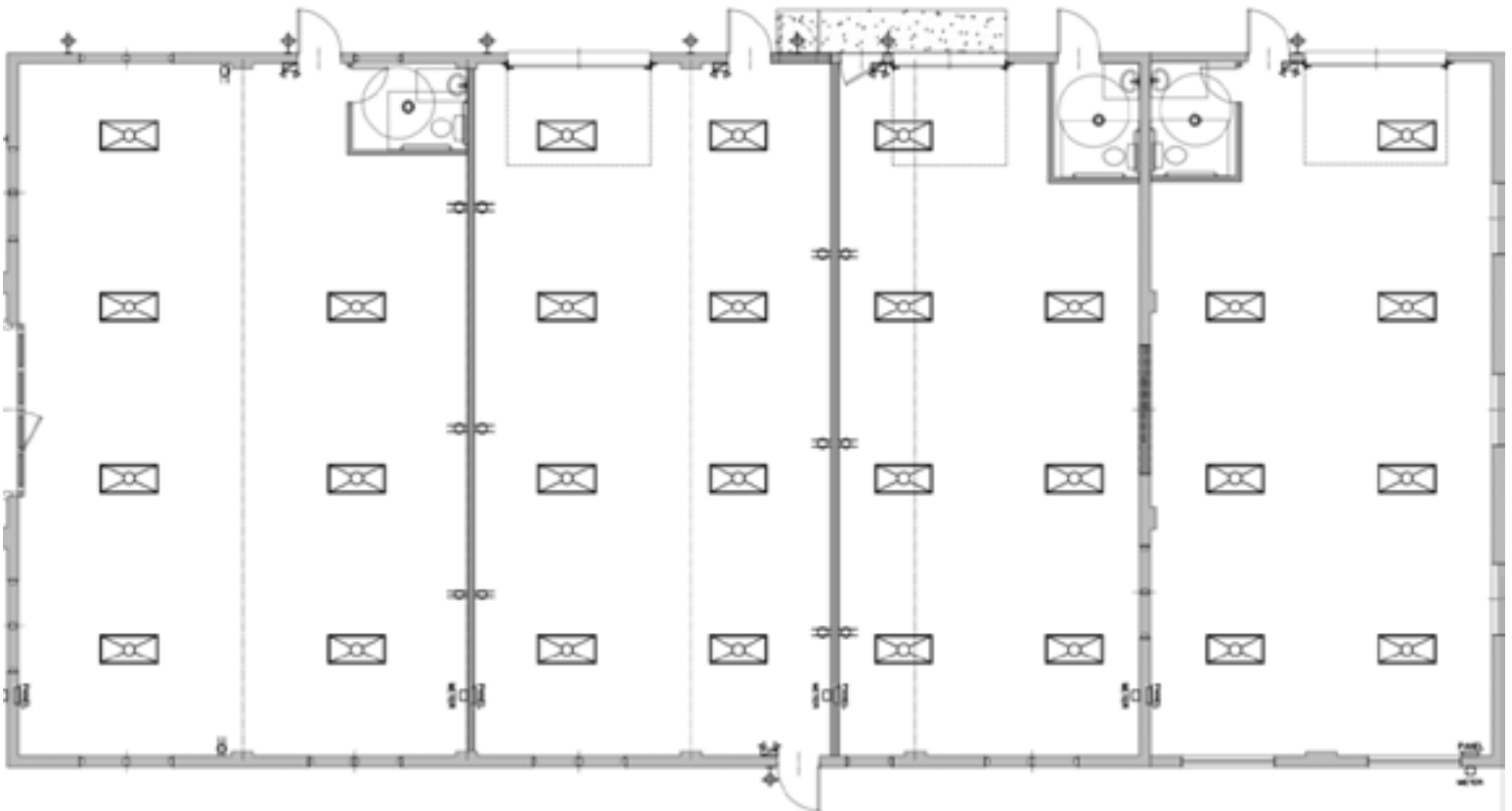
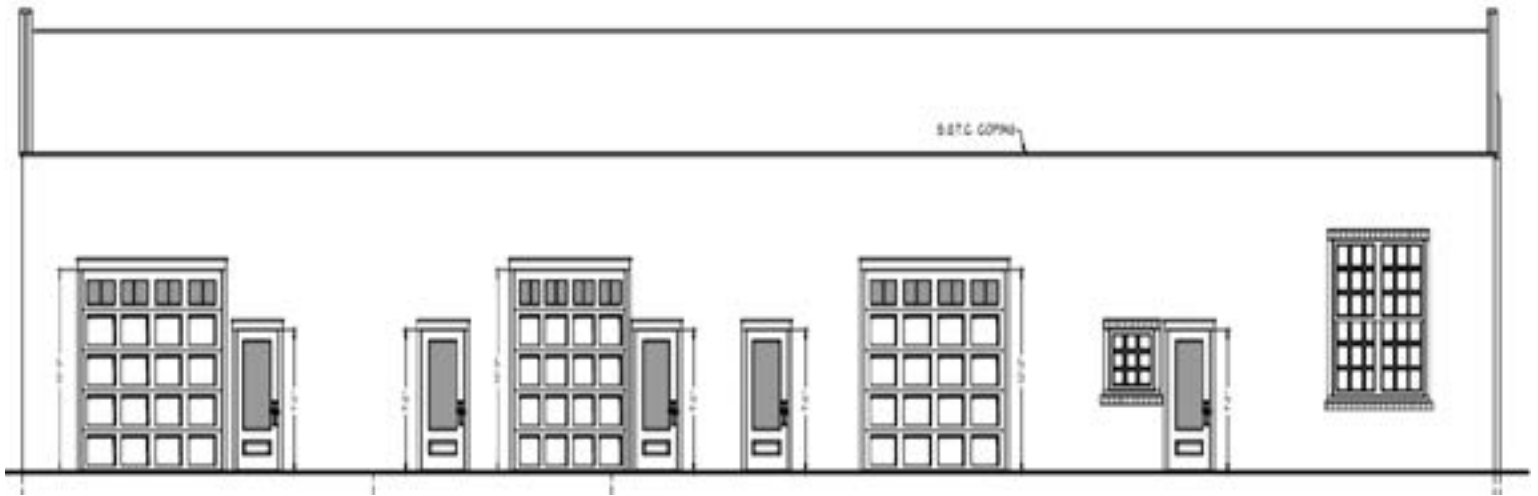
**5,700 SF Newly Renovated
Warehouse & Manufacturing**

**Outside Storage and
Container Storage Available**

- (1) 12'x12' and (3) 10'x10' drive-in doors
- New ADA bathrooms
- New Gas fired ceiling hung Reznor furnaces
- New Roof
- New LED lighting throughout
- Divisible from 1,350 square feet to 5,700 sq. feet
- Each space separately
- Outside storage & truck parking available
- 24/7 access
- Flexible lease term

843 Cherry Street, Norristown, PA

Floor Plans



Spaces from 1,350 SF to 5,700 SF
Plan for illustration purposes only