



610 DEAN STREET



LOCATION

610 Dean Street
Between Carlton and Vanderbilt
Brooklyn, NY 11238



MONTHLY RENT

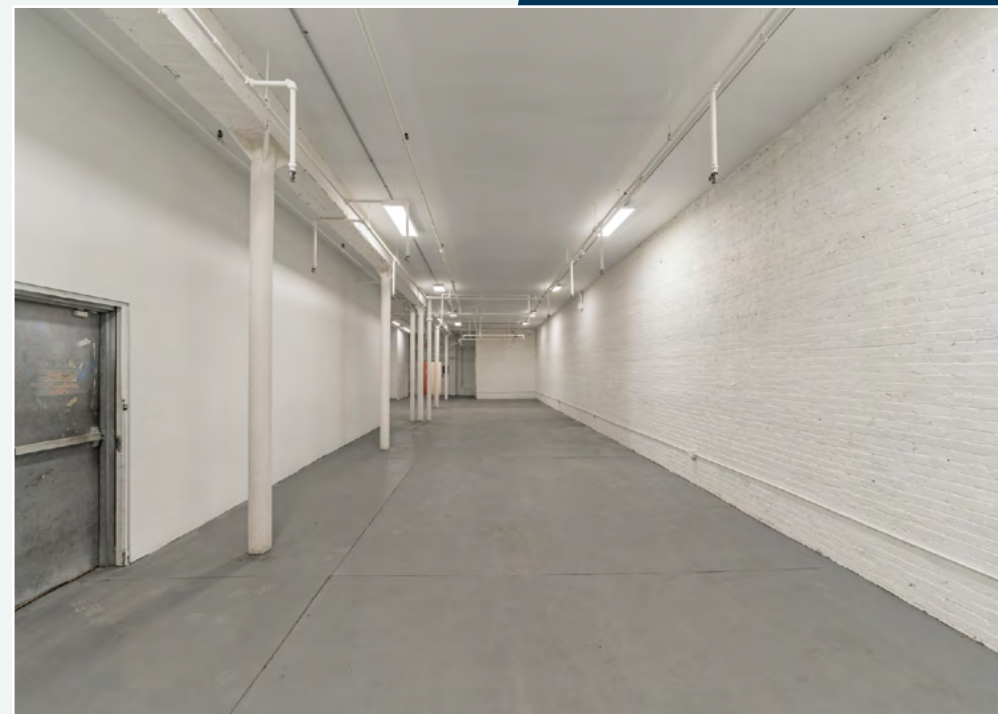
Upon request



SILVERLINE
REALTY GROUP

PROPERTY OVERVIEW

- 3,050 ground floor square feet
- 22' ft. of total frontage on Dean Street
- In-line space situated in Prospect Heights on Dean Street between Carlton and Vanderbilt Avenues
- Steps away from the 2, 3, 4, 5, B, C, D, N, Q, and R
- Close to the Barclay's Center
- Close to LIRR Atlantic Terminal
- Contact listing broker for listing price



EXISTING LAYOUTS

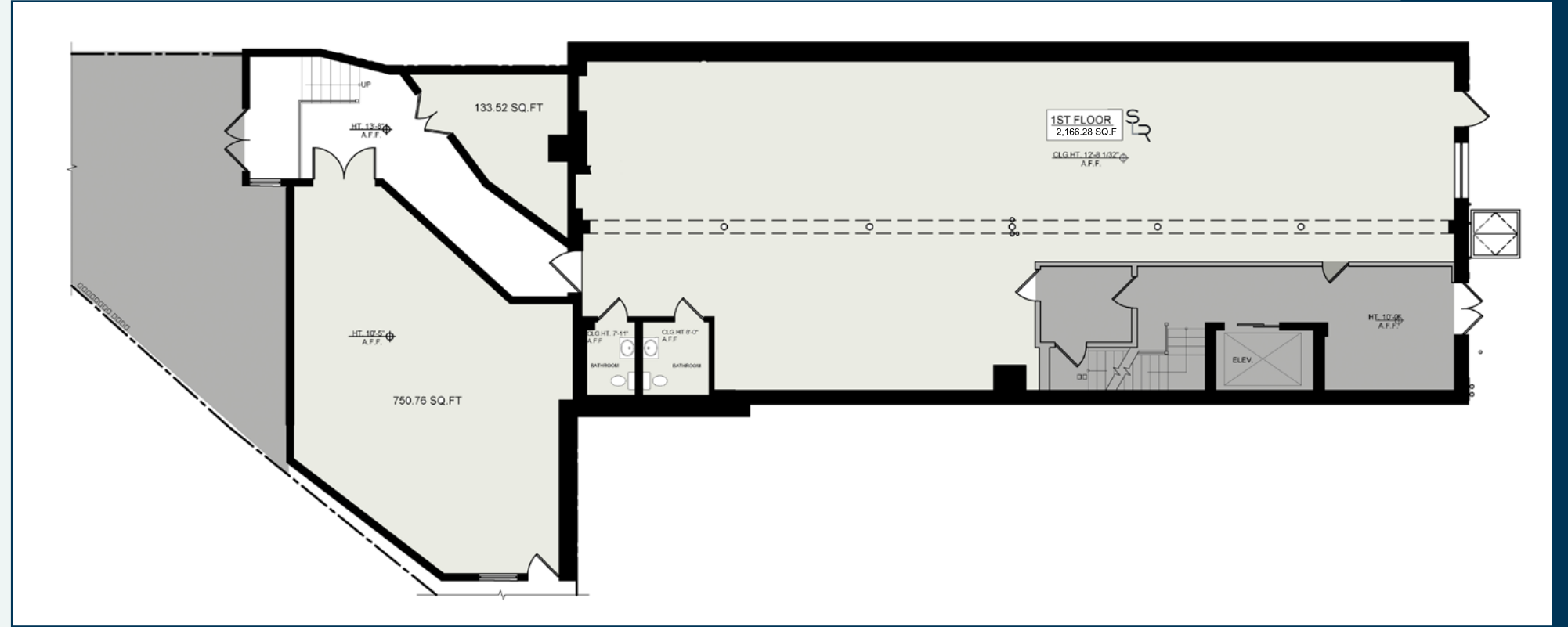


CONCEPTUAL LAYOUTS

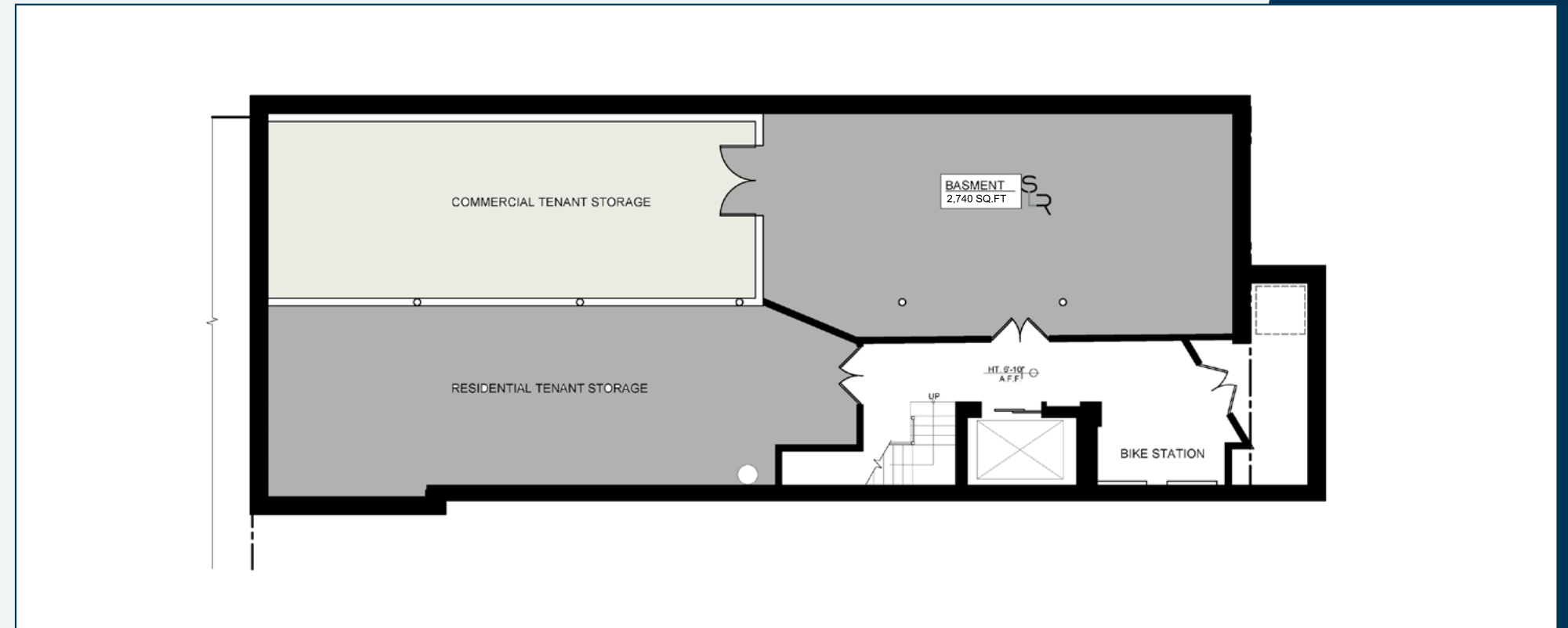


FLOOR PLANS

FIRST FLOOR



BASEMENT

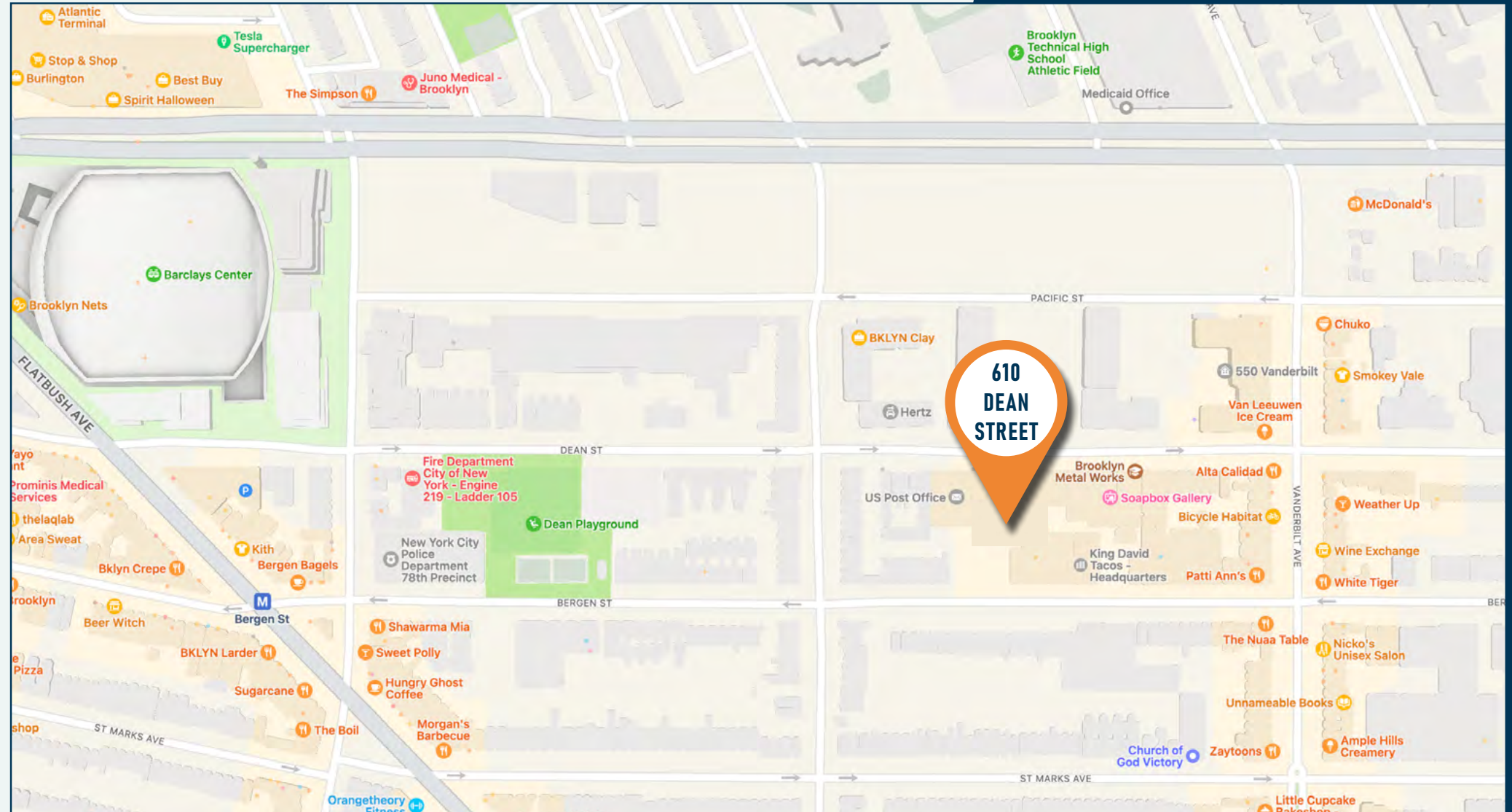


NEIGHBORHOOD OVERVIEW

NEIGHBORS

- Barclay Center
- Atlantic Terminal
- Best Buy
- Target
- Apple
- Hertz
- Van Leeuwen Ice Cream
- Ample Hill Creamery
- Bilt Bar
- Beer Street NY

TRANSPORTATION






**RETAIL SPACE
FOR LEASE**
 SILVERLINE
REALTY GROUP
Richard Silverman
201.204.8258
richard@slrgrp.com

LISTING BROKER

Richard M. Silverman
Real Estate Salesperson
201.204.8258 | richard@slrgrp.com

 **SILVERLINE
REALTY GROUP**