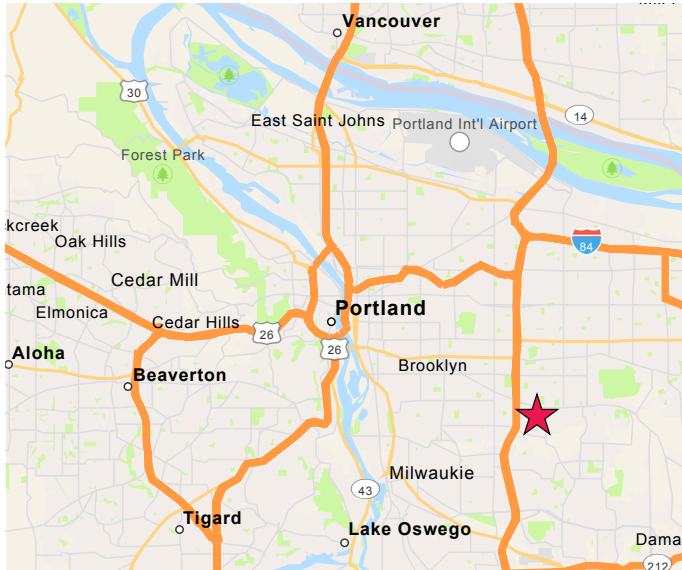


# Industrial Storage Yard

Space for Lease



## Prologis Southeast Logistics Center

6400 SE 101st Avenue, Portland, Oregon 97266

### LOCATION

- Strategically situated between Clackamas and Airport Way submarkets
- Located just east of I-205 and SE 101st Avenue
- 5 miles to I-84, 12 miles to I-5
- 10 miles from Portland International Airport
- 9 miles to Vancouver, Washington

All buildings to be demolished early 2024.



### ADVANTAGES AND AMENITIES

- Immediate north/south access to full service I-205 interchange
- Secured industrial park with 24-hour Tenant access
- Convenient to strong local labor pool
- Located in the Lent's Urban Renewal District

# ±14 Acre Yard

Industrial Yard For Lease



## NEWMARK

### NEWMARK

Mark Hush

mark.hush@nrmk.com  
ph +1 503 972 5517  
cell +1 503 708 4011

Jack Ward

jack.ward@nrmk.com  
ph +1 503 972 5509  
cell +1 503 799 7994  
760 SW 9th Avenue  
Suite 200  
Portland, OR 97205 USA

### ProLogis

Sean Colletta

scolletta@prologis.com>  
ph +1 503 276 7375  
cell +1 503 502 0465  
4380 SW Macadam Ave  
Suite 285  
Portland, OR 97239 USA



### ±14 ACRE YARD AVAILABLE EARLY 2024

- 5 Acre minimum lot size
- Freshly graveled and level yard
- Secured location

- Lay-down yard
- Bulk materials storage
- Heavy industrial zoning

**CALL FOR RATE**

# Industrial/Manufacturing

Space For Lease



## NEWMARK

### NEWMARK

**Mark Hush**

mark.hush@nmrk.com  
ph +1 503 972 5517  
cell +1 503 708 4011

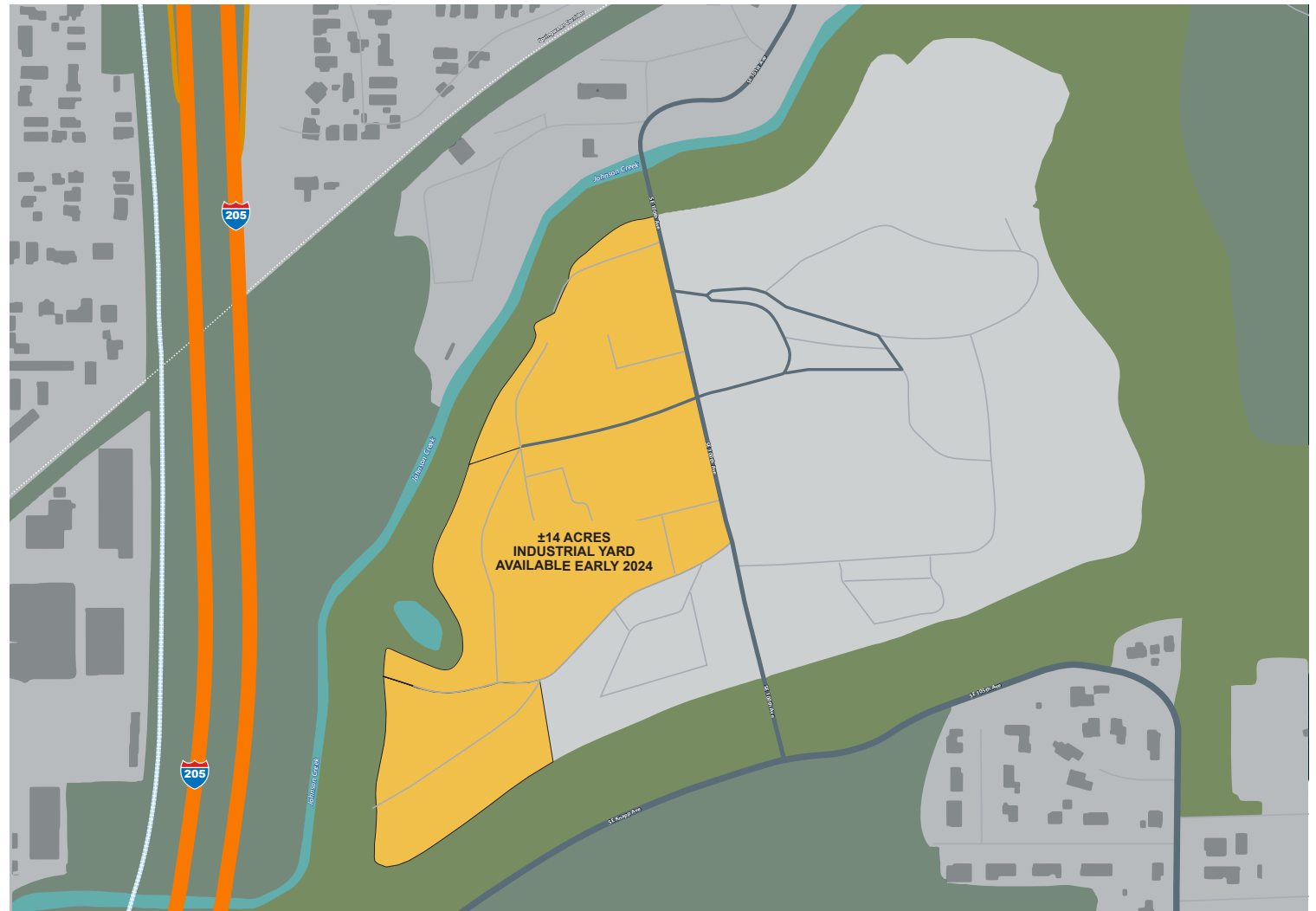
**Jack Ward**

jack.ward@nmrk.com  
ph +1 503 972 5509  
cell +1 503 799 7994  
760 SW 9th Avenue  
Suite 200  
Portland, OR 97205 USA

### ProLogis

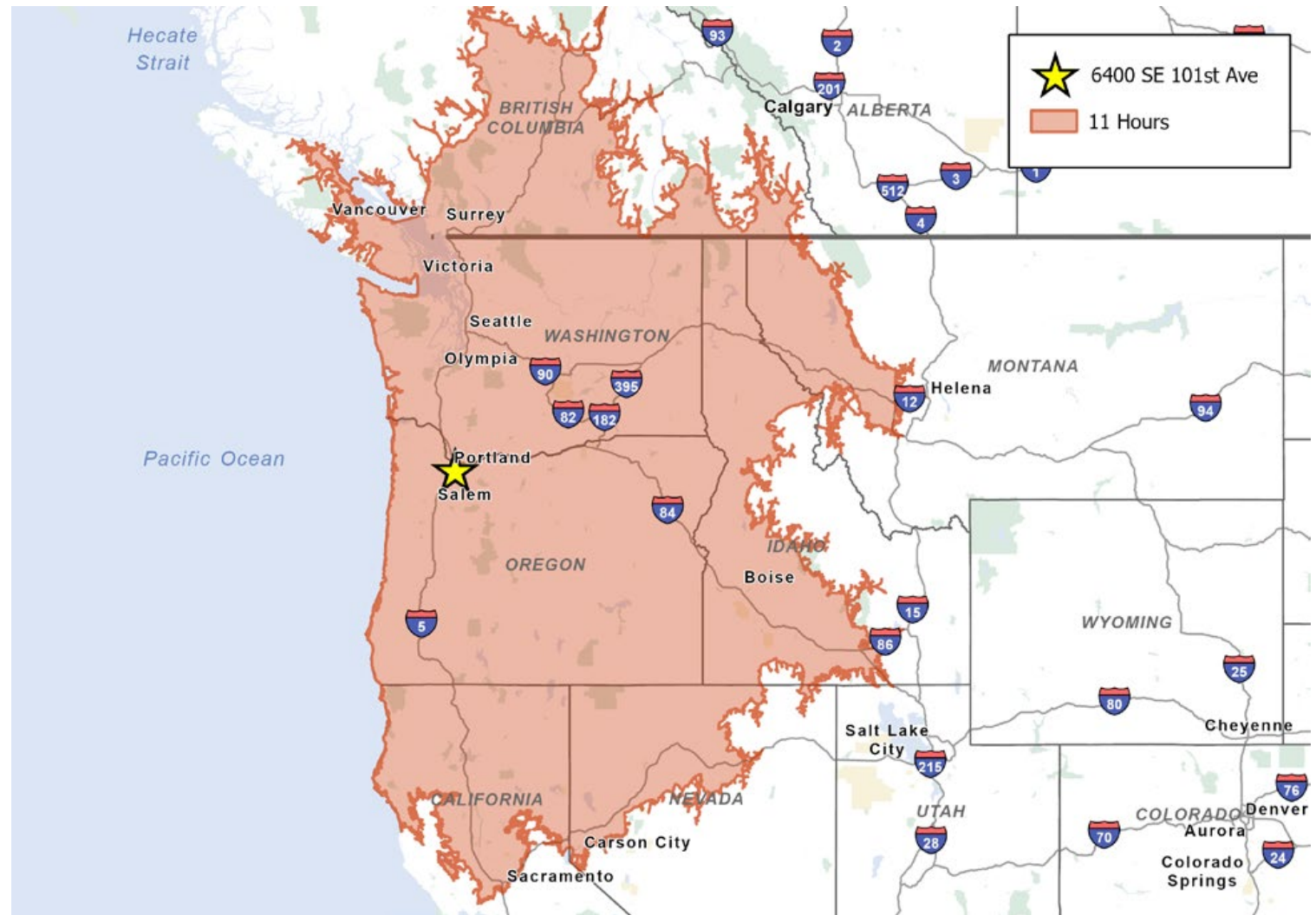
**Sean Colletta**

scolletta@prologis.com  
ph +1 503 276 7375  
cell +1 503 502 0465  
4380 SW Macadam Ave  
Suite 285  
Portland, OR 97239 USA



# Industrial/Manufacturing

Same-day delivery access to all of Oregon and Washington, Northern California



## NEWMARK

### NEWMARK

Mark Hush  
mark.hush@nrmk.com  
ph +1 503 972 5517  
cell +1 503 708 4011

Jack Ward  
jack.ward@nrmk.com  
ph +1 503 972 5509  
cell +1 503 799 7994  
760 SW 9th Avenue  
Suite 200  
Portland, OR 97205 USA

### ProLogis

Sean Colletta  
scolletta@prologis.com  
ph +1 503 276 7375  
cell +1 503 502 0465  
4380 SW Macadam Ave  
Suite 285  
Portland, OR 97239 USA