

INDUSTRIAL SPACE FOR LEASE

400 Mound City Rd, West Memphis, AR



PROPERTY DETAILS

Building SF:	36,909
Office SF:	9,800
Warehouse SF:	27,109
Drive Through bays:	16
Bay Depth:	64-84 feet
Parcel:	9.19 AC
Door Height:	14'
Year Built	1988

PROPERTY SUMMARY

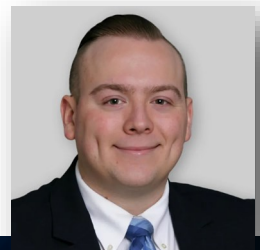
Discover a prime opportunity for your fleet maintenance operations with this expansive facility, perfectly situated on 9 acres of well-located land. This impressive building features 16 drive-through bays, designed specifically for truck repair, ensuring efficiency and convenience for all maintenance activities.

The spacious bays are equipped to accommodate a variety of vehicles, from light-duty trucks to heavy-duty commercial rigs. Each bay is designed for optimal workflow, allowing mechanics to easily access vehicles from both sides, minimizing downtime and enhancing productivity. Contact us today for more information or to schedule a tour!

Danny Miles

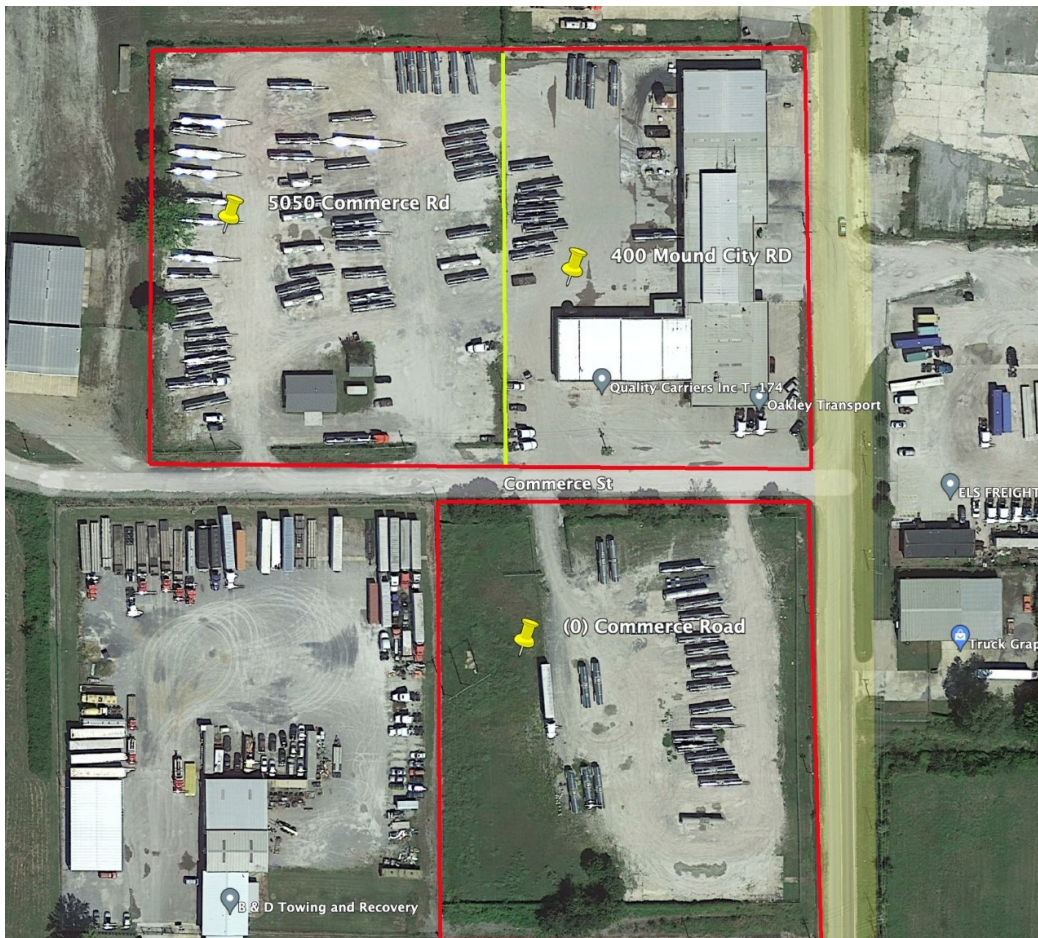
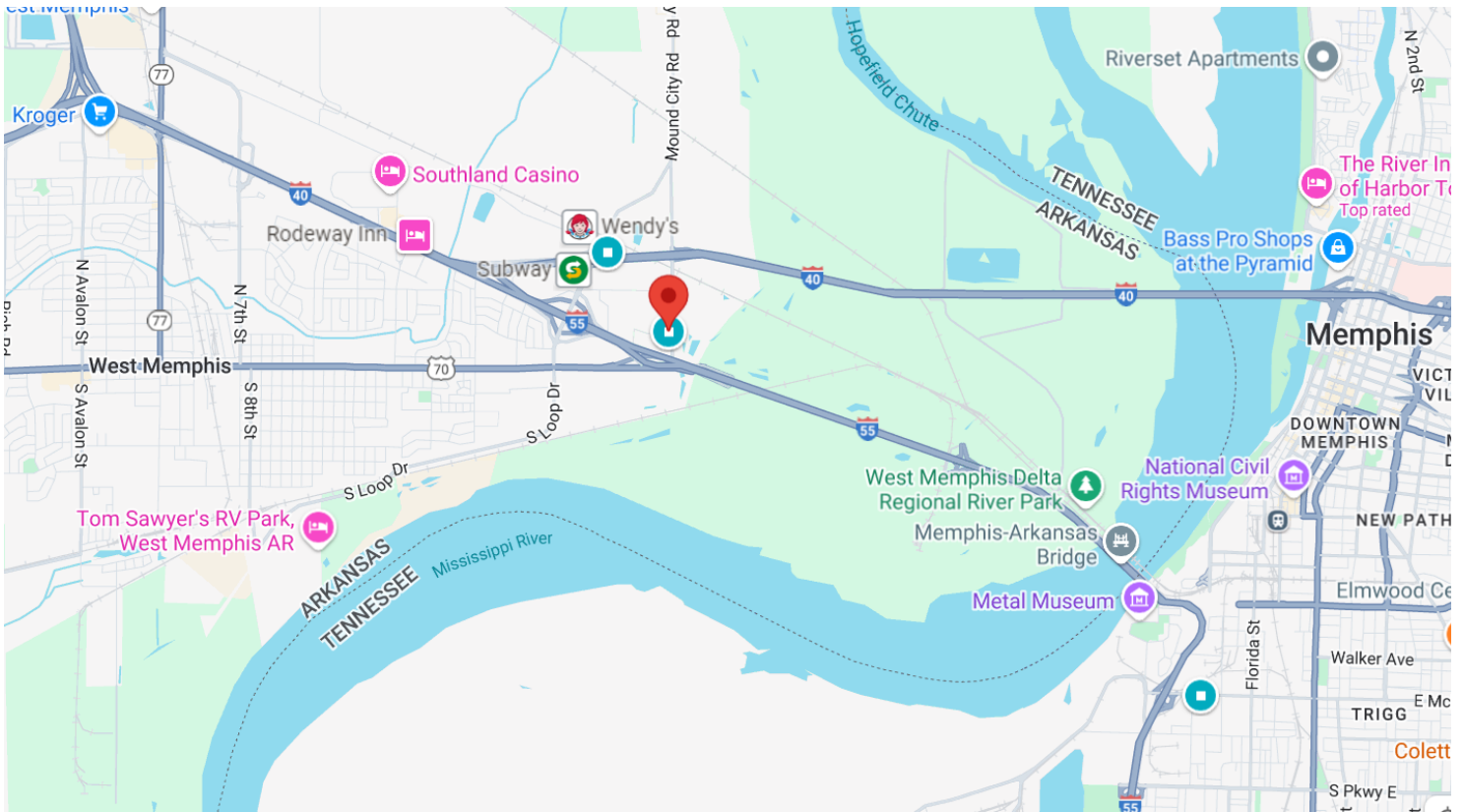
1.315.378.9921

Danny@IronhornEnterprises.com



INDUSTRIAL SPACE FOR LEASE

400 Mound City Rd, West Memphis, AR



INDUSTRIAL SPACE FOR LEASE

400 Mound City Rd, West Memphis, AR



Danny Miles

1.315.378.9921

Danny@IronhornEnterprises.com

www.IronhornEnterprises.com

