



For Lease
95 Beards Lane, Woodstock

Outdoor Storage Land Available

Rail Transloading Service Available

Zach Van Louwe*

Associate Vice President
+1 519 340 2321
zachary.vanlouwe@cbre.com

Ted Overbaugh**

Senior Vice President
+1 519 340 2309
ted.overbaugh@cbre.com

CBRE

Outdoor Storage Land Available

95 Beards Lane, Woodstock

For Lease



Property Details

SIZE 6 Acres
(Will consider 3-4 acre deals)

ZONING M3 General Industrial

OCCUPANCY Available Immediately

ASKING RATE \$4,000 per acre per month

- Fully secure, 24/7 gated site
- Great opportunity for longer term parking for trucking requirements, outdoor storage for heavy equipment or overflow automobile storage
- Woodstock is home to some of the most recognized manufacturers in the region including Toyota, Vuteq, Soprema, Tigercat and ArcelorMittal
- Potential to lease adjacent warehouse space
- Will consider leasing a minimum of 10 trailer parking spaces

SITE HIGHLIGHTS



Outdoor storage yard space that is graded, secured and monitored



Rail transloading service available



Great opportunity for longer term parking or heavy outdoor storage

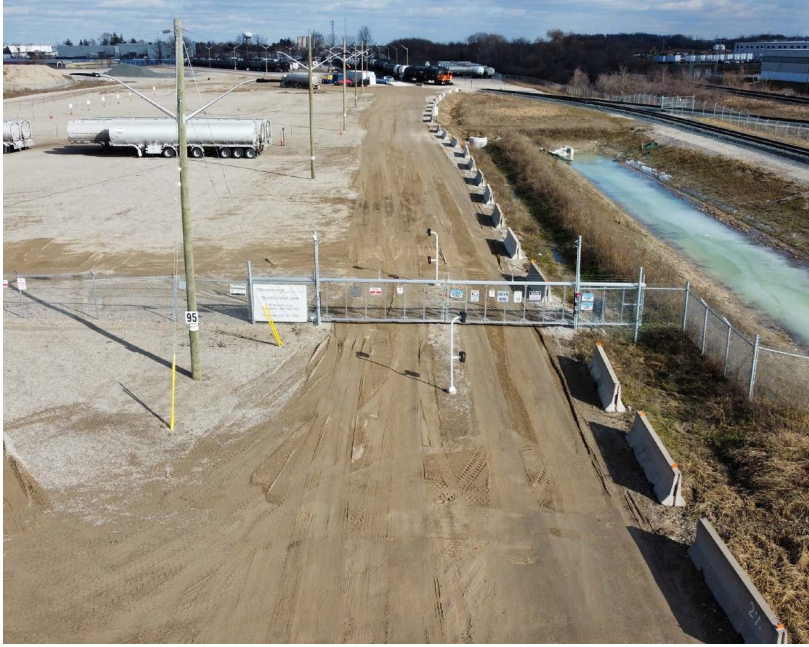


Strategically located 2 km from Highway 401 & 403

Outdoor Storage Land Available

95 Beards Lane, Woodstock

For Lease



For more information, please contact

Zach Van Louwe*

Associate Vice President

+1 519 340 2321

zachary.vanlouwe@cbre.com

Ted Overbaugh**

Senior Vice President

+1 519 340 2309

ted.overbaugh@cbre.com

CBRE Limited, Real Estate Brokerage | 72 Victoria Street S, Suite 200 | Kitchener, ON | N2G 4Y9 | **Broker, *Sales Representative

© 2021 CBRE, Inc. All rights reserved. This information has been obtained from sources believed reliable, but has not been verified for accuracy or completeness. You should conduct a careful, independent investigation of the property and verify all information. Any reliance on this information is solely at your own risk. CBRE and the CBRE logo are service marks of CBRE, Inc. All other marks displayed on this document are the property of their respective owners, and the use of such logos does not imply any affiliation with or endorsement of CBRE. Photos herein are the property of their respective owners. Use of these images without the express written consent of the owner is prohibited. Mapping Sources: Canadian Mapping Services canadamapping@cbre.com; DMTI Spatial, Environics Analytics, Microsoft Bing, Google Earth.

CBRE