



AVAILABLE FOR LEASE



3341

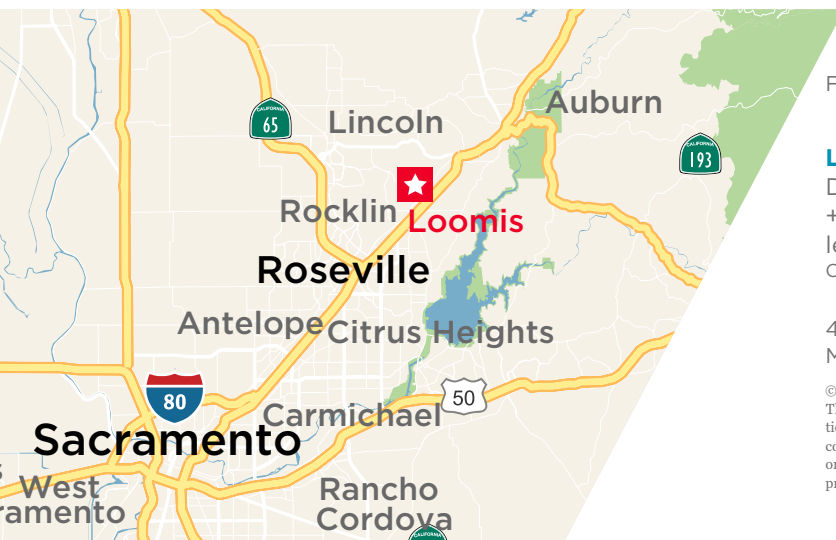
Swetzer Ct, Loomis, CA

FLEX

±5,261 SQ.FT.

PROPERTY HIGHLIGHTS

- Total Available: ±5,261 Sq.Ft.
- Fenced Yard: ±2,500 Sq.Ft.
- Clear Height: ±14' up to ±20'
- Power: Heavy
- Grade Level Door: Two (2) - automatic
- Available Date: 10/1/2024
- Asking Rent: \$1.10 PSF NNN (NNN est \$0.23 PSF)



FOR MORE INFORMATION, PLEASE CONTACT:

LENNY GOLD
Director
+1 916 288 4443
lenny.gold@cushwake.com
CA-LIC #02055534

DAVID NICHOLSON
Managing Director
+1 916 288 4422
david.nicholson@cushwake.com
CA-LIC #01845338

400 Capitol Mall, Suite 1800 | Sacramento, CA
Main +1 916 288 4800 | cushmanwakefield.com

©2024 Cushman & Wakefield. All rights reserved. The information contained in this communication is strictly confidential. This information has been obtained from sources believed to be reliable but has not been verified. No warranty or representation, express or implied, is made as to the condition of the property (or properties) referenced herein or as to the accuracy or completeness of the information contained herein, and same is submitted subject to errors, omissions, change of price, rental or other conditions, withdrawal without notice, and to any special listing conditions imposed by the property owner(s). Any projections, opinions or estimates are subject to uncertainty and do not signify current or future property performance.

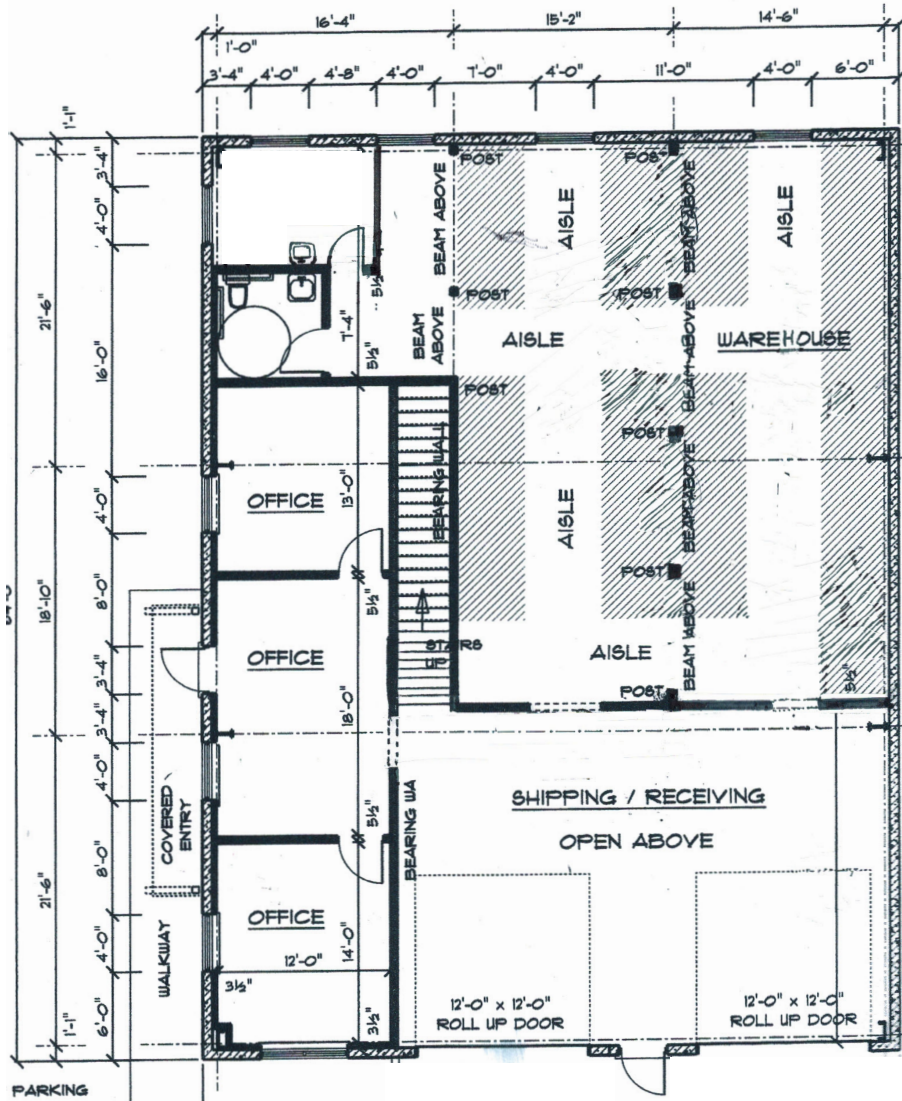
3341 SWETZER COURT

Loomis, CA

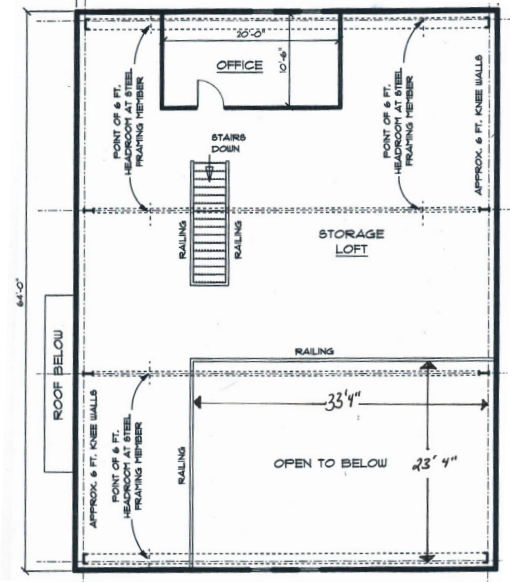
FOR LEASE

FLEX SPACE | ±5,261 SQ.FT.

GROUND LEVEL PLAN



MEZZANINE



FOR MORE INFORMATION, PLEASE CONTACT:

LENNY GOLD

Director
 +1 916 288 4443
 lenny.gold@cushwake.com
 CA-LIC #02055534

DAVID NICHOLSON

Managing Director
 +1 916 288 4422
 david.nicholson@cushwake.com
 CA-LIC #01845338

3341 SWETZER COURT

Loomis, CA

FOR LEASE

FLEX SPACE | ±5,261 SQ.FT.



FOR MORE INFORMATION, PLEASE CONTACT:

LENNY GOLD

Director
+1 916 288 4443
lenny.gold@cushwake.com
CA-LIC #02055534

DAVID NICHOLSON

Managing Director
+1 916 288 4422
david.nicholson@cushwake.com
CA-LIC #01845338

Cushman & Wakefield of California, Inc.
400 Capitol Mall, Suite 1800 | Sacramento, CA
Main +1 916 288 4800 | cushmanwakefield.com

