



LEGACY

COMMERCIAL REAL ESTATE ADVISORS

AVIS HADDAD
Associate Advisor
248.728.4832
Avis@legacycrea.com

DOMINIC SHAMANY
Managing Director
248.450.3259
dominic@legacycrea.com

LAND

11548 EAST 10 MILE ROAD, WARREN, MI 48089

FOR SALE \$150,000 |

LEGACYCREA.COM



CONFIDENTIALITY & DISCLAIMER

All materials and information received or derived from Legacy Real Estate Advisors, LLC its directors, officers, agents, advisors, affiliates and/or any third party sources are provided without representation or warranty as to completeness, veracity, or accuracy, condition of the property, compliance or lack of compliance with applicable governmental requirements, developability or suitability, financial performance of the property, projected financial performance of the property for any party's intended use or any and all other matters.

Neither Legacy Real Estate Advisors, LLC its directors, officers, agents, advisors, or affiliates makes any representation or warranty, express or implied, as to accuracy or completeness of the any materials or information provided, derived, or received. Materials and information from any source, whether written or verbal, that may be furnished for review are not a substitute for a party's active conduct of its own due diligence to determine these and other matters of significance to such party. Legacy Real Estate Advisors, LLC will not investigate or verify any such matters or conduct due diligence for a party unless otherwise agreed in writing.

EACH PARTY SHALL CONDUCT ITS OWN INDEPENDENT INVESTIGATION AND DUE DILIGENCE.

Any party contemplating or under contract or in escrow for a transaction is urged to verify all information and to conduct their own inspections and investigations including through appropriate third party independent professionals selected by such party. All financial data should be verified by the party including by obtaining and reading applicable documents and reports and consulting appropriate independent professionals. Legacy Real Estate Advisors, LLC makes no warranties and/or representations regarding the veracity, completeness, or relevance of any financial data or assumptions. Legacy Real Estate Advisors, LLC does not serve as a financial advisor to any party regarding any proposed transaction. All data and assumptions regarding financial performance, including that used for financial modeling purposes, may differ from actual data or performance. Any estimates of market rents and/or projected rents that may be provided to a party do not necessarily mean that rents can be established at or increased to that level. Parties must evaluate any applicable contractual and governmental limitations as well as market conditions, vacancy factors and other issues in order to determine rents from or for the property.

Legal questions should be discussed by the party with an attorney. Tax questions should be discussed by the party with a certified public accountant or tax attorney. Title questions should be discussed by the party with a title officer or attorney. Questions regarding the condition of the property and whether the property complies with applicable governmental requirements should be discussed by the party with appropriate engineers, architects, contractors, other consultants and governmental agencies. All properties and services are marketed by Legacy Real Estate Advisors, LLC in compliance with all applicable fair housing and equal opportunity laws.

TABLE OF CONTENTS

INVESTMENT OVERVIEW	3
REGIONAL MAP	4
RETAILER MAP	5
AERIAL MAP	6
DEMOGRAPHICS MAP & REPORT	7
BACK PAGE	8

WARREN, MI

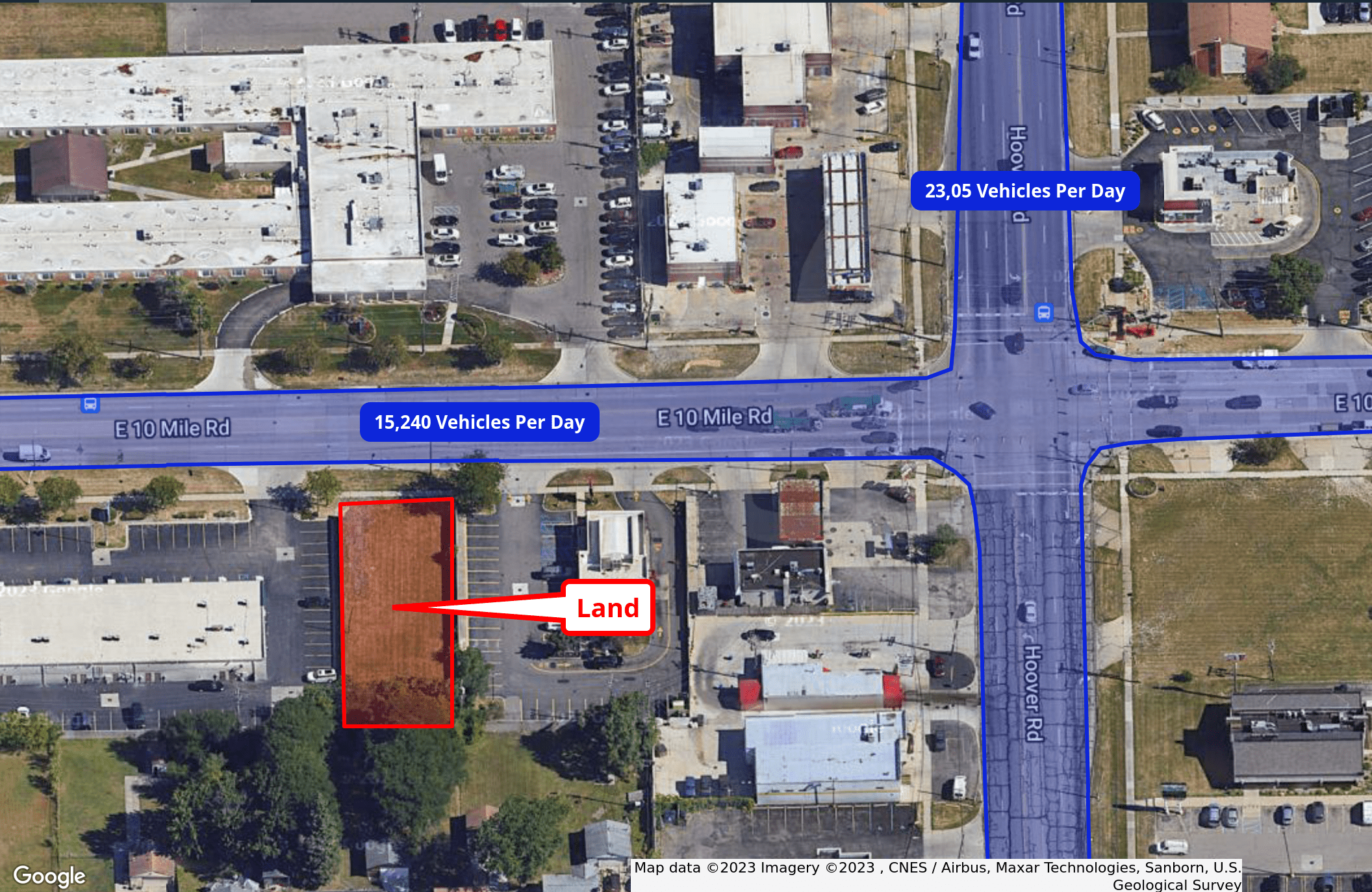
- Land Property - Located in Warren, MI
- C-1 Zoning
- Detroit MSA - Top 15 MSA - Ranked (#14) in The Entire USA
- High Traffic Counts - 15,000+ Vehicles Pass Site Daily on E 10 Mile Rd - 23,000+ Vehicles Pass Site Daily on Hoover Rd
- Dense Demos - 120,000+ People Reside within 3 Mile Radius of Site
- Located in a Dense Retail Corridor Surrounded By Kroger, Home Depot, and Many More
- 37 Minute Drive to Detroit Metropolitan Wayne County Airport

PROPERTY DETAILS

Land Area:	0.27 Acres
Price (PSF):	\$12.43



Map data © 2023 Imagery © 2023 , Airbus, CNES / Airbus, Maxar Technologies, Sanborn, U.S. Geological Survey, USDA/FPAC/GEO



23,05 Vehicles Per Day

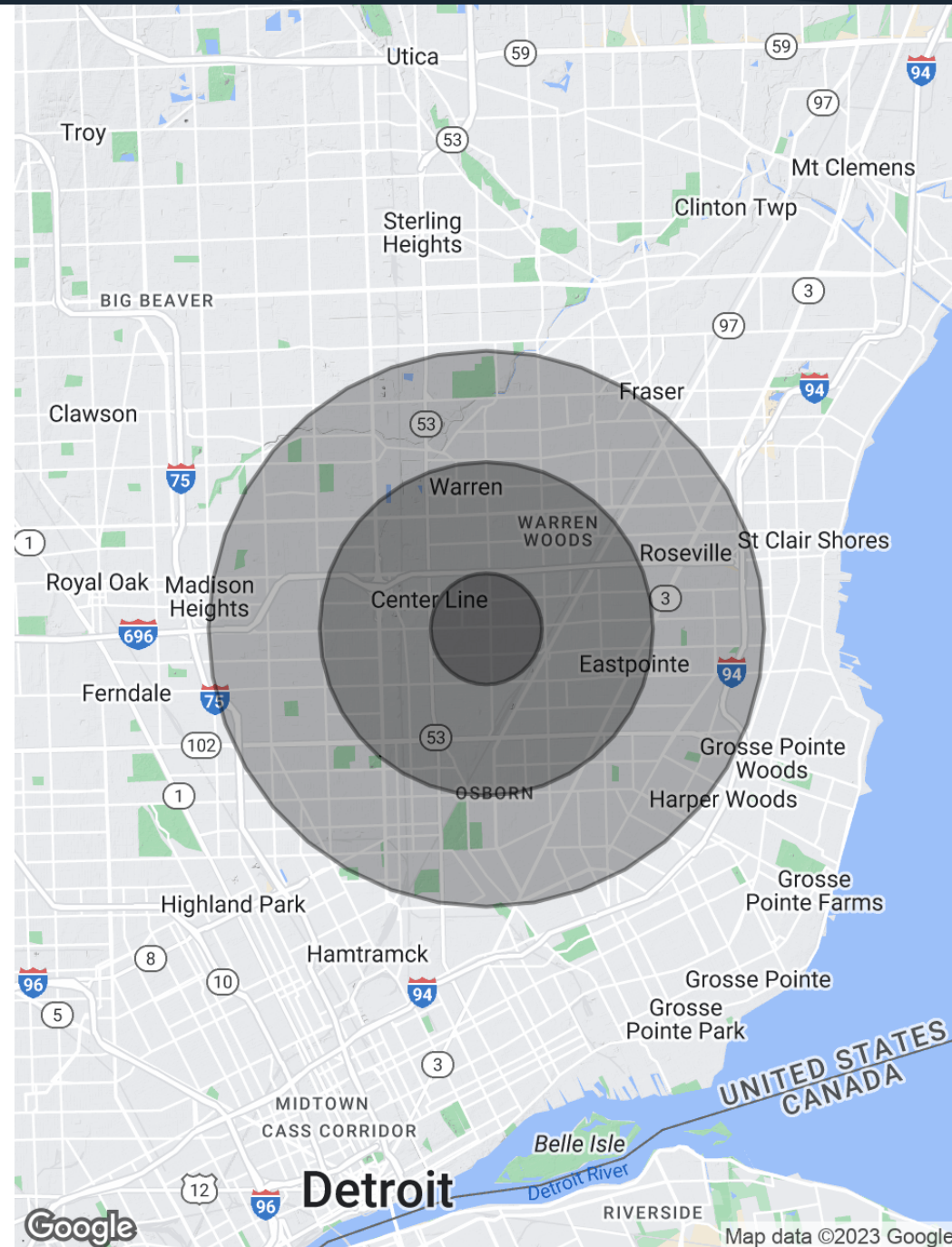
15,240 Vehicles Per Day

Land

POPULATION	1 MILE	3 MILES	5 MILES
Total Population	15,078	123,810	367,408
Average Age	41.2	37.2	37.6
Average Age (Male)	40.9	36.0	35.8
Average Age (Female)	42.2	38.9	39.6

HOUSEHOLDS & INCOME	1 MILE	3 MILES	5 MILES
Total Households	6,322	47,861	141,619
# of Persons per HH	2.2	2.2	2.2
Average HH Income	\$54,822	\$60,301	\$60,451
Average House Value	\$94,823	\$94,977	\$97,147

* Demographic data derived from 2020 ACS - US Census





LEGACY

COMMERCIAL REAL ESTATE ADVISORS

AVIS HADDAD
Associate Advisor
248.728.4832
Avis@legacycrea.com

DOMINIC SHAMANY
Managing Director
248.450.3259
dominic@legacycrea.com

LEGACYCREA.COM

29777 Telegraph Rd Suite 4526
Southfield, MI 48034



E 10 Mile Rd

E 10 Mile Rd

E 10 Mile Rd

Metter Ave

Metter Ave

Metter Ave

Metter Ave