

# TEN100

Full 24th Floor Sublease Opportunity in Century City

10100 Santa Monica Blvd



# Availability Details



Term: Thru 10/31/2027



Parking: 3.5/1,000

85 unreserved parking passes



FF&E: Negotiable



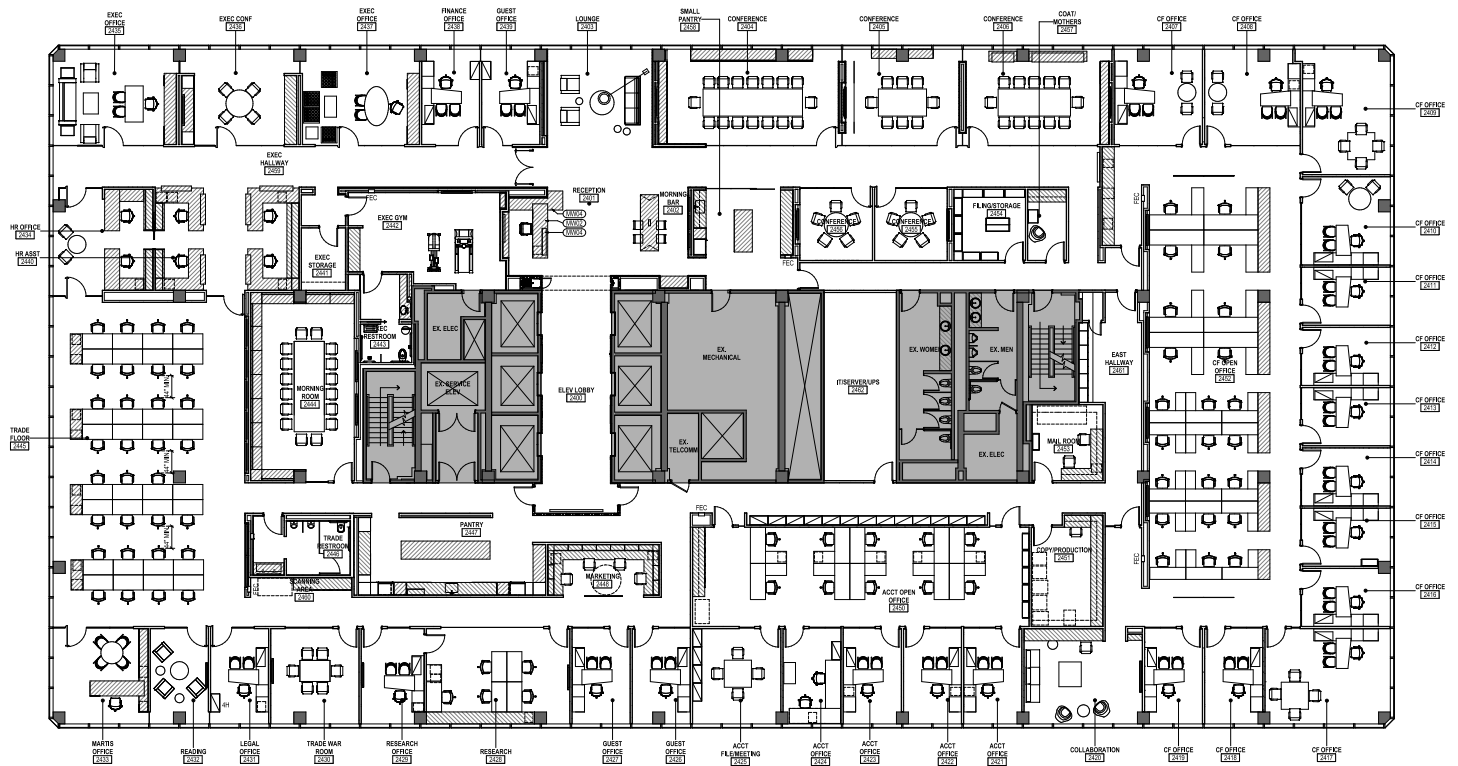
Asking Rate: Withheld



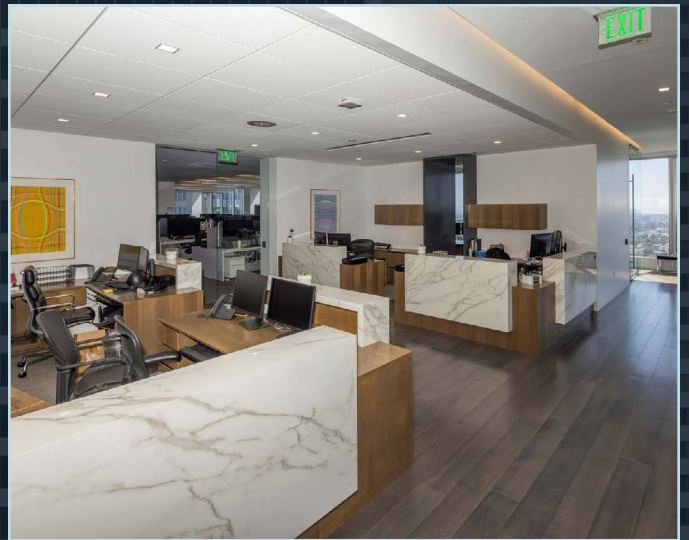
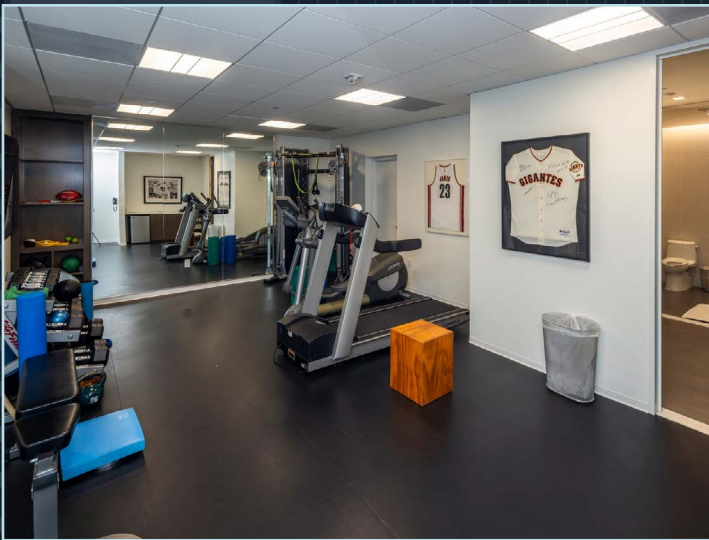
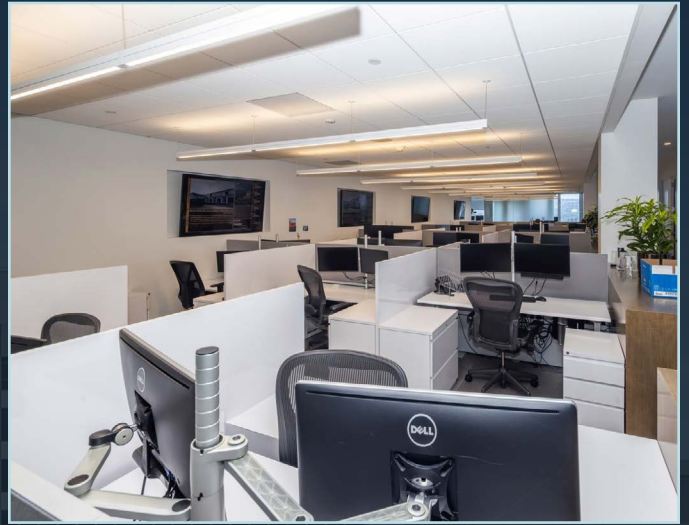
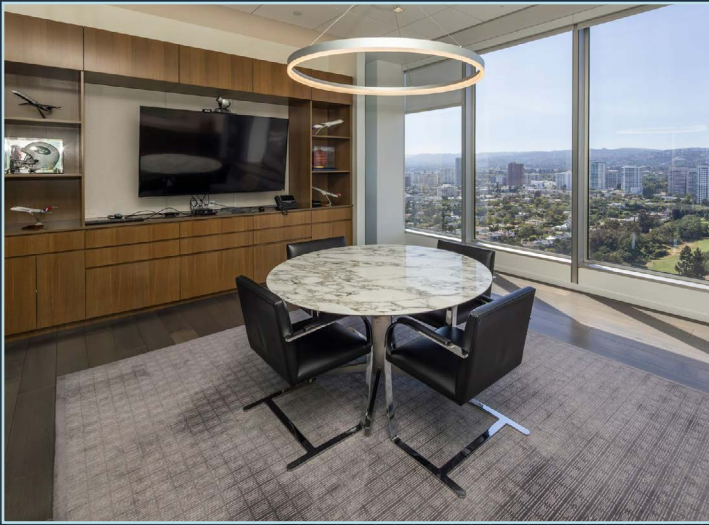
Available Size: 24,203 SF



# 24th floor



 Virtual Tour





Westfield  
CENTURY CITY

H&M

Javier's  
FINE JEWELRY  
OF HONG KONG

california  
PIZZA KITCHEN

BLUE BOTTLE  
COFFEE

UNDER ARMOUR

amc

ZARA

macy's

THE COFFEE BEAN  
& TEA LEAF

CAFE  
LANDWER  
est. 1910

sweetgreen

john varvatos

SHAKE SHACK

tocaya  
organica

鼎泰豐  
DIN TAI FUNG

EQUINOX  
FITNESS CLUBS

85  
85°C Bakery Cafe

SEPHORA

Gelson's

NORDSTROM

EATALY  
ITALY 1911

Del Frisco's  
DOUBLE EAGLE  
STEAKHOUSE

Cuvée

hinoki & the bird

MENDOCINO FARMS  
sandwich market

HABANERO  
GRILL

Starbucks

JOSS  
CUISINE

nerano

RONI'S  
RESTAURANT & BAR  
Since 1981

THE PENINSULA  
BEVERLY HILLS

the  
BEVERLY HILTON

TEMPURA ENDO  
kyoto style

Da Carla Ristorante Italiano & Caffè

W  
WALDORF ASTORIA  
BEVERLY HILLS

10100 Santa Monica Blvd,  
Los Angeles, CA





## 10100 Santa Monica Blvd

**Scott Becket**  
Managing Director

T +1 310 595 3650  
scott.becket@jll.com  
LIC #01837898

**Mike McRoskey**  
Managing Director

T +1 310 595 3820  
mike.mcroskey@jll.com  
LIC #0751604

Although information has been obtained from sources deemed reliable, JLL does not make any guarantees, warranties or representations, express or implied, as to the completeness or accuracy as to the information contained herein. Any projections, opinions, assumptions or estimates used are for example only. There may be differences between projected and actual results, and those differences may be material. JLL does not accept any liability for any loss or damage suffered by any party resulting from reliance on this information. If the recipient of this information has signed a confidentiality agreement with JLL regarding this matter, this information is subject to the terms of that agreement. ©2025 Jones Lang LaSalle Brokerage, Inc. All rights reserved.

