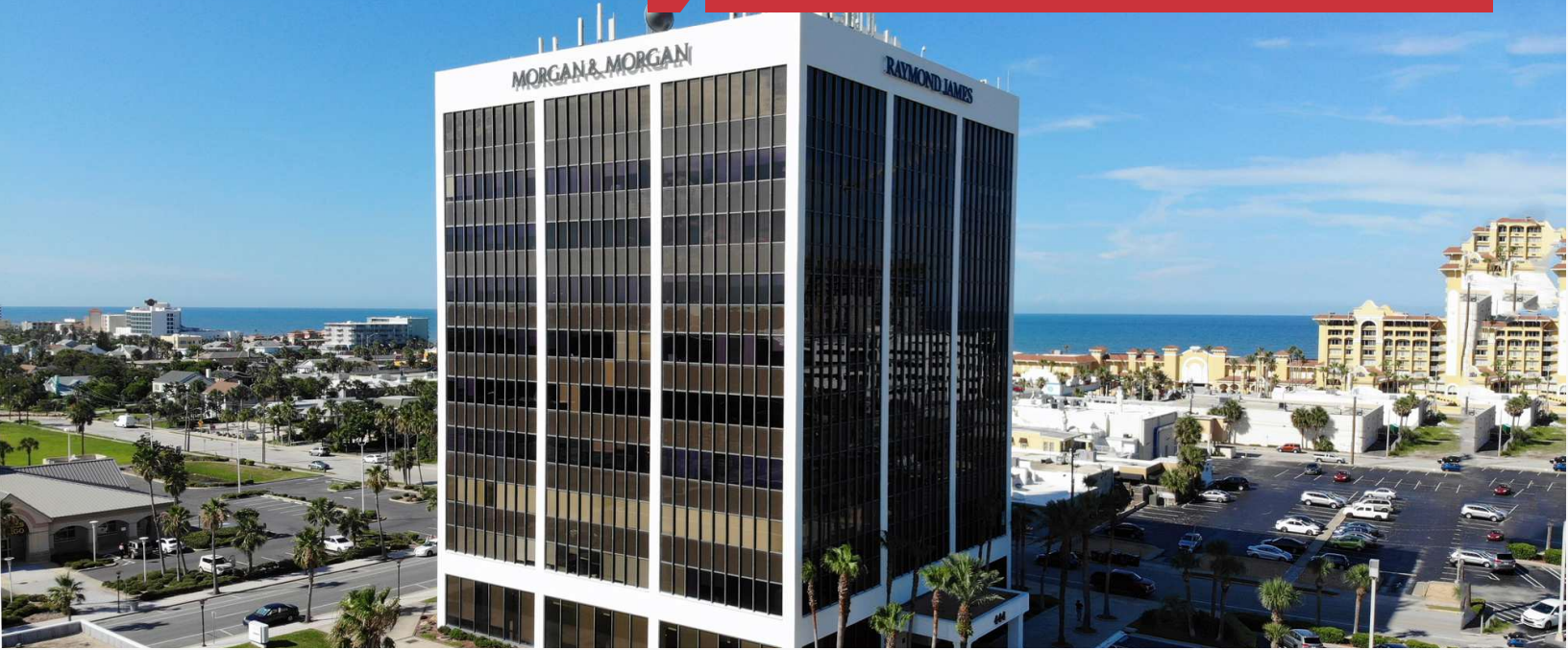


For Lease

Professional Office Space

527 - 6,989 SF | Negotiable



444 Seabreeze Blvd

Daytona Beach, Florida 32118

Property Highlights

- Daytona's most professional, upscale office address
- Views of the Atlantic Ocean & Intracoastal Waterway
- Walking distance from restaurants and beachside commercial district
- Close to A1A, courthouse facilities, city offices, downtown Daytona, hospitals and lodging
- New Daytona Hotel and Conference Center project being constructed two blocks east of the property
- Ample parking for employees and visitors

PROPERTY SUMMARY

Available SF	527 - 6,989 SF
Building Size	122,330 SF



Lease Rate: Contact Broker

For more information

Brian Adair

O: 386 506 0025

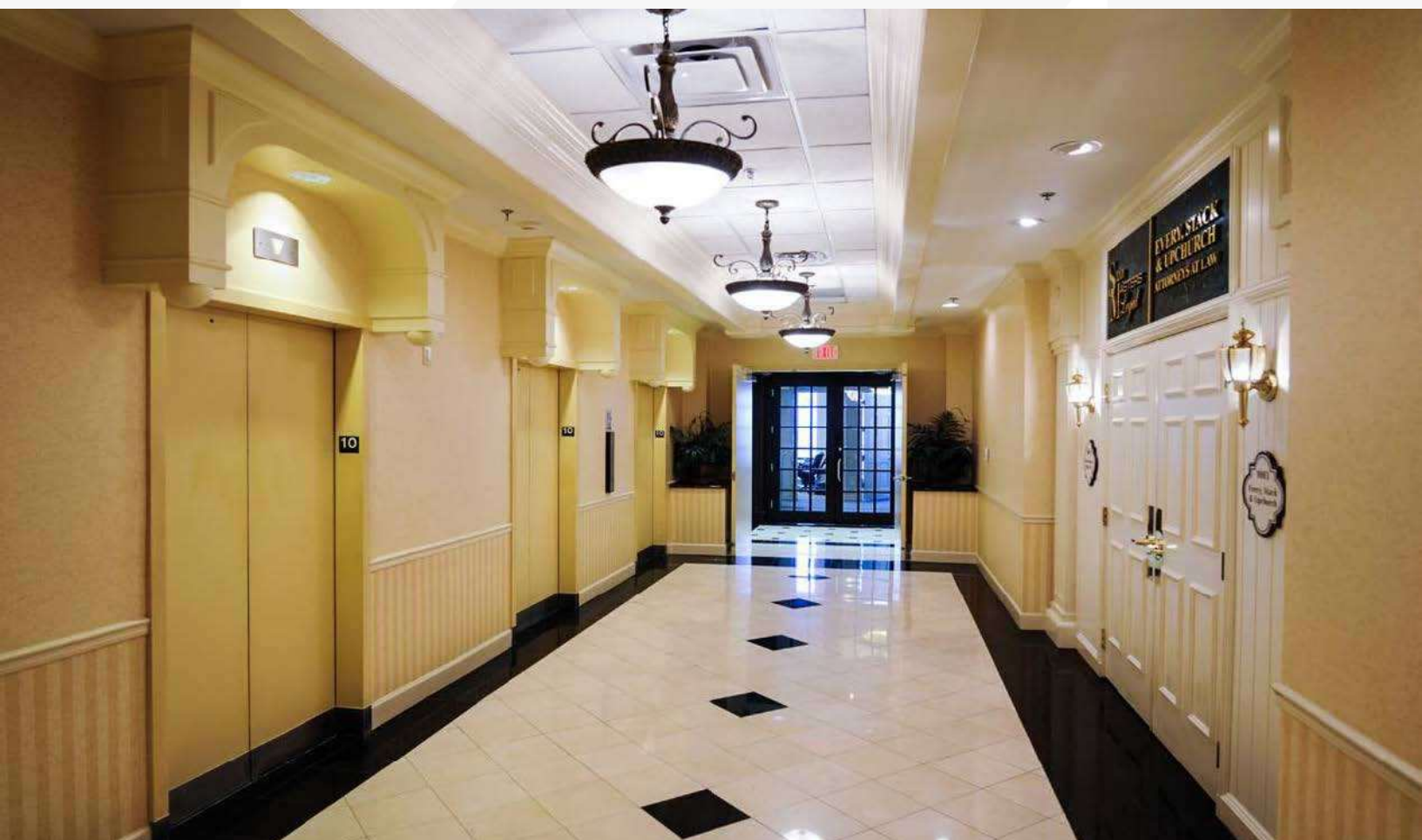
badair@realvest.com

Available Spaces

Lease Rate: CONTACT BROKER Total Space: 527 - 6,989 SF
 Lease Type: Full Service Lease Term: Negotiable

Space	Space Use	Lease Rate	Size (SF)	Comments
Suite 432	Office Building	Contact Broker	587 SF	Immediately Available
Suite 435	Office Building	Contact Broker	712 SF	Immediately available
Suite 470	Office Building	Contact Broker	1,390 SF	Immediately available
Suite 620	Office Building	Contact Broker	667 SF	Intracoastal view
Suite 645	Office Building	Contact Broker	1,083 SF	Ocean and Intracoastal views
Suite 760	Office Building	Contact Broker	527 SF	Ocean view
Suite 860	Office Building	Contact Broker	1,063 - 2,133 SF	Ocean view Available with suite 870 for a total of 2,133 SF
Suite 870	Office Building	Contact Broker	1,070 - 2,133 SF	Ocean view Available with suite 860 for a total of 2,133 SF
Suite 1000	Office Building	Contact Broker	6,989 SF	Ocean view

Additional Photos



Location Maps

