

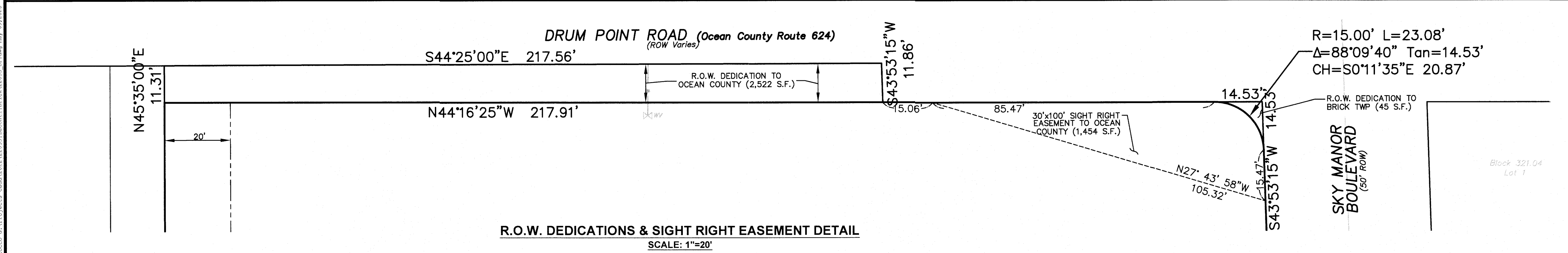
**PARKING NOTES:**  
1. THE PARKING AREA SHALL BE ENTIRELY SHARED PARKING BETWEEN THE RESIDENTIAL AND NON RESIDENTIAL UNITS.

THIS IS TO CERTIFY THAT THE WATER AND SEWER DESIGN CONFORMS WITH THE RULES AND REGULATIONS OF THE BRICK TOWNSHIP MUNICIPAL UTILITIES AUTHORITY.  
ALINA FERREIRA, P.E. SUPERVISOR - ENGINEERING DIVISION  
BRICK UTILITIES' FILE# \_\_\_\_\_ DATE \_\_\_\_\_

THE SITE FOR WHICH MAJOR SITE PLAN APPROVAL WAS GRANTED BY THE BRICK TOWNSHIP BOARD OF ADJUSTMENT AS MEMORIALIZED BY RESOLUTION #R-68-2024 DATED 12-18-2024 SHALL BE MAINTAINED AS ORIGINALLY APPROVED.

APPROVED AS A PRELIMINARY & FINAL MAJOR SITE PLAN BY THE BRICK TOWNSHIP BOARD OF ADJUSTMENT: (CASE NO. \_\_\_\_\_)

CHAIRMAN \_\_\_\_\_ DATE \_\_\_\_\_  
SECRETARY \_\_\_\_\_ DATE \_\_\_\_\_  
ENGINEER \_\_\_\_\_ DATE \_\_\_\_\_



3	5/9/25	REVISED PER RESOLUTION COMPLIANCE	CC
2	1/2/25	REVISED PER RESOLUTION COMPLIANCE, BTMUA & COUNTY COMMENTS	CC
1	7/31/24	REVISED PER TOWNSHIP, COUNTY, AND BTMUA COMMENTS	CC
NO.	DATE	REVISION DESCRIPTION	BY

**Lindstrom, Diessner & Carr, P.C.**  
ENGINEERING ♦ SURVEYING ♦ PLANNING  
136 Drum Point Road • Suite 6 • Brick, NJ 08723 • Tel.(732)477-8900 • Fax.(732)477-8026 • info@LDCpc.com

**JEFFREY J. CARR**  
PROFESSIONAL ENGINEER N.J. LIC. NO. 24602815800  
PROFESSIONAL PLANNER N.J. LIC. NO. 33100276400

**PRELIMINARY & FINAL MAJOR SITE PLAN**  
**SITE PLAN**  
**JOANNE MARIE / DRUM POINT**  
**LOTS 1 & 3 BLOCK 323.04 LOT 22 BLOCK 321.05**  
**TOWNSHIP OF BRICK OCEAN COUNTY NEW JERSEY**

DRAWN BY:	SCALE:	DATE:	SHEET:	PROJECT:
CC	1"=20'	6/20/2024	3 OF 14	22033

Source: G:\Projects-GDM\3232\3231\_LandUse1\_Brick\323231\_SitePlan.dwg, May 09, 2025, - 10:24am