

**5850 MERCURY DRIVE  
DEARBORN, MICHIGAN**

**HI-TECH FOR SALE OR LEASE**

For Sale: 80,670 Square Feet

For Lease: 34,516 Square Feet



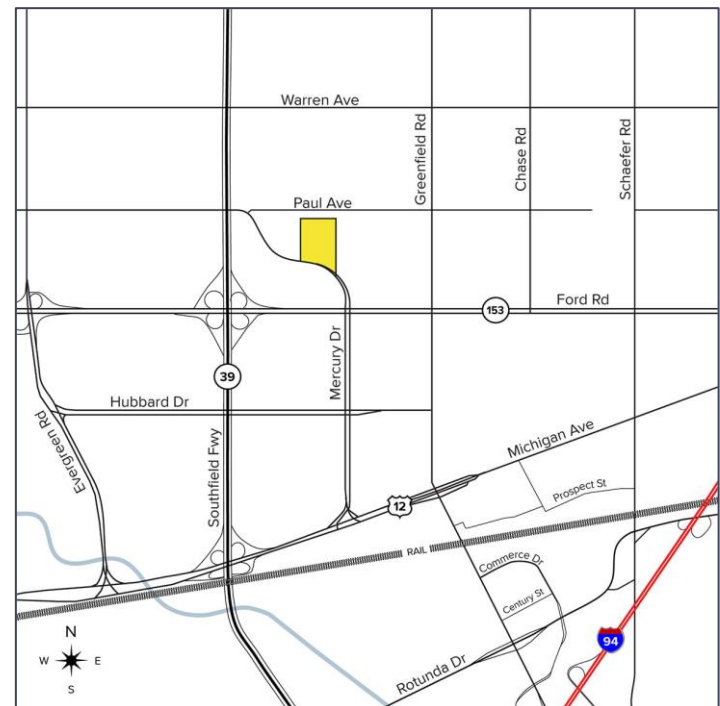
**SIGNATURE  
ASSOCIATES**  
KNOW SIGNATURE | KNOW RESULTS

**FAIRLANE NORTH TECHNOLOGY PARK**



## PROPERTY FEATURES

- 34,516 square feet available for lease
- (1) 8' x 8' grade level door
- Beautiful flex office with large cafeteria, (2) coffee bars, (2) large conference rooms, (15) private offices, copy room, and utility room
- Near Ford World Headquarters and 25 minutes to Canada
- Sale possible – bundled with 15041 S. Commerce Drive in Dearborn
- Zoned Tech/Research
- 1500 amps, 480 volts, 600 volts available
- One month security deposit to credit tenant
- Lease Rate: \$12.25/sq. ft. NNN



For more information, please contact:

**JACK TOWNSEND**

(248) 948 0115

[jtownsend@signatureassociates.com](mailto:jtownsend@signatureassociates.com)

**CHRIS SECONTINE**

(248) 799 3174

[csecontine@signatureassociates.com](mailto:csecontine@signatureassociates.com)

**SIGNATURE ASSOCIATES**

One Towne Square, Suite 1200

Southfield, MI 48076

[www.signatureassociates.com](http://www.signatureassociates.com)



# 5850 Mercury Drive – Dearborn, Michigan

## Hi-Tech For Sale or Lease

For Lease –  
34,516 SF  
For Sale –  
80,670 SF

### Interior Photos



For more information, please contact:

**JACK TOWNSEND**

(248) 948 0115

[jtownsend@signatureassociates.com](mailto:jtownsend@signatureassociates.com)

**CHRIS SECONTINE**

(248) 799 3174

[csecontine@signatureassociates.com](mailto:csecontine@signatureassociates.com)

**SIGNATURE ASSOCIATES**

One Towne Square, Suite 1200

Southfield, MI 48076

[www.signatureassociates.com](http://www.signatureassociates.com)

Information is subject to verification and no liability for errors or omissions is assumed. Price is subject to change and listing withdrawal.

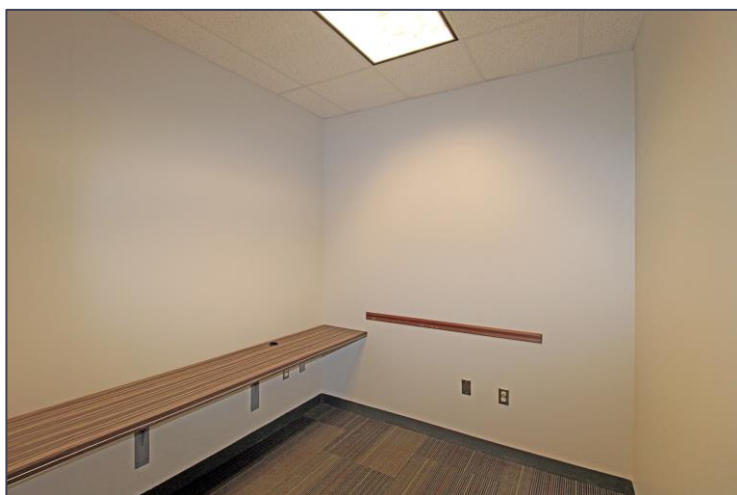


# 5850 Mercury Drive – Dearborn, Michigan

## Hi-Tech For Sale or Lease

For Lease –  
34,516 SF  
For Sale –  
80,670 SF

### Interior Photos



For more information, please contact:

**JACK TOWNSEND**

(248) 948 0115

[jtownsend@signatureassociates.com](mailto:jtownsend@signatureassociates.com)

**CHRIS SECONTINE**

(248) 799 3174

[csecontine@signatureassociates.com](mailto:csecontine@signatureassociates.com)

**SIGNATURE ASSOCIATES**

One Towne Square, Suite 1200

Southfield, MI 48076

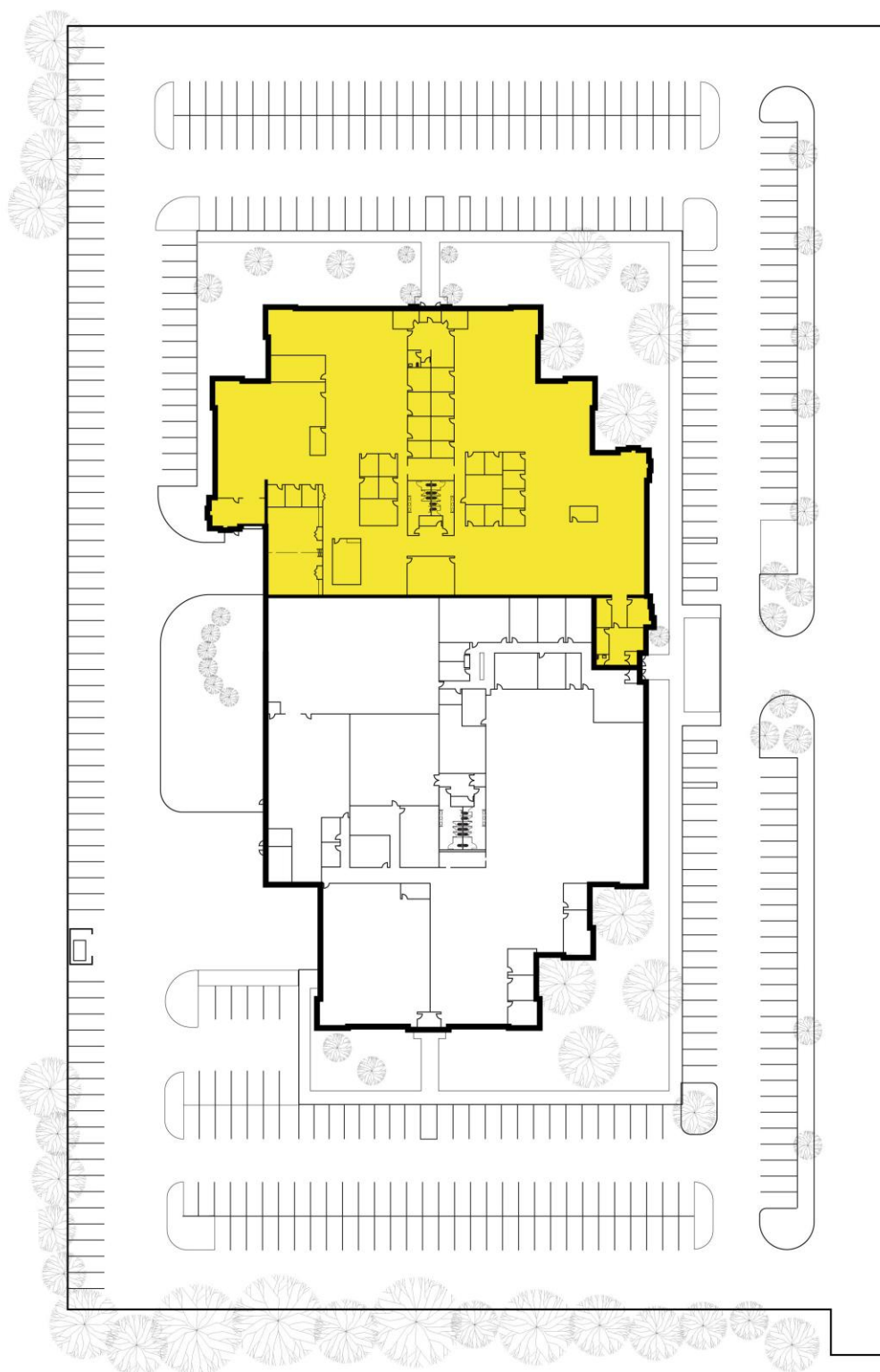
[www.signatureassociates.com](http://www.signatureassociates.com)

# 5850 Mercury Drive – Dearborn, Michigan

## Hi-Tech For Sale or Lease

For Lease –  
34,516 SF  
For Sale –  
80,670 SF

### Site Plan



For more information, please contact:

**JACK TOWNSEND**

(248) 948 0115

[jtownsend@signatureassociates.com](mailto:jtownsend@signatureassociates.com)

**CHRIS SECONTINE**

(248) 799 3174

[csecontine@signatureassociates.com](mailto:csecontine@signatureassociates.com)

**SIGNATURE ASSOCIATES**

One Towne Square, Suite 1200

Southfield, MI 48076

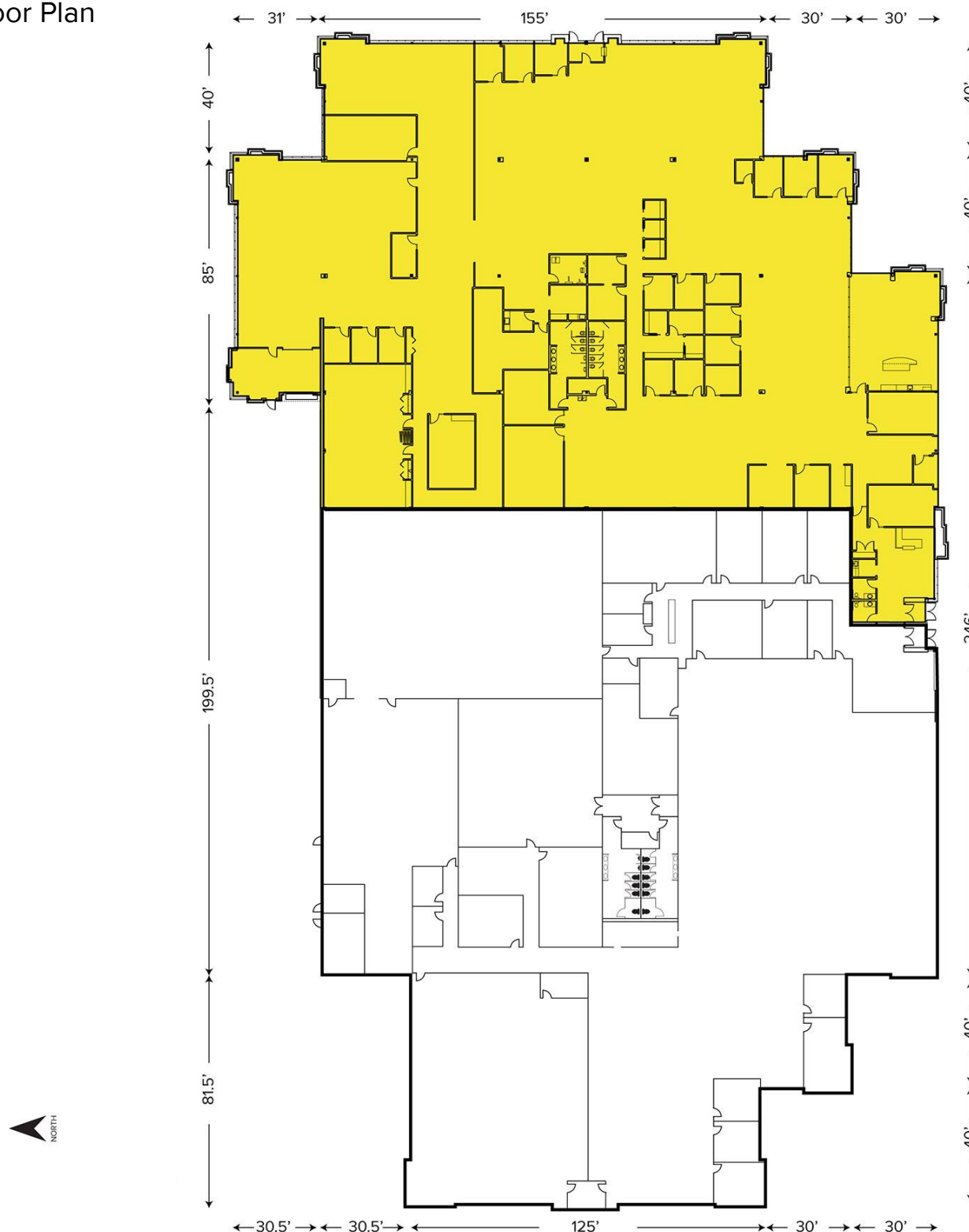
[www.signatureassociates.com](http://www.signatureassociates.com)

# 5850 Mercury Drive – Dearborn, Michigan

## Hi-Tech For Sale or Lease

For Lease –  
34,516 SF  
For Sale –  
80,670 SF

### Floor Plan



For more information, please contact:

**JACK TOWNSEND**

(248) 948 0115

[jtownsend@signatureassociates.com](mailto:jtownsend@signatureassociates.com)

**CHRIS SECONTINE**

(248) 799 3174

[csecontine@signatureassociates.com](mailto:csecontine@signatureassociates.com)

**SIGNATURE ASSOCIATES**

One Towne Square, Suite 1200

Southfield, MI 48076

[www.signatureassociates.com](http://www.signatureassociates.com)



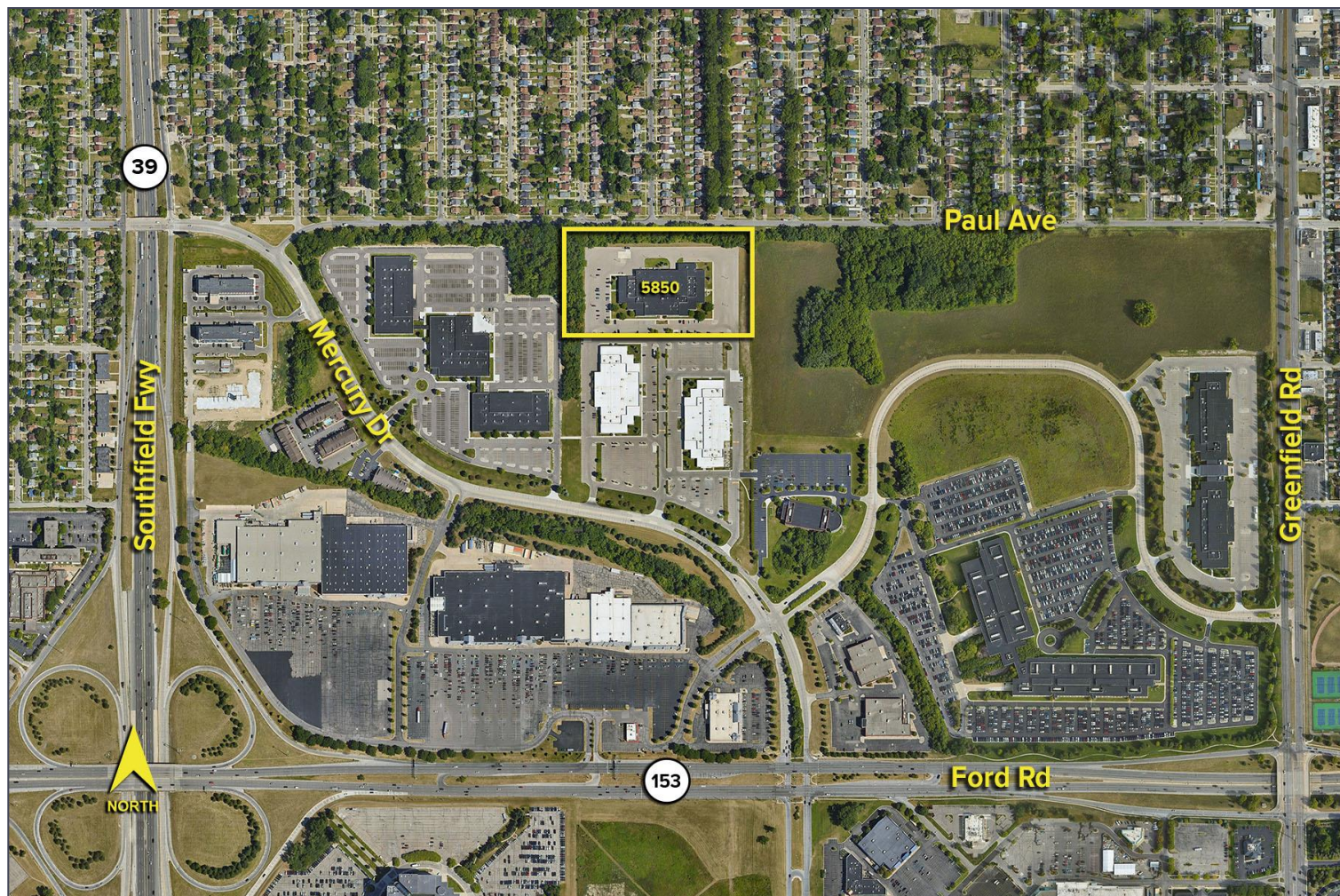
# 5850 Mercury Drive – Dearborn, Michigan

## Hi-Tech For Sale or Lease

For Lease –  
34,516 SF

For Sale –  
80,670 SF

Aerial



For more information, please contact:

**JACK TOWNSEND**

(248) 948 0115

[jtownsend@signatureassociates.com](mailto:jtownsend@signatureassociates.com)

**CHRIS SECONTINE**

(248) 799 3174

[csecontine@signatureassociates.com](mailto:csecontine@signatureassociates.com)

**SIGNATURE ASSOCIATES**

One Towne Square, Suite 1200

Southfield, MI 48076

[www.signatureassociates.com](http://www.signatureassociates.com)

Information is subject to verification and no liability for errors or omissions is assumed. Price is subject to change and listing withdrawal.