

Office | For Lease

CBRE

187 East Avenue Woodstown, NJ

2,396 SF Medical Office



2,396

SF AVAILABLE SPACE

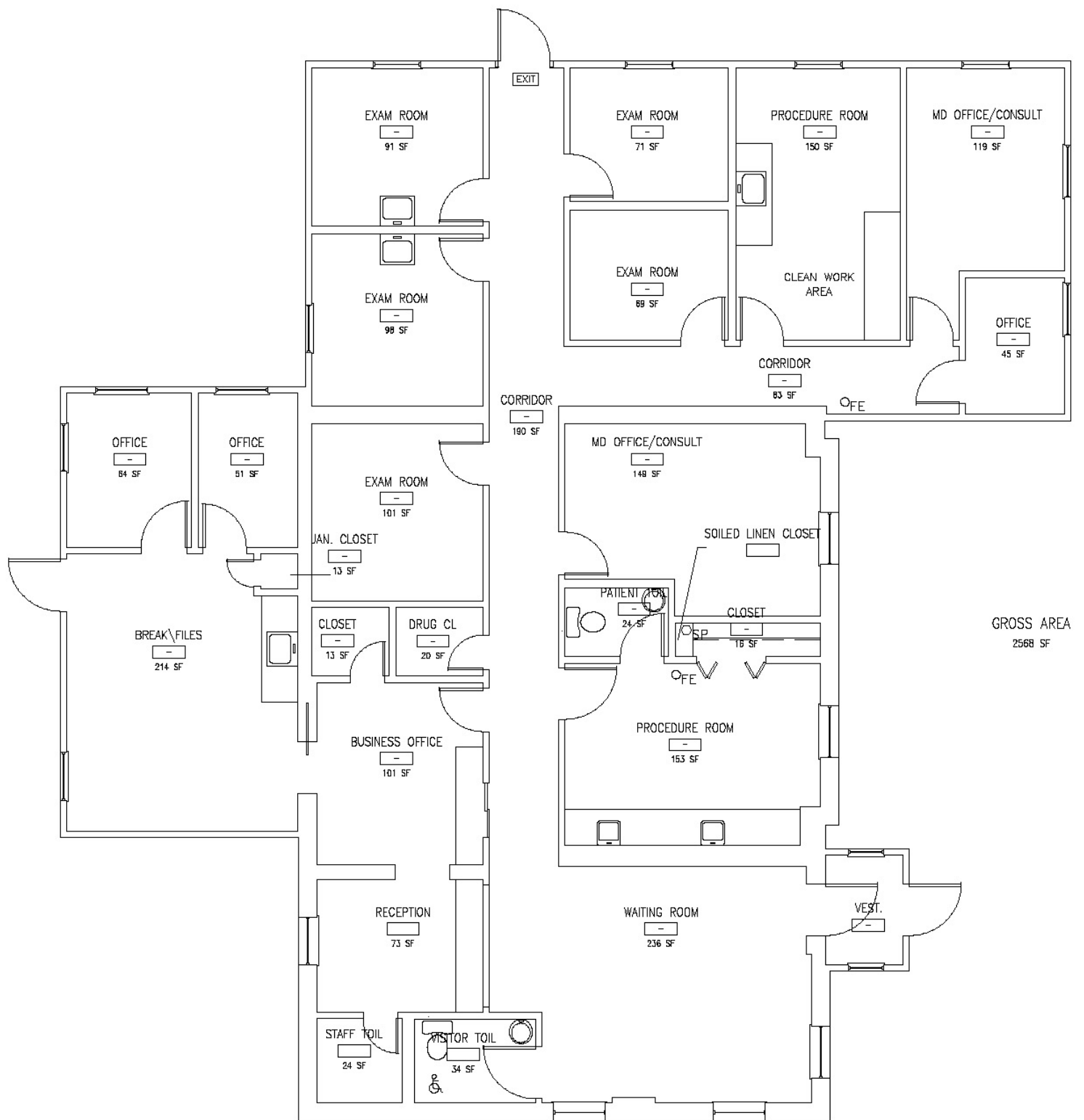
Property Highlights

Introducing 187 East Avenue, Woodstown, NJ - a 2,396 SF professional office building perfectly suited for medical or healthcare-related use. Currently fit out as a medical practice, this well-maintained property features multiple exam rooms,, private offices, a spacious reception area, and ample on-site parking. Ideally located in the heart of Woodstown, with excellent visibility and easy access for patients and staff alike, this is a rare opportunity for healthcare providers to lease a move-in ready facility in a well-established community.

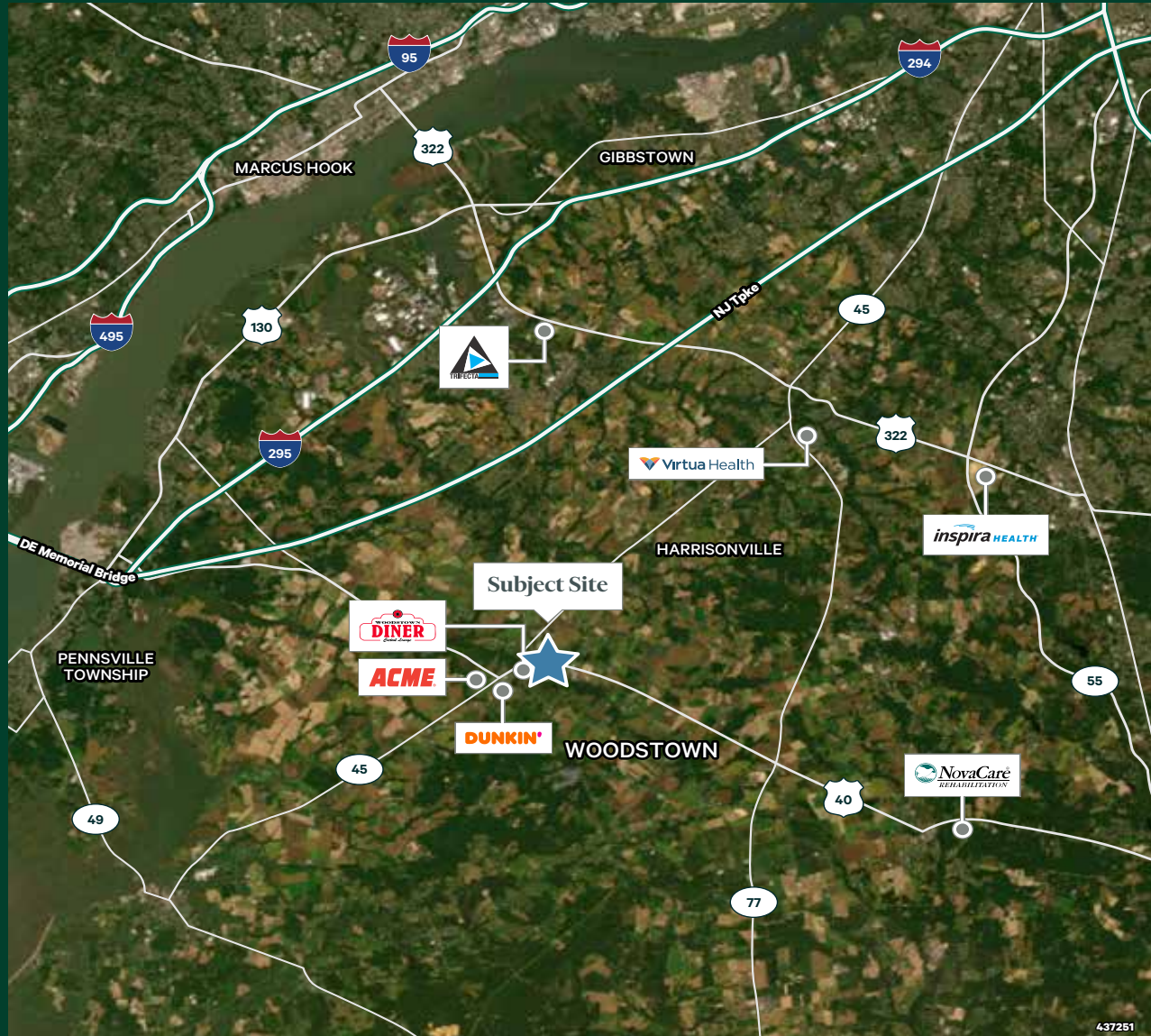
Building Features:	
Available:	2,396 SF
Asking Lease Rate:	Negotiable
Parking Ratio:	6.68 / 1,000 SF



Available: $\pm 2,396$ SF



Local Amenities



Contact Us

Brian Saggiomo

First Vice President

+1 856 359 9407

brian.saggiomo@cbre.com

Licensed Broker-Salesperson: NJ

Licensed: PA

Lisa Gibson

First Vice President

+1 856 359 9413

lisa.gibson@cbre.com

Licensed Broker-Salesperson: NJ

Licensed: PA

Jon Sarkisian

Executive Vice President

+1 856 359 9408

jon.sarkisian@cbre.com

Licensed Broker-Salesperson: NJ

Licensed: PA

CBRE, Inc.

1000 Atrium Way, Ste 101

Mt. Laurel, NJ 08054

+1 856 359 9500

www.cbre.com

Licensed Real Estate Broker

© 2025 CBRE, Inc. All rights reserved. This information has been obtained from sources believed reliable, but has not been verified for accuracy or completeness. You should conduct a careful, independent investigation of the property and verify all information. Any reliance on this information is solely at your own risk. CBRE and the CBRE logo are service marks of CBRE, Inc. All other marks displayed on this document are the property of their respective owners, and the use of such logos does not imply any affiliation with or endorsement of CBRE. Photos herein are the property of their respective owners. Use of these images without the express written consent of the owner is prohibited.