

PROSPECT CORPORATE CENTER

10929 DISK DR

10940 WHITE ROCK RD

RANCHO CORDOVA, CA

TODD ESCHELMAN

916.569.2347

todd.eschelman@nmrk.com

CA RE License #01051148

JACK BLACKMON

916.569.2372

jack.blackmon@nmrk.com

CA RE License #01999561

NEWMARK


PROJECT HIGHLIGHTS

 Prominent building signage available


 Back up Generator


 Energy star certified

 EV charging stations

 Convenient access to Highway 50 offering short commutes to both Folsom and Downtown Sacramento

 On-site showers & lockers


 Entire floor(s) can be delivered

 Close proximity to retail amenities, hotels and public transportation

 Common area putting green

 Parking ratio: 5.39/1,000 SF

 On-site bike storage

 Two-story modern office building complex



± 8,064 - ± 110,000 RSF
OFFICE SPACE AVAILABLE

PROPERTY PHOTOS

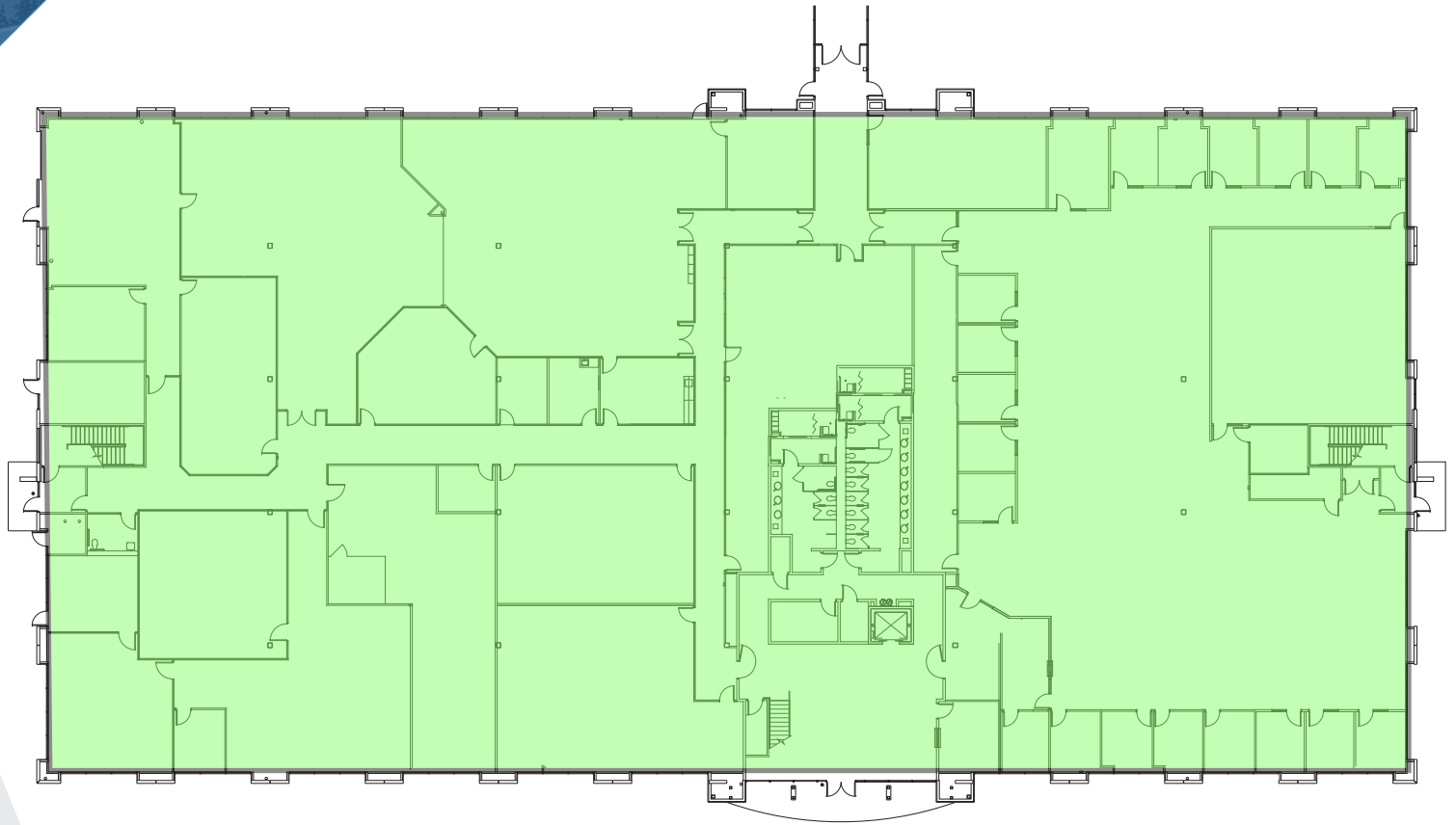


Prospect Corporate Center



10929 Disk Dr

FIRST FLOOR
±39,121 RSF



10929 Disk Dr

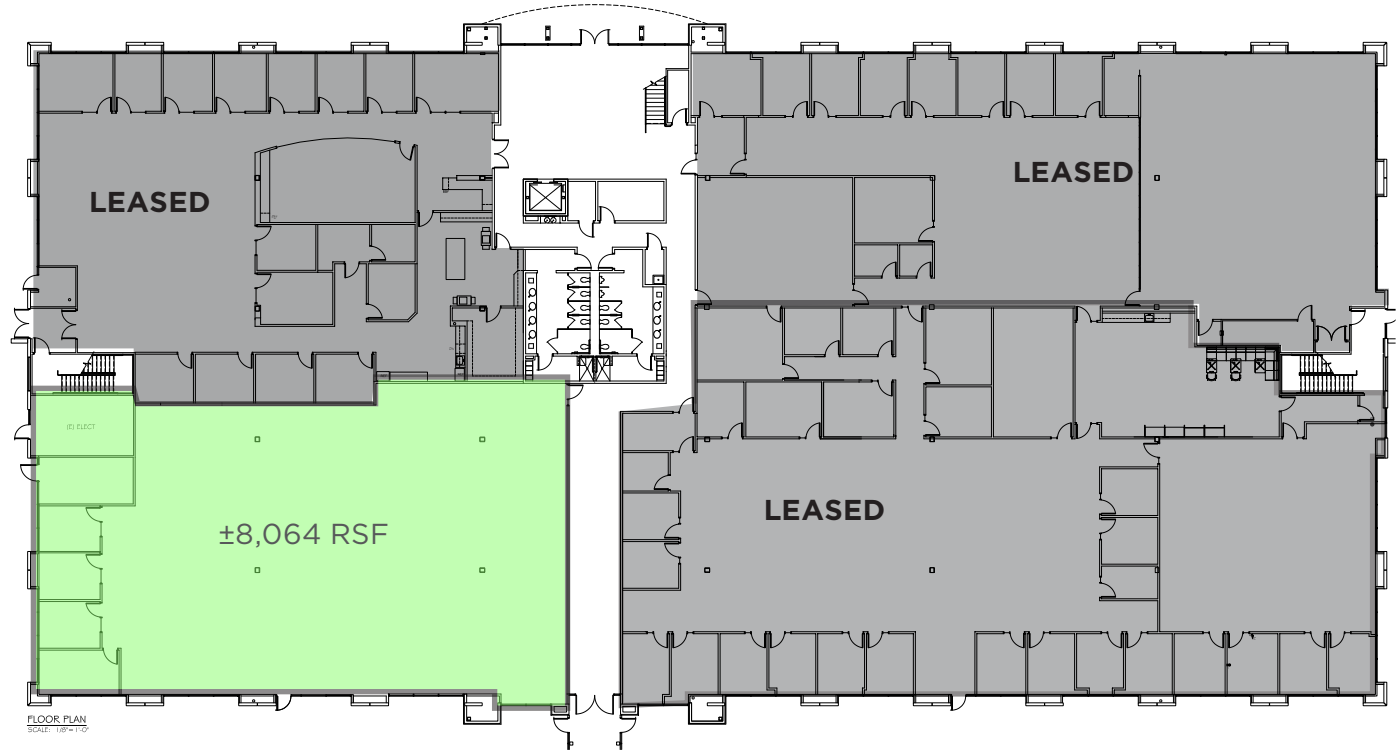
SECOND FLOOR

±39,438 RSF



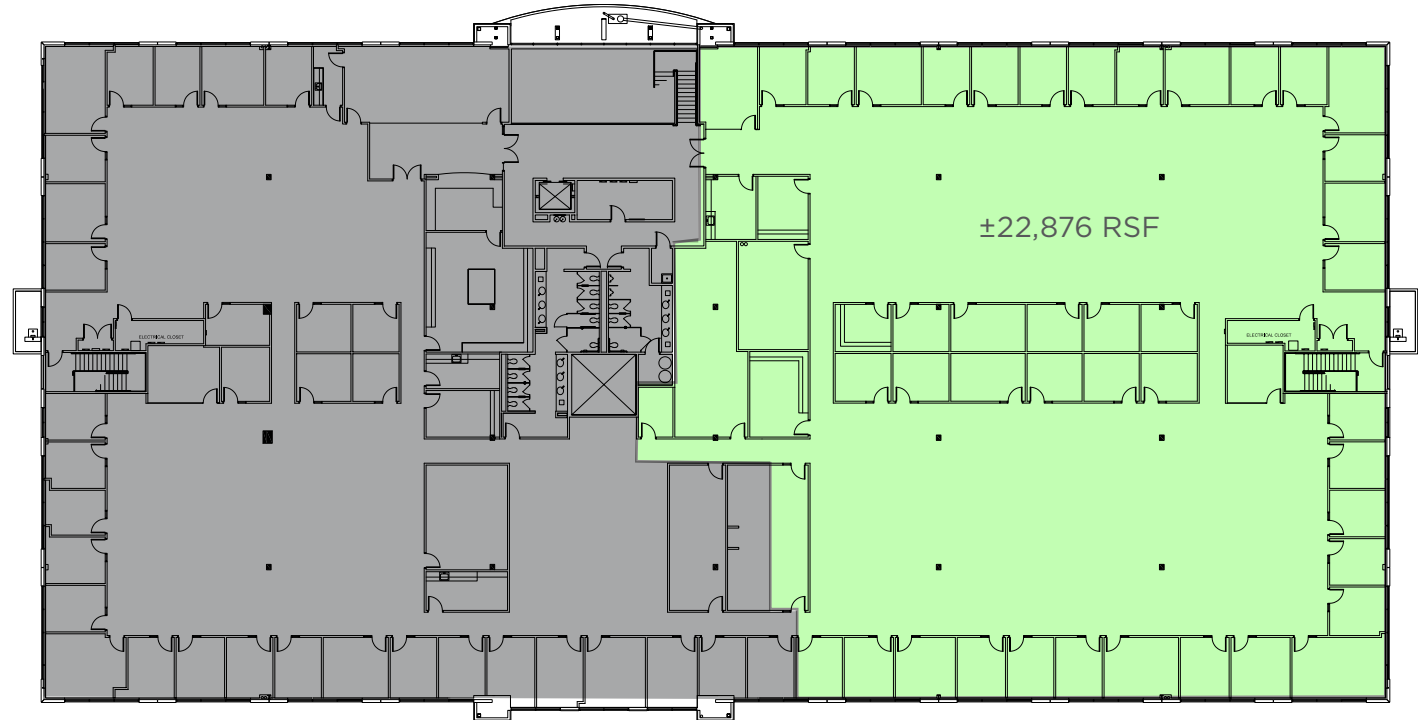
10940 White Rock Road

FIRST FLOOR
±8,064 RSF



10940 White Rock Road

SECOND FLOOR
±22,876 RSF



AMENITIES MAP



- 1 CAPITAL VILLAGE**
- Lowe's Home Improvement
 - Panera Bread
 - Chili's Grill and Bar
 - Rubio's Coastal Grill
 - The Habitat Burger Grill
 - Starbucks
 - Wingstop
 - Steve's Pizza
 - Mimosa House
 - FedEx Office Print & Ship Center
 - Beijing Cafe
 - Sira Sushi
 - Cha Thai



RENAISSANCE PARK
VILLAGE GREEN PARK



PROSPECT CORPORATE CENTER

TODD ESCHELMAN
916.569.2347
todd.eschelman@nmrk.com
CA RE License #01051148

JACK BLACKMON
916.569.2372
jack.blackmon@nmrk.com
CA RE License #01999561

The distributor of this communication is performing acts for which a real estate license is required. The information contained herein has been obtained from sources deemed reliable but has not been verified and no guarantee, warranty or representation, either express or implied, is made with respect to such information. Terms of sale or lease and availability are subject to change or withdrawal without notice. 20-1201_11/22

10929 DISK DR
10940 WHITE ROCK RD
RANCHO CORDOVA, CA

NEWMARK