

FOR LEASE



# NORTH PARK I

11635 Northpark Drive | Wake Forest, NC 27587



CAPITAL  
ASSOCIATES®



# NORTH PARK I

11635 Northpark Drive | Wake Forest, NC 27587

<b>PROPERTY TYPE</b>	Medical Office
<b>BUILDING SIZE</b>	41,887 SF
<b>LEASING RATE</b>	Contact Broker
<b>LEASE TYPE</b>	Full Service
<b>YEAR BUILT</b>	1996
<b>COUNTY</b>	Wake
<b>LOCATION</b>	Wake Forest, NC
<b>FLOORS</b>	3
<b>PARKING</b>	4.84/1000 SF

**BRET MULLER**

919.523.4200

[bmuller@capitalassociates.com](mailto:bmuller@capitalassociates.com)

**WES JOHNSON**

919.422.4853

[wjohnson@capitalassociates.com](mailto:wjohnson@capitalassociates.com)



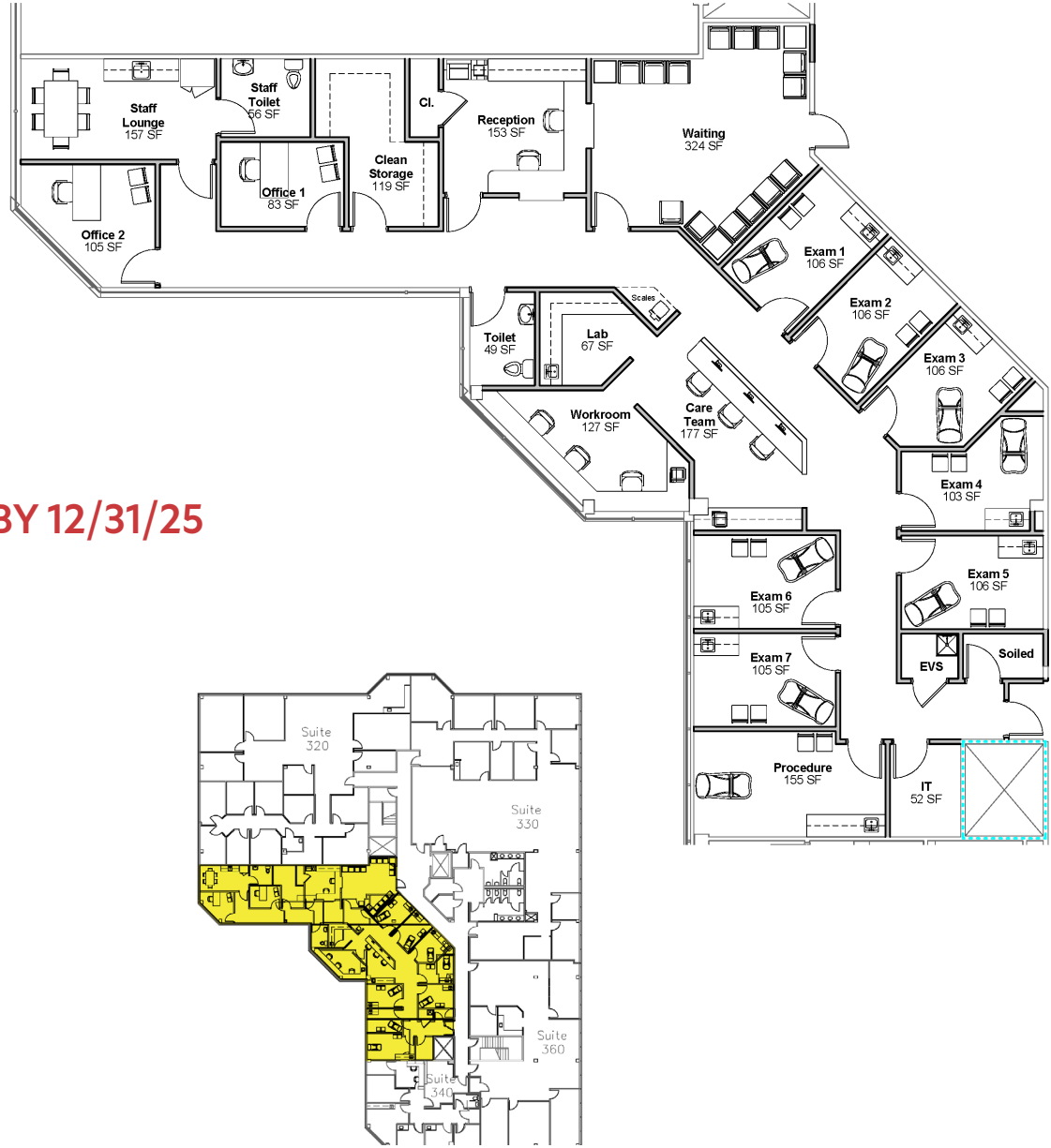
# NORTHPARK I

11635 Northpark Drive | Wake Forest, NC 27587

[CLICK HERE TO WATCH VIDEO TOUR](#)

**AVAILABLE 2025**  
Third Floor Spec Suite  
3,859 SF

**2% BROKER BONUS IF SIGNED BY 12/31/25**



**BRET MULLER**

919.523.4200

bmuller@capitalassociates.com

**WES JOHNSON**

919.422.4853

wjohnson@capitalassociates.com



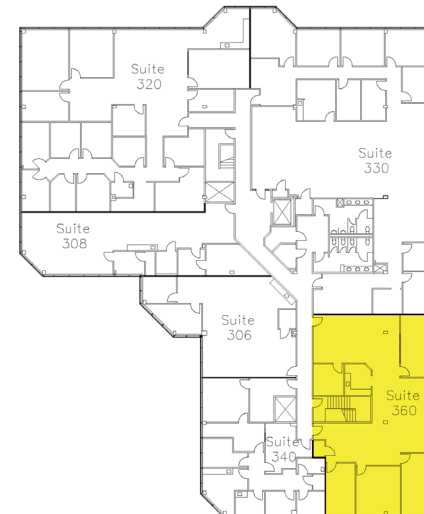
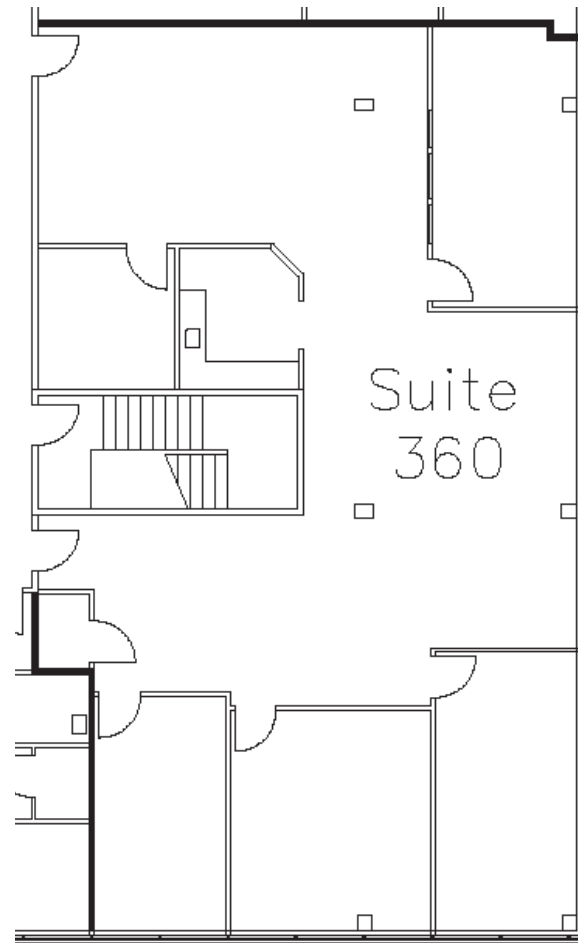
# NORTH PARK I

11635 Northpark Drive | Wake Forest, NC 27587

**AVAILABLE**

Third Floor  
Suite 360

2,822 SF



**BRET MULLER**

919.523.4200

[bmuller@capitalassociates.com](mailto:bmuller@capitalassociates.com)

**WES JOHNSON**

919.422.4853

[wjohnson@capitalassociates.com](mailto:wjohnson@capitalassociates.com)





# NORTHPARK I

11635 Northpark Drive | Wake Forest, NC 27587

## PROPERTY HIGHLIGHTS

Northpark I is a brick, window-lined 41,887 square foot three-story medical office building located in Wake Forest, NC.

- Conveniently located near the intersection of Hwy 98 Bypass and Hwy 1 (Capital Boulevard) and easily accessible from Wake Forest and surrounding areas.
- Within 2 miles of Rex Healthcare of Wakefield and many other medical providers.

### BRET MULLER

919.523.4200

[bmuller@capitalassociates.com](mailto:bmuller@capitalassociates.com)

### WES JOHNSON

919.422.4853

[wjohnson@capitalassociates.com](mailto:wjohnson@capitalassociates.com)

