



FOR LEASE

2,000 SF Warehouse With Dock High Loading (Drive In Access Potential)

2985 S Wyandot St | Englewood, CO 80110



CONTACT:

BRAD GILPIN

SENIOR VICE PRESIDENT

303.512.1196

bgilpin@uniqueprop.com

UNIQUE PROPERTIES

400 S. BROADWAY

DENVER, CO 80209

(p) 303.321.5888

(f) 303.321.5889

WWW.UNIQUEPROP.COM



2985 S WYANDOT ST

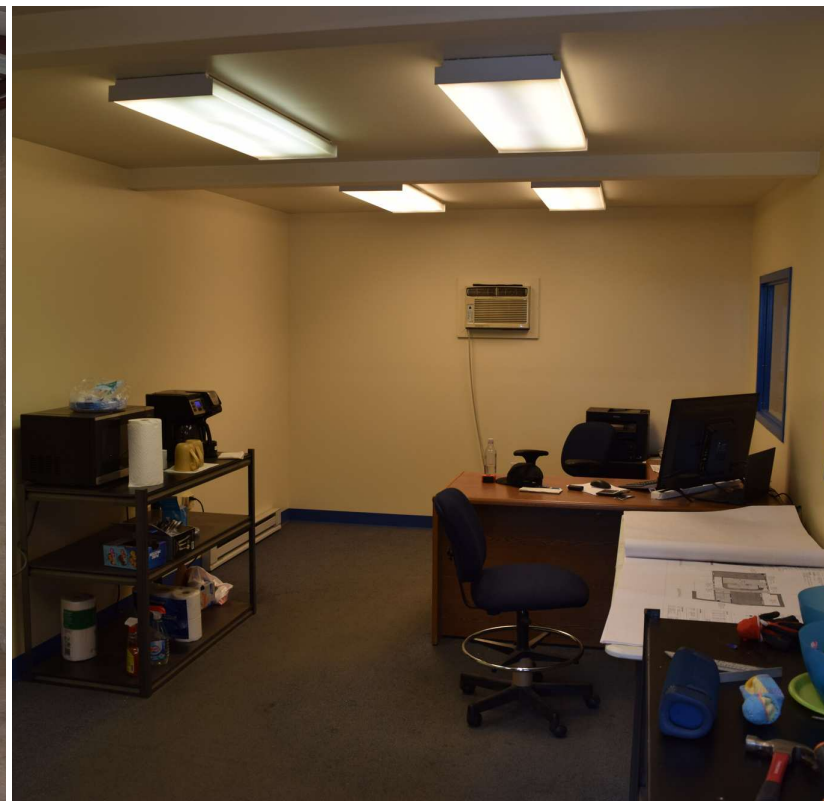
OFFERING SUMMARY

Available SF:	2,000 SF
Lease Rate:	\$18.00 SF/yr (MG)
Lot Size:	I-1 Industrial
Total Building Size:	10,611 SF
Dock High Doors:	1
Ceiling Height:	14.0 FT
Year Built:	1974
Zoning:	Arapahoe

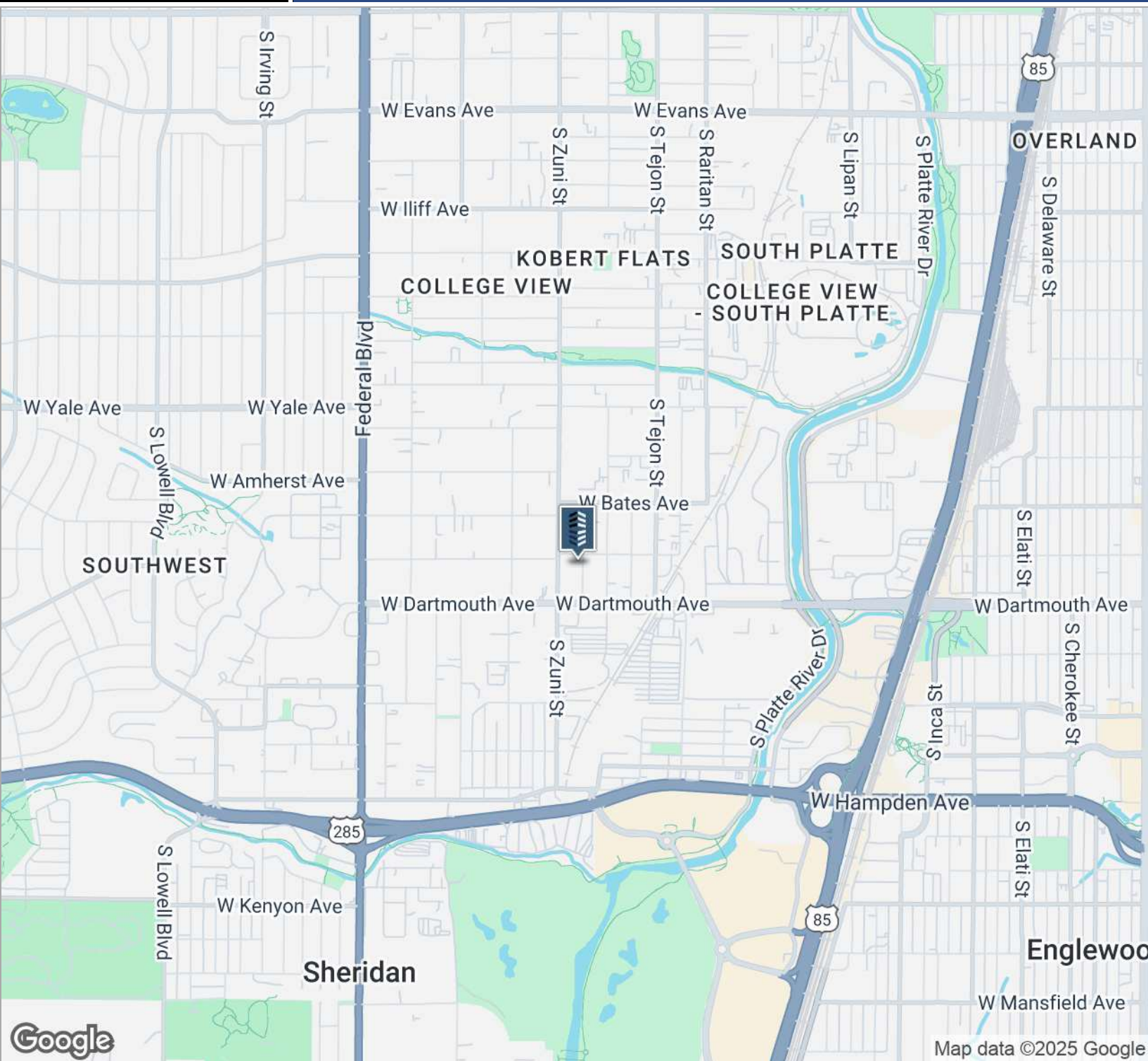
PROPERTY HIGHLIGHTS

- Located just North of W. Dartmouth Ave on S. Wyandot Street in Englewood.
- 2,000 SF warehouse with dock high loading (drive in access potential)
- Small open office area with a private restroom
- Heavy power
- Additional warehouse area potentially available*
- Lease for just \$3,000/mth plus utilities.

2,000 SF WAREHOUSE WITH DOCK HIGH LOADING (DRIVE IN ACCESS)



2,000 SF WAREHOUSE WITH DOCK HIGH LOADING (DRIVE IN ACCESS)



CONTACT:

BRAD GILPIN

SENIOR VICE PRESIDENT

303.512.1196

bgilpin@uniqueprop.com

The information contained herein was obtained from sources believed reliable; however, Unique Properties makes no guarantees, warranties or representations as to the completeness or accuracy thereof. The presentation on this property is submitted subject to errors, omission, changes of price, or conditions, prior to sale or lease, or withdrawal without notice.